

LEGEND

- FZ - Farming Zone
- NRZ - Neighbourhood Residential Zone
- PCRZ - Public Conservation and Resource Zone
- RLZ - Rural Living Zone

Municipal Boundary

Disclaimer
This publication may be of assistance to you but the State of Victoria and its employees do not guarantee that the publication is without flaw of any kind or is wholly appropriate for your particular purposes and therefore disclaims all liability for any error, loss or other consequence which may arise from you relying on any information in this publication.

© The State of Victoria Department of Environment, Land, Water and Planning 2018

0 610 1,220
Meters

NORTH

Planning Group
Printed: 12/06/2019
Amendment Version: 5

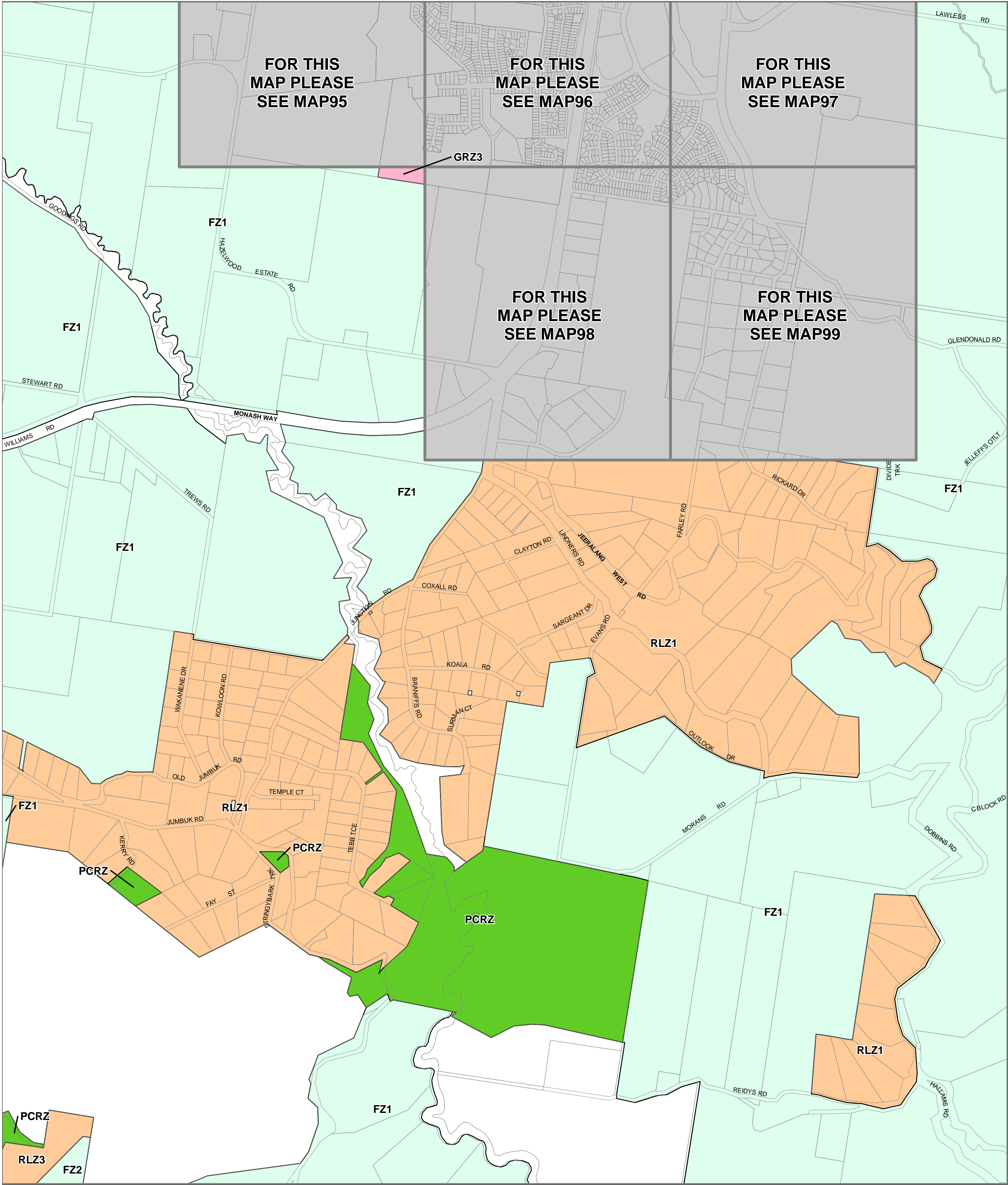
Australian Map Grid Zone 55

VICTORIA State Government

Environment, Land, Water and Planning

INDEX TO ADJOINING SCHEME MAPS

LATROBE PLANNING SCHEME - LOCAL PROVISION
AMENDMENT C105latr



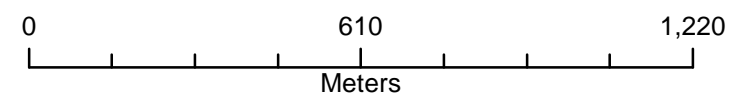
LEGEND

- FZ - Farming Zone
 GRZ - General Residential Zone
 NRZ - Neighbourhood Residential Zone
 PCRZ - Public Conservation and Resource Zone
 RLZ - Rural Living Zone



Disclaimer
This publication may be of assistance to you but the State of Victoria and its employees do not guarantee that the publication is without flaw of any kind or is wholly appropriate for your particular purposes and therefore disclaims all liability for any error, loss or other consequence which may arise from you relying on any information in this publication.

© The State of Victoria Department of
Environment, Land, Water and Planning 2018



Australian Map Grid Zone 55

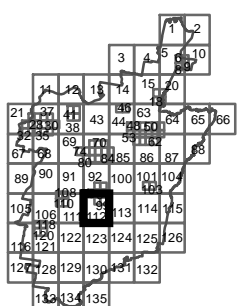


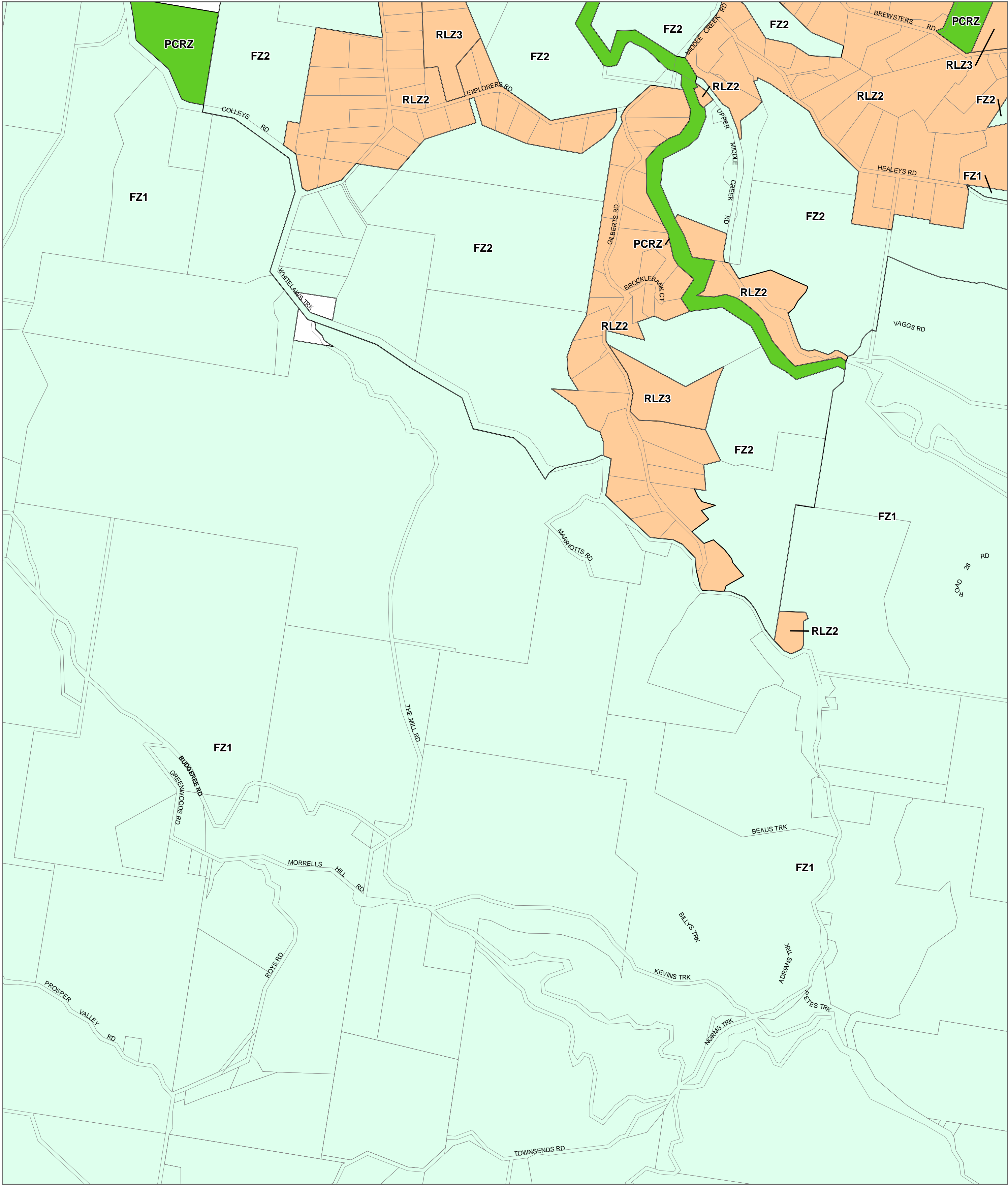
Planning Group
Printed: 12/06/2019
Amendment Version: 5



Environment,
Land, Water
and Planning

INDEX TO ADJOINING SCHEME MAPS





LEGEND

- FZ - Farming Zone
- PCRZ - Public Conservation and Resource Zone
- RLZ - Rural Living Zone

Municipal Boundary

Disclaimer
This publication may be of assistance to you but the State of Victoria and its employees do not guarantee that the publication is without flaw of any kind or is wholly appropriate for your particular purposes and therefore disclaims all liability for any error, loss or other consequence which may arise from you relying on any information in this publication.

© The State of Victoria Department of Environment, Land, Water and Planning 2018

0 610 1,220
Meters

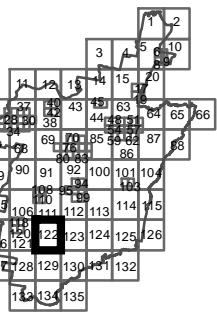


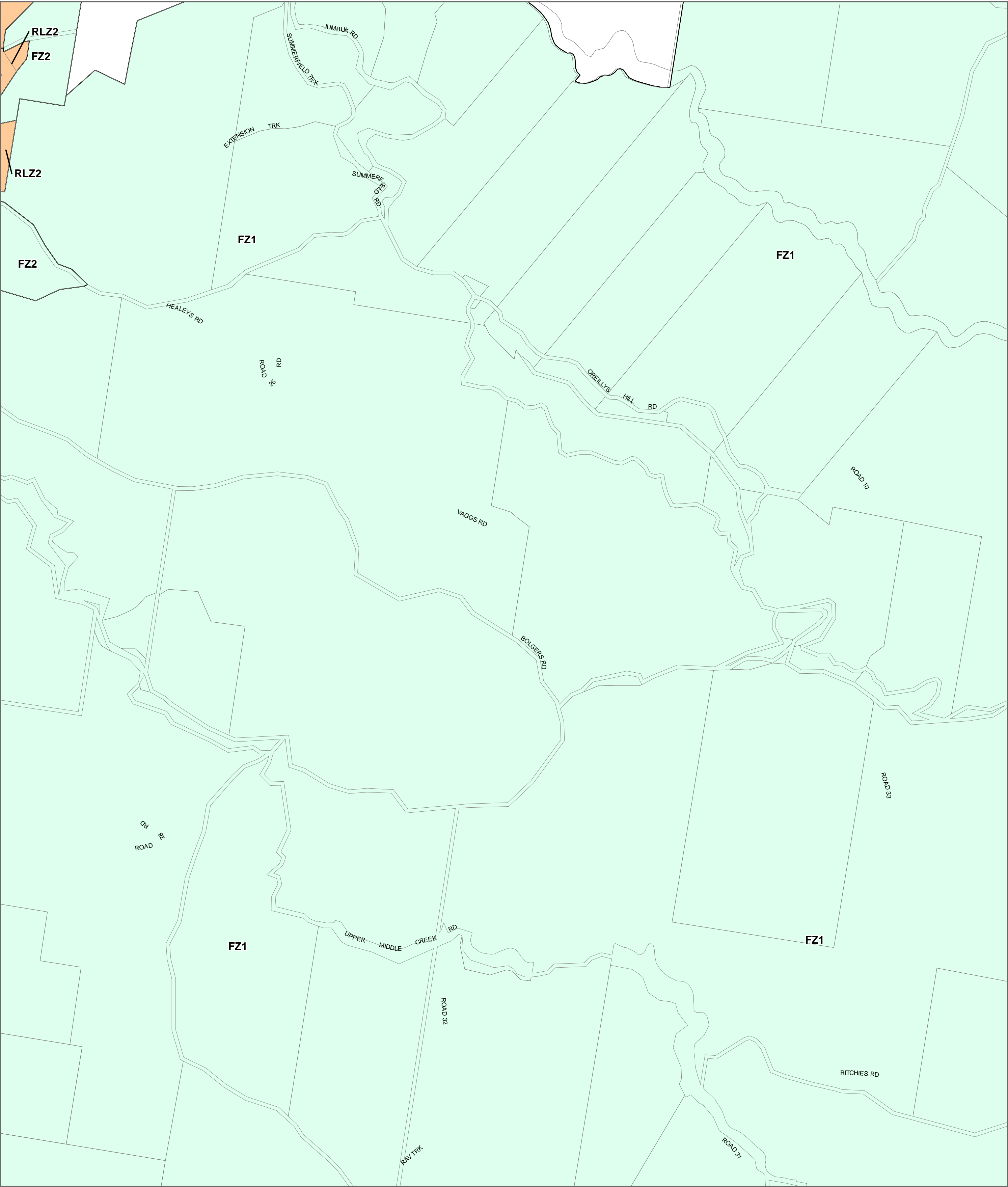
Planning Group
Printed: 11/06/2019
Amendment Version: 5



Environment,
Land, Water
and Planning

INDEX TO ADJOINING SCHEME MAPS





LEGEND

- FZ - Farming Zone
- RLZ - Rural Living Zone
- Municipal Boundary

Disclaimer

This publication may be of assistance to you but the State of Victoria and its employees do not guarantee that the publication is without flaw of any kind or is wholly appropriate for your particular purposes and therefore disclaims all liability for any error, loss or other consequence which may arise from you relying on any information in this publication.

© The State of Victoria Department of Environment, Land, Water and Planning 2018

0 610 1,220

Meters

NORTH

Planning Group
Printed: 11/06/2019
Amendment Version: 5

Australian Map Grid Zone 55

VICTORIA
State Government

Environment,
Land, Water
and Planning

INDEX TO ADJOINING SCHEME MAPS