

Economic and Population Indicators ²⁰¹⁹



Contents

VOLUME 1 - Population	4
Fast Facts.....	4
Population Size and Growth	5
Age Structure	6
Income Levels	9
Households.....	12
VOLUME 2 - Housing and Land	14
Fast Facts.....	14
Housing Prices	14
Rental Prices	15
Housing Affordability	17
Residential Sales Volume	18
Construction Activity	18
Current Land Supply	18
VOLUME 3- Business, Industry and Investment	20
Fast Facts.....	20
Key Industries	20
Business Environment	23
Visitor Economy	29
Major and Community Events.....	30
VOLUME 4- Workforce and Skill	31
Fast Facts.....	31
Unemployment	31
Labour Force Participation	32
Skills, Education and Training	33
Commuting and Transport	36
References	37

To obtain this information in languages other than English, or in other formats (including audio, electric, Braille or large print), please contact Latrobe City Council on 1300 367 700.

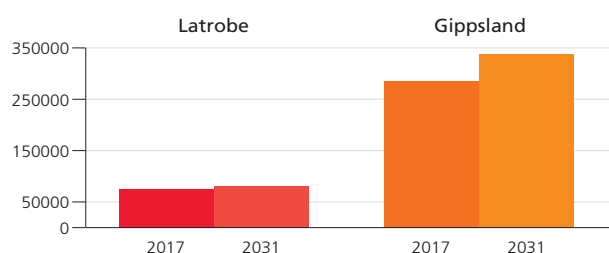


VOLUME 1

Population

This segment provides an overview of population and demographic data for residents living in Latrobe City and Gippsland. Latrobe City's population is expected to continually grow over the next two decades with a 0.69% projected annual change from 2016 through to 2031.

Projected Population Latrobe City and Gippsland



0.69%
LATROBE
ANNUAL
POPULATION
GROWTH
2016-2031

1.33%
GIPPSLAND
ANNUAL
POPULATION
GROWTH
2016-2031

FAST FACTS



POPULATION (2017)
74,612

LARGEST INDUSTRY
BY EMPLOYMENT (2017)
Health Care and Social Assistance

+ 5,385



4,289
BUSINESSES (2017)



\$223,000
MEDIAN HOUSE
PRICE (2017)

9.5%

UNEMPLOYMENT
(JUNE 2018)

44.3 YRS

MEDIAN AGE
(2016)

32,389

LABOUR FORCE
(2017)



\$544
WEEKLY

MEDIAN PERSONAL
INCOME (2016)



1%
SHARE OF STATE
ECONOMY (2017)

GRP (2017)
\$4.87
BILLION

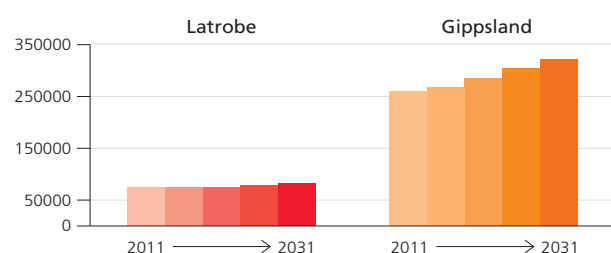


\$1,355
AVERAGE
MONTHLY
MORTGAGE
PAYMENT
(2016)

Population Size and Growth

- Latrobe City is one of four Regional Cities in Victoria, the population is forecast to grow by 0.69% annually
- In 2013 Latrobe City's population was 73,846 and grew by 766 by 2017 to 74,612
- Based on the 2016 report 'Victoria in Future' Latrobe City's population is forecast to grow annually by 505 to 2031

Historic and Projected Population Growth in Latrobe and Gippsland

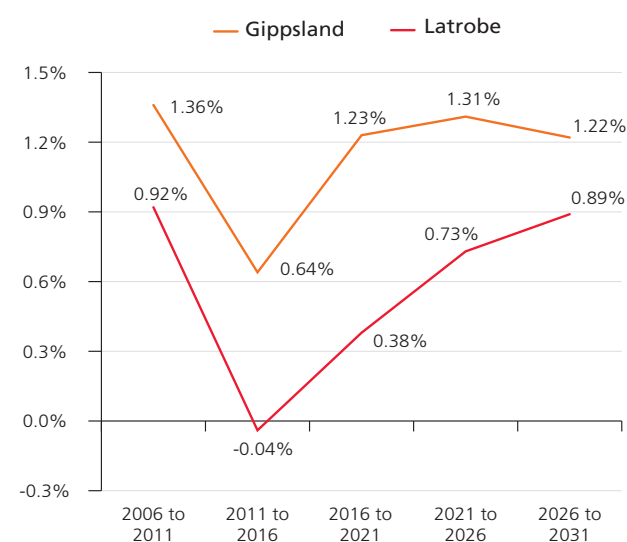


Latrobe City's Population by Suburb (2017)

TOWN	POPULATION
Traralgon (includes Traralgon East and Traralgon South)	27,226
Morwell	13,774
Moe (includes Moe South)	9,320
Newborough	6,760
Churchill	4,784
Hazelwood	1,478
Yinnar (includes Yinnar South)	1,589
Yallourn North	1,543
Glengarry (includes Glengarry North and Glengarry West)	1,399
Boolarra (includes Boolarra South)	1,109
Toongabbie	992
Tyers	825



Historic and Projected Annual Population Growth Rates



Source: Victoria in Future, 2016

Historic and Projected Population Growth in Victoria's Regional Cities and Gippsland

YEAR	LATROBE	GEELONG	BENDIGO	BALLARAT	GIPPSLAND
2006	70,536	205,686	96,543	88,451	243,299
2011	73,788	215,837	101,995	95,185	259,816
2016	73,646	233,349	110,446	103,249	268,138
2021	75,038	253,247	121,687	113,800	284,629
2026	77,775	274,085	133,058	125,235	303,202
2031	81,222	296,360	144,632	136,873	321,743

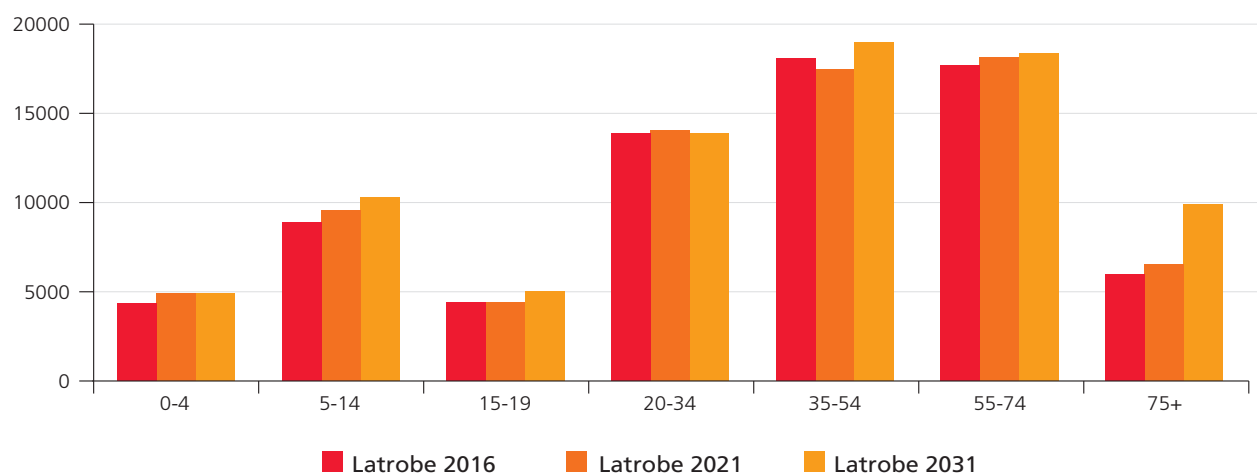
Source: *Victoria in Future, 2016*

Age Structure

- In 2016, Latrobe City had the highest median age of 44.3 years compared with the other three regional cities of Victoria
- Out of the 73,257 people in Latrobe City (2016) 12.2% or 8,913 persons were aged between 40 to 49 years
- The age bracket that contained the most people was 50 to 59 years with 14.03% or 10,277

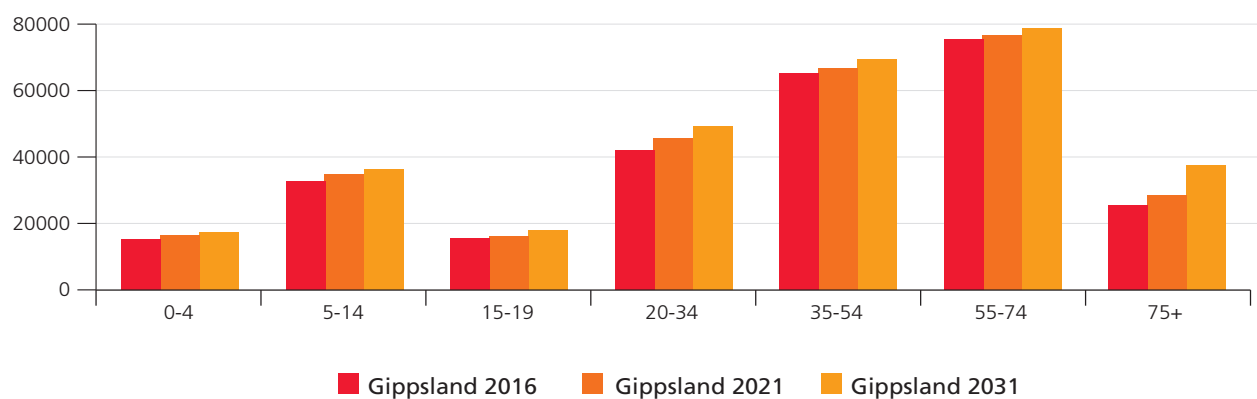


Past and Future Latrobe City Predicted Population by Age Group



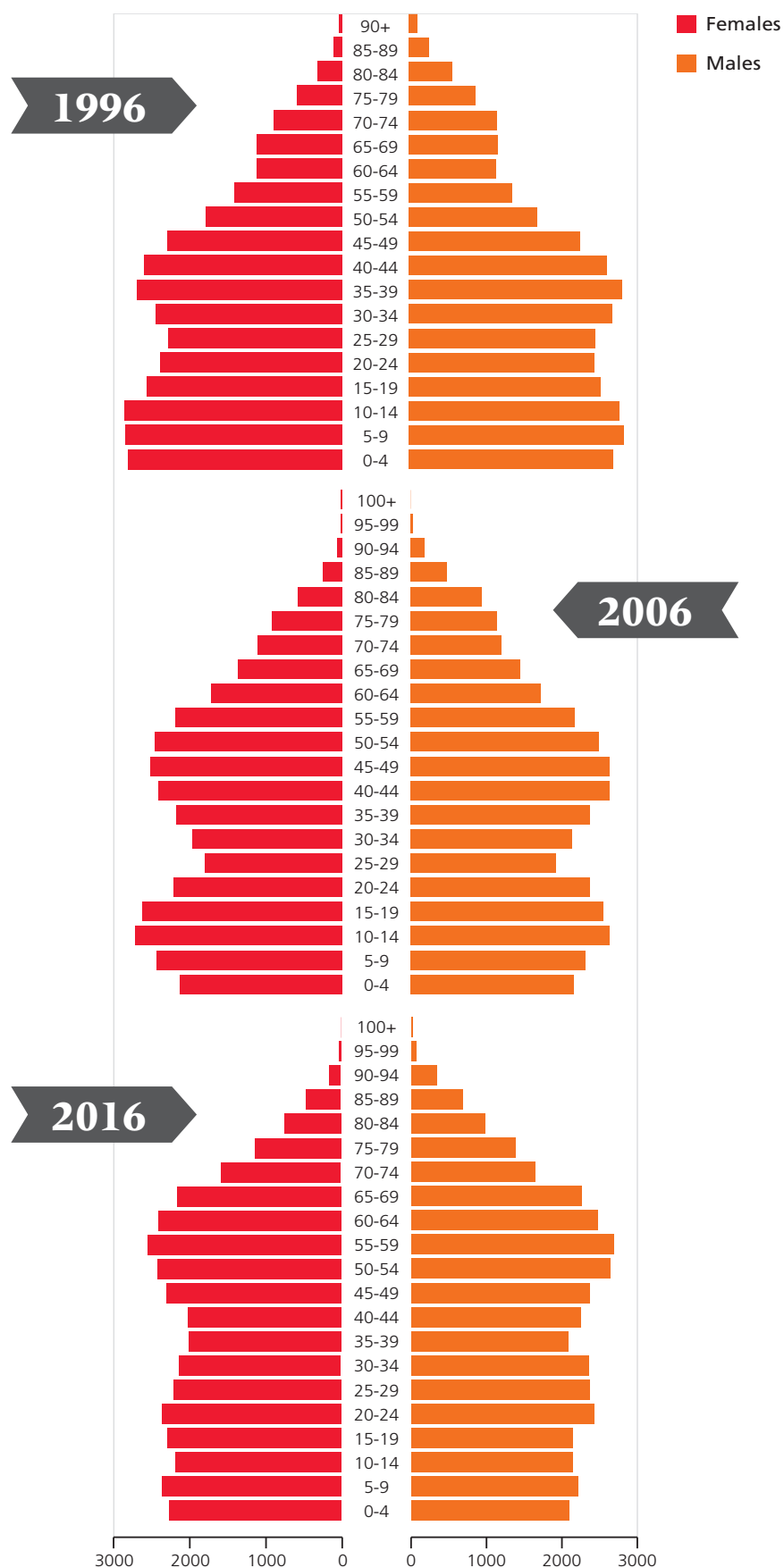
Source: Remplan, 2016; Victoria in Future, 2016

Past and Future Gippsland Predicted Population by Age Group

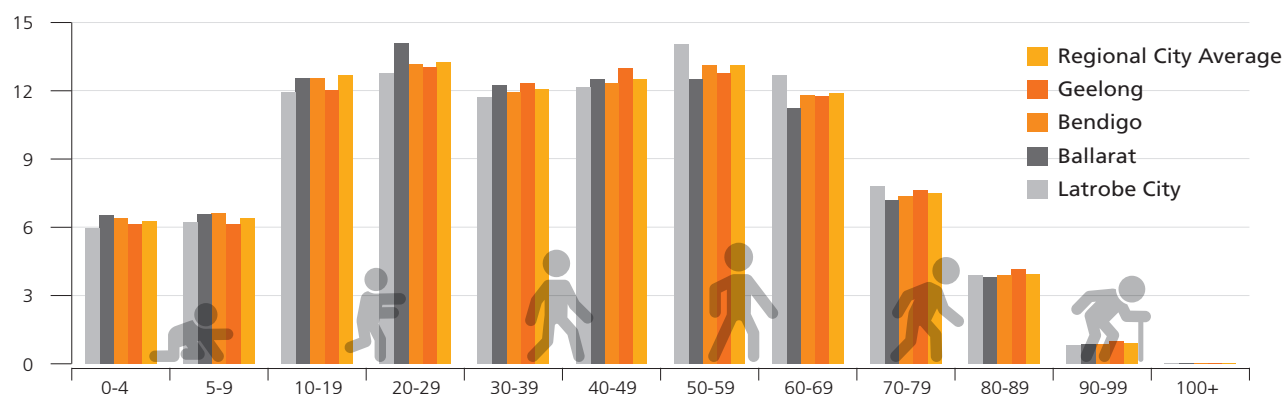


Source: Remplan, 2016; Victoria in Future, 2016

Historic Age Break Down by Gender (1991 to 2016)



Share of Population by Age Group (2016)



Source: Remplan, 2016

Income Levels

- In 2016, 34.2% of the Latrobe City workforce earned between \$1 and \$400 per week compared to 17.5% earning between \$1,000 and \$1,999
- There were 7.3% of people over the age of 15 in 2016 who reported earning nil income in Latrobe City
- In 2017, 10,052 reported that they received the age pension as either a one off, or their sole means of income
- 7,424 Pension Concession Rebates were applied to private rateable properties throughout Latrobe City during the 17/18 financial year

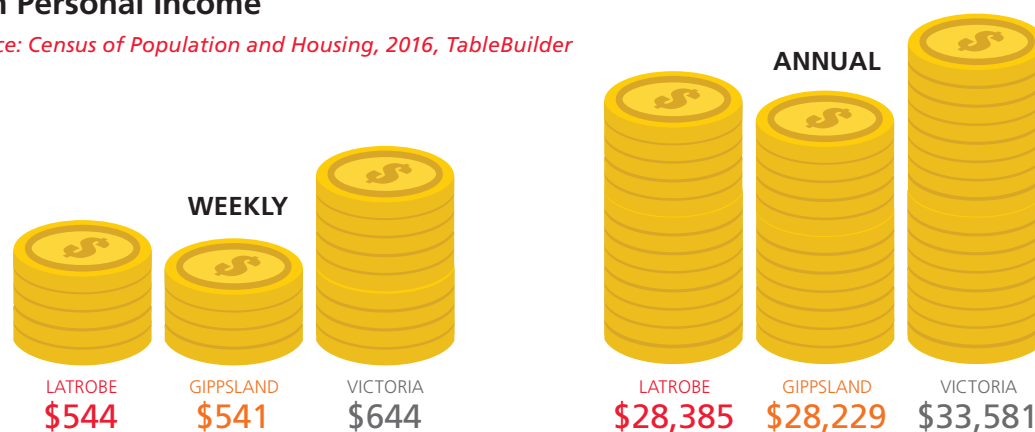


Estimates of Weekly Personal Income Levels (2016)

LGA (UR)	LATROBE	GIPPSLAND	VICTORIA
Negative income	267	1,202	27,121
Nil income	4,365	15,078	467,929
\$1 to \$149 (\$1 to \$7,799)	2,639	9,609	218,512
\$150 to \$299 (\$7,800 to \$15,599)	5,138	18,476	349,962
\$300 to \$399 (\$15,600 to \$20,799)	6,535	25,279	406,878
\$400 to \$499 (\$20,800 to \$25,999)	6,227	24,191	391,306
\$500 to \$649 (\$26,000 to \$33,799)	5,167	20,416	360,834
\$650 to \$799 (\$33,800 to \$41,599)	4,535	18,256	366,105
\$800 to \$999 (\$41,600 to \$51,999)	4,446	17,456	404,215
\$1,000 to \$1,249 (\$52,000 to \$64,999)	4,025	15,842	407,043
\$1,250 to \$1,499 (\$65,000 to \$77,999)	2,652	9,743	278,096
\$1,500 to \$1,749 (\$78,000 to \$90,999)	2,170	7,552	226,824
\$1,750 to \$1,999 (\$91,000 to \$103,999)	1,635	5,150	153,097
\$2,000 to \$2,999 (\$104,000 to \$155,999)	2,372	6,646	220,800
\$3,000 or more (\$156,000 or more)	1,206	3,866	143,874
Not stated	6,613	24,709	423,109
Not applicable	13,258	47,796	1,080,919
TOTAL	73,257	271,267	5,926,624

Median Personal Income

Data Source: Census of Population and Housing, 2016, TableBuilder

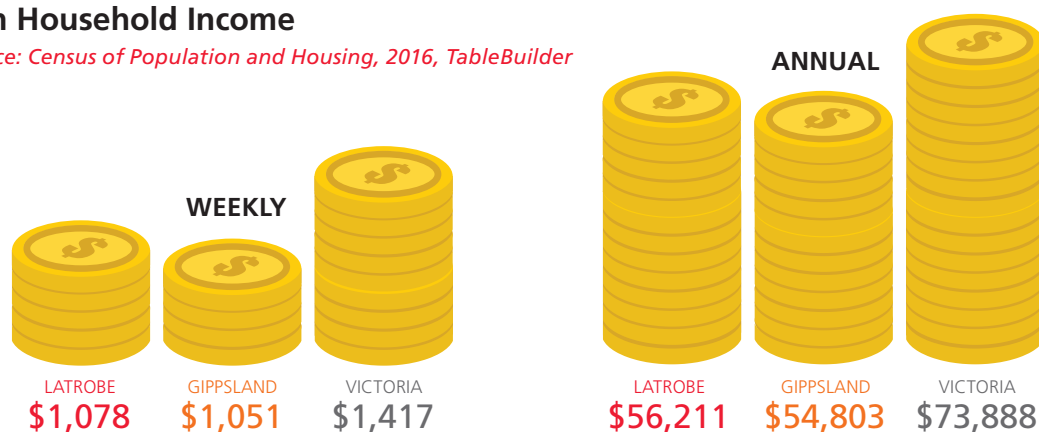


Estimates of Weekly Household Income Levels (2016)

LGA	LATROBE	GIPPSLAND	VICTORIA
Negative income	65	319	6,036
Nil income	343	1,181	37,227
\$1 to \$149 (\$1 to \$7,799)	258	1,040	17,990
\$150 to \$299 (\$7,800 to \$15,599)	909	2,961	44,893
\$300 to \$399 (\$15,600 to \$20,799)	1,283	4,236	58,679
\$400 to \$499 (\$20,800 to \$25,999)	2,684	10,142	133,800
\$500 to \$649 (\$26,000 to \$33,799)	1,715	6,211	91,830
\$650 to \$799 (\$33,800 to \$41,599)	2,630	10,322	146,983
\$800 to \$999 (\$41,600 to \$51,999)	2,133	8,571	142,558
\$1,000 to \$1,249 (\$52,000 to \$64,999)	2,320	9,546	173,729
\$1,250 to \$1,499 (\$65,000 to \$77,999)	1,974	7,884	157,392
\$1,500 to \$1,749 (\$78,000 to \$90,999)	1,500	5,688	129,055
\$1,750 to \$1,999 (\$91,000 to \$103,999)	1,451	5,353	121,471
\$2,000 to \$2,499 (\$104,000 to \$129,999)	2,429	8,324	223,841
\$2,500 to \$2,999 (\$130,000 to \$155,999)	1,351	4,528	136,112
\$3,000 to \$3,499 (\$156,000 to \$181,999)	823	2,460	84,845
\$3,500 to \$3,999 (\$182,000 to \$207,999)	683	2,087	75,418
\$4,000 to \$4,499 (\$208,000 to \$233,999)	335	962	37,575
\$4,500 to \$4,999 (\$234,000 to \$259,999)	287	888	35,055
\$5,000 to \$5,999 (\$260,000 to \$311,999)	189	581	32,572
\$6,000 to \$7,999 (\$312,000 to \$415,999)	108	447	27,432
\$8,000 or more (\$416,000 or more)	25	92	3,607
Partial income stated	1,938	7,395	158,771
All incomes not stated	1,044	3,980	60,567
TOTAL	28,477	105,198	2,137,438

Median Household Income

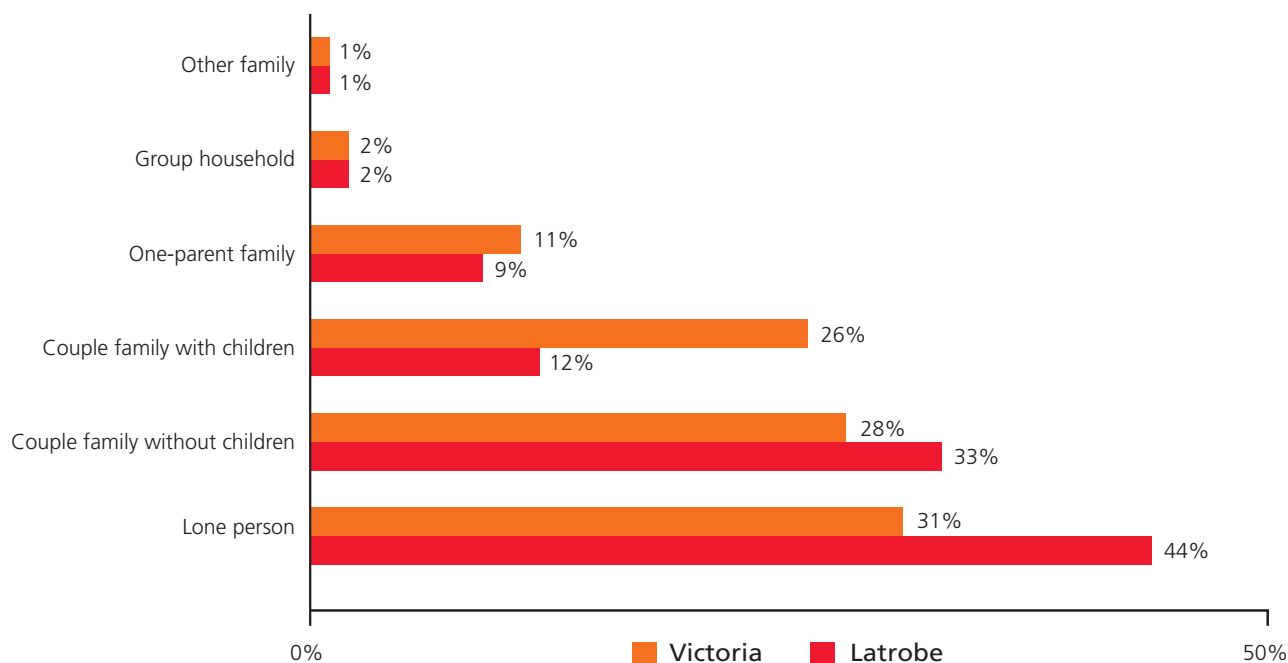
Data Source: Census of Population and Housing, 2016, TableBuilder



Households

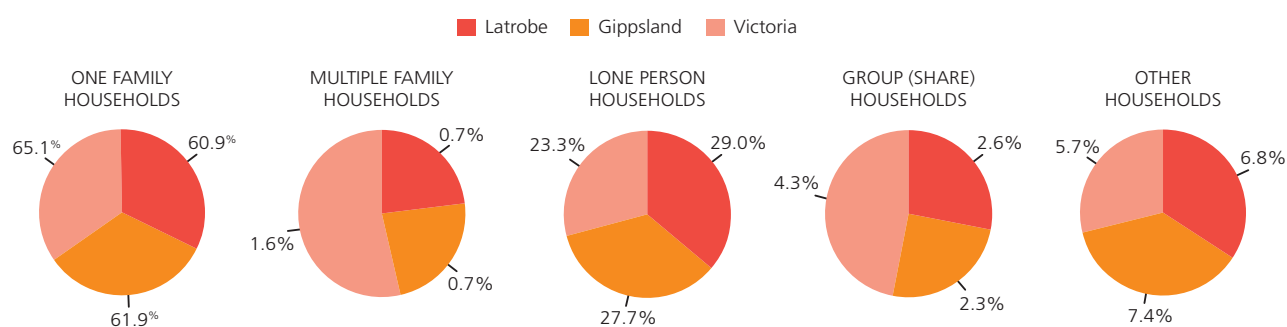
- At the time of the 2016 census, 27,004 people stated they owned a house with a mortgage
- The average household consisted of 2.3 people (2016)
- The most common monthly mortgage repayment is \$1,000 to \$1,199 (2016)

Figure 1.14: Composition of Household Growth - Selected Locations, 2016 to 2031



Source: *Victoria in Future 2015*, Department of Environment, Land, Water and Planning (DELWP)

Comparative Household Structure (2016)

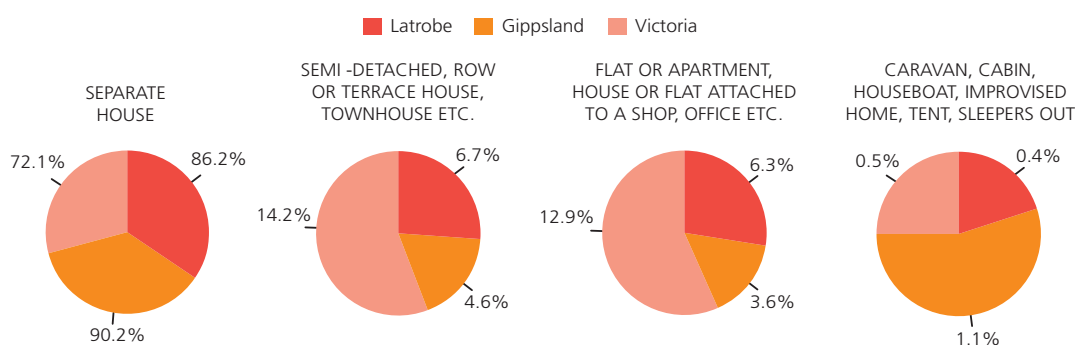


Data Source: *Census of Population and Housing, 2016*, TableBuilder



Comparative Dwelling Structure (2016)

	LATROBE	GIPPSLAND	VICTORIA
Separate house	29,390	128,869	1,816,919
Semi-detached, row or terrace house, townhouse etc. with one storey	2,142	5,604	228,073
Semi-detached, row or terrace house, townhouse etc. with two or more storeys	159	978	129,887
Flat or apartment in a one or two storey block	2,105	4,711	130,181
Flat or apartment in a three storey block	0	109	64,031
Flat or apartment in a four or more storey block	0	24	122,822
Flat or apartment attached to a house	5	17	524
Caravan	41	728	4,408
Cabin, houseboat	77	640	5,326
Improvised home, tent, sleepers out	16	236	2,202
House or flat attached to a shop, office, etc.	27	260	7,533
Not stated	147	719	9,002
TOTAL	34,109	142,895	2,520,908



Source: Census of Population and Housing, 2016, TableBuilder



VOLUME 2

Housing and Land

Compared to Victoria's other three Regional Cities, Latrobe City's residential house value is more affordable with a median house price of \$223,000 and the median rent value approximately \$240 per week. In 2016 the median house price in Latrobe City was \$210,000 compared to 2017 where it was listed at \$223,000, an approximate increase of 6%.



Housing Prices

FAST FACTS

\$223,000
MEDIAN HOUSE PRICE (2017)

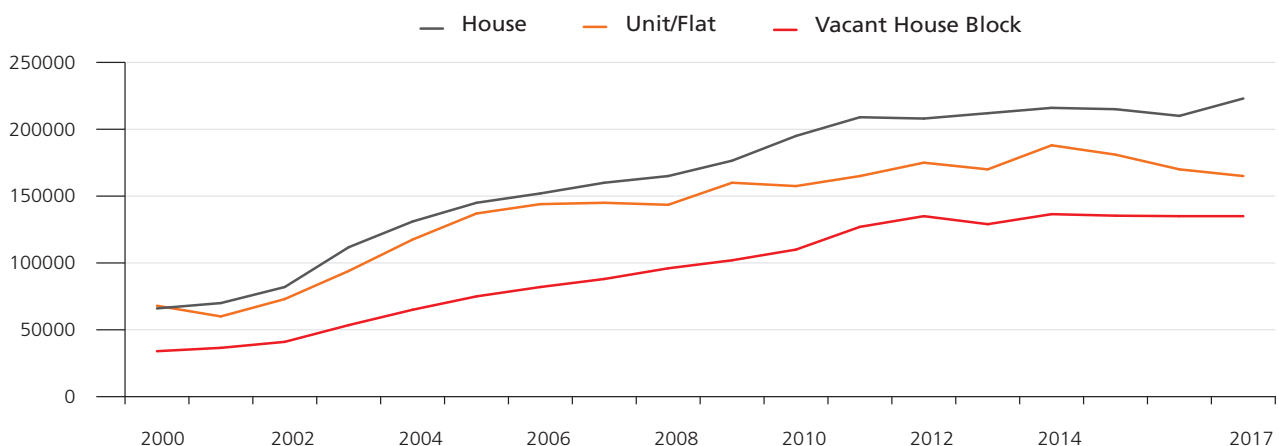
229
DWELLING APPROVALS (2017/18)

\$1.97M
BUILDING APPROVALS (2017/18)

\$240
MEDIAN WEEKLY RENT (DEC 2017)

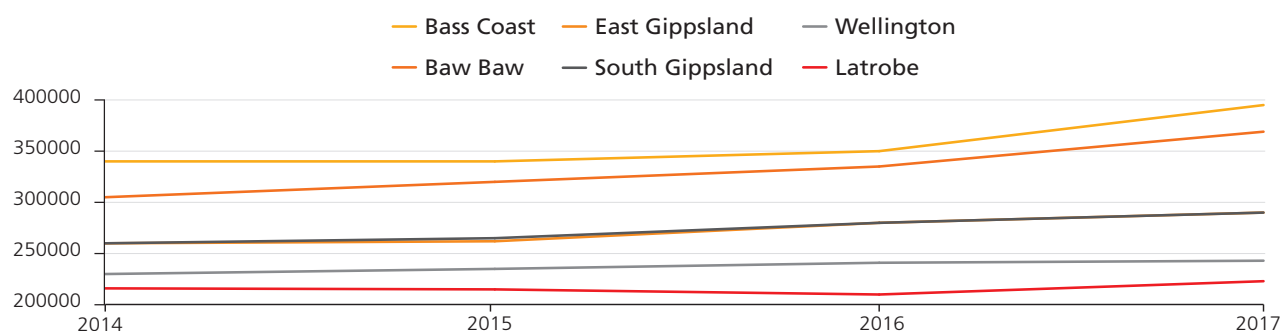
1,361
NUMBER OF HOUSES SOLD (2017)

Latrobe City Median Housing Prices (2000 to 2017)



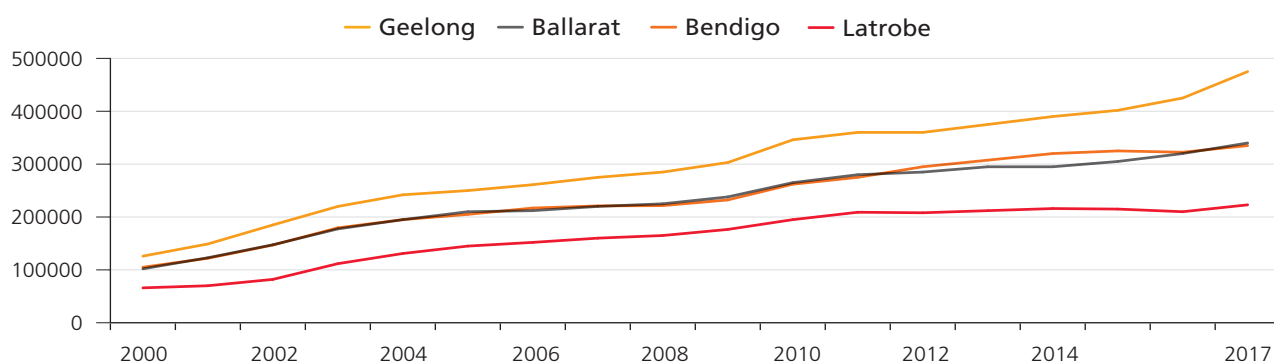
Source: DELWP, 2017

Housing Prices, Latrobe City and other Gippsland's Municipalities



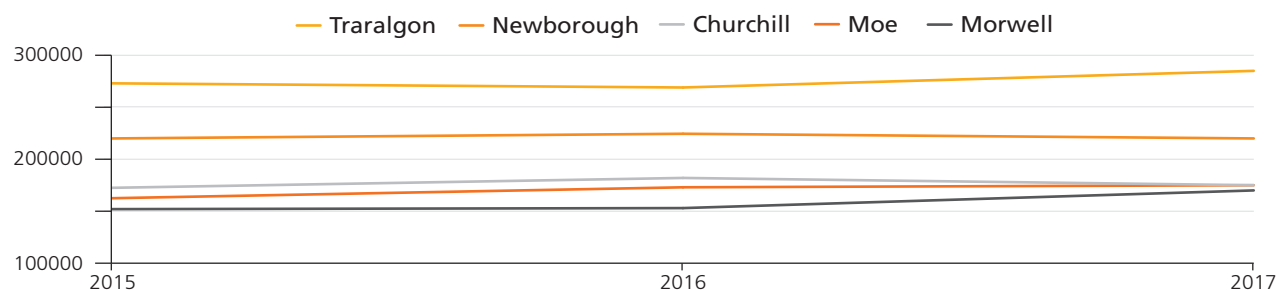
Source: DELWP, 2017

Latrobe City Median House Prices Compared to Regional Cities



Source: DELWP, 2017

Median House Prices, Major Suburbs

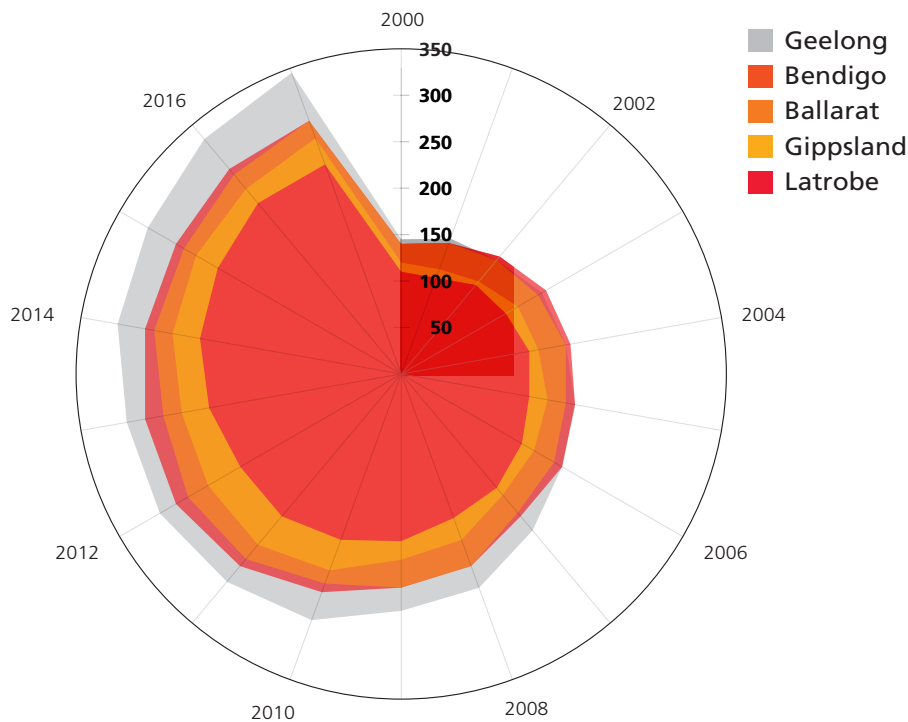


Source: DELWP, 2017

Rental Prices

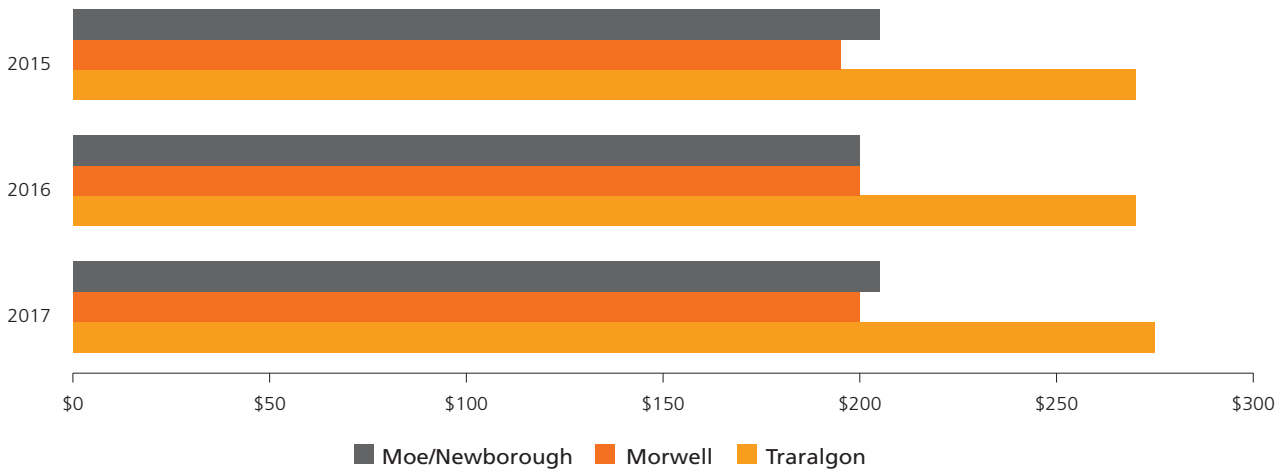
- Latrobe City's rental housing market is relatively affordable for a regional city
- Between June 2015 and December 2017, the median rent price (\$225) has only increased by \$15
- Latrobe City housing prices still remain affordable with a three bedroom house median rent average of \$260
- The median rent for a 2-bedroom flat in Moe-Newborough and Morwell ranks in the lowest suburbs in Regional Victoria

Median Weekly Rental Price Comparison (all properties), Latrobe, Gippsland and Regional Cities



Source: DHHS, 2018

Median Rental Prices, Latrobe Major Suburbs



Source: DHHS, 2018

Housing Affordability

Housing is more affordable relative to income for Latrobe City residents than other Regional Cities in Victoria. The 2016 median rental price is approximately 42.6% of the average personal income.

Ratio of Median 3-Bedroom House Price to Median Personal Incomes (2016)

	LATROBE
Median Personal Income ¹	\$28,385
Median 3Br House Price ²	\$239,000
Ratio	8.42

Please note: ¹Calculated from data extracted from ABS, Census 2016, ²Calculated using REMPLAN Property

Housing Stress (2016)

	LATROBE	GIPPSLAND	VICTORIA
Total Number of Dwellings ¹	34,167	143,266	2,525,539
Mortgaged Dwellings ²	9,616	34,056	748,169
Stressed Mortgaged Dwellings	1,275	5,664	113,385
Mortgage Stress	13.3%	16.6%	15.2%
Rented Dwellings	7,373	23,311	597,847
Stressed Rented Dwellings	3,078	9,745	203,452
Rental Stress	41.7%	41.8%	34.0%
Housing Stress	12.7%	10.8%	12.5%

Source: calculated by REMPLAN from data extracted from ABS, Census 2016

Notes: ¹Occupied Private Dwellings, ²Includes dwellings in 'Rent to Buy Schemes'

Housing Stress

Housing Stress is calculated on 30:40 rule. Stressed households are considered to be in the bottom 40% of households by income and are paying more than 30% of their income in housing costs.

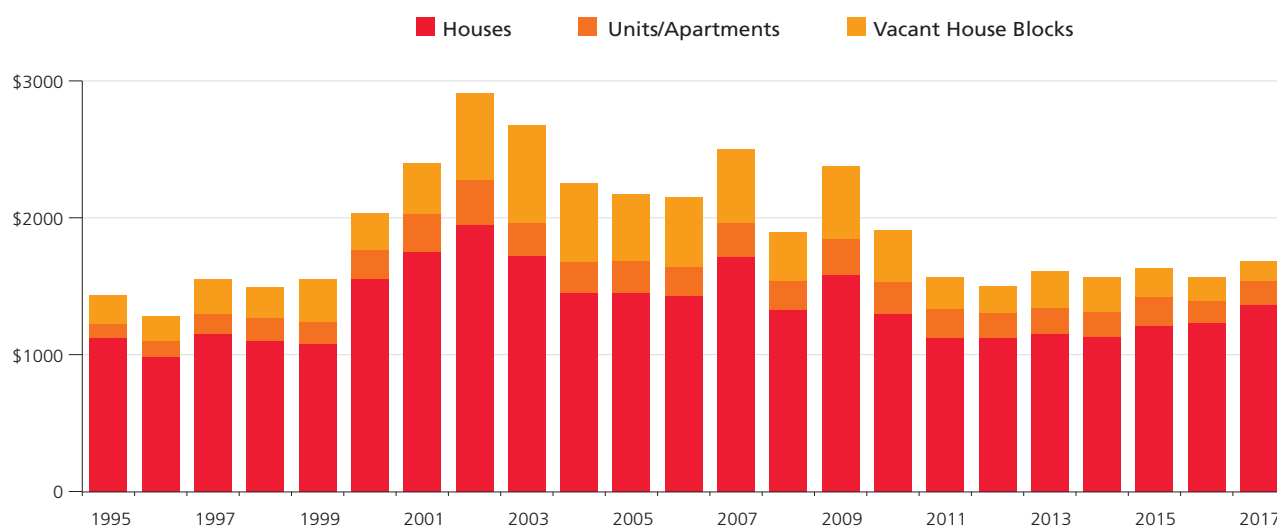
Based on Census data, for a household to be in the bottom 40% of households in Australia they have been assumed to be earning less than \$714 per week.



Residential Sales Volume

- Residential transactions in Latrobe City increased to 1,687 sales in 2017
- There were 8% more property transactions in 2017 when compared to 20 years earlier in 1997

Residential Sales Volumes in Latrobe City (1995 to 2017)



Source: DELWP, 2018

Construction Activity

- The value of construction of new houses totalled \$63.3m in 2017/18 financial year
- In 2017-18, 218 planning permits were issued worth \$108.5m
- A total of 229 dwellings were approved in 2017/18 financial year

Planning Applications and Building Approvals

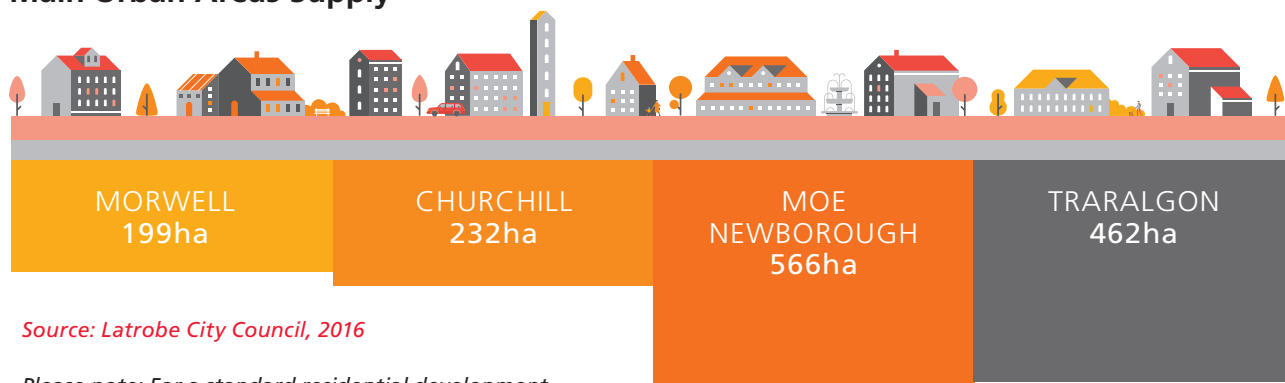
PERIOD	VALUE OF ALL BUILDING APPROVALS	NO. OF DWELLINGS APPROVED	VALUE OF PLANNING APPLICATIONS	NO. OF PLANNING PERMITS ISSUED
2015 to 2016	\$221,608,700	389	\$139,065,233	241
2016 to 2017	\$134,320,500	308	\$100,315,084	256
2017 to 2018	\$197,406,200	229	\$108,476,372	218
Change (last year)	↑ 47%	↓ 26%	↑ 8%	↓ 15%

Source: ABS, 2018; DELWP, 2018

Current Land Supply

- Latrobe City offers excellent rural and urban living opportunities, enhanced by Latrobe City's role as Gippsland's only major regional city
- Structure plans for the four main towns and three of the smaller townships in the municipality have been completed

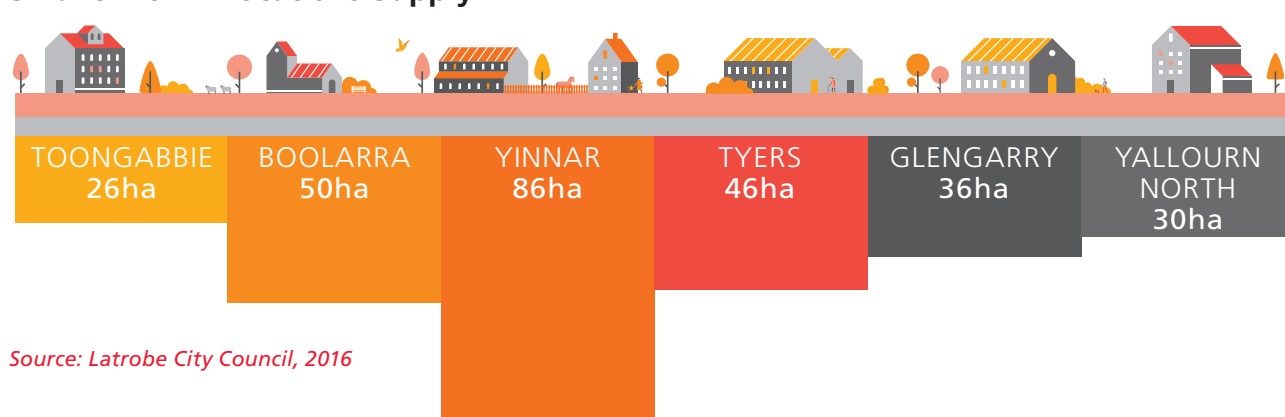
Main Urban Areas Supply



Source: Latrobe City Council, 2016

Please note: For a standard residential development, Latrobe City Council's preferred lot yield is 11 dwelling per net develop-able hectare.

Smaller Town Locations Supply

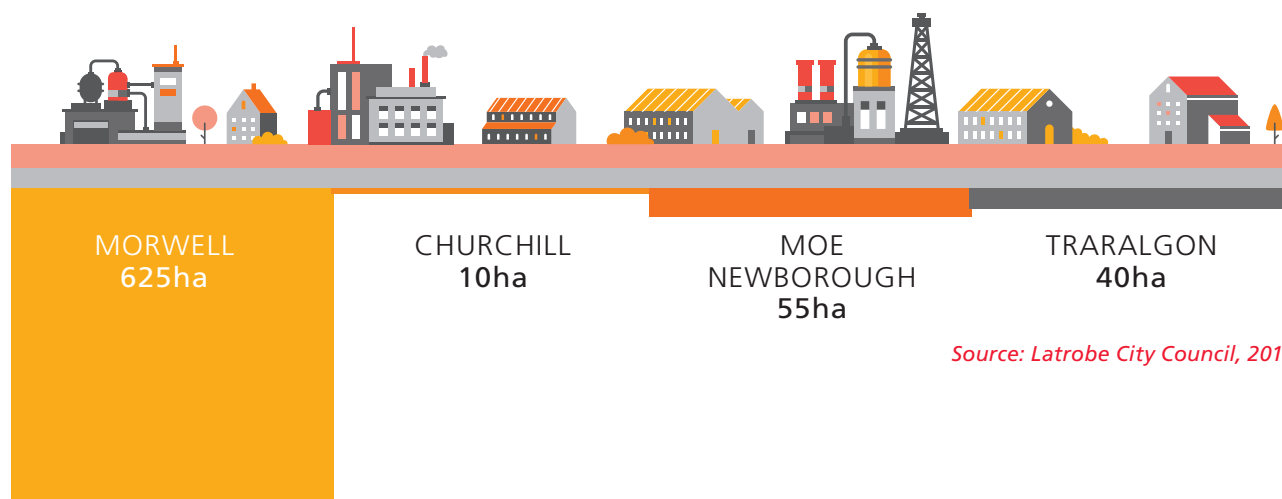


Source: Latrobe City Council, 2016

Existing Industrial Land Supply

As of 2016, Latrobe City has an estimated 1,685ha of zoned industrial land, of which approximately 770ha are occupied and 915ha are vacant. This equates to a vacancy rate of approximately 54% across the municipality.

The Latrobe City Council Industrial and Employment Strategy (2017) provides direction for future industry investment, identifying an estimated 245ha of industry zoned land is suited to light and small scale industry developments, with significant opportunities to expand and establish new heavy and large format industry investment on large sites (including Industrial 2 Zone land) within the Morwell – Maryvale Industry corridor (land situated to north, south and east of Morwell).



Source: Latrobe City Council, 2016

VOLUME 3

Business, Industry and Investment

Latrobe City is the business hub of Gippsland. There are approximately 4,300 businesses and an estimated 32,389 people working in Latrobe City. In 2017, Latrobe City's Gross Regional Product (GRP) was \$4.871 billion with the economic output approximately \$10.798 billion. The largest industries in Latrobe City for employment include healthcare and social assistance, retail trade and public administration.

Key Industries

- In November 2017, Latrobe City's Gross Regional Product was \$4.871 billion which is a 12.2% increase from December 2016
- Latrobe represents 31.24% of the Gippsland regions GRP
- The top industries that make the greatest contribution to GRP are Electricity, Gas, Water and Waste Services, Rental, Hiring and Real Estate Services, Health Care and Social Assistance, Construction and Public Administration and Safety

FAST FACTS



LARGEST INDUSTRY BY EMPLOYMENT (2017)
Health Care and Social Assistance

+ 5,385

599 TOTAL
EVENTS (2017)

GRP (2017)
\$4.87
BILLION



4,289
BUSINESSES (2017)



EMPLOYMENT IN LATROBE CITY
32,389
(2017)

LARGEST OUTPUT (2017)



\$2.39 BILLION



\$6.1 MILLION VISITORS TO GIPPSLAND

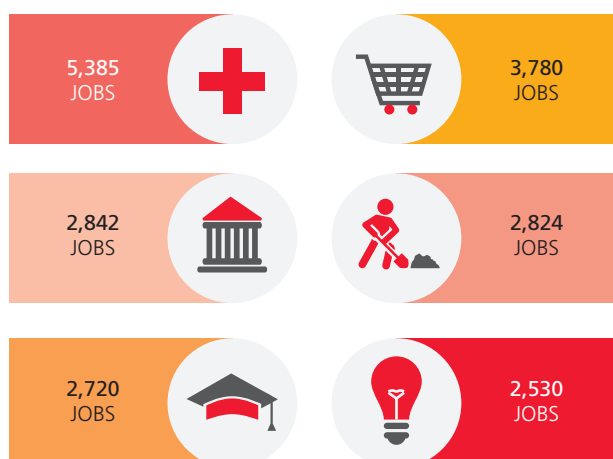


Contributors to Gross Regional Product by Industry, \$M



Source: REMPLAN, 2017

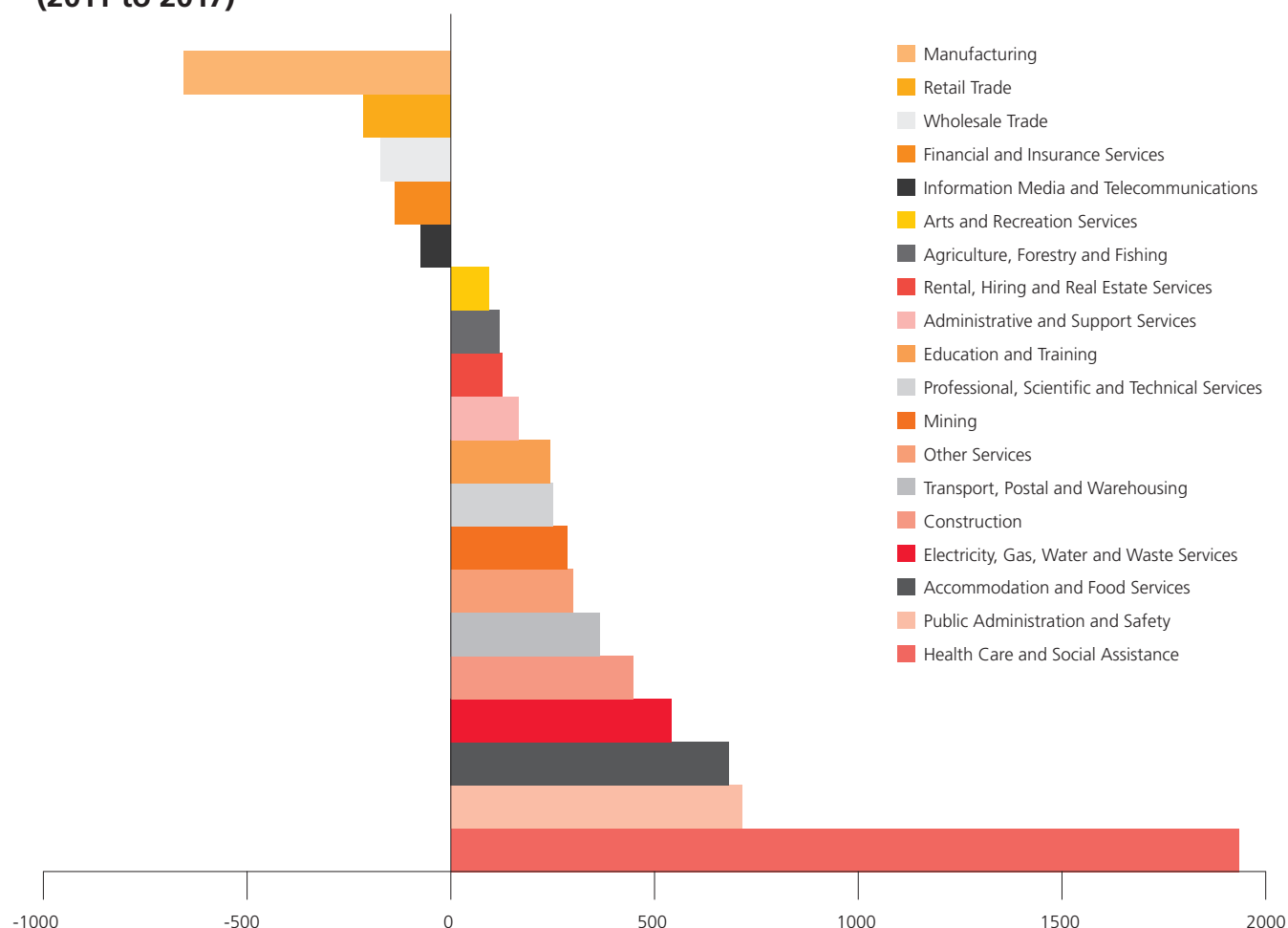
Top Local Industries by Employment (2017)



Source: REMPLAN, 2017

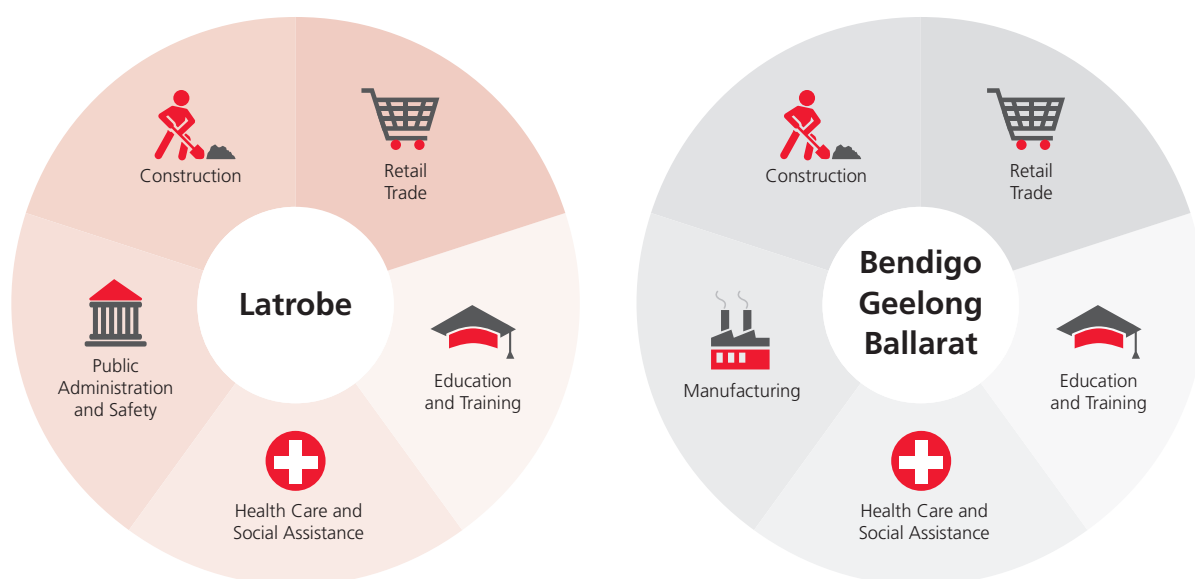


Change in Employment by Industry (2011 to 2017)



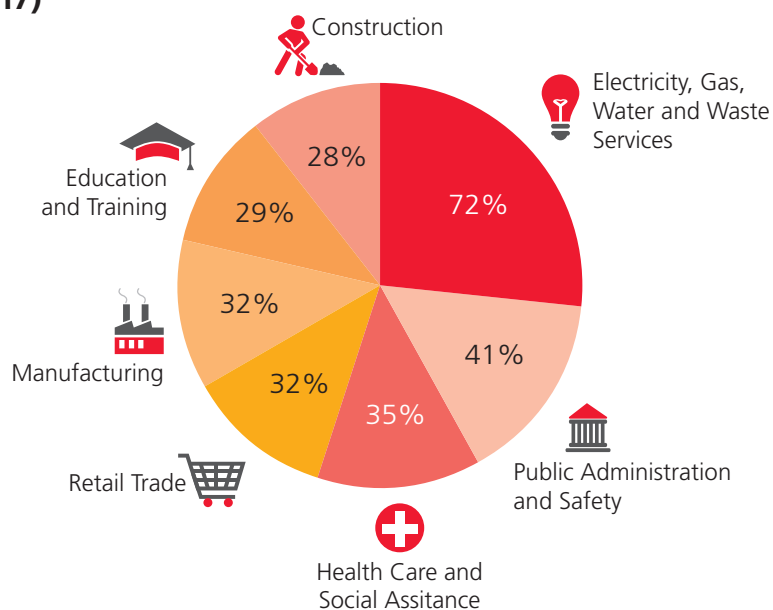
Source: REMPLAN, 2017

Top Employing Industries, Regional Cities (2017)



Source: REMPLAN, 2017

Latrobe's Share of Gippsland Employment (2017)



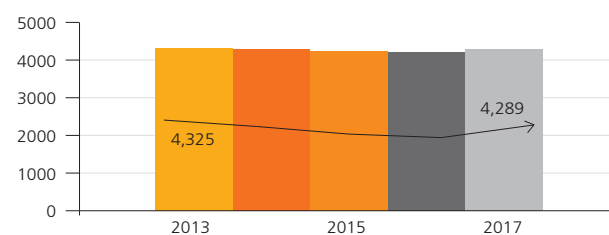
Source: REMPLAN, 2017

Business Environment

- In 2017, there were 4,289 businesses operating in Latrobe City. 1,175 businesses employed between one to four people
- The largest employer for 2018 in Latrobe City was the Latrobe Regional Hospital with approximately 2,000 employees
- Latrobe City Council is the second most economic diverse region in Victoria

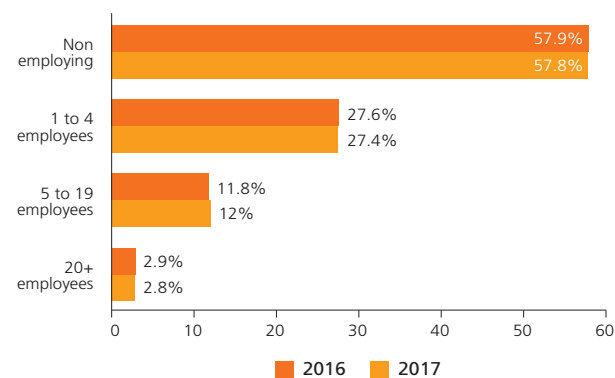


Total Number of Businesses Registered in Latrobe (2013 to 2017)



Source: ABS, 2017

Size of Locally Registered Business (2016 to 2017)



Source: ABS, 2017

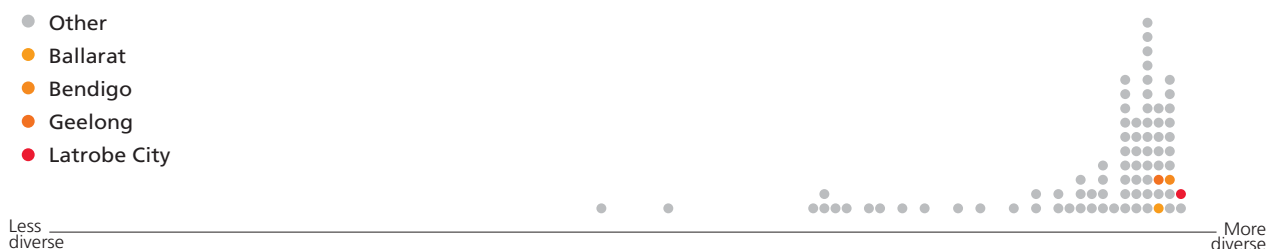
Measure of Economic Diversity

The diversity of Latrobe City's economy is highly ranked against other Victorian Local Government Areas. Based on 2016 Census data it is ranked the second most diverse Local Government Area economy in Victoria and 45th in Australia.

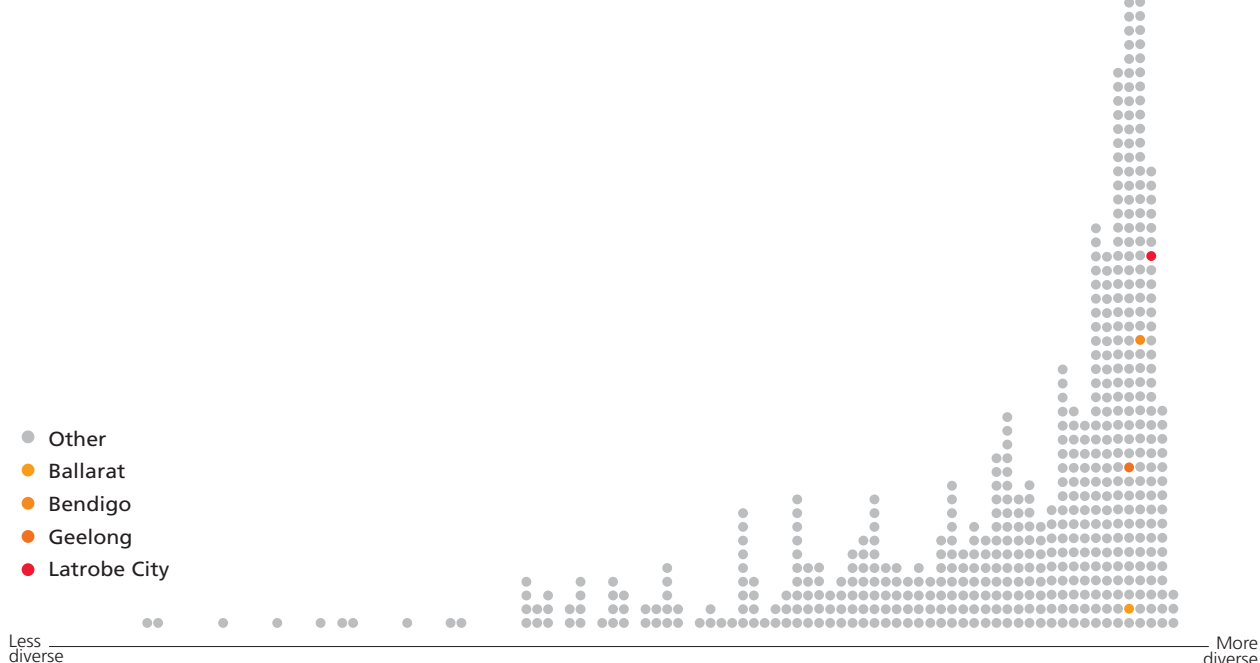
Economic diversity aims to measure the distribution of activity across an economy. A diverse economy will have activity in all sectors, becoming more diverse as the activity is more evenly distributed across all industry sectors. Conversely, an economy which is not diverse will have a concentration of activity in a single, or very small number of industries.

Remplan index of economic diversity applies a similar approach to the calculation of the Herfindahl-Herschman Index, but utilises region specific data for employment by industry, business counts by industry and occupations of workers to determine the level of economic diversity relative to other regions in Australian and the State.

LGA Economic Diversity in Victoria

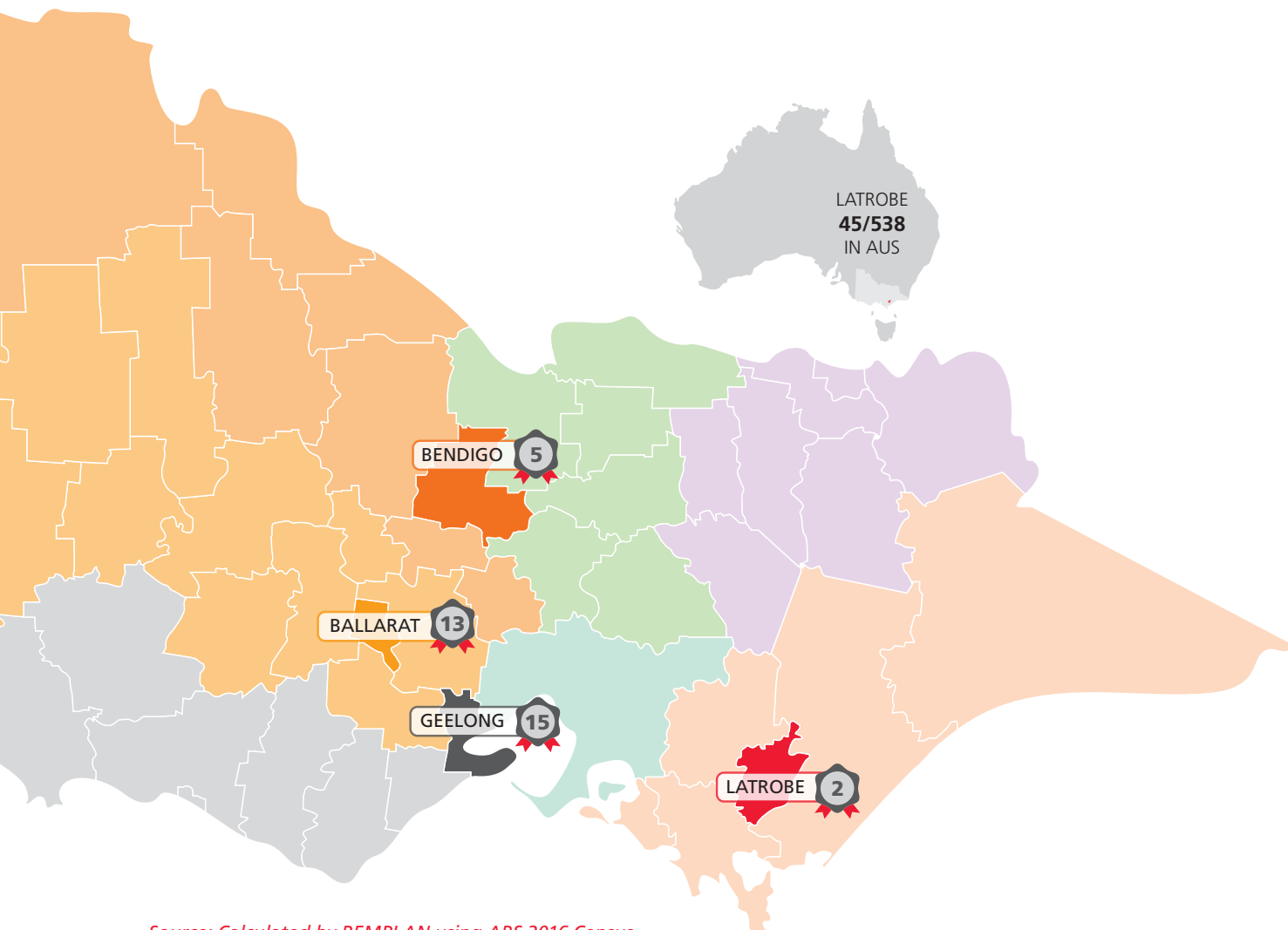


LGA Economic Diversity in Australia



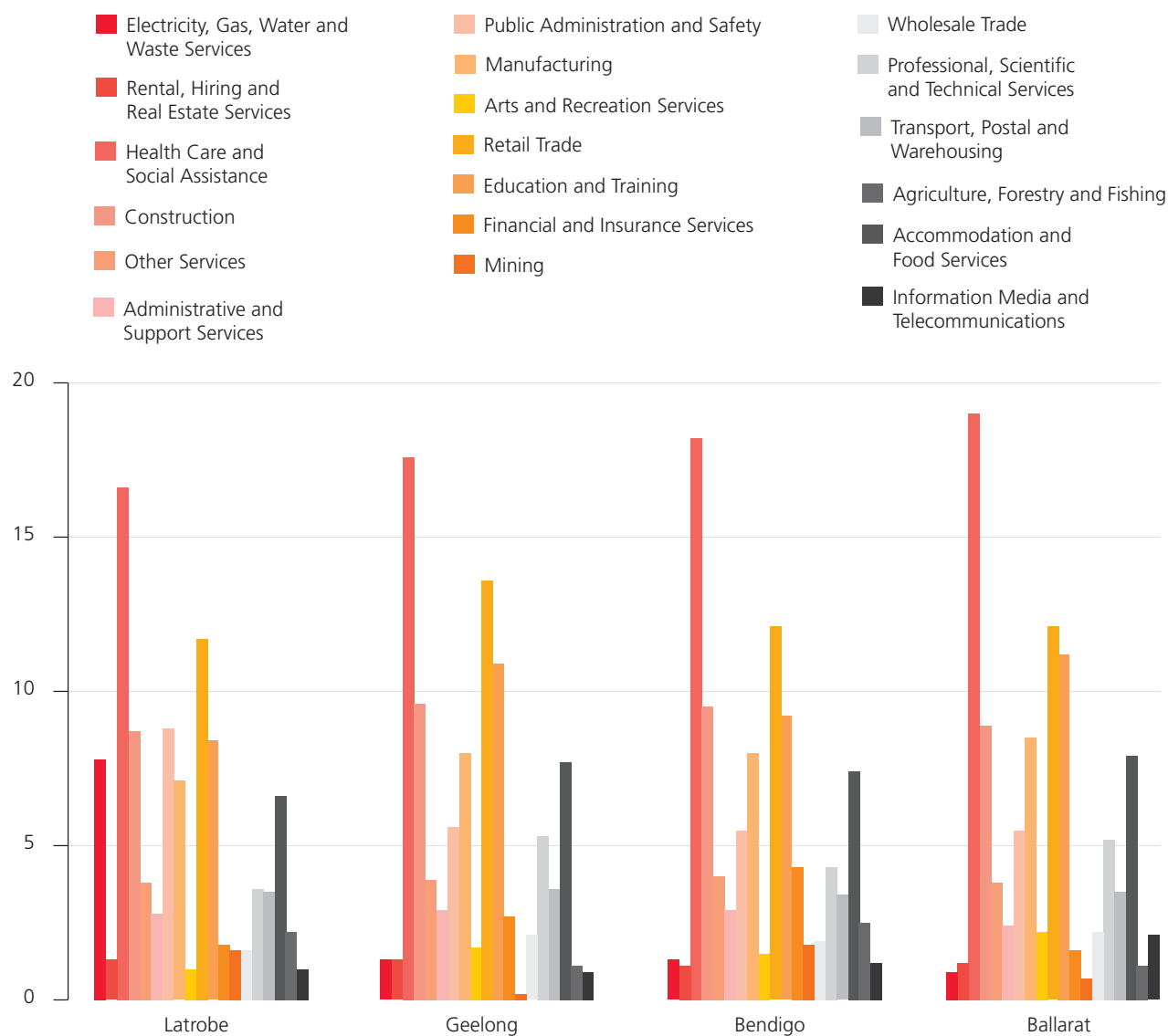
Ranking

Latrobe City ranked second out of 79 in Victoria.



Source: Calculated by REMPLAN using ABS 2016 Census Place of Work Employment; ABS Counts of Australian Businesses, including Entries and Exits Cat. 8165.0.

Top Industries for Employment (2016)



Source: REMPLAN, 2016

Location Quotient

The location quotient formula allows economists to evaluate the strength and size of a particular industry in Latrobe relative to a broader economic region such as the state or nation. Location Quotients are a simple way of identifying the diversity of the local economy.

When the location quotient (LQ) =1 that means local industry is proportionate in size to the benchmarks region.

If $LQ < 1$, the industry is smaller than the broader region and imports may be needed to meet local demand.

If $LQ > 1$, the industry is more than sufficient to meet local demand and is highly concentrated in the local economy.

Economic Strengths

ECONOMIC DIVERSITY (EMPLOYMENT) AS BENCHMARKED AGAINST THE VICTORIAN STATE USING LOCATION QUOTIENT FORMULA	LATROBE	BALLARAT	BENDIGO	GEELONG
Agriculture, Forestry and Fishing	0.85	0.42	0.97	0.41
Mining	0.92	0.43	1.03	0.09
Manufacturing	1.06	1.28	1.19	1.20
Electricity, Gas, Water and Waste Services	6.89	0.81	1.17	1.15
Construction	0.98	1.00	1.06	1.08
Wholesale Trade	0.52	0.72	0.62	0.71
Retail Trade	1.13	1.17	1.17	1.31
Accommodation and Food Services	0.91	1.09	1.02	1.06
Transport, Postal and Warehousing	0.72	0.71	0.68	0.75
Information Media and Telecommunications	0.57	1.21	0.69	0.52
Financial and Insurance Services	0.47	0.43	1.14	0.72
Rental, Hiring and Real Estate Services	0.73	0.68	0.61	0.75
Professional, Scientific and Technical Services	0.48	0.69	0.57	0.70
Administrative and Support Services	0.79	0.66	0.81	0.82
Public Administration and Safety	1.26	0.78	0.79	0.80
Education and Training	0.93	1.23	1.02	1.20
Health Care and Social Assistance	1.26	1.44	1.37	1.33
Arts and Recreation Services	0.58	1.25	0.87	0.96
Other Services	0.97	0.96	1.02	0.99
Region Diversity	1.46	1.09	1.06	1.08

Source: REMPLAN, 2016

Largest Employers in Latrobe City (2018)

BUSINESS	APPROXIMATE NO OF EMPLOYEES
Latrobe Regional Hospital	2,000
Latrobe City Council	963
Australian Paper	847
AGL – Loy Yang	700 (includes 100 contractors)
Department of Human Services	635
Latrobe Community Health	587
Energy Australia	530 (includes 330 contracts)
Federation University	500
ASIC	307
Gippsland Water	287

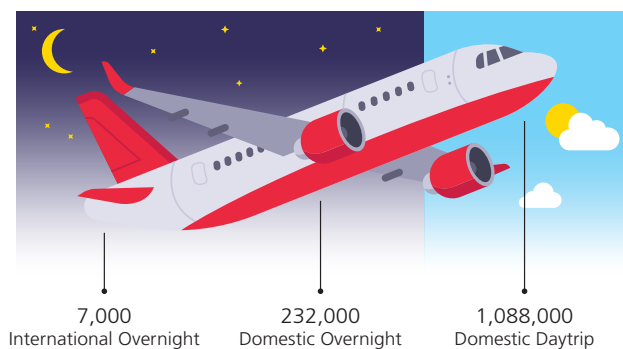
Source: Latrobe City Council, 2018



Visitor Economy

- There was a total of 6,119,000 visitors to Gippsland in 2017/18 of which 1,088,000 visited Latrobe City
- The visitor source into Latrobe City was made up of 44% Melbourne, 42% Regional Victoria, 7% NSW and 7% other

Profile of Visitors to the Latrobe Region



Source: Destination Gippsland, 2018

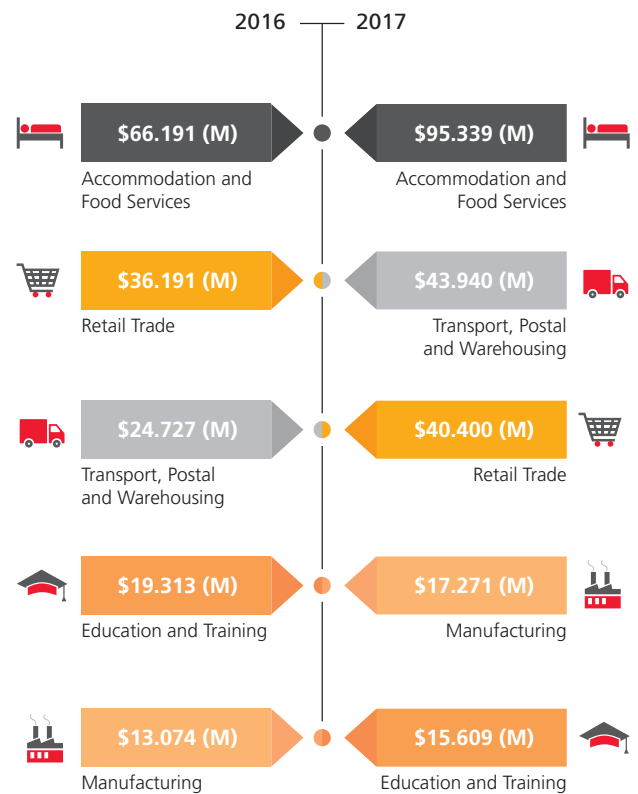
Note: Due to quality issues with the incoming passenger data, International Visitor Survey and total travel results for the YE Mar 18 are preliminary.



Tourism Output Breakdown

Output: \$195,478,000 (2016) \$252,220,000 (2017)

Output attributable to the visitor economy:



Source: Destination Gippsland, 2018

Employment attributed to the visitor economy:



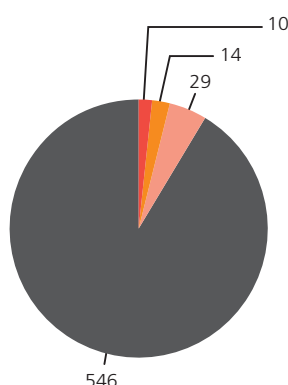
Source: REMPLAN, 2016

Major and Community Events

- Latrobe City's unique selling point for sporting events is the diversity of venues and facilities on offer. Latrobe City Council own and operate a number of these facilities that have enormous capacity to host a variety of sporting events played at all levels of competition
- Sporting events that fill the calendar on a yearly basis include the following sporting codes: AFL and WAFL, FFA, swimming, cricket, water skiing, roller-blading, basketball, netball, baseball, cycling, super cross and motor cross, archery and more
- 599 events were facilitated and managed by Latrobe City Council in 2017. These included international, national, state/regional and local/community events
- New major events were also attracted to Latrobe City including the NBL Blitz, The Big Bash League's Valley Smash Cricket Match, AFLW in season match and AFL pre-season match between Collingwood Vs Bulldogs
- Latrobe City Council support a great number of annual event sponsorships including Latrobe City ATP Men's Challenger Tennis, The Tour of Gippsland, The National Archery Championships, The Latrobe City WIN Traralgon Golf Club Pro-Am, The Latrobe City International Water-ski Championships and The Latrobe City Traralgon Cup

Event Break Down

International National State/Region Local/Community



Source: Latrobe City Council, 2017

Event Economic Impact 2017/18

Direct Spend **\$12.5m**
 Indirect Spend **\$6.2m**
 Total Economic Impact **\$18.7m**
 Local/Community **546**



Source: Latrobe City Council, 2017

Types of Events



Source: Latrobe City Council, 2017

Latrobe City Council events return on investment
\$41/\$1

Latrobe City Council, 2018

VOLUME 4

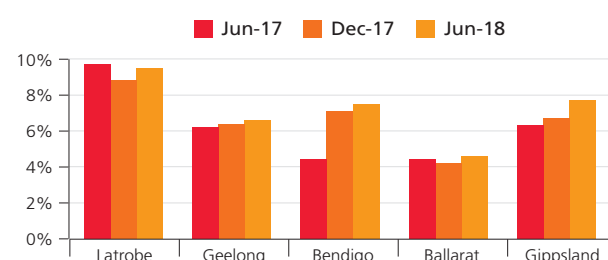
Workforce and Skill

It is estimated that 32,389 people work within Latrobe City which represents 30.65% of the 105,677 people working in the Gippsland region and 1.19% of the working population in Victoria. Despite this, unemployment is high in Latrobe City, at June 2018 unemployment was 9.5%. Latrobe City is home to Federation University Gippsland Campus and TAFE Gippsland the Gippsland tafe provider.

Unemployment

- Latrobe City has an unemployment rate of 9.5% in June 2018 which is higher than the unemployment rate of Gippsland which is 7.7%
- In June 2017 the unemployment rate was 9.7% and decreased by 0.2% in June 2018

Historical and Present Unemployment Rate Latrobe City and Gippsland



Source: REMPLAN, 2018

Source: Small Area Labour Markets, 2018 (June Quarter)

FAST FACTS

LOCAL ENROLMENTS

11,451
SCHOOL

4,940
TAFE

2,134
UNIVERSITY

32,389



LABOUR FORCE
(2017)

9.5%

UNEMPLOYMENT
(JUNE 2018)



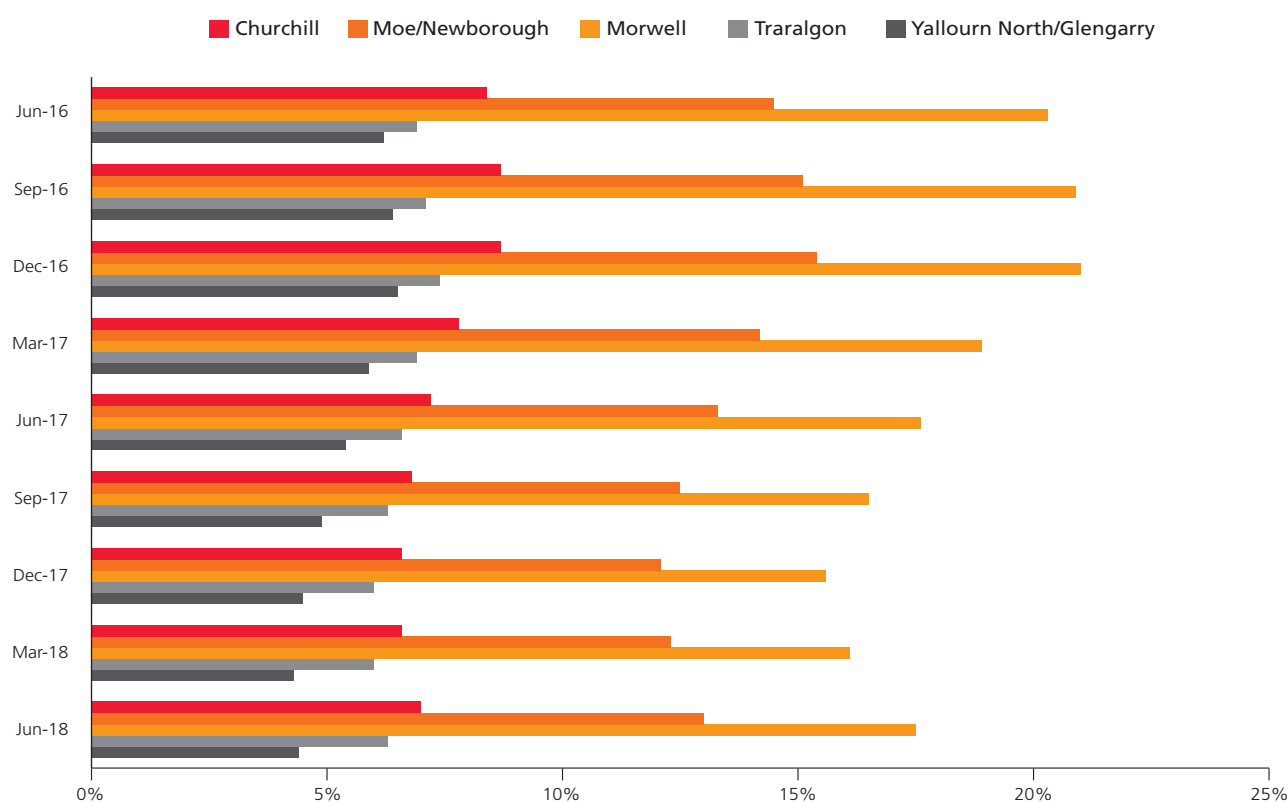
35.1%
YEAR 12
COMPLETION (2016)



15,033
CERTIFICATE LEVEL
COMPLETION (2016)



Local Unemployment Rates in Latrobe City

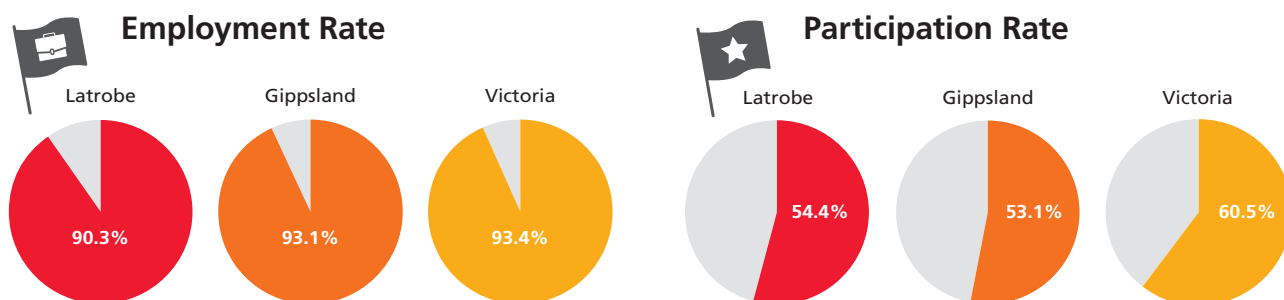


Source: Small Area Labour Markets, 2018 (June Quarter)

Labour Force Participation

Labour Force (2016)

LGA (UR)	LATROBE	GIPPSLAND	VICTORIA
Employed, worked full-time	16,855	61,494	1,670,557
Employed, worked part-time	10,736	41,228	920,876
Employed, away from work	1,901	7,692	144,694
Unemployed, looking for full-time work	2,107	5,160	103,129
Unemployed, looking for part-time work	1,045	3,065	90,340
Not in the labour force	22,395	87,036	1,610,132
Not stated	4,958	17,793	305,978
Not applicable	13,260	47,799	1,080,918
TOTAL	73,257	271,267	5,926,624



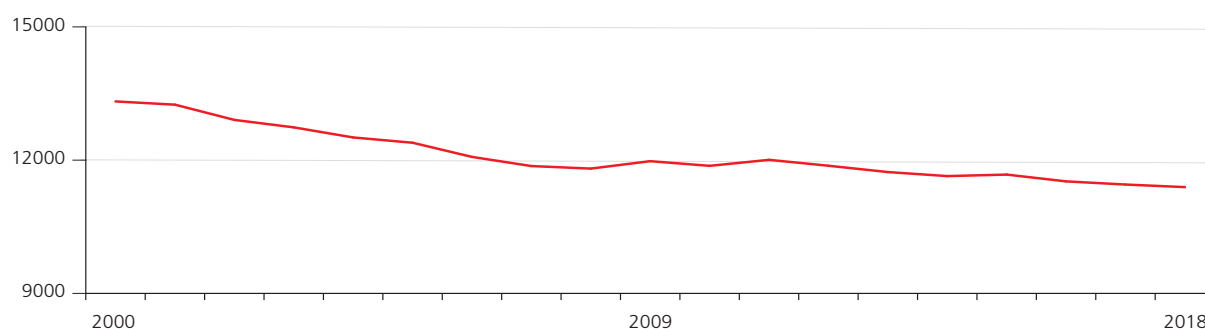
Source: Census of Population and Housing, 2016, TableBuilder

Skills, Education and Training

- In Latrobe City there are 31 Primary Schools, 12 Secondary Schools, 1 University (Federation University), 3 Tafe Campuses (TAFE Gippsland) and 3 Special Schools

TAFE Gippsland had 4,940 course enrolments in 2017 for the three campuses in Latrobe City

Total School Enrolments (2000 to 2018) February



Source: Department of Education and Training, 2018

Post-Compulsory Qualifications (2016)

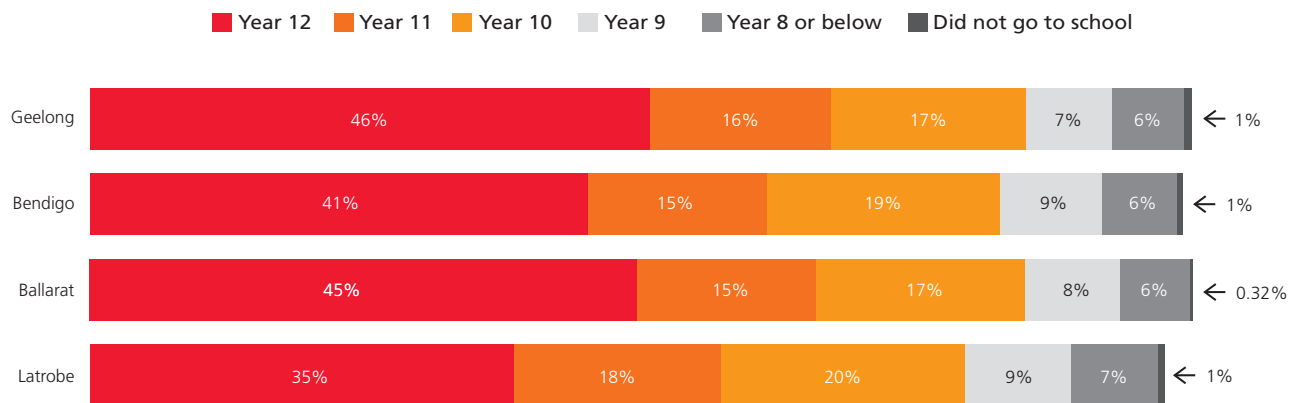
LGA	LATROBE	BALLARAT	BENDIGO	GEELONG
Post Grad	2.71%	5.74%	4.21%	5.38%
Grad Diploma and Grad Certificate	2.65%	4.76%	4.35%	3.93%
Bachelor Degree	13.88%	22.05%	19.52%	22.07%
Advanced Diploma and Diploma	13.19%	14.56%	14.10%	15.99%
Certificate Level	44.50%	35.44%	38.60%	35.13%
Inadequately Described	0.97%	0.99%	1.08%	1.08%
Level of Education not stated	22.02%	16.45%	18.14%	16.41%

Source: REMPLAN, 2016

This data set excludes people that fall within the "not applicable" category.

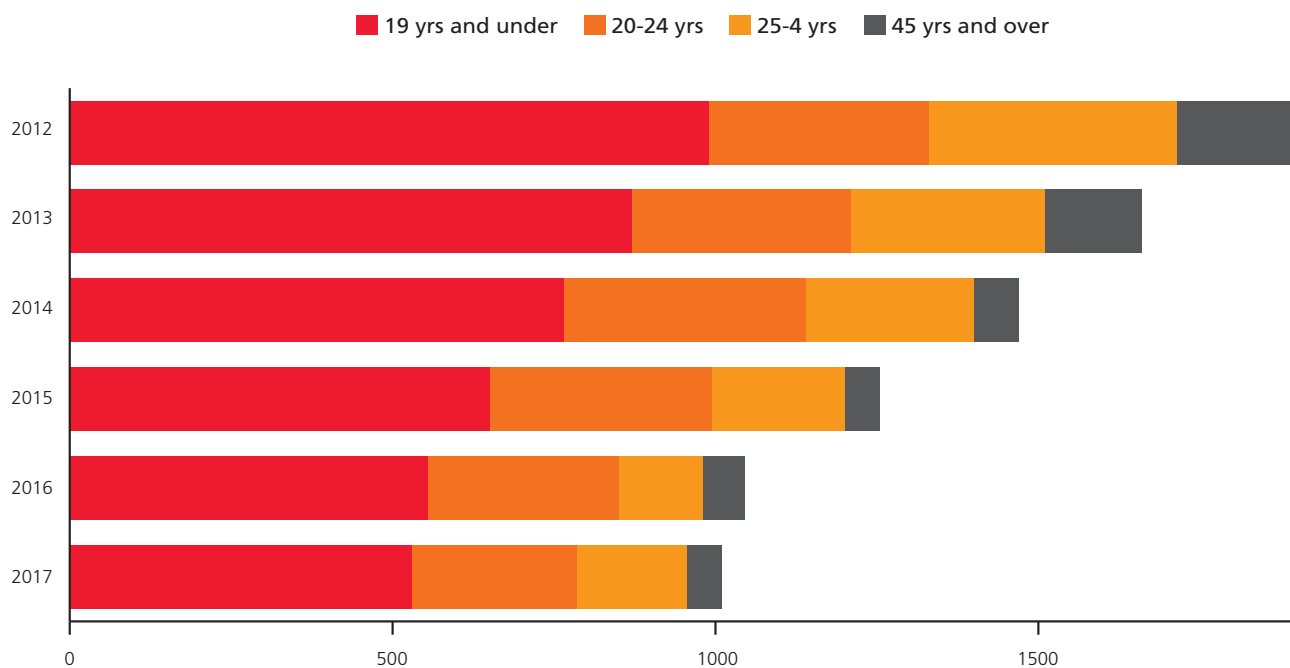
Not applicable includes - Persons who have a qualification that is out of scope of this classification, Persons with no qualification, Persons still studying for a first qualification, Persons aged under 15 years.

Highest Level of Schooling (2016)



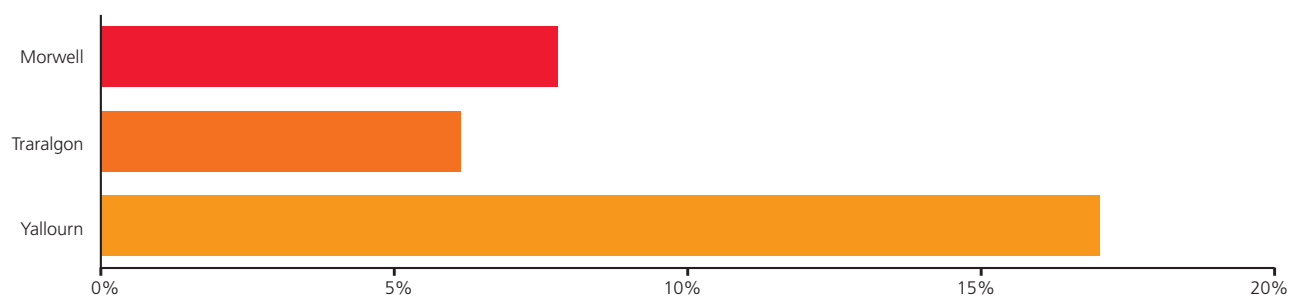
Source: REMPLAN, 2016

Proportion of Population aged 15+ Apprentices and Trainees in Latrobe City



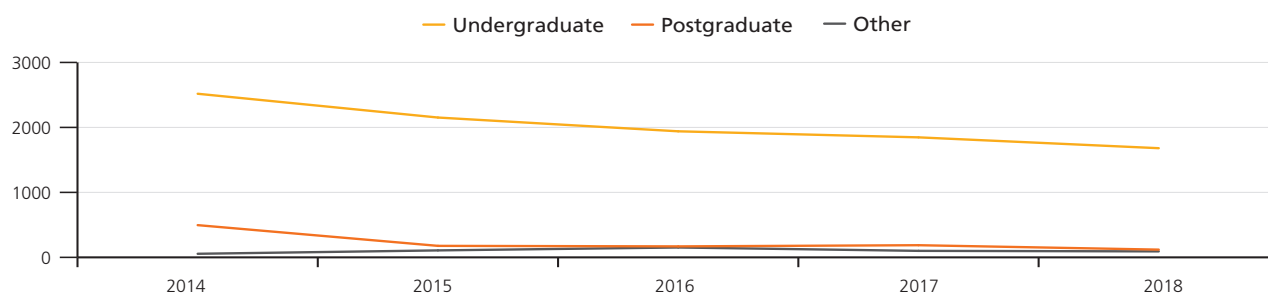
Source: National Apprentice and Trainee Collection, March 2018 estimates, unpublished

TAFE Course Enrolments (2017)



Source: TAFE Gippsland, 2017

Federation University Enrolments by Qualification Gippsland Campus

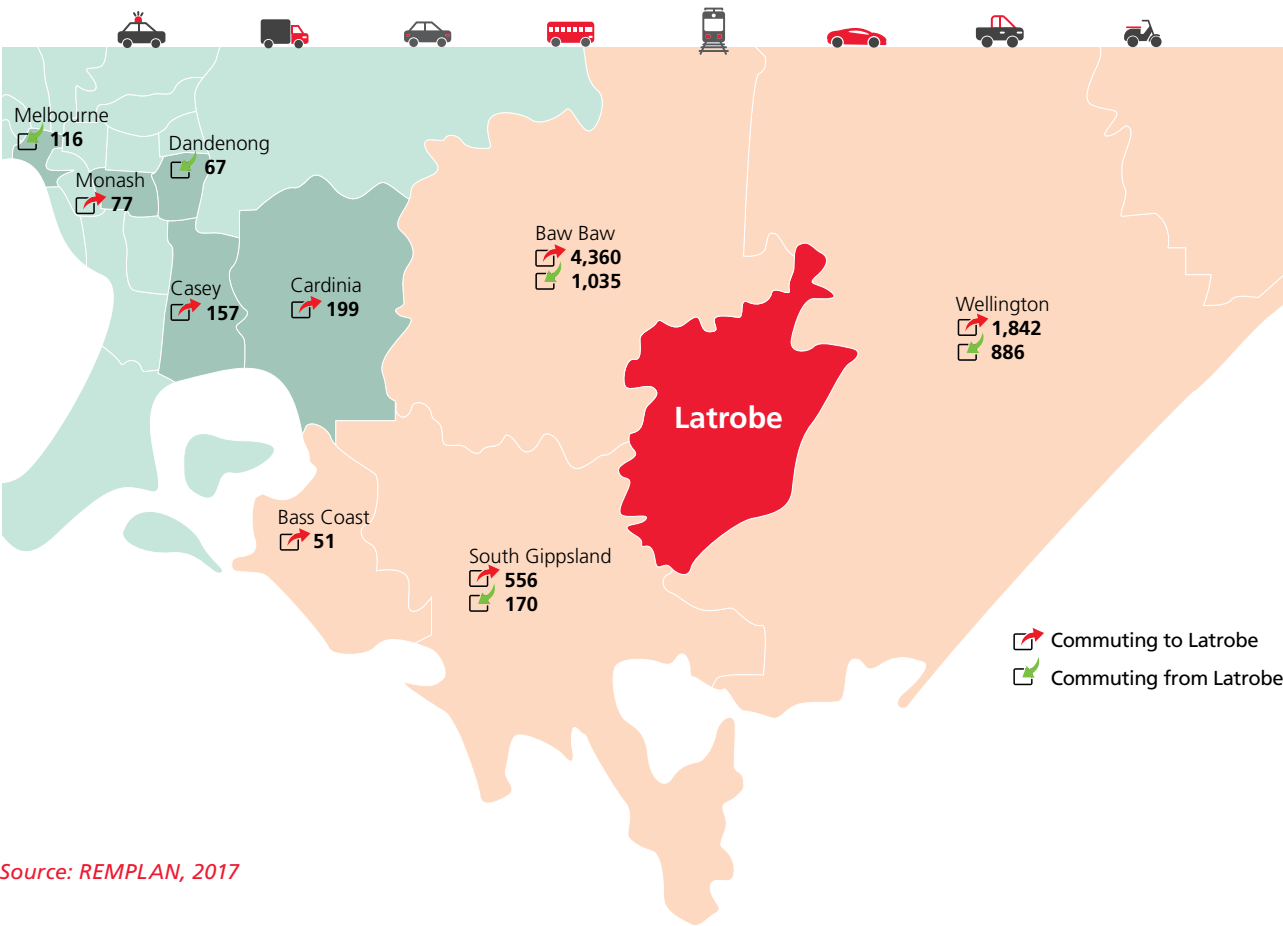


Source: Federation University, 2018

Note: 2018 numbers are as of 29/08/2018 and this would be subject to change once 2018 is over. The total enrolment is a distinct count of students and does not factor students who have changed programs during the semesters. The individual count may be higher for this reason.

Commuting and Transport

People Commuting to and from Latrobe City for Work (2017)



Travel to Latrobe for Work by Destination and Mode (2016)

ORIGIN	PERSONS		PERCENTAGE		
	TOTAL	PUBLIC TRANSPORT	PRIVATE MOTOR VEHICLE	WORKED FROM HOME	DID NOT GO TO WORK
Latrobe City	24,831	0.64%	79.34%	2.91%	12.40%
Baw Baw Shire	2,800	1.28%	82.11%	0.54%	12.32%
Wellington Shire	1,304	0.00%	83.82%	0.77%	13.34%
South Gippsland Shire	476	0.00%	85.92%	1.05%	11.97%
Cardinia Shire	200	4.50%	76.50%	4.00%	12.50%
City of Casey	163	4.91%	80.37%	1.84%	9.20%

Source: REMPLAN 2016



References

- ABS, 2016. **Australian Census 2016**. Australian Bureau of Statistics, Canberra.
- DELWP, 2018. **Property Prices**. Department of Environment, Land, Water and Planning, Melbourne
- Department of Education and Training, 2017. **School Reporting and Data Services Group, Performance and Evaluation Division**. Department of Education and Training, Melbourne.
- Destination Gippsland, 2018. **Visitor Statistics**. Destination Gippsland, Mirboo North
- DHHS, 2018. **Rental Report**. Department Health and Human Services, Melbourne
- Tafe Gippsland, 2017. **Annual Report**. Tafe Gippsland, Gippsland
- Federation University, 2018. **FedUni Students for Gippsland campus split by Level type and Course of study type, unpublished**. Federation University, Churchill.
- NCVER, 2017. **National Apprentice and Trainee Collection – unpublished**. National Centre for Vocational Education Research, Adelaide
- Remplan, 2016. **Community Remplan**, Bendigo
- Remplan, 2017. **Economy Remplan**, Bendigo
- Small Area Labour Markets, 2018. **Small Area Labour Markets publication**. Department of Jobs and Small Business, Melbourne
- Victoria in Future, 2016. **Land use and population research**. Department of Environment, Land, Water and Planning, Melbourne.

To obtain this information in languages other than English, or in other formats (including audio, electronic, Braille or large print) please contact Latrobe City Council on 1300 367 700.

Information within this document was correct at time of print and is subject to change without prior notice.





