

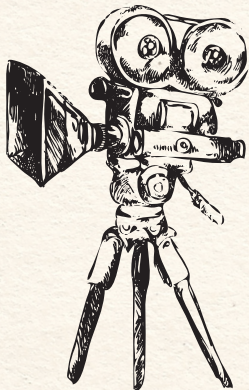
NEWS UPDATE

Congratulations to the Latrobe Valley Express on their 60-year anniversary

Here's a throwback to 1965

Latrobe City Council extends its congratulations to the Latrobe Valley Express on the milestone of 60 years in publication.

Since its inception in 1965, the Express has been a trusted source of news and information for communities across Latrobe City and Gippsland. For six decades, it has played an integral role in informing, connecting, and reflecting the voices of locals, while also providing a vital platform for local businesses, events, and community groups.



Council recognises the hard work and dedication of the editorial team, journalists, photographers and all those who have contributed to the publication over the years.

We thank the Latrobe Valley Express for their continued service and look forward to seeing the newspaper thrive for many years to come.



Latrobe Valley Community Hospital, Newborough. Image credit: Moe, Historical Society.

Things looked a bit different in 1965!

Churchill only had two houses, the Traralgon drive-in theatre had just opened, and there was talk of renaming Morwell to Churchill.

In 1965, Latrobe City was experiencing significant industrial growth and population increase due to the expansion of the State Electricity Commission (SEC) and the development of the Hazelwood Power Station.

In Morwell in 1965, the Latrobe Valley Hospitals and

Health Services building was revamped at a cost \$60,000. The new building opened on 19 November 1965.

Paddle Brothers Shoes opened their factory on 15 March 1965 on Elgin Street; the first manager was Harry Digby.

There was some community talk of renaming Morwell to Churchill in the first edition of the Express!

The town of Churchill was established in 1965. It was

originally a purpose-built town for State Electricity Commission employees. Minister for Housing at the time, Lindsey Thompson said "It is doubtful whether any Victorian town had been more carefully planned."

The Traralgon drive-in theatre opened in 1965 and the Traralgon City Soccer Club ceased operations in the same year.

Grey Street Primary School celebrated its 50-year anniversary in 1965.

J. C Hourigan was the successful tenderer for building a \$21,000, three span concrete bridge over the Hospital Creek on the Princes Highway. Total improvements and re-alignment work at the Hospital Creek section of the highway were estimated to cost a total of \$150,000 (which is worth approximately \$1,530,785.71 today).

Steam trains were starting to be phased out, with one of the last runs occurring from Warragul to Traralgon.



Moe Civic Theatre. Image credit: Moe, Historical Society.

The Moe Civic Theatre closed in 1965 and was then used as a town hall.

In the same year, the Newborough North Post Office opened and was later closed within a year.

Moe itself was undergoing significant growth during this period, including the construction of the bottom nine

holes of the Moe Golf Club.

The Valencia Shoe Factory was built on the corner of Savage's Road and Bell Street.

At the time, Moe was known for industries like engineering, processing, and dairy farming.