

BALDWIN ROAD -
DEVELOPMENT PLAN
TRARALGON
LANDSCAPE MASTERPLAN

Millar Merrigan

Land Development Consultants

Millar & Merrigan Pty Ltd | ACN 005 541 668
Croydon 2/126 Merrindale Drive, Croydon VIC 3136
Morwell 156 Commercial Road, Morwell VIC 3840
Yarrawonga 91 Belmore Street, Yarrawonga VIC 3730
mail@millarmerrigan.com.au | millarmerrigan.com.au
(03) 8720 9500 | SAI GLOBAL Quality ISO 9001

Civil Engineering
Land Surveying
Asset Recording
Landscape Architecture
Project Management
Town Planning
Building Design
Structural Engineering

Millar & Merrigan authorize the use of this drawing only for the purpose described by the status stamp shown below. This drawing should be read in conjunction with all relevant contracts, specifications, reports & drawings.
© Millar & Merrigan Pty. Ltd.

CONTENTS

- 1. INTRODUCTION
- 2. LANDSCAPE MASTERPLAN
- 3. TREE RETENTION & REMOVAL PLAN
- 4. STREET TREE MASTERPLAN
- 5. RESERVE 1
- 6. RESERVE 2
- 7. RESERVE 3
- 8. RESERVE 4
- 9. RESERVE 5
- 10. INDICATIVE PLANTING SCHEMING
- 11. MAINTENANCE

2.	Amended as per council comments	■	■	Feb 2025
1	Prepared for planning purposes	■	■	August 2024
No.	Revision Description	Drawn	Checked	Date

TO BE APPROVED



01.

INTRODUCTION

BALDWIN ROAD DP

The local character of Traralgon will influence this development through landscape design choices, creating a local sense of place and connectivity with neighbouring developments.

The objective of the Baldwin North DP is to generate additional opportunities for landscape character in a public realm, including the following:

- Introduce suitable plantings of deciduous street trees to provide solar access during the winter and introduce seasonal landscape character.
- Provide a plant palette that contributes to the local ecology of the site whilst recognising the constraints of an urban environment and a changing climate.
- Provide further connection to current and future neighbouring developments.

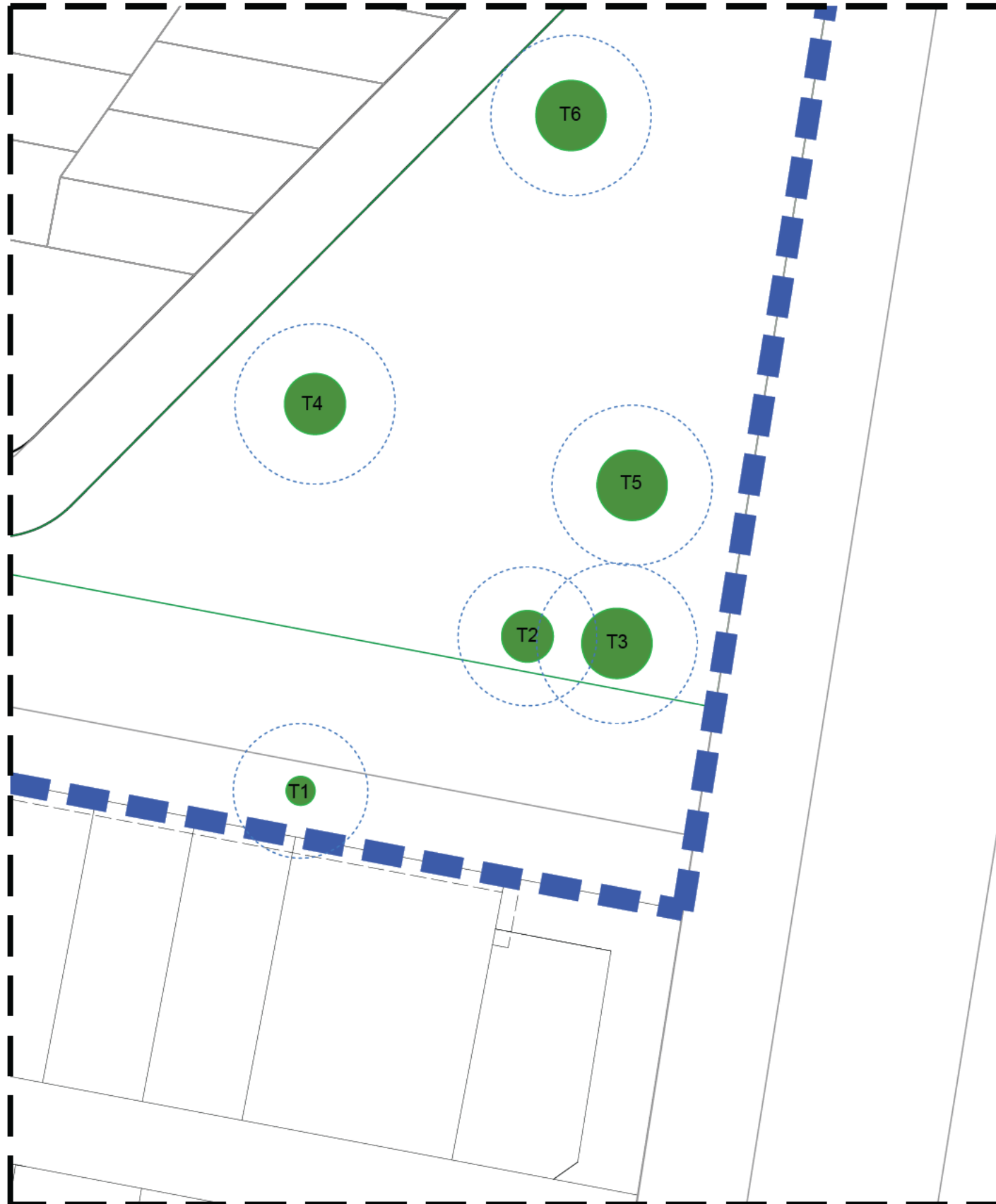


LANDSCAPE MASTERPLAN



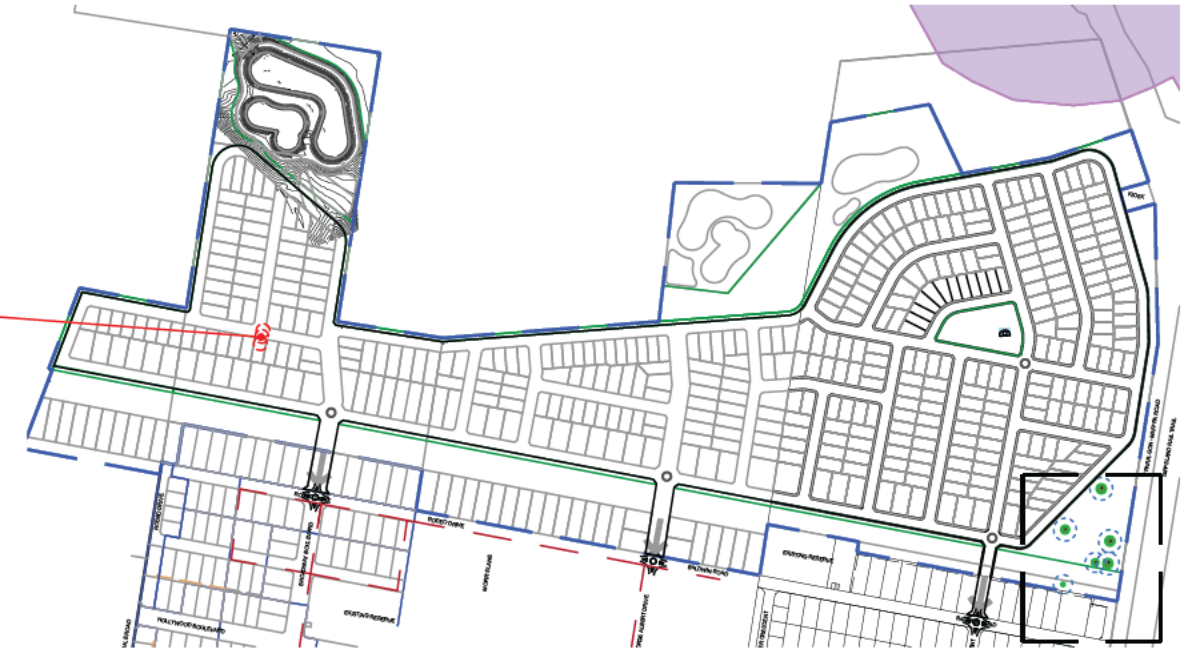
03.

TREE RETENTION & REMOVAL



Refer to the Native Vegetation Assessment completed by ID Ecological Management dated June 2024 for further vegetation information

T12,13,14 to be removed as per below table



Trees for Retention

Tree no.	Botanical name	Common Name	DBH	Origin	Size category	TPZ
1	<i>Eucalyptus tereticornis subsp. mediana</i>	Gippsland Red-gum	105	Locally Indigenous	Large	12.6
2	<i>Eucalyptus tereticornis subsp. mediana</i>	Gippsland Red-gum	108	Locally Indigenous	Large	13.0
3	<i>Eucalyptus tereticornis subsp. mediana</i>	Gippsland Red-gum	130	Locally Indigenous	Large	15.0
4	<i>Eucalyptus tereticornis subsp. mediana</i>	Gippsland Red-gum	160	Locally Indigenous	Large	15.0
5	<i>Eucalyptus tereticornis subsp. mediana</i>	Gippsland Red-gum	172	Locally Indigenous	Large	15.0
6	<i>Eucalyptus tereticornis subsp. mediana</i>	Gippsland Red-gum	151	Locally Indigenous	Large	15.0

Trees for Removal

Tree no.	Botanical name	Common Name	DBH	Origin	Size category	TPZ	Comments
12	<i>Eucalyptus ovata</i>	Swamp Gum	22	Locally Indigenous	Small	2.6	Planted in row
13	<i>Eucalyptus ovata</i>	Swamp Gum	42	Locally Indigenous	Small	5.0	Planted in row
14	<i>Eucalyptus ovata</i>	Swamp Gum	34	Locally Indigenous	Small	4.1	Planted in row

04.

INDICATIVE STREET TREE PLAN

Species have been selected Latrobe City Council Tree List dated July 2022, or as per species proposed in the developments to the south



Acer x freemanii
'Autumn Blaze'
13.0 x 10.0



Acer rubrum 'October Glory'
13.0 x 9.0



Angophora hispida
8.0 x 6.0



Hymenosporum flavum
10.0 x 8.0



Eucalyptus leucoxylon rosea
15.0 x 7.0



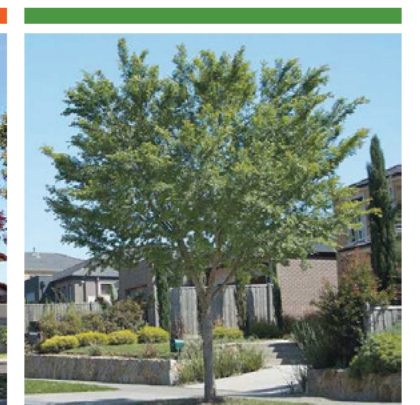
Eucalyptus mannifera
'Little Spotty'
7.0 x 5.0



Melia azedarach 'Lilac Lady'
10.0 x 8.0



Pistachia chinensis
8.0 x 6.0



Ulmus parvifolia 'Todd'
10.0 x 11.0

05.

RESERVE 1

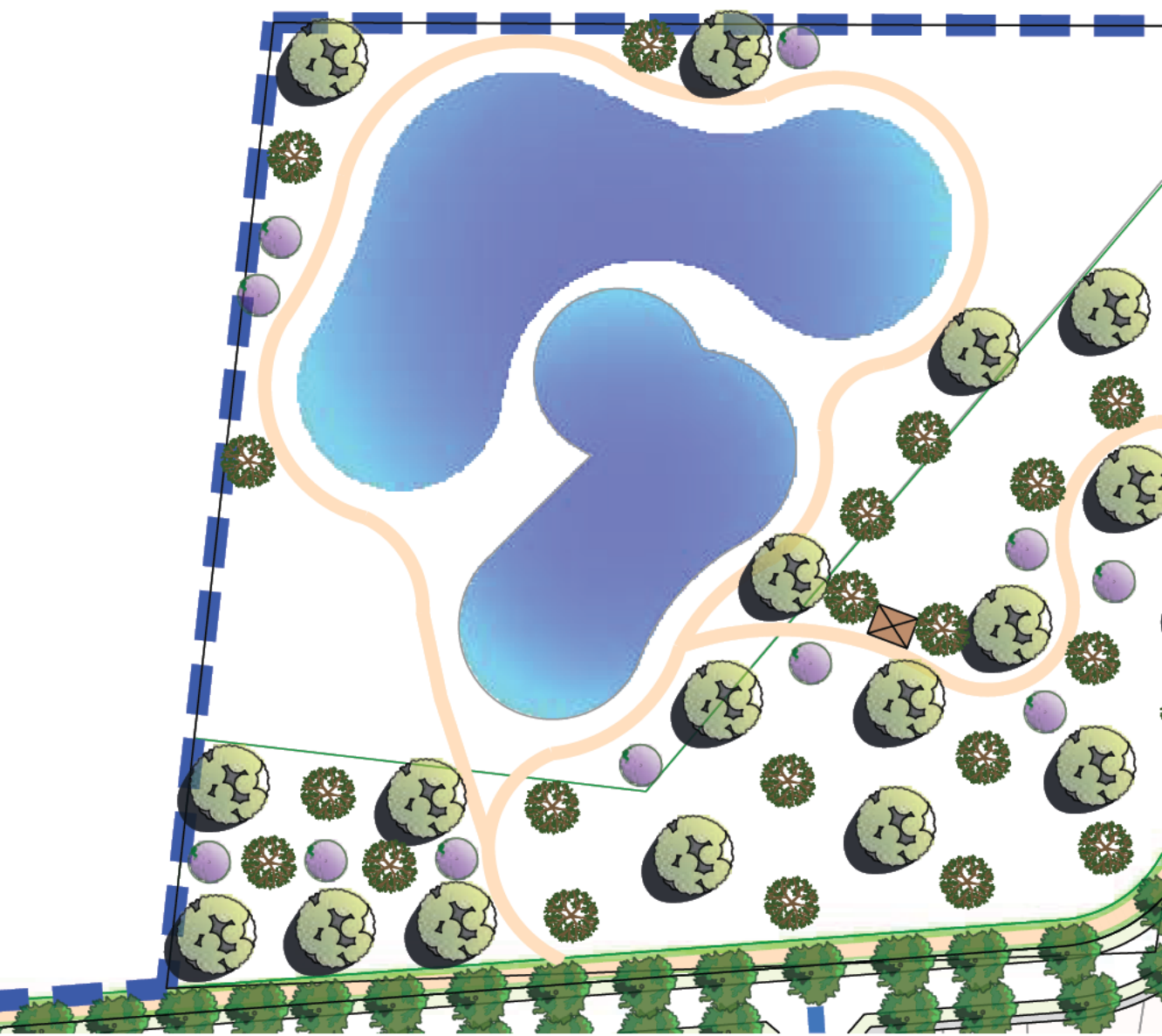


Proposed wetland



Share paths, canopy trees and open space proposed within Reserve 1

RESERVE 2



WETLAND CURRENTLY UNDER CONSTRUCTION



Proposed wetland



Proposed shelter



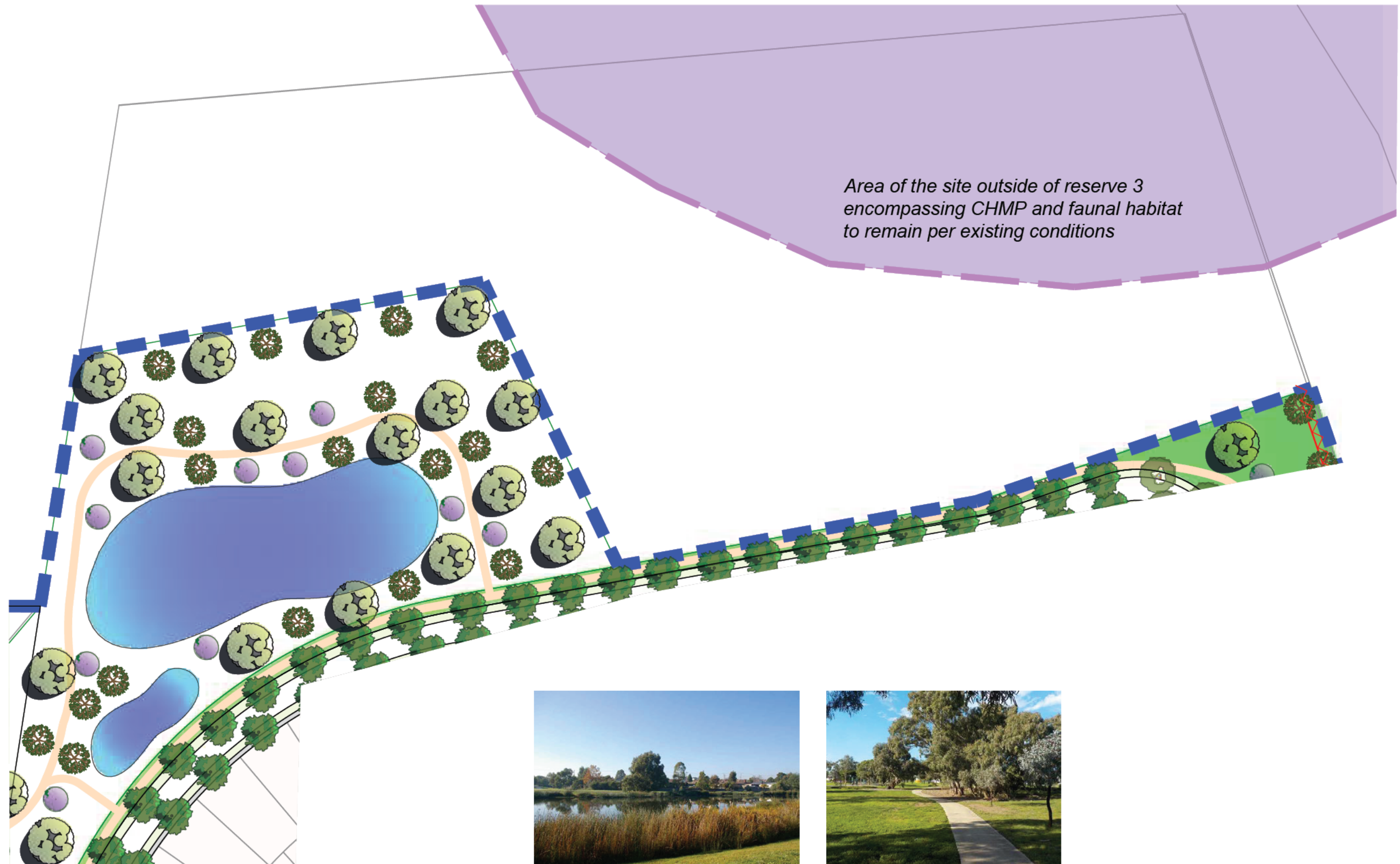
Share paths, canopy trees and open space proposed within Reserve 2



Indicative park bench with back

07.

RESERVE 3



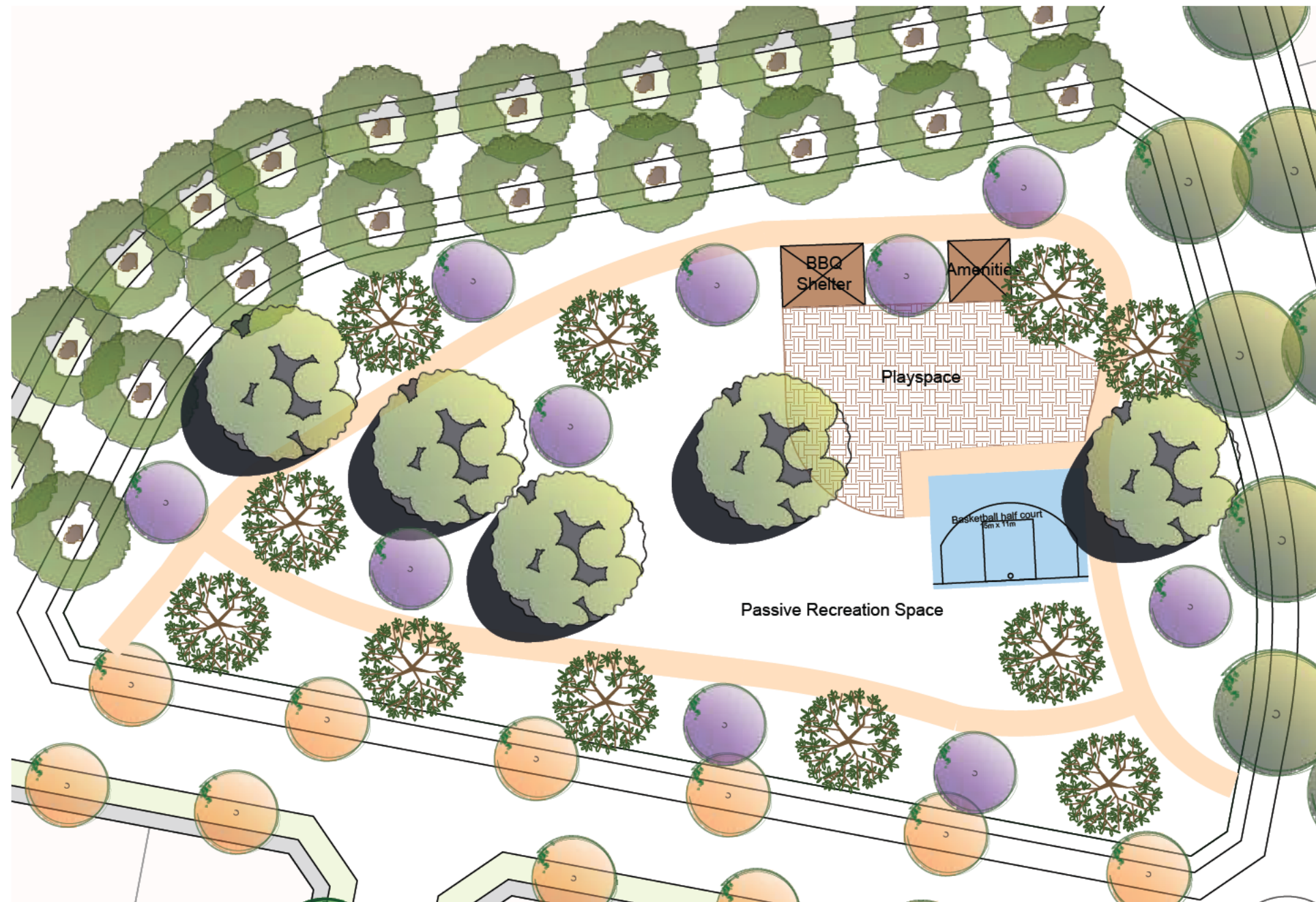
Proposed wetland



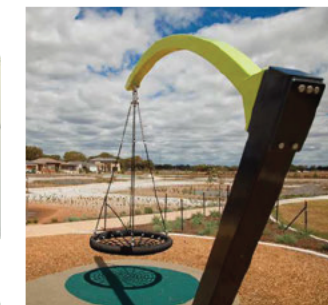
Share paths, canopy trees and open space proposed within Reserve 3

08.

RESERVE 4



Proposed shelter & amenities block



Indicative playground equipment within reserve 4 selected to be accessible to a variety of age groups and physical capabilities, with a focus on engaging teenagers.



Share paths, canopy trees and open space proposed within Reserve 4



Indicative basketball half court.



Indicative park bench with back

09. RESERVE 5



Existing trees within Reserve 5 to be retained and protected



Share paths, canopy trees and open space proposed within Reserve 5



Indicative park bench with back

Noise mitigation measure.
Planting and fencing to be further defined at detail stage.

Plan connects to image on the left

10.

INDICATIVE RESERVE PLANTING PALETTE



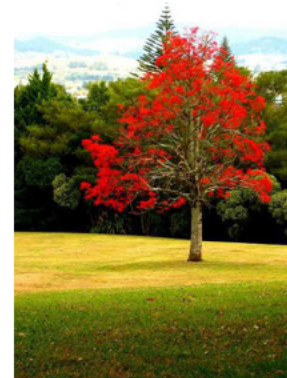
Eucalyptus leucoxylon
20.0 x 15.0



Hymenosporum flavum
10.0 x 8.0



Acacia melanoxylon
20.0 x 12.0



Brachychiton acerifolius
6.0 x 5.0



Eucalyptus scoparia
10.0 x 8.0



Malus spectabilis
4.0 x 3.0



Eucalyptus melliodora
15.0 x 10.0



Quercus palustris
15.0 x 8.0



Cassinia aculeata
4.0 x 2.0



Correa reflexa
2.0 x 2.0



Goodenia ovata
1.5 x 1.5



Banksia spinulosa 'Birthday Candles'
1.0 x 1.0



Westringia fruticosa 'Wynabbie Gem'
1.5 x 1.5



Grevillea 'Robyn Gordon'
1.5 x 1.5



Dodonaea viscosa 'Purpurea'
3.0 x 1.0



Anigozanthos flacidus
1.0 x 1.0



Lomandra longifolia
1.0 x 1.0



Poa labillardieri
0.8 x 1.0



Lomandra longifolia 'Tanika'
0.6 x 0.6



Dianella revoluta
0.8 x 0.8



Myoporum parvifolium 'Garden Armour'
0.2 x 2.0



Chrysocephalum semipapposum
0.5 x 1.0

11.

MAINTENANCE SCHEDULE

ITEM	ASSETS	MAINTENANCE WORKS	MAINTENANCE OUTCOMES	FREQUENCY
Mowing	Naturestrips	Mowing and trimming of all lawn surfaces and edges	Maintain lawn surfaces at a height of 50-100mm	4-6 visits/seasonally
Weed Treatment	Naturestrips	Manual/chemical removal of weed species	Weed free naturestrips	4 visits/seasonally
Plant Replacement	Street trees & garden beds	Removal and like-for-like replacement of poor condition specimens	All stock in healthy condition able to develop good structure	As needed
Tree Care	Street trees	Inspection of trees and maintenance of stakes & ties	Healthy plantings with continuous growth	Monthly
Watering	Trees, garden beds & lawn	Irrigation of planting and lawn	Healthy plantings with continuous growth	Weekly*
Fertilising	Trees, garden beds & lawn	Suitable application of an appropriate fertiliser to lawn and plantings	Healthy plantings with continuous growth	4 visits/seasonally
Litter Management	Naturestrips & reserves	Removal and suitable disposal of all visible litter on the site	Areas outlined to be litter free	Monthly
Mulch coverage	Tree basins and garden beds	Inspect and reinstate mulch as required in tree basins and garden beds	Mulch should be at a settled depth of 80mm to extent of basin or garden bed	4 visits/seasonally

- Litter Management is ongoing and to be undertaken as a component of each site visit
- All tree/plant stock is to be maintained in a healthy condition, and able to develop good structure. Replacement is to be ongoing as required. Damage by vandalism is to be replaced with like-for-like replacement. Any ongoing, repeated vandalism by third parties is to be discussed with the Contract Administrator and Council to provide a viable solution to resolve.
- If required, the landscape areas shall be sprayed against insect and fungus. All spraying shall be carried out in suitable climatic conditions and to the manufacturers written directions and rates.
- * All trees are to be watered to ensure continuous health and growth. The minimum requirements for trees should be 25mm of natural rainfall or its applied equivalent, or a combination of both during weekly periods.
- Maintenance periods are typically undertaken for a 24 month period. All maintenance requirements are to be provided for the duration nominated within the planning permit.