

# Latrobe City Service Directory for Culturally Diverse Communities, including new arrivals

Situated in the centre of Gippsland and the Latrobe Valley, Latrobe City is one of the four Victorian regional cities, the only located in the eastern part of Victoria.

Latrobe City encompass the four major towns of Moe, Morwell, Traralgon and Churchill as well as the outer lying townships of Boolarra, Glengarry, Newborough, Traralgon South, Toongabbie, Tyers, Yallourn North and Yinnar.

As a regional centre, Latrobe City offers you, your family and your business a diverse range of regional living opportunities. We have it all from unbeatable lifestyle options, urban living, rural townships, farming and bush settings, to well-supported commercial and business communities; education and health options, leisure and recreational choices and the chance to live in a connected, diverse community.

Latrobe City has a proud history of welcoming people from diverse backgrounds and cultures into the community. Their arrival has enriched our culture, strengthened our industry, added a diverse range of businesses, and made Latrobe City a more exciting and vibrant place to live. More than 30% of our community has one or both of their parents born overseas.

Since the largely European post-war migration wave, the profile of more recent arrivals to Latrobe City is changing. See our community profile at Appendix One. Many businesses within Latrobe City have international links as a direct result of our diverse and highly skilled workforce. There has also been considerable economic investment by large-scale international industry within the municipality.

Our Sister City relationships with Takasago in Japan and Taizhou in China are key drivers for economic, educational and cultural exchange. Our cultural diversity is also evident in regular annual high-profile cultural celebrations such as our Sister Cities Festival.

Latrobe City is a Refugee Welcome Zone and 21% of residents are born overseas and 6.72% speak a language other than English in their home. The five most common languages other than English spoken at home are Greek, Italian, Malayalam (India), Mandarin, Tagalog (the Philippines).

**English:** To receive this information in languages other than English, or in other formats, please contact Latrobe City Council on 1300 367 700.

**Greek:** Για να λάβετε αυτές τις πληροφορίες σε άλλη γλώσσα εκτός της αγγλικής ή σε άλλες μορφές, επικοινωνήστε με τον Δήμο Latrobe στο 1300 367 700.

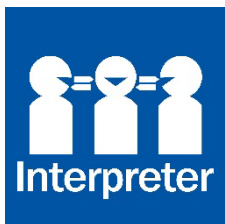
**Italian:** Per ottenere queste informazioni in lingue diverse dall'inglese, o in altri formati si può contattare il Comune di Latrobe al numero 1300 367 700.

**Malayalam:** ഇംഗ്ലീഷ് ഒഴികെയുള്ള ഭാഷകളിലോ മറ്റ് ഫോർമാറ്റുകളിലോ ഈ വിവരങ്ങൾ ലഭിക്കുന്നതിന്, 1300 367 700 എന്ന നമ്പറിൽ ലാട്രോബ് സിറ്റി കൗൺസിലുമായി ബന്ധപ്പെടുക.

**Simplified Chinese:** 如需获取本信息的其他语言版本或其他格式版本，请致电 1300 367 700 联系 Latrobe 市政府。

**Tagalog:** Upang makatanggap ng impormasyon na ito sa ibang wika bukod sa Ingles, o sa ibang format, mangyaring kontakin ang Latrobe City Council sa 1300 367 700.

## Accessible Communication



### Translation and Interpreting Services - TIS National

Phone: 13 14 50

[www.tisnational.gov.au](http://www.tisnational.gov.au)

### Auslan Services

Phone: 1300 287 526

SMS: 0409 143 980

[www.auslanservices.com](http://www.auslanservices.com)

### National Relay Service

People who are deaf, have a hearing impairment or complex communication needs, can access any of the phone numbers listed in this booklet via the NRS.

Telephone: 13 37 77

Website: <https://www.accesshub.gov.au/about-the-nrs>

## Latrobe City Council Services and Facilities

### Corporate Headquarters

141 Commercial Road, Morwell

Phone: 1300 367 700

Email: [latrobe@latrobe.vic.gov.au](mailto:latrobe@latrobe.vic.gov.au)

[www.latrobe.vic.gov.au](http://www.latrobe.vic.gov.au)

### Libraries

#### Churchill Library

9-11 Phillip Parade, Churchill

[www.latrobe.vic.gov.au/library](http://www.latrobe.vic.gov.au/library)

#### Traralgon Library

34-38 Kay Street, Traralgon

[www.latrobe.vic.gov.au/library](http://www.latrobe.vic.gov.au/library)

#### Morwell Library

63-65 Elgin Street, Morwell

[www.latrobe.vic.gov.au/library](http://www.latrobe.vic.gov.au/library)

#### Moe Library

1-29 George Street, Moe

[www.latrobe.vic.gov.au/library](http://www.latrobe.vic.gov.au/library)

### Sporting and Leisure Facilities

#### Latrobe Leisure Moe Newborough

Cnr Old Sale Road and Southwell Avenue,  
Newborough

[www.latrobe.vic.gov.au/leisure](http://www.latrobe.vic.gov.au/leisure)

#### Latrobe Leisure Morwell

McDonald Street, Morwell

[www.latrobe.vic.gov.au/leisure](http://www.latrobe.vic.gov.au/leisure)

#### Gippsland Regional Indoor Sports Stadium

Catterick Crescent, Traralgon

[www.latrobe.vic.gov.au/leisure](http://www.latrobe.vic.gov.au/leisure)

#### Latrobe Leisure Churchill

Cnr Northways Road and McDonald Churchill

[www.latrobe.vic.gov.au/leisure](http://www.latrobe.vic.gov.au/leisure)

#### Gippsland Regional Aquatic Centre, Traralgon

42 Breed Street, Traralgon

[www.grac.ymca.org.au](http://www.grac.ymca.org.au)

#### Latrobe Regional Gallery

138 Commercial Road, Morwell

[www.latroberegionalgallery.com](http://www.latroberegionalgallery.com)

#### Gippsland Performing Arts Centre

32 Kay Street, Traralgon

[www.latrobe.vic.gov.au/gpac/home](http://www.latrobe.vic.gov.au/gpac/home)

#### Latrobe Visitor Information Centre

32 Kay Street, Traralgon

[www.latrobecity.com.au](http://www.latrobecity.com.au)

## Emergency Telephone Numbers

Fire/Police/Ambulance: 000

Victorian State Emergency Services: 13 25 00.

Nurse on Call – Phone: 1300 606 024

Lifeline: 13 11 14

Mental Health Triage (Gippsland): 1300 363 322

Beyond Blue: 1300 224 636

Kids Helpline: 1800 551 800

Victorian Poisons Information Line: 13 11 26

## Ask Izzy

Ask Izzy is a mobile website that connects people who are in crisis with the services they need right now and nearby.

[www.askizzy.org.au](http://www.askizzy.org.au)

## Organisations delivering services specifically for culturally diverse community members

### Gippsland Multicultural Services Inc. (GMS)

26-28 Tarwin Street, Morwell

Phone: 5133 7072

Email: [reception@gms.org.au](mailto:reception@gms.org.au)

[www.gms.org.au](http://www.gms.org.au)

GMS is a community-based organisation, assisting migrants and refugees in Gippsland through the provision of a range of services and programs that support the settlement and ongoing participation of our diverse communities in the Gippsland region.

The GMS philosophy is about:

- Community
- Advocacy, and
- Support.

GMS provides the following services to people from migrant backgrounds:

**Access and Support Service:** The Access and Support service helps people from a migrant background who may have difficulties in finding out about services or applying for the services they need.

**National Disability Insurance Scheme (NDIS):** For NDIS participants who have an approved NDIS plan. GMS offers group/centre activities, assistance with household tasks, assistance with personal activities and assistance with participating in the community.

**Respite Care:** Respite carers can assist with social support, transportation for medical appointments, shopping, local outings, meal preparation and light household duties. Respite carers are also able to provide overnight care if needed.

**Social Support:** Social Support Groups are designed to provide social support to people from culturally and linguistically diverse backgrounds who are over 65 years of age or younger with a disability.

### Gippsland Multicultural Services Diverse Communities Wellness Group

The group meets at GMS in Morwell over lunch and often have a guest speaker talk to the group with the focus on wellness and wellbeing.

Contact: Sueying Turnbull

Phone: 5133 7072

Email: [sueying@gms.org.au](mailto:sueying@gms.org.au)

## Centre for Multicultural Youth (CMY) - Gippsland team

Phone: (03) 93403700

Email: [gippsland@cmv.net.au](mailto:gippsland@cmv.net.au)

[www.cmv.net.au](http://www.cmv.net.au)

Based in Morwell, the Gippsland CMY team promotes and facilitates the meaningful participation of rural and regional young people from refugee and migrant backgrounds in the community, economy, and civic society. The team also aims to build rural and regional youth sector capacity and provide high-quality youth affairs advice to the sector, young people, Government, and the broader community from the perspective of multicultural youth.

CMY Programs:

**Youth Advisory Group (YAG):** Young multicultural people based in Gippsland (ages 16-24) are supported to engage in monthly meetings to strengthen their social connections, build skills, and participate in consultations and decision-making.

**Culture Clubs:** In-school programs that build awareness around multiculturalism and discuss topics of importance to young people. CMY partners with other local experts to deliver accurate and informative sessions that build young people's connection to support and services.

**Double Standards Podcast:** Recorded in Moe library by the members of our CMY Gippsland Youth Advisory Group, the episodes touch upon matters that are important to them and their local area providing a platform for those who are generally overlooked. Look for it on Spotify and subscribe!

**School Holiday Programs:** CMY organises sessions during the school holidays for young people and their families to strengthen connections within their local community.

**Training:** The CMY team offers training to community members, organisations, schools, and sporting clubs on Culturally Responsive Practice and Anti-Racism.

## Gippsland Ethnic Communities Council (GECC)

PO Box 314 Moe

Phone: 5122 6714 (Christine) & 0402 152 160 (Murray)

[www.gippslandethniccommunitiescouncil.websyte.com.au](http://www.gippslandethniccommunitiescouncil.websyte.com.au)

The GECC is a volunteer based non-profit organisation. Our volunteer members represent different ethnic groups in the community. The GECC members are active in a number of projects in the community.

The aim of the GECC is to encourage understanding, develop goodwill and promote harmony within the culturally diverse community.

## Latrobe Community Health Service

### Settlement, Engagement and Transition Support Program (SETS)

81-87 Buckley Street, Morwell

Phone: 1800 242 696

Email: [SETS@lchs.com.au](mailto:SETS@lchs.com.au)

[www.lchs.com.au](http://www.lchs.com.au)

SETS is an early intervention program that equips and empowers eligible clients and communities to address their identified settlement needs to improve:

- Social participation
- Economic wellbeing
- Independence
- Personal wellbeing, and
- Connection to community.

Clients can be provided with:

- Settlement related information
- Advice
- Advocacy
- Assistance to access mainstream and other relevant services
- Low and medium case management
- Employment and education assistance, and
- Adult Migrant English Program class referrals.

Eligibility:

Arrived in Australia less than 5 years ago (the 5-year eligibility is currently under review) and:

- Humanitarian entrants and their dependants
- Family stream migrants with low level of English
- Dependants of skilled migrants
- Selected temporary residents (prospective marriage & provisional partner & their dependants).

### Moe Multicultural Friendship Group

Meets every Friday at 10 am.

Contact: Sandy Mullen

Phone: 1800 242 696

Email: [sandy.mullen@lchs.com.au](mailto:sandy.mullen@lchs.com.au)

## Emergency Relief Providers in Latrobe City

Assistance may be provided in the form of food, accommodation, travel, pharmaceuticals, utilities, clothing, furniture items and household goods.

Visit the Latrobe City webpage for the most up to date electronic or printer friendly version of the Emergency Relief & Support Services Brochure, January 2024.

[www.latrobe.vic.gov.au/Community/Community\\_Groups/Community\\_Programs/Emergency\\_Relief\\_Network\\_of\\_Latrobe\\_City](http://www.latrobe.vic.gov.au/Community/Community_Groups/Community_Programs/Emergency_Relief_Network_of_Latrobe_City)

See brochure in the Appendix.



## **Culturally Diverse Community Groups in Latrobe City**

### **Croatian Association of Gippsland**

Email: [gippslandcroclub@hotmail.com](mailto:gippslandcroclub@hotmail.com)

### **Filipino Community**

Filipino Carer Support Group Gippsland  
Thelma Davies  
PO Box 466, Morwell 3840  
Email: [mathelda1@bigpond.com](mailto:mathelda1@bigpond.com)

### **German Community**

Club Astoria  
Giselle Scorse  
Maryvale Crescent Morwell 3840  
Mobile: 0434 609 074  
Email:  
[Rsc46177@bigpond.net.au](mailto:Rsc46177@bigpond.net.au)

### **Greek Community**

Greek Senior Citizens of Orthodox  
Community of Gippsland  
George Kanellopoulos  
PO Box 576, Morwell 3840  
Phone: 5168 1401 or 0408 378 713  
Email:  
[greekseniorsgipps@gmail.com](mailto:greekseniorsgipps@gmail.com)

Greek Orthodox Community of Gippsland  
Andrew Evripidou  
PO Box 361, Morwell 3840  
Mobile: 0413 017 608  
Email: [gippsgreekorthodox@gmail.com](mailto:gippsgreekorthodox@gmail.com)

### **Indian Community**

Latrobe Indian Association  
Akash Amin Mobile: 0430 649 898  
Kunal Patel Mobile: 0433 467 809  
Email: [info@latrobeindianassociation.org](mailto:info@latrobeindianassociation.org)  
Web: [www.latrobeindianassociation.org](http://www.latrobeindianassociation.org)

### **Indonesian Community**

Gippsland Indonesian Community  
Mrs Lucky Dunn  
Bellarine Circuit Morwell 3840  
Mobile: 0491 133 394  
Email: [Trully11@hotmail.com](mailto:Trully11@hotmail.com)

### **Italian Community**

Italian Australian Coordinating Committee of  
Gippsland Inc.  
Giuliana DiSisto  
Email: [iaccog@outlook.com](mailto:iaccog@outlook.com)

Italian Catholic Federation of Morwell  
Elisa Manzo  
Email: [elisa.manzo1956@gmail.com](mailto:elisa.manzo1956@gmail.com)

Italian Seniors Club  
Anna Fascio  
Venue: 158 Vary Street Morwell 3840  
Phone: 5134 1040

Spinete Social Club Inc.  
Bill Di Iorio,  
6 Durak Place, Traralgon 3844  
Mobile: 0405 762 600  
Email: [scarparello@hotmail.com](mailto:scarparello@hotmail.com)

### **Karen Muslim Community**

Aina Marziah  
Email: [phyukyelo@gmail.com](mailto:phyukyelo@gmail.com)

### **Maltese Community**

Maltese Community Centre Latrobe Valley  
Inc.  
Mario Sammut  
Maryvale Reserve, Corner Henry and Grant  
Street, Morwell 3840  
PO Box 657, Morwell 3840  
Mobile: 0412 411 719 (Mario)  
Mobile: 0481 284 404 (Centre)  
Email: [aloysiusvclv@gmail.com](mailto:aloysiusvclv@gmail.com)

## **Muslim Community**

United Muslim Sisters of Latrobe Valley  
Arfa Khan or Khatija Halabi

Email:

[access.umslvpresident@gmail.com](mailto:access.umslvpresident@gmail.com)

Web: [umslv.com/](http://umslv.com/)

Gippsland Australian Muslim Community Inc

Email: [gamci.2013@gmail.com](mailto:gamci.2013@gmail.com)

## **Nigerian Community**

Nigeria Society of Gippsland

Matthew Adetifa

82 Riverslea Boulevard, Traralgon 3844

Phone: 0421 652 967

Email: [adetifamm@yahoo.com](mailto:adetifamm@yahoo.com)

## **Nepalese Community**

Gippsland Nepalese Community

Laxmi P Magar

57 The Avenue, Morwell 3840

Mobile: 0458 442 228

Email: [laxmiprkmagr@yahoo.com](mailto:laxmiprkmagr@yahoo.com)

## **Polish Community**

Polish Senior Citizens Club

Regina Kukla

C/- 95 Holmes Road, Morwell 3840

Phone: 5134 4109

Email: [Bella15@bigpond.net.au](mailto:Bella15@bigpond.net.au)

## **Groups with diverse cultures**

International Women's Group

Soula Kanellopoulos

PO Box 361, Morwell 3844

Phone: 0413 253 187

Email: [intwomen96@gmail.com](mailto:intwomen96@gmail.com)

Web: [international-womens-group-latrobe.org/](http://international-womens-group-latrobe.org/)

Kinship Sharing Goodness

Malou Ortega

Email: [Malou.ortrga@outlook.com](mailto:Malou.ortrga@outlook.com)

Moe Multicultural Friendship Group

Contact: Sandy Mullen

Phone: 1800 242 696

Email: [sandy.mullen@lchs.com.au](mailto:sandy.mullen@lchs.com.au)

Gippsland Multicultural Services Diverse  
Communities Wellness Group

Phone: 5133 7072

Email: [sueying@gms.org.au](mailto:sueying@gms.org.au)

## **Interpreter Services**

**Translating and Interpreting Services (TIS  
National)**

Phone: 13 14 50

[www.tisnational.gov.au](http://www.tisnational.gov.au)

## **Auslan Services**

Phone: 1300 287 526

SMS: 0409 143 980

[www.auslanservices.com](http://www.auslanservices.com)

## **Government Services**

**Services Australia (Centrelink)**

Elgin Street & Chapel Street, Morwell

Phone: 13 24 68

[www.servicesaustralia.gov.au](http://www.servicesaustralia.gov.au)

## **Medicare**

88 Seymour Street, Traralgon 3844

Phone: 13 20 11

Email: [mes@servicesaustralia.gov.au](mailto:mes@servicesaustralia.gov.au)

## **For help in other languages**

Centrelink, Phone: 13 12 02

Medicare and Child Support, Phone: 13 14 50  
(TIS National)

## **Australian Immunisation Register**

Phone: 1800 653 809

### **Victoria Legal Aid**

4 Chapel Street, Morwell VIC 3840

Phone: 5126 6444

Phone: 1300 792 387

[www.legalaid.vic.gov.au](http://www.legalaid.vic.gov.au)

## **Counselling Services**

### **Latrobe Community Health Service**

Phone: 1800 242 696

### **Beyond Blue**

Phone: 1300 22 4636

### **Kids Helpline**

Phone: 1800 551 800

### **Lifeline**

Phone: 13 11 14

## **Transport**

### **Morwell Taxis**

Phone: 5134 4772

### **Traralgon Taxis**

Phone: 5174 6339

### **Moe Taxis**

Phone: 5127 1633

### **V/Line (Trains)**

For train timetables, live updates, arrivals, and departures.

Phone: 1800 800 007

[www.vline.com.au](http://www.vline.com.au)

### **Latrobe Valley Bus lines**

For timetables.

Phone: 5135 4700

[www.lvbl.com.au](http://www.lvbl.com.au)

### **Myki**

myki is your ticket to travel on:

- Trains, trams, and buses in Regional Victoria and Melbourne.
- V/Line trains between metropolitan Melbourne and Regional Victoria.
- Buses within Geelong, Ballarat, Bendigo, Seymour, and the Latrobe Valley.

Regional customers can buy a pre-loaded myki card at any staffed V/Line Train Station.

Phone: 1800 800 007

[www.ptv.vic.gov.au/tickets/myki](http://www.ptv.vic.gov.au/tickets/myki)

### **Public Transport Victoria - Journey Planner**

Call centre phone: 1800 800 007

[www.ptv.vic.gov.au/journey](http://www.ptv.vic.gov.au/journey)

For a range of public transport information in languages other than English:

[www.ptv.vic.gov.au/footer/customer-service/information-in-other-languages/](http://www.ptv.vic.gov.au/footer/customer-service/information-in-other-languages/)

## **Travel's Aid**

Services are designed to enable travellers with mobility requirements to fully participate in life activities. Travellers Aid Australia operates from four service sites at Southern Cross and Flinders Street Stations in Melbourne and Ballarat and Seymour Railway Stations in regional Victoria.

General Enquiries:

Phone: 9654 2600

9am – 5pm, Monday - Friday

[www.travellersaid.org.au](http://www.travellersaid.org.au)

To book a service visit:

[www.travellersaid.org.au/book-a-service](http://www.travellersaid.org.au/book-a-service)

## Tertiary Education

### **Federation University Australia Gippsland Campus**

Northways Road, Churchill 3842  
Phone: 800 333 864

### **TAFE Gippsland – Traralgon Campus**

49-63 Princes Street, Traralgon 3844  
Phone: 1300 133 717

### **GETT Centre Traralgon**

49-63 Princes Street, Traralgon 3844  
Phone: 5175 9650

### **TAFE Gippsland – Morwell Campus**

Monash Way, Morwell 3840  
Phone: 1300 133 717

### **TAFE Gippsland – Yallourn Campus**

Monash Road, Newborough 3825  
Phone: 1300 133 717

## Primary Schools

### **Morwell Central Primary School**

47 McDonald Street, Morwell 3840  
Phone: 5136 5568

### **Sacred Heart Primary School**

Cnr of Wilson Street and Commercial Road,  
Morwell 3840  
Phone: 5134 3718

### **St Vincent de Paul**

2 Rowell Street, Morwell 3840  
Phone: 5134 2060

### **Morwell Park Primary School**

76 - 82 Vary Street, Morwell 3840  
Phone: 5134 1793

### **Hazelwood North Primary School**

121 Church Road, Hazelwood North 3840  
Phone: 5166 1267

### **Churchill Primary School**

Coleman Parade, Churchill 3842  
Phone: 5122 1343

### **Churchill North Primary School**

Coolabah Drive, Churchill 3842  
Phone: 5122 1976

### **Tyers Primary School**

Main Road, Tyers 3844  
Phone: 5191 8260

### **Lumen Christie Primary School**

35 Williams Avenue, Churchill 3842  
Phone: 5122 2231

### **Yallourn North Primary School**

Reserve Street, Yallourn North 3825  
Phone: 5115 8500

### **Chairo Christian School**

2-10 Lansdowne Road, Traralgon 3844  
Phone: 5173 0500

### **Grey Street Primary School**

30-44 Grey Street, Traralgon 3844  
Phone: 5174 2055

### **Kosciuszko Street Primary School**

36 Kosciuszko Street, Traralgon 3844  
Phone: 5174 2512

### **Liddiard Road Primary School**

148 Liddiard Road, Traralgon 3844  
Phone: 5174 1795

### **Stockdale Road Primary School**

7 Stockdale Road, Traralgon  
Phone: 5174 1607

### **St Michael's Primary School**

Seymour Street, Traralgon  
Phone: 5174 3295

### **St Gabriel's Primary School**

30-50 Rangeview Drive Traralgon  
Phone: 5174 5515

### **St Paul's Grammar School**

46 Cross's Road, Traralgon 3844  
Phone: 5175 0133

## **Secondary Schools**

### **Latrobe Valley Flexible Learning Option (FLO), Morwell**

Phone: 5165 0670

### **Kurnai College**

Bridle Road, Morwell 3840  
Phone: 5165 0600

### **Traralgon Secondary College Senior Campus**

154-184 Grey Street, Traralgon 3844  
Phone: 5176 2240

### **Traralgon Secondary College Junior Campus**

142-146 Liddiard Road, Traralgon 3844  
Phone: 5174 8733

### **St Paul's Grammar School**

46 Cross's Road, Traralgon 3844  
Phone: 5175 0133

### **Chairo Christian School**

2-10 Lansdowne Road, Traralgon 3844  
Phone: 5173 0500

### **Lavalla Catholic College Senior Campus**

33/49 Kosciuszko Street, Traralgon 3844  
Phone: 5174 5272

### **Lavalla Secondary College Junior Campus**

206/204 Grey Street, Traralgon 3844  
Phone: 5174 7355

### **Lavalla Catholic College**

John Field Drive, Newborough 3825  
Phone: 5127 1311

### **Lowanna College**

72/96 Newark Avenue, Newborough  
Phone: 5127 9200

## **Early Learning Centres**

### **Traralgon Early Learning Centre**

4-10 Mapleson Drive, Traralgon  
Phone: 1300 367 700

### **Little Saints Early Learning Traralgon**

94 Park Lane, Traralgon  
Phone: 5172 9855

### **Goodstart Early Learning Traralgon**

151 Grey Street, Traralgon  
Phone: 1800 222 543

### **Goodstart Early Learning Traralgon – Park Lane**

42-44 Park Lane, Traralgon  
Phone: 1800 222 543

### **Goodstart Early Learning Traralgon – Conway Court**

1 Conway Court, Traralgon  
Phone: 1800 222 543

### **Li'l Bearz Early learning Centre and Kindergarten**

33 Francis Street, Traralgon  
Phone: 5176 4688

### **Rising Stars Early Learning Academy**

1/33 Shakespeare St, Traralgon

### **Goodstart Early Learning Morwell**

252 Commercial Road, Morwell  
Phone: 1800 222 543

### **Goodstart Early Learning Morwell central**

47 McDonald Street, Morwell  
Phone: 1800 222 543

### **Carinya Early Learning Centre - Long Day Care**

33-39 Rintoull Street, Morwell  
Phone: 5128 5722

### **Kylie Childminding Centre**

54 Collins Street, Morwell  
Phone: 5134 6177

### **Mid Valley Kinder and Childcare**

31 Bridle Road, Morwell  
Phone: 5135 6522

### **Moe P.L.A.C.E**

Ted Summerton Reserve  
37-39 Vale Street Moe  
Phone: 1300 367 700

### **Bluebird Early Education Moe**

99/101 Albert Street, Moe  
Phone: 1300 692 632

### **Little Saints Early Learning Moe**

Narracan Drive, Newborough  
Phone: 5127 6100

### **Moe Central Childcare and Kindergarten Centre**

20 Bell Street, Moe  
Phone: 5127 7466

### **Federation Children's Centre Churchill**

Phillip Parade, Churchill  
Phone: 5122 6227

## **Neighbourhood Houses**

### **Morwell Neighbourhood Centre**

48-50 Beattie Crescent, Morwell  
Phone: 5134 5488  
Email: [office@morwellnh.org.au](mailto:office@morwellnh.org.au)

### **Traralgon Neighbourhood Learning House**

11-13 Breed Street, Traralgon  
Phone: 5174 6199  
Email: [enquiries@tnlh.org.au](mailto:enquiries@tnlh.org.au)

### **Churchill Neighbourhood Centre**

9-11 Phillip Parade, Churchill  
Phone: 5120 3850  
Email: [manager@churchill.org.au](mailto:manager@churchill.org.au)

### **Moe Neighbourhood House**

1-11 James Street, Moe  
Phone: 5126 3123  
Email: [moemnh@bigpond.com](mailto:moemnh@bigpond.com)

## **Mental Health Support / Health Care**

### **Refugee Health Nurse**

No cost culturally appropriate health services for new arrivals. The nurse can check the patient's health and connect the patient to other services like the doctor, dentist, or counsellor.

Eligibility:

- Refugee or humanitarian entrants
- Live in Gippsland

Phone: Latrobe Community Health Service on 1800 242 696.

### **Maryvale Private Hospital**

286 Maryvale Road, Morwell  
Open 24 hours  
Phone: 5132 1200  
[www.maryvaleph.com.au](http://www.maryvaleph.com.au)

### **Latrobe Regional Hospital**

10 Village Avenue, Traralgon 3844  
Open 24 hours  
Phone: 5173 8000  
[www.lrh.com.au](http://www.lrh.com.au)



### **Priority Primary Care Centre Latrobe**

GP-led care for non-life-threatening conditions, without the need to visit the hospital emergency department. Walk straight into the centre, premade bookings, or referrals. Bookings can also be made online.

42-44 Fowler Street, Moe 3825  
Hours: Open 7 days, from 7.30 am to 11.30 pm  
Phone: 5127 9111  
[www.lchs.com.au/latrobe-ppcc](http://www.lchs.com.au/latrobe-ppcc)

### **Victorian Virtual Emergency Department**

Access care for non-life-threatening emergencies, 24 hours a day, 7 days a week. You will be connected to doctors and nurses via a video call and receive medical advice from the comfort of your home.

You will need a smart phone, tablet or computer with a camera to use this service.

To access the electronic registration form, go to the 'Victorian Virtual Emergency Department' web page [www.vved.org.au](http://www.vved.org.au) and click on 'Are you Sick/Unwell'.

### **Latrobe Community Health Services (Community Health)**

Phone: 1800 242 696  
[www.lchs.com.au](http://www.lchs.com.au)

### **Mental Health Wellbeing Local Latrobe**

Mental health and wellbeing treatment for people aged 26, care and support as a telehealth, outreach, and face to face service. Phone: 1800 571 142  
Hours: 9 am- 7.30 pm Monday – Friday, 12 noon – 7 pm Saturdays, by appointment on Sundays.

Email: [latrobelocalservice@neaminational.org.au](mailto:latrobelocalservice@neaminational.org.au)  
[www.betterhealth.vic.gov.au/mhwlocal](http://www.betterhealth.vic.gov.au/mhwlocal)

### **The WES**

A welcoming and safe space for anybody 16 years and over who may be experiencing distress, in crisis or feeling isolated or overwhelmed.

239 Princes Drive, Morwell  
Hours: 4 pm – 8 pm Tuesdays and Thursdays, 12 noon – 8 pm Friday, 10 am – 6 pm Saturday  
Phone: 0400 770 494  
Email: [thewes@llg.org.au](mailto:thewes@llg.org.au)  
[www.llg.org.au/services/the-wes](http://www.llg.org.au/services/the-wes)

### **Lifeline**

24-hour crisis support line which provides people with support for a range of issues including depression and other mental illnesses, substance abuse, domestic violence and more.  
Phone: 13 11 14

### **Traralgon Medical Centre**

11 Kay Street, Traralgon  
Phone: 5174 5350

### **Hillcrest Family Medicine**

26 Seymour Street, Traralgon  
Phone: 5174 2345

### **Latrobe Medical Centre**

18 Breed Street, Traralgon  
Phone: 5174 0555

### **Breed Street Clinic**

37 Breed Street, Traralgon  
Phone: 5176 1933

### **St Luke's Medical Centre**

2 35/33 Grey Street, Traralgon  
Phone: 5173 6464

### **Flourish Medical Group**

2/12 Deakin Street, Traralgon  
Phone: 5174 6711

**Mercy Medical Centre**

52 Grey Street, Traralgon  
Phone: 6144 7575

**Family Health Traralgon**

27 Hotham Street, Traralgon  
Phone: 4138 8075

**Project Health General Practice**

16/18B Church Street, Traralgon  
Phone: 9828 7515

**Traralgon Polyclinic**

63 Argyle Street, Traralgon  
Phone: 4109 1609

**Essentially You Healthcare (acupuncture clinic)**

4/37 Grey Street, Traralgon  
Phone: 5174 3290

**Midvalley Medical Centre**

Located in Mid Valley Shopping Centre  
Shop 59 Mid Valley Drive, Morwell  
Phone: 5134 3888

**The Healthcare Centre**

185a/189 Princes Drive, Morwell  
Phone: 5133 9966

**Latrobe Valley Medical and Acupuncture Clinic**

7 Hopetoun Avenue, Morwell  
Phone: 5134 4333

**Royal Medical Centre**

9A Hopetoun Avenue, Morwell  
Phone: 5133 7999

**Gippsland Chinese Medical Centre**

201 Princes Drive, Morwell  
Phone: 5133 6558

**Maryvale Health Care Centre**

266 Maryvale Road, Morwell

**Hollie Drive Medical Centre**

5 Hollie Drive, Morwell  
Phone: 5135 3555

**United Medical Centre**

5-7 Lloyd Street, Moe  
Phone: 5127 3333

**Tanjil Place Medical Centre**

46-48 Albert Street, Moe  
Phone: 5126 1344

**Central Gippsland Family Practice**

28 George Street, Moe  
Phone: 5127 9800

**Moe Newborough Health**

41 Monash Road, Newborough  
Phone: 5127 2700

**Rutherglen Medical Centre**

27 Rutherglen Road, Newborough  
Phone: 0411 411 856

**Hazelwood Health Centre**

9a Georgina Place, Churchill  
Phone: 5122 2555

**Churchill Family Practice**

10 West Place, Churchill  
Phone: 5122 0555

**Employment Services**

**Providers – Jobseekers must approach Centrelink for a referral to Employment Service Providers.**

**Sureway Employment and Training Traralgon**

Shop 2/74 Seymour Street, Traralgon  
Phone: 1300 787 392



**APM Employment Services – Traralgon**

Shop 2/35 Church Street, Traralgon  
Phone: 5174 3316

14B Seymour Street, Traralgon  
Phone: 5174 5511

**MAX Employment Traralgon**

24 Breed Street, Traralgon  
Phone: 1800 603 503

**atWork Australia Traralgon**

Located in Traralgon Business Centre  
Suite 1/55 Grey Street, Traralgon  
Phone: 1300 080 856

**Workways Traralgon**

13B Church Street, Traralgon  
Phone: 1800 631 196

**DFP Recruitment - Gippsland**

45 Grey Street, Traralgon VIC 3844  
Phone: 5176 3140

**Programmed Skilled Workforce**

Suite 3/10-12 Grey Street, Traralgon  
Phone: 5173 4000

**Workforce Extensions**

Located in: Traralgon Business Centre  
1/55-59 Grey Street, Traralgon  
Phone: 5176 1888

**GBS Recruitment**

7 Post Office Place, Traralgon  
Phone: 5174 2665

**The Salvation Army Employment Plus**

Suite 1, Level 1, 6/8 Grey Street, Traralgon  
Phone: 13 61 23

**Employment Innovations Victoria**

5/24 Breed Street, Traralgon  
Phone: 5176 0625

**Jobfind Traralgon**

24 Breed Street, Traralgon  
Phone: 1800 113 233

**The Personnel Group**

51 Hotham Street, Traralgon  
Phone: 1300 874 000

**GETT Centre**

Located in TAFE Gippsland  
49-63 Princes Street, Traralgon  
Phone: 5175 9650

**MEGT Traralgon**

Unit 4/41 Breed Street, Traralgon  
Phone: 5192 5255

**Sureway Employment and Training  
Morwell**

215 Princes Drive, Morwell  
Phone: 1300 787 392

**atWork Australia Morwell**

116 Buckley Street, Morwell  
Phone: 1300 080 856

**MAX Morwell**

Shop 15/186 Commercial Road, Morwell  
Phone: 1800 603 503

**APM Employment Services**

75-77 George Street, Morwell  
Phone: 5135 3648

**Workways Morwell**

66A George Street, Morwell  
Phone: 1800 631 196

**WISE Employment Morwell**

71B George Street, Morwell  
Phone: 9322 9720

**Maxima Joblink**

29 Tarwin Street, Morwell  
Phone: 1300 629 462

### **Jobfind Morwell**

27 Tarwin Street, Morwell  
Phone: 1800 113 233

### **Gippsland Employment Skills Training (GEST)**

1 Hoyle Street, Morwell  
Phone: 5127 4544

### **Employment Plus**

184 Commercial Road, Morwell  
Phone: 13 61 23

### **Employment Innovations Victoria**

26 Tarwin Street, Morwell  
Phone: 5134 5890

### **IntoJobs Morwell**

80 Firmans Lane, Morwell  
Phone: 1300 115 627

### **atWork Australia Moe**

7 Haigh Street, Moe  
Phone: 1300 080 856

### **MAX Employment Moe**

40 George Street, Moe  
Phone: 1800 603 503

### **Sureway Employment and Training Moe**

24 George Street, Moe  
Phone: 1300 787 392

### **Workways Moe**

7B Moore Street, Moe  
Phone: 1800 631 196

### **The Salvation Army Employment Plus**

3A Moore Street, Moe  
Phone: 13 61 23

## **Places of Worship**

### **Gippsland Christian Church**

Level 1 (Via Shaw's Arcade),  
36 George Street, Moe  
Phone: 5126 1647

### **Now Church Moe**

42 Langford Street, Moe  
Phone: 0466 217 555

### **Moe Baptist Church**

62 Fowler Street, Moe  
Phone: 5126 2182

### **Saint Kieran's Catholic Church**

2/4 Wirraway Street, Moe  
Phone: 5127 1057

### **New Life Christian Centre**

71 Fowler Street, Moe  
Phone: 5126 1569

### **The Church of Jesus Christ of Latter-day Saints**

8 Ollerton Avenue, Moe  
Phone: 0420 307 950

### **St Andrew's Presbyterian Church**

34 Fowler Street, Moe  
Phone: 5127 1296

### **St Luke's Anglican Church**

47A South Street, Moe  
Phone: 5127 5206

### **Moe Baptist Church**

62 Fowler Street, Moe  
Phone: 51 26 2182

### **Moe Seventh-day Adventist Church**

102/106 Service Road, Moe  
Phone: 0423 856 485

**The Redeemed Christian Church of God**

6 Gorge Street, Moe  
Phone: 5127 3098

**Calvary Baptist Church**

1 Fowler Street, Moe  
Phone: 4120 0823

**The Salvation Army Moe Corps**

79 Dinwoodie Drive, Moe  
Phone: 5126 1391

**Newborough Uniting Church**

92 Chamberlain Road, Newborough

**Kingdom Hall of Jehovah's Witness**

430 Moe-Walhalla Road, Tanjil South

**Light of Hidayah Mosque**

6 Victor Street, Morwell  
Phone: 0425 868 397

**Eternity Church (Acts Global)**

69 Princes Drive, Morwell  
Phone: 5133 9595

**Morwell Family Church**

81 Princes Drive, Morwell  
Phone: 5133 0131

**Morwell Family Church**

81 Princes Drive, Morwell  
Phone: 5133 0131

**Greek Orthodox Parish & Community of  
the Dormition of Our Lady**

42-44 Elgin Street, Morwell  
Phone: 5134 3986

**Morwell Presbyterian Church**

50 Church Street, Morwell  
Phone: 5134 4960

**Enjoy Church Gippsland**

144 Maryvale Road, Morwell  
Phone: 5133 7068

**Sacred Heart Catholic Church**

262 Commercial Road, Morwell  
Phone: 5134 2849

**Revival Centres Church**

5 Laburnum Street, Morwell  
Phone: 5134 3220

**Church of Nazarene**

8 Latrobe Road, Morwell  
Phone: 5134 6816

**St Luke's Uniting Church**

281 Princes Drive, Morwell

**Christian Community Church Morwell**

5-7 McDonald Street, Morwell  
Phone: 0438 892 907

**The Salvation Army Morwell Corps**

57 Bridle Road, Morwell  
Phone: 5133 9890

**St Mary's Anglican Church**

6/8 Latrobe Road, Morwell  
Phone: 4109 1423

**Latrobe Valley Spiritualist Centre**

2 Avondale Road Morwell  
Phone: 0419 649 153

**Enjoy Church Gippsland**

144 Maryvale Road, Morwell  
Phone: 5133 7068

**Yallourn North Masjid**

11 Baillie Street, Yallourn North

**Serbian Orthodox Church**

North Road, Yallourn North  
Phone: 0407 838 663

**Good Shepherd Lutheran Church  
Traralgon**

249 Kay Street, Traralgon  
Phone: 5174 0016

**Saint James Anglican Church**

100 Grey Street, Traralgon  
Phone: 5174 2045

**Traralgon City Church**

30-44 Grey Street, Traralgon  
Phone: 0492 977 847

**St Michael's Catholic Church**

33-35 Kay Street, Traralgon  
Phone: 5174 2060

**Traralgon Seventh-day Adventist Church**

50 Stuart Street, Traralgon  
Phone: 0423 856 485

**The Church of Jesus Christ of Latter-day  
Saints**

Kosciuszko Street, Traralgon  
Phone: 0404 441 701

**Traralgon Uniting Church**

1 Park Lane, Traralgon  
Phone: 5176 1029

**Traralgon and District Baptist Church**

60 Kay Street, Traralgon  
Phone: 5176 4421

**Reality Church Traralgon**

35 Lamach Road, Traralgon  
Phone: 0499 354 733

**Valley Church**

119 Hammersmith Circuit, Traralgon  
Phone: 0491 022 382

**Kingdom Hall of Jehovah's Witnesses**

3 Smith Street, Traralgon

**St Stephen's Anglican Church**

Cats Drive & Keith Morgan Drive, Traralgon  
South

**Iglesia Ni Cristo, Gippsland**

168/161 Franklin Street, Traralgon  
Phone: 0419 908 711

**The Salvation Army Traralgon Corps**

36/44 Cross's Road, Traralgon  
Phone: 5174 0812

**Friday Prayer (Jumu'ah)**

Traralgon  
Phone: 0427 745 691

**Real Estate Agents**

**Stockdale & Leggo Morwell**

214 Commercial Road, Morwell  
Phone: 5133 9122

**First National Real Estate**

196/198 Commercial Road, Morwell  
Phone: 5133 7777

**Rennie Property Sales**

219 Commercial Road, Morwell  
Phone: 5133 7900

**Ross Maddaluno Real Estate**

37D Tarwin Street, Morwell  
Phone: 5135 3336

**BJ Bennett & Co Real Estate**

20 Tarwin Street, Morwell  
Phone: 5134 2790

**Mandy Peck Property Management**

Phone: 4137 8893

**Keith Williams Real Estate Traralgon**

37-39 Franklin Street, Traralgon  
Phone: 5174 7777

**First National Real Estate Traralgon**

19 Church Street, Traralgon  
Phone: 5176 0096

**Wilson Property**

Ground Floor, 62 Church Street, Traralgon  
Phone: 5176 2055

**Stockdale & Leggo Traralgon**

21-25 Franklin Street, Traralgon  
Phone: 5174 1833

**Addison Real Estate**

61 Hotham Street, Traralgon  
Phone: 5174 7111

**Latrobe Valley Real Estate**

57 Hotham Street, Traralgon  
Phone: 5176 5544

**Ray White Traralgon**

58 Seymour Street, Traralgon  
Phone: 5175 8888

**One Agency Latrobe Valley**

14C Hotham Street, Traralgon  
Phone: 5174 2740

**Kerrie Ford Property**

Phone: 0436 179 179

**John Kerr & Associates**

Corner Moore Street &, George Street, Moe  
Phone: 5127 7133

**Harcourts Moe-Newborough**

1B Moore Street, Moe  
Phone: 5127 2444

**Danny Edebohls Property Sales**

62 Albert Street, Moe  
Phone: 0467 272 000

**Strzelecki Realty**

3 Market Street, Moe  
Phone: 5127 1333

**The Property Group**

24 George Street, Moe  
Phone: 5127 7535

**Supermarkets/Speciality  
Retailers**

**Coles Morwell**

82 George Street, Morwell

**Woolworths Morwell**

Mid Valley Shopping Centre,  
Midvalley Drive, Morwell

**Foodworks Morwell**

61 Bridle Road, Morwell

**ALDI Morwell**

Mid Valley Shopping Centre,  
Shop 94/72-82 Princes Drive, Morwell

**Manny's Market Morwell**

168 Commercial Road, Morwell

**IGA Morwell**

61 Bridle Road, Morwell

**NQR**

46 George Street, Morwell

**Paraluman Trading Victoria (Asian Grocer)**

109-113 George Street, Morwell

**Mavros Deli (Continental Deli)**

20-22 Church Street, Morwell

**Ai's Café (Predominantly Asian)**

87-91 George Street, Morwell

**Noha Multicultural Grocery Store**

16 Tarwin Street, Morwell

**Foodworks Traralgon**

63 Henry Street, Traralgon

13/15 Hyland Street, Traralgon

**Woolworths Traralgon**

Seymour Street, Traralgon

**Westend Supermarket**

211 Grey Street, Traralgon

**Coles Traralgon**

Traralgon Centre Plaza

Franklin Street, Traralgon

**Manny's Market Traralgon**

39 Post Office Place, Traralgon

**ALDI Traralgon**

141-143 Argyle Street, Traralgon

**Traralgon Asian Groceries (most major Asian cuisines)**

2 Seymour Street, Traralgon

**Bigbazar Spiceworld Traralgon (predominantly Indian, Pakistani & Sri Lankan)**

3/27 Princes Street, Traralgon

**Lazizz Lebanese Bakery (Lebanese)**

20 Church Street, Traralgon

**Woolworths Churchill**

Monash Way & Marina Drive, Churchill

**Woolworths Moe**

Cnr George & Anzac Street, Moe

**Coles Moe**

92 Albert Street, Moe

**ALDI Moe**

10/12 Saviges Road, Moe

**IGA Moe**

Unit 41/45 Elizabeth Street, Moe

**My Local on High**

50 High Street, Moe

**Foodworks Newborough**

25 Boolarra Avenue, Newborough

**Foodworks Yallourn North**

42 North Road, Yallourn North

**Halal Food Outlets**

**Kebab N More**

80 Albert Street, Moe

**Noodle Paradise**

210 Commercial Road, Morwell

**Reef Bakery**

240 Commercial Road, Morwell

**Gippsland Pure Premium Beef Outlet**

71 Giles Road, Traralgon

**Food Outlets with some Halal Foods**

**Zaab Zaab Thai Cuisine**

98 Hotham Street, Traralgon

**Sari Restaurant**

29-31 Church Street, Traralgon

**Malaio's Restaurant**

120 Franklin Street, Traralgon

**Moe Fresh Poultry**

66 Albert Street, Moe

**Coles Supermarkets** have a selection of Halal foods & both **Coles & Woolworths** locally have an “international” aisle featuring different cuisines

## **Pie Face**

## **Appendix**

1. Emergency Relief & Support Services Brochure, January 2024.
2. Library resources in other languages.



# Emergency Relief and Support Services

JANUARY 2024





# Emergency Relief Services

## What is Emergency Relief?

Material or financial aid provided to assist someone to deal with their immediate needs while experiencing financial crisis or personal hardship.

## Who is eligible?

Latrobe City residents experiencing personal hardship.

Please note some services restrict their assistance to people with a Health Care Card and who live within a certain town/postcode. Due to demand and resource availability, the number of times a person can receive assistance may also be limited.

## How to receive assistance?

- Make direct contact with a Relief Service by telephoning or visiting their service location.
- Be referred for assistance by someone you work with or a health professional.

## Types of Assistance



Food



Pharmacy assistance



Vouchers/financial assistance



Soup kitchen/meals



Household goods



Clothing



Shower/bathroom facilities

## CHURCHILL

### Churchill Hub

9-11 Philip Parade, Churchill

**1300 367 700** or

### Churchill Neighbourhood Centre

**5120 3850**

Tuesdays and Thursdays

10am to 12noon

Appointment only.



### St Vincent De Paul Society

Home visits only  
by appointment.

**5122 3979**

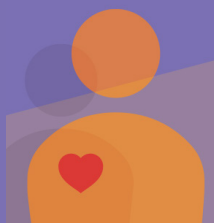
Tuesday, Wednesday  
and Friday

Leave a voicemail, contact  
will be made within  
48-hours.



<https://askizzy.org.au>

Ask Izzy is a mobile website that connects people in need with support services including housing, a meal, money help, counselling and more.



## MORWELL

### Fossick & Find

72 George Street, Morwell

**4120 0840**

Monday to Thursday,  
10am to 3pm

Friday 10am to 2.45pm

Referral required by a Client  
Support Service.



### Morwell Library

63-65 Elgin Street, Morwell

**5128 6131**

Monday to Friday,  
8.30am to 5.15pm

Saturday, 9am to 12noon

Some supplies may be  
available (towel and  
toiletries).



### Morwell

### Neighbourhood House

48-50 Beattie Crescent,  
Morwell

**5134 5488**

Tuesday and Thursday,  
9.30am to 3pm

No appointment required.



### "Re.Store" Enjoy Church

144-148 Maryvale Road,  
Morwell

**0400 244 102**

Friday, 10am to 12.30pm

Closed public holidays and  
Christmas school holidays  
unless an emergency.



### Salvation Army

57 Bridle Road, Morwell

**5126 7100**

Monday, Wednesday and  
Friday, 10am to 2pm

Appointments taken on  
the day. Please call 9am  
onwards. Caseworker also  
available on 0436 125 384.



### St Vincent De Paul Society

**5133 8226**

Monday, Wednesday and  
Friday, 9am to 11am

Leave a voicemail, for  
a return call. Foodbank  
accessed through Morwell  
Neighbourhood House.



### The Gathering Place

99 Buckley Street, Morwell

**4109 1428**

Monday to Friday,  
10am to 3pm

Foodbank can be accessed.  
Wednesday and Friday,  
10.30am to 1.30pm



### Heart Focus Community Care

46 Buckley Street, Morwell

**0421 841 250**

Monday, 10am to 1pm

Tuesday, 10am to 1pm

Thursday, 10am to 1pm  
and 3.30pm to 5.30pm

Donation and Health Care  
Card required.



### Uniting Vic Tas

25-27 Rintoull Street,  
Morwell

**9051 7000**

Monday to Friday,  
9.30am to 2.30pm

No appointment required.  
Health Care Card advisable.



## MOE

### Moe Neighbourhood House

1-11 James St, Moe

**5126 3123**

Monday to Friday  
9am to 3.30pm



### GCC Community Care

Level 1, 36 George Street, Moe  
(Shaw's Arcade, via lift)

**5126 1647** or **0447 393 198**

Wednesday and Thursday  
10am to 2pm  
Support provided for people  
living in 3825 postcode  
area only. Closed school  
and public holidays.



winter only

### St Vincent De Paul Society

**5127 3696**

Monday, Wednesday  
and Friday  
Please call between  
10am to 12noon to make  
an appointment.



### TRCCG Abundant Life Parish, Moe

(Sunrise Foundation  
International)  
6 George Street, Moe

**5164 1017** or **0438 376 283**

Thursday, 5.30pm to 6.30pm  
Extended operating hours  
on school holidays.



## TRARALGON

### Tabitha's Closet Van - Free Clothing Initiative

The Tabitha Van services  
6 sites across Gippsland.  
Locations and times can  
be found at  
[mytcc.com.au/tabitha/](http://mytcc.com.au/tabitha/) or  
by phoning **0429 977 847**



### Mick's Kitchen

(St Michael's Parish)  
43 Kay Street, Traralgon

**5174 2060**

Thursday, 6pm to 7pm.



### St Vincent De Paul Society Assistance Centre

43 Kay Street, Traralgon

**5174 2278**

Monday, Wednesday and  
Friday, 10.30am to 1.30pm  
Support for people living  
in Traralgon area only.  
Home visits by appointment  
as needed. Closed public  
holidays and Christmas  
period.



### Heart Focus Community Care

7 Short Street, Traralgon

**0421 841 250**

Tuesday, 10am to 1pm  
Donation and Health Care  
Card required.





## **Gippsland Regional Aquatic Centre (GRAC)**

49 Breed Street, Traralgon

**1300 444 722**

Normal operating hours

Monday to Friday, 6am to 9pm

Saturday and Sunday, 8am to 6pm

## **Latrobe Leisure Morwell**

45 McDonald Street, Morwell

**5128 6144**

Monday to Thursday, 6am to 9pm

Friday, 6am to 8pm

Saturday and Sunday, 9am to 4pm

## **Gippsland Regional Indoor Sports Stadium**

Catterick Crescent, Traralgon

**5176 3000**

(Operating hours vary)

## **Latrobe Leisure Moe Newborough**

Cnr Old Sale Road and Southwell Avenue,  
Newborough

**5135 8580**

Monday to Thursday, 6am to 9pm

Friday, 6am to 8pm

Saturday and Sunday, 9am-4pm

## **Latrobe Leisure Churchill**

Cnr Northways Road and McDonald Way,  
Churchill

**5120 3888**

Monday to Thursday, 6am to 9pm

Friday, 6am to 7.30pm

Saturday, 9am to 4pm

Sunday, 10am to 3pm

# Ombudsman

If problems with an energy provider or telephone continue after speaking with the company you can speak with an Ombudsman. Problems could be related to billing, payment, disconnection, debt or connection. Financial counselling can also support complaints to the Ombudsman.

## **Energy and Water 1800 500 509**

Energy and Water Ombudsman Victoria (EWOV) is a not-for-profit, independent and impartial dispute resolution service.

They provide Victorian energy and water customers with free, accessible, informal and fast dispute resolution.

## **Telecommunications**

**1800 062 058**

The Telecommunications Ombudsman provides a fair, independent and accessible external dispute resolution service for residential consumers and small businesses who have an unresolved complaint about their telephone or internet service.

Emergency Relief in Latrobe would not be possible without the dedicated work of volunteers and community donations. We ask that recipients are respectful of volunteers and staff at all times.

*To receive this information in languages other than English, or in other formats, please contact Latrobe City Council on 1300 367 700.*



*Call TIS National for  
Translating and Interpreting  
Service on 13 14 50.*

# Client Support Services

---

## **ABORIGINAL AND TORRES STRAIT ISLANDER**

### **Ramahyuck District Aboriginal Corporation Morwell**

**Services:** GP providing primary healthcare and a range of allied health services, including koorie maternity service, diabetes high risk foot clinic, mental health clinician and chronic disease program. Community support including alcohol and drugs support, social and emotional wellbeing support and youth support.

Wanjana Lidj Family services providing extensive family support and Gunai Lidj Childrens Early Learning Centre.

15-17 Collins Street (Cnr Buckley and Collins Streets), Morwell  
5136 5100  
receptionmorwell@ramahyuck.org  
Monday to Friday, 9am to 5pm

---

## **MEDICAL**

### **Head to Health**

**Services:** Head to Health is a free mental health and wellbeing referral service for anyone who needs support.

1800 595 212  
<https://headtohealthvic.org.au/head-to-help/>

Monday to Friday, 8.30am to 5pm (except public holidays)

### **Latrobe Community Health Service (LCHS)**

**Services:** GP clinic, nursing services and dental services.

Sites located across Latrobe  
1800 242 696

### **Latrobe Priority Primary Care Centre**

**Services:** A walk-in service, no appointments are necessary and patients will be seen in order of priority.

42-44 Fowler Street, Moe  
5127 9111  
Monday to Sunday, 7.30am to 11.30pm

### **Supercare Pharmacy Chemist Warehouse Traralgon**

**Services:** Extended hours for medicines, first aid equipment and non-emergency health advice or treatment. Free nursing service available 6pm-10pm for minor injuries and illnesses. No appointment or Medicare card required.

92 Franklin Street, Traralgon  
5174 2003  
Monday to Sunday, 7am to 11pm

### **Phone and Online services for non-urgent health advice**

These services have trained health professionals who can provide immediate, expert health advice 24 hours a day, 7 days a week. These services are free and confidential.

Victorian Virtual Emergency Department:  
[www.ved.org.au](http://www.ved.org.au)

Healthdirect after-hours help line:  
1800 022 222

Nurse On Call: 1300 60 60 24

Healthdirect: [www.healthdirect.gov.au](http://www.healthdirect.gov.au)

Doctors On Demand:  
[www.doctorsondemand.com.au](http://www.doctorsondemand.com.au)

Maternal & Child Health Line: 13 22 29

Maternal & Child Health (MCH) App:  
Available from the Apple Store or Google Play.

---

## CRISIS

### Lifeline

**Services:** Call 13 11 14 Crisis Support service available 24/7. Free, and anonymous. Online Chat at [www.lifeline.org.au](http://www.lifeline.org.au)  
Crisis support service available 24/7.  
Text: 0477 13 11 14 Crisis Support service available 24/7.

### The Orange Door

**Services:** Help and support for women, children and families experiencing issues with family violence. Self-referral to family services and Child First referral pathway and intake.

163 Princes Drive, Morwell  
1800 319 354  
[iga@orangedoor.vic.gov.au](mailto:iga@orangedoor.vic.gov.au)  
Monday to Friday, 9am to 5pm

---

## LEGAL

### Consumer Affairs Victoria

**Services:** Consumer and tenancy advice.  
25 Ann Street, Morwell  
1300 55 81 81  
[www.consumer.vic.gov.au](http://www.consumer.vic.gov.au)  
Monday to Friday, 9am to 5pm

### Victoria Legal Aid

**Services:** Legal assistance for criminal and family law, child protection, family violence, tenancy, guardianship and administration, fines, Centrelink debt, victims of crime and mental health. Legal Help telephone line for free information and advice: 1300 792 387

4 Chapel Street, Morwell  
5126 6444 (appointment only)  
[www.legalaid.vic.gov.au](http://www.legalaid.vic.gov.au)  
Monday to Friday, 8.45am to 5.15pm

---

## HOUSING

### Community Housing Ltd

**Services:** Housing information, advocacy and referral, assessments for financial assistance, applications for public and private rental assistance.

12-14 Church Street, Morwell  
5120 4800  
[www.chl.org.au](http://www.chl.org.au)  
Monday to Friday, 9am to 5pm

---

## FINANCIAL COUNSELLING

### National Debt Helpline

**Services:** Free financial counselling that is independent and confidential.  
1800 007 007

### Anglicare

**Services:** Free financial counselling and budgeting.

190 Commercial Road, Morwell  
1800 809 722  
[www.anglicarevic.org.au](http://www.anglicarevic.org.au)  
Monday to Friday, 9am to 5pm

---

## GENERAL

### Anglicare Victoria

**Services:** Adoption, foster care, family services, Parentzone, Children's Contact Centre, youth justice group conferencing, Koorie youth justice.

190 Commercial Road, Morwell  
5135 9555  
[www.anglicarevic.org.au](http://www.anglicarevic.org.au)  
Monday to Friday, 9am to 5pm

## **Gippsland Community Legal Service**

**Services:** A free and confidential legal service, a program of Anglicare Victoria.

190 Commercial Road, Morwell  
1800 004 402

[www.gcls.org.au](http://www.gcls.org.au)

Monday to Friday, 9am to 5pm

## **Good Money**

**Services:** No interest loans, loans for emergency relief for whitegoods, household items, dental, medical, car repairs and registration.

10 Tarwin Street, Morwell  
1300 770 550

Monday to Friday, 9.30am to 3pm

## **Latrobe Community Health Service (LCHS)**

**Services:** Alcohol and other drug treatment services, NDIS, allied health, aged care assessment services, carer programs, counselling, volunteers, gamblers help, and refugee and settlement support.

Sites located across Latrobe.

1800 242 696

[www.lchs.com.au](http://www.lchs.com.au)

## **Latrobe Mental Health and Wellbeing Local**

**Services:** Mental health and wellbeing supports for 26+ years for those living within Latrobe and experiencing mild to moderate mental health concerns.

All support is free and you don't need a Medicare card or referral from your doctor.

23 Hazelwood Road, Morwell  
1800 571 142

Monday to Friday, 9.30am to 7.30pm

Saturday and Public Holidays,

12.30pm to 7.30pm

## **Quantum Support Services**

**Services:** Support for those in the community experiencing or at risk of homelessness and family violence. Including family services support for children, youth and their parents/ caregivers.

25-27 Rintoull Street, Morwell  
9051 7000

Monday to Friday, 9am to 5pm

## **Services Australia (Centrelink)**

**Services:** Government payments and social workers.

Cnr Chapel and Elgin Street, Morwell  
132 850

[servicesaustralia.gov.au](http://servicesaustralia.gov.au)

Monday to Friday, 8.30am to 4.30pm

## **Uniting Vic Tas**

**Services:** Home and Community Care Services for young people (under the age of 65 years and their carers) and Bushlink Program delivering outreach support to families with children under the age of 5 years.

25-27 Rintoull Street, Morwell  
9051 7000

Monday to Friday, 9.30am to 2.30pm

## **The WES**

**Services:** Free wellbeing and emotional support for people feeling lonely or overwhelmed. No appointment or referral necessary. Call in for a chat or a quiet break.

239 Princes Drive, Morwell  
0400 770 494

[www.thewes.org.au](http://www.thewes.org.au)

Thursday and Friday, 12noon to 8pm

Saturday, 10am to 6pm



# LOOKING FOR RESOURCES IN DIFFERENT LANGUAGES?

Use your Library Card to connect  
through culture to the world.

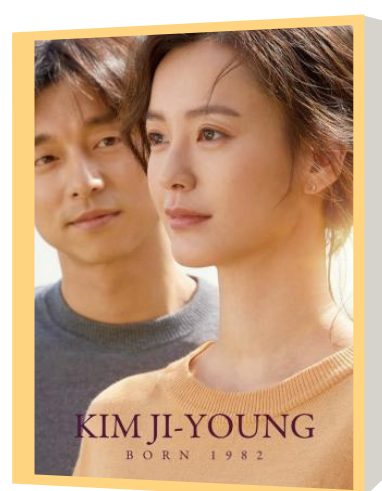


hallo | أهلا | guten tag | 你好 | χαιρετισμός | bongu | 안녕하세요 | haye | talofa  
ආයුබෝවන් | bonjour | こんにちは | ciao | ਸਤ ਸ੍ਰੀ ਅਕਾਲ | merhaba



## Research & Learning

- Language skills
- Cultural studies and diversity training
- World literature, history and food



## Reading and Watching

- Newspapers and magazines from over 100 different countries in over 60 different languages.
- Movies, television and documentaries in languages other than English

### Visit A Branch



- Sign up in person
- Ask a librarian for help with library resources
- We can organise an interpreter in a range of languages

For more information visit  
[www.latrobe.vic.gov.au/library](http://www.latrobe.vic.gov.au/library)