

LatrobeCity

# Public Toilet Plan

2023 – 2033





*Latrobe City Council acknowledges  
that it operates on the traditional land  
of the Brayakaulung people of the  
Gunaikurnai nation and pays respect  
to their Elders past and present.*





## Our Community Vision

In 2031 Latrobe City will be known for being **smart, creative, healthy, sustainable and connected**. It will be the most liveable regional city and at the forefront of innovation.

Working together we are a diverse, connected and resilient community, supporting the equitable diversification of our economic base and transition towards a low emissions future.

We are known as a community that is equitable, liveable and sustainable, with a continued focus on healthy lifestyles supported by high quality recreational and cultural facilities and a natural environment that is nurtured and respected.

---

### Table of Contents

Introduction	01
Glossary	03
Existing Facilities	04
Current and Future Needs	05
Implementation Plan	07
Attachments	08
List of Public Toilets (as at January 2023)	09
Supplementary List	19
Town Maps	20
10 Year Implementation Plan	32
Associated Contracts - Recommendations	40
Public Toilet Design Examples	41



Apex Park, Moe

## Introduction

The objective of the Latrobe City Council Public Toilet Plan is to provide equitable, safe, accessible, well maintained and sustainable public toilet infrastructure throughout the municipality to support community participation and social inclusion.

Key principles in delivering this plan are:

1. PUBLIC HEALTH AND HYGIENE
2. THE NEED FOR SAFETY AND PRIVACY
3. ACCESSIBILITY AND INCLUSION
4. EASE OF MAINTENANCE
5. SUSTAINABILITY
6. CLEAR COMMUNICATION AROUND AVAILABILITY





## Purpose

The Public Toilet Plan will guide Council to:

1. Improve existing facilities
2. Provide appropriate facilities in high use public areas such as town activity centres, regional level parks / reserves / playgrounds and along popular walking paths and major highway routes
3. Maintain a high standard of sustainable Public Toilet infrastructure in line with the key principles.
4. Ensure information regarding Public Toilet facilities is current, readily available and accessible

## Strategic Alignment

- Council Plan 2021-2025
- Asset Plan 2022-2032
- Living Well Latrobe, Our Community's Municipal Public Health and Wellbeing Plan 2022-25
- Public Open Space Strategy
- Play Space Strategy
- Latrobe City Council Disability Access and Inclusion Plan 2022-2025
- Community Access & Inclusion Policy

## Community Feedback

In 2021 a community survey was conducted asking the community 'What would make Latrobe a better place to live, work, study and visit?' 1450 surveys were received, and Public Toilets came up 34 times.

What we heard was that people want more public toilet facilities that are **accessible, clean and safe**.

"Our public toilets need revamping... The standard at present is very poor and uninviting particularly for tourists"

"Most of the parks don't have toilet facilities and make it hard to enjoy to their full capacity."

"We need more public toilet facilities, including at parks. Most are CBD centric"

"When it comes to new infrastructure, please make them inclusive to ALL GENDERS. We need more gender-neutral bathrooms so we can stop having to choose between being mis gendered or attacked and having to use the disabled toilets"

Through the Vic Health Kids Co-Designing Healthy Places project in 2022 young people said they would like to see more family toilets that include a change table. They also told us that they would like to see more toilet cubicles that are larger and allow an adult and child to fit in them at the same time.

The YourGround Victoria Project of 2021 surveyed women and gender diverse people to map their perceptions of safety when exercising and recreating for health and wellbeing in open spaces, and public toilets have an impact on a positive experience. The main safety issues identified were around lighting and unsocial behaviours.

As required under the Gender Equality Act 2020, a Gender Impact Assessment has been completed on this Public Toilet Plan to ensure equal opportunities for people of all genders.



# Glossary

## PUBLIC TOILET

A public toilet is defined in this plan as a facility that is in a convenient location, based on an identified need and accessible by the general public during daylight hours at minimum, 7 days a week.

## CHANGING PLACES

Changing Places facilities provide suitable facilities for people who cannot use standard accessible toilets. These public toilets include an adult sized change table, ceiling hoist, a peninsular toilet, privacy screen and additional circulation space to meet the needs of people with complex disabilities and their carers.

## ADULT CHANGE

Adult Change facilities are similar to a Changing Places (includes a ceiling hoist and adult sized change table) however they may be missing some of the specific design specifications required to be accredited as a Changing Places (such as 24-hour access or circulation space).

## CPTED

Crime Prevention Through Environmental Design (CPTED) focuses on the design, planning and structure of physical spaces and infrastructure to reduce potential offenders from identifying opportunities to commit crime. The four main principles are natural surveillance, access control, territorial reinforcement and space management.

## UNIVERSAL DESIGN

The design of buildings, products or environments to make them accessible to people regardless of age, ability or other factors. There are seven principles of Universal Design which are equitable use, flexibility in use, simple and intuitive, perceptible information, tolerance for error, low physical effort, size and space for approach and use.

## FULLY AUTOMATED FACILITY

A safe, hygienic, accessible self-cleaning facility. These units are long lasting, made from durable and vandal proof material and are environmentally sustainable. They have reduced operational costs due to auto lock features and metered consumables.

## NATIONAL PUBLIC TOILET MAP

The National Public Toilet Map shows the location, access information and opening hours of public and some private facilities across Australia. Other information such as baby care and provision of showers is also listed. <https://toiletmap.gov.au/>

## WATER SENSITIVE URBAN DESIGN

Water Sensitive Urban Design (WSUD) is a set of principles that can be applied to sustainably manage water, providing opportunities to achieve more liveable cities with vibrant and healthy waterways.



*Ted Summerton Reserve,  
Gippsland Regional Cricket Centre*



*TEDAS Pavilion, Traralgon Recreation Reserve*



# Existing Facilities

## Summary of Existing Facilities

Latrobe City Council currently manages 37 public toilet sites across the municipality. In addition, there are 7 facilities that are part of existing buildings such as service centres and libraries. There are an additional 40 toilet facilities located at sporting venues which are not included in this plan as they are not classified as Public Toilets (only open on game day).

An Amenity and Accessibility Condition Audit completed by Gippsport in November 2022 and recent Building Condition Assessments rated 5 facilities in 'very good' condition, 28 in 'good / fair' condition and 4 in 'poor' condition. As a result, 14 have been identified for upgrades or replacement and 3 have been flagged for decommission.

Following the above audit and assessments, 90% of the public toilets were rated as being accessible. There are 2 Changing Places facilities and 1 Adult Change facility within the municipality and 8 sites currently have 24-hour access.

Latrobe City is generally well serviced with public toilet facilities however some gaps have been identified where there are no or insufficient facilities available, therefore this plan outlines construction of 5 new facilities by 2033.

The full list of existing public toilets and town maps can be found in the attachments section of the plan.





# Current and Future Needs

## Design Guidelines and Standards

The following guidelines will inform the design and siting of public toilet facilities so that they are accessible, safe and sustainable

General	<ul style="list-style-type: none"> <li>Align with Crime Prevention through Environmental Design principles</li> <li>Adhere to relevant design standards including Disability (Access to Premises – Buildings) Standards 2010</li> <li>Consider Universal Design Principles</li> <li>Include Changing Places facilities at regional play spaces and town activity centres</li> <li>Installation of fully automated facility (with automated locking and cleaning) where budget allows in locations with high vandalism / anti-social behaviour</li> <li>Update National Public Toilet Map on an annual basis</li> </ul>	Location	<ul style="list-style-type: none"> <li>Located within a walkable distance of main activity centres (approximately 400 meters), and at well utilised public open spaces that encourage a long duration of stay.</li> </ul> <p><b>Note:</b> Daily visits should exceed 30 to warrant provision of a public toilet</p> <ul style="list-style-type: none"> <li>Located where there are opportunities for informal surveillance from nearby activities</li> <li>Where possible, facilities to be integrated with other buildings but independently accessed</li> </ul>
Interior	<ul style="list-style-type: none"> <li>Good use of natural lighting sources</li> <li>Cubicles that are deep enough to allow a person to take in a mobility aid or pram</li> <li>Sharps disposal unit, sanitary bin, adult incontinence bin (located in the accessible cubicle), soap dispenser and grab rails at all locations (placed at accessible heights)</li> <li>Baby change table and nappy bin to be included at regional play spaces, destination locations and town centre facilities</li> <li>Materials, fittings and fixtures that are accessible and robust to withstand vandalism that can be easily cleaned and maintained</li> <li>Automated or flick mixer taps to minimise hand contact</li> <li>Full, round, secured toilet seat in contrast to the background (eg pan, wall or floor)</li> <li>No glass mirrors</li> <li>Use large toilet rolls where appropriate</li> <li>Effective contrast between vertical and horizontal surfaces around toilet door, fixtures, fittings, benches, toilets and signage</li> <li>Slip resistant floor surfaces in both wet and dry conditions</li> <li>Doors designed to be operated with minimum hand contact and that are not heavy or hard to open</li> <li>When upgrading or refurbishing facilities, replace any urinals with cubicles</li> </ul>	Exterior	<ul style="list-style-type: none"> <li>A façade that complements surroundings</li> <li>Clear, easy to read signage at the entry to toilets incorporating International Symbol of Access and Braille elements</li> <li>A continuous accessible path of travel from site entry and any onsite carpark - to and through toilet area</li> <li>CCTV/surveillance cameras where appropriate</li> <li>Accessible entrances facing the most active space, and visible from a distance</li> <li>Open layout and design</li> <li>Self-contained, lockable individual cubicles (including at least 1 fully accessible toilet) on a single frontage with direct access into the cubicles avoiding common areas</li> <li>All locations should have a sign with opening hours and location of nearest 24 hour facility, and a cleaning schedule sign with information on how to report issues</li> <li>Consideration to installing additional wash basins on the outside (for people to just wash their hands)</li> <li>Accessible drinking fountain and bottle refill station, including dog bowl located on the outside where appropriate</li> </ul>

## Sustainability

New, upgraded and refurbished facilities should include environmentally sustainable design elements to ensure the facilities contribute to a more sustainable environment and are cost effective for Council to operate and maintain, including:

- Consideration for Water Sensitive Urban Design principles
- Water efficient appliances and fixtures
- Consideration for use of rainwater tanks (where appropriate and cost effective)
- Water efficient landscaping
- Good solar orientation
- Energy efficient lighting
- Consideration for use of renewable energy systems such as solar panels (where appropriate and cost effective)
- Retention of existing structures where possible
- Re-use of existing materials
- Use of recycled and environmentally friendly materials
- Waste Management Plans for demolition and construction phases
- Constructed with durable, vandal resistant materials to reduce need for replacement



*Bert Thompson Reserve, Traralgon*

## Upgrade/Replace/Remove

### UPGRADE

Existing toilets that are appropriately located and in good structural condition that generally meet or could meet the Key Principles and Design Guidelines and Standards outlined in this plan will be upgraded as required.

Upgrades will ensure that facilities are compliant with all current building standards, including Disability (Access to Premises – Buildings) Standards 2010.

### REPLACE

Existing toilets that are well located but are unable to meet the Key Principles and Design Guidelines and Standards outlined in this plan should be replaced.

### REMOVE

Existing toilets that are poorly located, in poor condition and are surplus to requirements should be decommissioned. This may mean demolition or the reuse of a sound building for other purposes.

## Hours of Operation

The most central public toilet in each town activity centre should have 24-hour access.

The below locations have a 24-hour public toilet facility:

- Boolarra Railway Reserve
- Apex Park, Glengarry
- George Street Taxi Rank, Moe
- Commercial Road Bus Station, Morwell
- Village Green, Toongabbie
- Seymour Street Car Park, Traralgon
- Jaycees Park, Tyers
- Centenary Park, Yinnar



# Implementation Plan

## Criteria for prioritisation

The following reports have been used to determine the 2023-2033 implementation plan:

- Building Condition Assessments
- Amenity and Accessibility Condition Audit
- Internal Stakeholder Review
- Community feedback on draft Public Toilet Plan

## Implementation Plan

The full, detailed implementation plan can be found in the attachments section of this plan, however the key changes are as follows:

### NEW LOCATIONS

- Churchill CBD
- Morwell CBD (north side)
- Immigration Park, Morwell
- Traralgon CBD
- Edward Hunter Reserve, Moe

### UPGRADES

- Mathison Park, Churchill
- JS Dwyer Memorial Park, Moe
- Apex Park, Moe
- Kernot Hall, Morwell
- Commercial Road Bus Station, Morwell
- Morwell Rose Garden
- Morwell Town Common
- Seymour Street Car Park, Traralgon
- Jaycees Park, Tyers
- Centenary Park, Yinnar

### REPLACE

- Albert Street, Moe
- Newman Park, Traralgon
- Martin Walker Park, Yinnar South
- Albert Deppeler Memorial Tennis Courts, Yinnar South

### REMOVE

- Glendonald Park, Churchill
- Moe Town Hall
- Morwell Recreation Reserve

**Note:** Prior to undertaking works usage data will be collected and a report presented to Council for endorsement

## Measurements of Success

- National Public Toilet Map and Changing Places map is kept up to date with correct and current information regarding public toilet facilities
- 14 facilities are upgraded or replaced by 2033
- 5 new facilities are in operation by 2033
- 5 additional Changing Places facilities at highly utilised locations
- 3 facilities have been decommissioned
- Sharps disposal unit, sanitary bin, adult incontinence bin, hand soap and grab rails are at all locations, and baby change tables are at each regional play space and town centre facilities
- Additional internal movement space and low benches provided for adult change where space permits at new or upgraded facilities
- All facilities have signage to advise opening hours, number to call for emergency cleaning and maintenance, and location of nearest 24-hour toilet



## Attachments

- List of Public Toilets (as at January 2023)
- Supplementary List
- Town Maps
- 10 Year Implementation Plan
- Associated Contracts - Recommendations
- Public Toilet Design Examples



## ATTACHMENT 1

## List of Public Toilets

as at January 2023

## BOOLARRA

## WORKS PLANNED

Boolarra Railway Reserve, Tarwin Street



Unisex = 2  
Accessible = 1

**Open 24 hours**

Good location  
Good condition  
Good accessibility

BUILD00194

**Maintain**

## CHURCHILL

## WORKS PLANNED

Mathison Park, 19 Mackeys Road



Unisex / Accessible = 1

**Open dawn to dusk**

Poor location  
Good condition  
Good accessibility

BUILD00255

**Upgrade**  
(refer to Implementation Plan for details)

Glendonald Park, Amaroo Drive



Unisex / Accessible = 1

**Open dawn to dusk**

Poor location  
Fair to good condition  
Good accessibility

BUILD00248

**Remove**  
(refer to Implementation Plan for details)

## GLENGARRY

## WORKS PLANNED

Apex Park, 4-16 Main Street



Unisex = 3  
Accessible = 1

**Open 24 hours**

Good location  
Good condition  
Good accessibility

BUILD01062

**Maintain**

**MOE****WORKS PLANNED**

Moe Town Hall, 69 Albert Street



Female = 2 + 1 Accessible  
Male = 2 + 1 Accessible

**Open dawn to dusk**

Poor location  
Fair to good condition  
Good accessibility

BUILD00208

**Remove**

(refer to Implementation Plan for details)

Albert Street (Coles Carpark), 92 Albert Street



Unisex = 2  
Accessible = 1

**Open dawn to dusk**

Good location  
Fair to good condition  
Good accessibility

BUILD00868

**Replace**

(refer to Implementation Plan for details)

JS Dwyer Memorial Park (Gippsland Heritage Park), Lloyd Street



Female = 4  
Male = 2  
Accessible = 1

**Open dawn to dusk**

Excellent location  
Fair to good condition  
Good accessibility

BUILD00394

**Upgrade**

(refer to Implementation Plan for details)

Apex Park, Waterloo Road



Female = 2  
Male = 2  
Accessible = 1

**Open dawn to dusk**

Good location  
Good condition  
Good accessibility

BUILD00195

**Upgrade**




(refer to Implementation Plan for details)



## ATTACHMENT 1

## List of Public Toilets (cont.)

as at January 2023

MOE		WORKS PLANNED
Moe Botanic Gardens, Botanic Drive		Unisex = 2 Accessible = 1  <b>Open dawn to dusk</b>  Good location Good condition Good accessibility  BUILD00197
George Street Taxi Rank, 36 George Street		Unisex = 1 Accessible = 2  <b>Open 24 hours</b>  Good location Good condition Good accessibility  BUILD00210
All Abilities Play Space, Waterloo Road		Changing Places Facility  <b>Under construction 2023</b>

**MORWELL**

Kernot Hall, 50-70 Princes Drive



Unisex / Accessible = 1

**Open dawn to dusk**

Poor location  
Fair to good condition  
Good accessibility

BUILD00676

**WORKS PLANNED****Upgrade**

(refer to Implementation Plan for details)

Morwell Recreation Reserve, 9 Aherin Street



Female = 2  
Male = 1

**Open 24 hours**

Poor location  
Poor condition  
Poor accessibility

BUILT00239

**Remove**

(refer to Implementation Plan for details)

Rotary Gardens, Princess Drive



Unisex / Accessible = 1

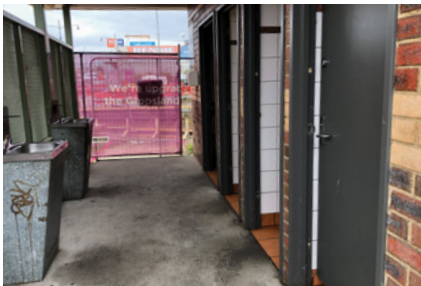
**Open dawn to dusk**

Poor location  
Good to very good condition  
Good accessibility

BUILD00761

**Maintain**

Commercial Road Bus Station, 212 Commercial Road



Unisex = 3  
Accessible = 1

**Open 24 hours**

Good location  
Good condition  
Poor accessibility

BUILD00212

**Upgrade**

(refer to Implementation Plan for details)



## ATTACHMENT 1

## List of Public Toilets (cont.)

as at January 2023

## MORWELL

## WORKS PLANNED

Morwell Rose Garden, Anne Street



Unisex / Accessible = 2

## Open dawn to dusk

Good location  
Good to very good condition  
Good accessibility

BUILD00237

## Upgrade

(refer to Implementation Plan for details)

Morwell Town Common, Elgin Street



Unisex = 3

Accessible = 1

## Open dawn to dusk

Good location  
Good condition  
Good accessibility

BUILD00141

## Upgrade

(refer to Implementation Plan for details)

Crinigan Road Bushland, Fairway Drive



Unisex / Accessible = 1

## Open dawn to dusk

Poor location  
Good condition  
Good accessibility

BUILD00150

## Connect to power

(refer to Implementation Plan for details)

## NEWBOROUGH

## WORKS PLANNED

Lake Narracan Boat Ramp, Sullivans Track



Female = 3

Male = 2

Accessible = 1

## Open dawn to dusk

Poor location  
Fair to good condition  
Poor accessibility

BUILD00243

## Maintain

**NEWBOROUGH**

Henry White Reserve, Balfour Street

Unisex = 2  
Accessible = 1**Open dawn to dusk**Good location  
Good to very good condition  
Good accessibility

BUILD00242

**WORKS PLANNED****Maintain**Haunted Hills Mountain Bike Park  
354 Haunted Hills Road, Hernes OakUnisex = 1  
Accessible = 1**Open dawn to dusk**Good location  
Very good condition  
Good accessibility**Maintain****TOONGABBIE**

Village Green, Cowan Street



Unisex / Accessible = 2

**Open 24 hours**Good location  
Good condition  
Good accessibility

BUILD01095

**WORKS PLANNED****Maintain****TRARALGON**

Newman Park, Peterkin Street

Unisex = 5  
Female / Accessible = 1**Open dawn to dusk**Fair to good location  
Fair to good condition  
Good accessibility

BUILD00205

**WORKS PLANNED****Replace**  
(refer to Implementation Plan  
for details)



## ATTACHMENT 1

## List of Public Toilets (cont.)

as at January 2023

## TRARALGON

## WORKS PLANNED

Bert Thompson Reserve, 48 Argyle Street



Unisex = 2  
Accessible = 1

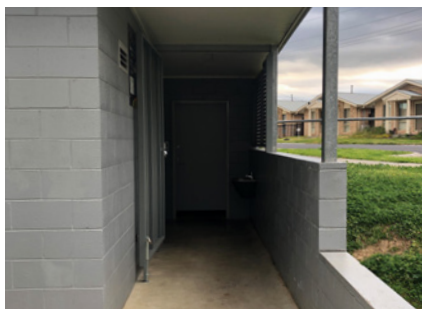
**Open dawn to dusk**

Poor location  
Good condition  
Good accessibility

BUILD00191

**Maintain**

Agnes Brereton Netball Courts, Breed Street



Unisex = 2  
Accessible = 1

**Open dawn to dusk**

Poor location  
Fair to good condition  
Good accessibility

BUILD00092

**Maintain**

Seymour Street Car Park, 32-34 Hotham Street



Unisex = 2  
Accessible = 1

**Open 24 hours**

Very good location  
Good condition  
Good accessibility

BUILD00475

**Upgrade**  
(refer to Implementation Plan for details)

Victory Park, Princess Highway



Unisex = 2  
Accessible = 1

**Open dawn to dusk**

Very good location  
Good condition  
Good accessibility

**Maintain**

**TRARALGON****WORKS PLANNED**

TEDAS Pavilion, 15-19 Whittakers Road



Unisex = 6  
Accessible = 1

**Open dawn to dusk**

Good location  
Good condition  
Good accessibility

BUILD00247

**Maintain**

Traralgon Railway Reserve, Hickox Street



Unisex / Accessible = 1

**Open dawn to dusk**

Good location  
Very good condition  
Good accessibility

**Connect to power**  
(refer to Implementation Plan for details)

Church Street Carpark



Female = 1  
Male = 1  
Female / Accessible = 1  
Male / Accessible = 1

**Open 8am to 8pm**

*Note: The building owner is responsible for opening, closing, cleaning and maintenance of this facility*

Poor location  
Poor condition  
Poor accessibility

**Nil - not Council asset****TRARALGON SOUTH****WORKS PLANNED**

Community Hall, Cats Drive



Unisex / Accessible = 1

**Open dawn to dusk**

Good location  
Good condition  
Good accessibility

**Maintain**

## ATTACHMENT 1

## List of Public Toilets (cont.)

as at January 2023

## TYERS

## WORKS PLANNED

Jaycees Park / Community Park, 70 Main Road



Female = 1  
Male = 1

## Open 24 hours

Good location  
Good condition  
Good accessibility

BUILD01121

## Upgrade

(refer to Implementation Plan  
for details)

## YALLOURN NORTH

## WORKS PLANNED

Lyons Park, Reserve Street



Unisex = 2  
Accessible = 1

## Open dawn to dusk

Good location  
Good condition  
Good accessibility

BUILD00200

## Maintain

## YINNAR

## WORKS PLANNED

Martin Walker Park, 35 Gilberts Road, Yinnar South



Female = 2  
Male = 1

## Open 24 hours

Poor Location  
Poor to fair condition  
Poor accessibility

BUILD00266

## Replace

(refer to Implementation Plan  
for details)

Yinnar Recreation Reserve East Pavilion, 88-144 Jumbuk Road



Unisex = 2  
Accessible = 1

## Open dawn to dusk

Good location  
Good condition  
Good accessibility

## Maintain



**YINNAR****WORKS PLANNED**

Centenary Park, 44 Main Street



Unisex / Accessible = 1

**Open 24 hours**

Good location  
Good condition  
Good accessibility

BUILD00269

**Upgrade**

(refer to Implementation Plan for details)

Albert Deppeler Memorial Tennis Courts, Yinnar South



Female = 2

Male = 1

**Open 24 hours**

Poor Location  
Poor condition  
Poor accessibility

**Replace**

(refer to Implementation Plan for details)

## ATTACHMENT 2

## Supplementary List

## CHURCHILL

**Churchill Community Hub**

Phillip Parade

Monday to Friday  
8.30am to 5.15pm**Georgina Place**

Marina Drive (next to bakery)

Monday to Friday  
6.30am to 4pmSaturday and Sunday  
7.30am to 2pm

## TRARALGON

**Traralgon Service Centre**

34-38 Kay Street

7 days a week  
6am to 8.30pm

Includes Changing Places facility

Changing Places is  
accessible 24h with  
MLAK**Gippsland Performing  
Arts Centre**

32 Kay Street

7 days a week  
10am to 4pm

Includes Changing Places facility

**Traralgon Railway Station**

Princess Highway

Open during public  
transport operating  
hours**Traralgon Plaza**

166-188 Franklin Street

Monday to Thursday  
9am to 5.30pmFriday  
9am to 9pmSaturday  
9am to 5pmSunday  
10am to 4pm**Gippsland Regional  
Aquatic Centre**

49 Breed Street

Monday to Friday  
6am to 9pmSaturday to Sunday  
8am to 6pm

## MOE

**Moe Service Centre**

1/29 George Street

Monday to Friday  
8.30am to 5.15pm

Includes Adult Change facility

Saturday  
9am to 12noon**Moe Plaza**

22 Moore Street

Monday to Friday  
8am to 6pmSaturday  
9am to 1pm**Moe Railway Station**

Lloyd Street

Open during public  
transport operating  
hours

## MORWELL

**Latrobe City Council Headquarters**

141 Commercial Road

Monday to Friday  
8.30am to 5.15pmThis venue has a parent room  
which includes private space,  
toddler play area and baby  
change station**Morwell Library**

63-65 Elgin Street

Monday to Friday  
8.30am to 5.15pmSaturday  
9am to 12noon**Morwell Railway Station**

Princess Drive

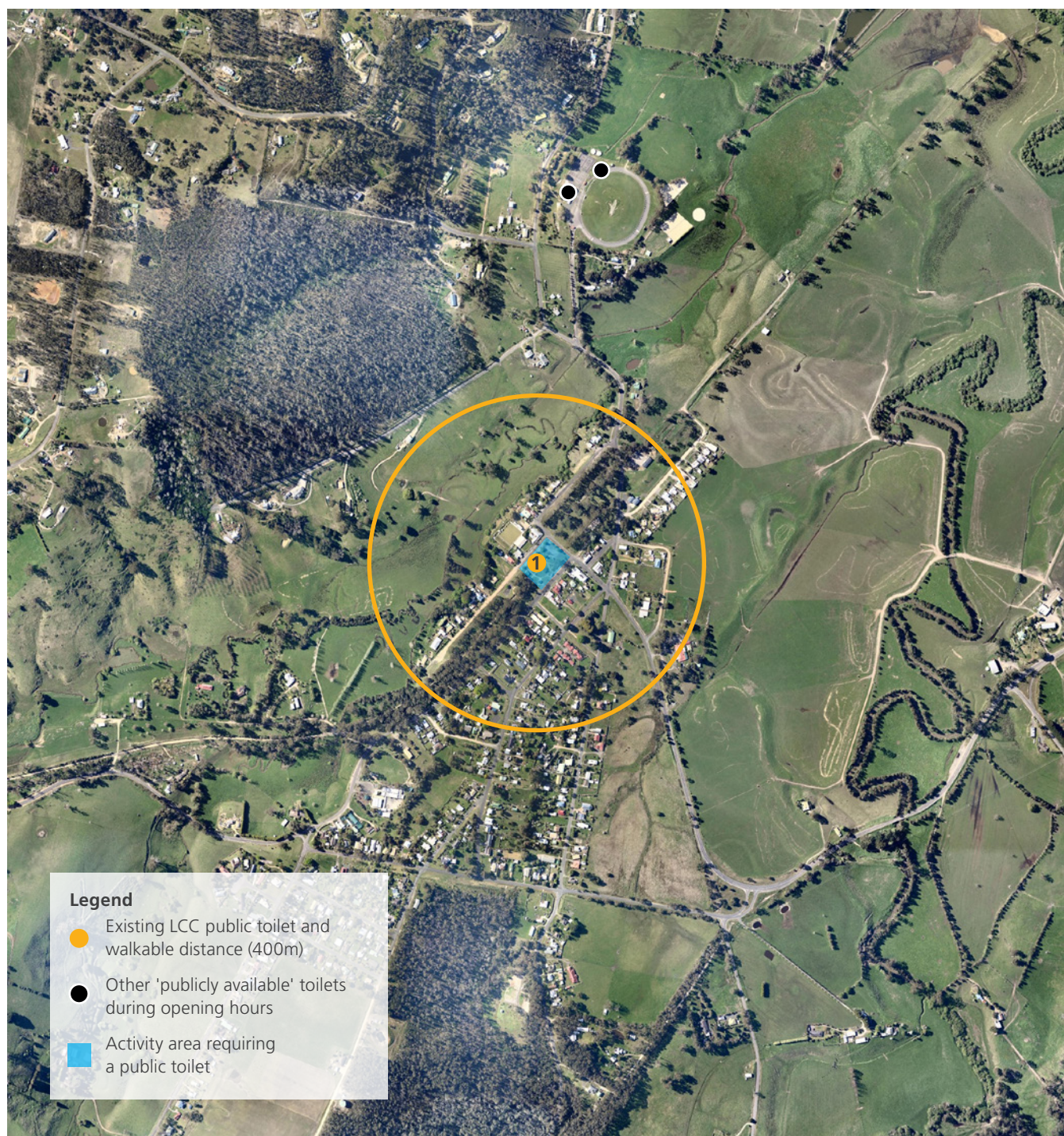
Open during public  
transport operating  
hours



## ATTACHMENT 3

## Town Maps

## BOOLARRA

**1. Railway Reserve**

Location: -38.378502, 146.273584

Configuration: 2 unisex, 1 accessible

Works required: maintain

When: ongoing

**Note:** Primrose Park, Boolarra was investigated as a potential site but location does not meet usage / demand requirements to justify need.



## ATTACHMENT 3

## Town Maps (cont.)

## CHURCHILL

**2. Mathison Park**

Location: -38.302044, 146.424063

Configuration: 1 unisex / accessible

Works required: upgrade

When: 2025/26

**3. Glendonald Park**

Location: -38.319511, 146.422241

Configuration: 1 unisex / accessible

Works required: remove

When: 2024/25



**GLENGARRY****4. Apex Park**

Location: -38.126550, 146.573680

Configuration: 3 unisex, 1 accessible

Works required: maintain

When: ongoing



## ATTACHMENT 3

## Town Maps (cont.)

## MOE

**5. Moe Town Hall**

Location: -38.175240, 146.262170

Configuration: 2 female, 2 male, 2 accessible

Works required: remove

When: 2027/28

**6. Albert Street (Coles Carpark)**

Location: -38.173840, 146.259600

Configuration: 2 unisex, 1 accessible

Works required: upgrade

When: 2027/28

**7. JS Dwyer Memorial Park  
(Gippsland Heritage Park)**

Location: -38.184446, 146.237642

Configuration: 4 female, 2 male, 1 accessible

Works required: upgrade

When: 2030/31

**8. Apex Park**

Location: -38.178430, 146.253170

Configuration: 2 female, 2 male, 1 accessible

Works required: upgrade

When: 2031/32

**9. Moe Botanic Gardens**

Location: -38.178540, 146.271730

Configuration: 2 unisex, 1 accessible

Works required: maintain

When: ongoing

**10. George Street Taxi Rank**

Location: -38.176379, 146.261979

Configuration: 1 unisex, 2 accessible

Works required: maintain

When: ongoing



## MORWELL



### 12. Kernot Hall

Location: -38.238810, 146.422560  
 Configuration: 1 unisex / accessible  
 Works required: maintain  
 When: ongoing

### 13. Morwell Recreation Reserve

Location: -38.239310, 146.390070  
 Configuration: 2 female, 1 male  
 Works required: remove  
 When: 2024/25

### 14. Rotary Gardens

Location: -38.235605, 146.393868  
 Configuration: 1 unisex / accessible  
 Works required: maintain  
 When: ongoing

### 15. Commercial Road Bus Station

Location: -38.237780, 146.398190  
 Configuration: 3 unisex, 1 accessible  
 Works required: upgrade  
 When: 2026/27

### 16. Morwell Rose Garden

Location: -38.236933, 146.390246  
 Configuration: 2 unisex / accessible  
 Works required: upgrade  
 When: 2028/29

### 17. Morwell Town Common

Location: -38.240331, 146.400029  
 Configuration: 3 unisex, 1 accessible  
 Works required: upgrade  
 When: 2031/32

### 18. Crinigan Road Bushland

Location: -38.212560, 146.426803  
 Configuration: 1 unisex / accessible  
 Works required: connect to power  
 When: 2026/27



## ATTACHMENT 3

## Town Maps (cont.)

## NEWBOROUGH

**19. Lake Narracan Boat Ramp**

Location: -38.163936, 146.317694

Configuration: 3 female, 2 male, 1 accessible

Works required: maintain

When: ongoing

**20. Henry White Reserve**

Location: -38.186771, 146.292078

Configuration: 2 unisex, 1 accessible

Works required: maintain

When: ongoing

**21. Haunted Hills Mountain Bike Park**

Location: -38.198900, 146.315660

Configuration: 1 unisex, 1 accessible

Works required: maintain

When: ongoing

**Note:** Boolarra Avenue, Newborough was investigated as a potential site but location does not meet usage / demand requirements to justify need.



**TOONGABBIE****22. Village Green**

Location: -38.058912, 146.622291

Configuration: 2 unisex / accessible

Works required: maintain

When: ongoing



## ATTACHMENT 3

## Town Maps (cont.)

## TRARALGON

**23. Newman Park**

Location: -38.196107, 146.544421

Configuration: 5 unisex, 1 female / accessible

Works required: relocate

When: TBC

**24. Bert Thompson Reserve**

Location: -38.193870, 146.542940

Configuration: 2 unisex, 1 accessible

Works required: relocate

When: TBC

**25. Agnes Brereton Netball Courts**

Location: -38.188801, 146.534416

Configuration: 2 unisex / 1 accessible

Works required: maintain

When: ongoing

**26. Seymour Street Carpark**

Location: -38.197371, 146.538973

Configuration: 2 unisex, 1 accessible

Works required: upgrade

When: 2027/28

**27. Victory Park**

Location: -38.196068, 146.541555

Configuration: 2 unisex, 1 accessible

Works required: maintain

When: ongoing

**28. TEDAS Pavilion**

Location: -38.200235, 146.546021

Configuration: 6 unisex, 1 accessible

Works required: maintain

When: ongoing

**29. Traralgon Railway Reserve**

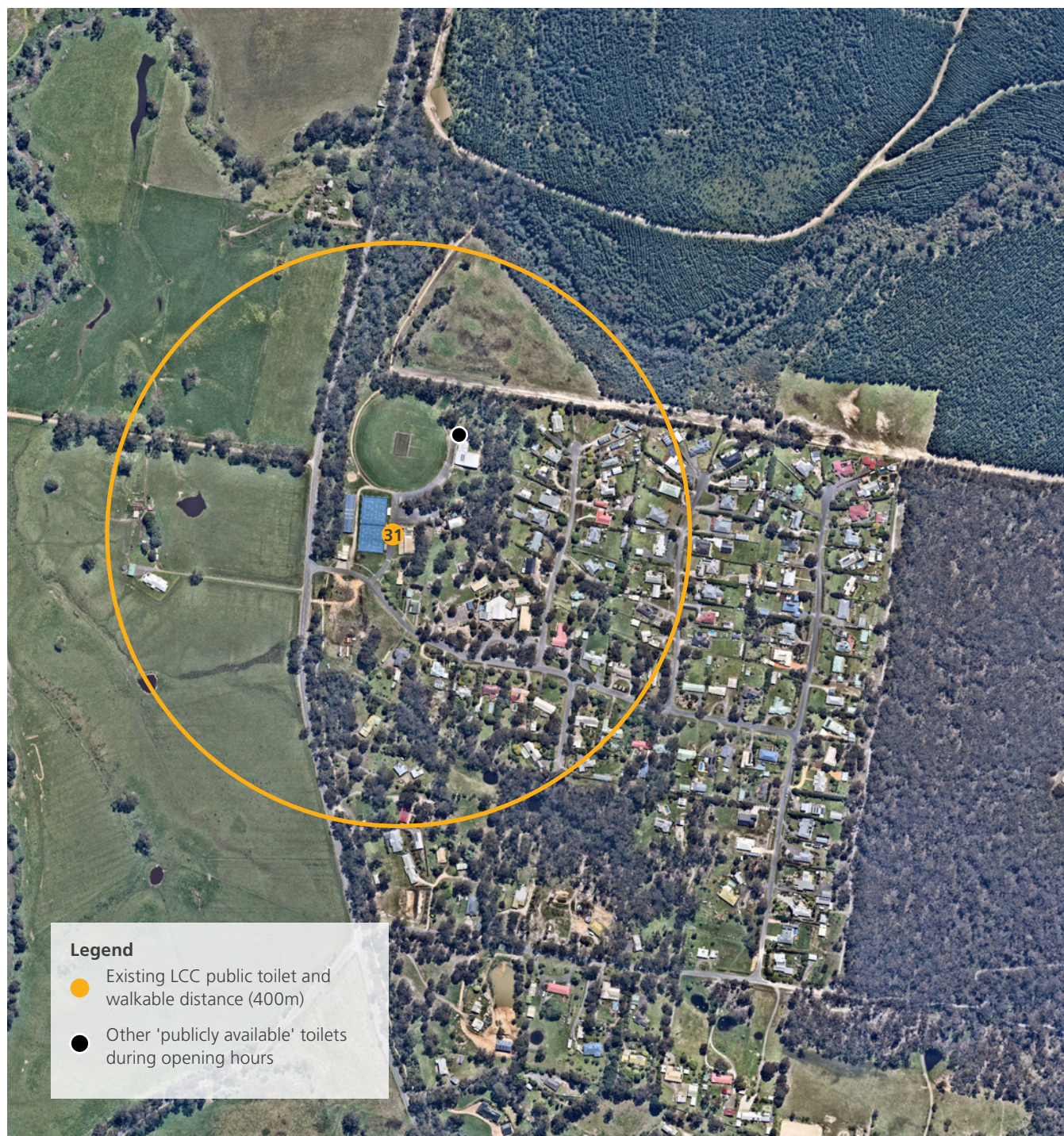
Location: -38.211184, 146.530016

Configuration: 1 unisex / accessible

Works required: connect to power

When: 2026/27



**TRARALGON SOUTH****31. Community Hall**

Location: -38.296476, 146.539423

Configuration: 1 unisex / accessible

Works required: maintain

When: ongoing



## ATTACHMENT 3

## Town Maps (cont.)

## TYERS

**32. Jaycees Park / Community Park**

Location: -38.149139, 146.480489

Configuration: 1 female, 1 male

Works required: upgrade

When: 2024/25



**YALLOURN NORTH****33. Lyons Park**

Location: -38.162624, 146.361649

Configuration: 2 unisex, 1 accessible

Works required: maintain

When: ongoing



## ATTACHMENT 3

## Town Maps (cont.)

## YINNAR

**34. Martin Walker Park**

Location: -38.376457, 146.361422

Configuration: 2 female, 1 male

Works required: relocate

When: 2030/31

**35. Yinnar Recreation Reserve**

Location: -38.327807, 146.339619

Configuration: 2 unisex, 1 accessible

Works required: maintain (by reserve committee)

When: ongoing

**36. Centenary Park**

Location: -38.321838, 146.327761

Configuration: 1 unisex / accessible

Works required: upgrade

When: 2028/29

**37. Albert Deppeler Memorial Tennis Courts**

Location: -38.360094, 146.360096

Configuration: 2 female, 1 male

Works required: replace

When: 2025/26

## ATTACHMENT 4

## 10 Year Implementation Plan – List of Works

LOCATION	ISSUE	SOLUTION
<b>Boolarra Railway Reserve</b> Tarwin Street, Boolarra	Mesh screens in front of handbasin need refresh No hand soap provided No baby change table	Replace with new screen design  Hand soap dispenser to be installed Add stainless steel bench
<b>Churchill CBD</b> Marina Drive, Churchill	Area does not have adequate facilities	Construct new facility in CBD including a Changing Places
<b>Mathison Park</b> Mackeys Road, Churchill	Not big enough for demand / poor location No hand soap provided No baby change table	Upgrade to a larger facility, include a Changing Places and consider location (This project will be included in future playground upgrade) Hand soap dispenser to be installed Add stainless steel bench
<b>Glendonald Park</b> Amaroo Drive, Churchill	Poor location / high vandalism and antisocial behaviour No hand soap provided No baby change table	Decommission
<b>Apex Park</b> Main Street, Glengarry	No hand soap provided Broken fold down baby change	Hand soap dispenser to be installed Replace with stainless steel bench
<b>Moe Town Hall</b> Albert Street, Moe	Poor location / high vandalism and antisocial behaviour  No hand soap provided	Decommission Larger facility to be built in alternate location, see Albert Street (Coles carpark) Hand soap dispenser to be installed
<b>Albert Street (Coles carpark)</b> Albert Street, Moe	Not big enough for demand  No hand soap provided	Knock down and replace with much larger facility (consider including Changing Places) Hand soap dispenser to be installed
<b>JS Dwyer Memorial Park (Gippsland Heritage Park)</b> Lloyd Street, Moe	No hand soap provided No power No all gender facility  Separate male / female compartments	Hand soap dispenser to be installed Connect to power and open 24-hours Replace cubical sign on accessible toilet with ungendered 'accessible toilet' sign Change configuration to individual cubicles
<b>Moe Apex Park</b> Waterloo Road, Moe	Poor natural surveillance  Mesh screens in front of handbasin need refresh No hand soap provided No baby change table  No all gender facility	Large renewal to improve CPTED (change layout to have the entry face carpark) Replace with new screen design  Hand soap dispenser to be installed Insufficient space for a baby change (this will be addressed in renewal project) Replace cubical signs with ungendered 'toilet' signs
<b>Moe Botanic Gardens</b> Botanic Drive, Newborough	No hand soap provided No sharps disposal unit provided Broken fold down baby change	Hand soap dispenser to be installed Sharps disposal unit to be installed Replace with stainless steel bench
<b>George Street Taxi Rank</b> George Street, Moe	No hand soap provided	Hand soap dispenser to be installed
<b>Kernot Hall</b> Princess Drive, Morwell	Poor condition / poor location  No hand soap provided No sanitary bin provided No baby change table	This facility will be refurbished as part of current works at Kernot Hall (poor location will be addressed through proposed new facility on other side of lake) Hand soap dispenser to be installed Sanitary bin to be provided Stainless steel bench to be added
<b>Immigration Park</b> Princess Drive, Morwell	Identified need for a new facility	Construct new facility near shared path (consider fully automated facility)



## ATTACHMENT 4

## 10 Year Implementation Plan – List of Works (cont.)

LOCATION	ISSUE	SOLUTION
<b>Morwell Recreation Reserve North Block</b> Aherin Street, Morwell	Very poor condition No hand soap provided	Decommission and not replace
<b>Rotary Gardens</b> Princess Dr, Morwell	No hand soap provided	Hand soap dispenser to be installed
<b>Commercial Road Bus Station</b> Commercial Road, Morwell	Very poor condition / constant vandalism / poor accessibility / no flat concrete path to door Mesh screens in front of handbasin need refresh No hand soap provided	Significant renewal once new facility on north side open Change hours to 'dawn to dusk' (after new facility built)  Replace with new screen design  Hand soap dispenser to be installed
<b>Morwell CBD (north side of train station)</b>	No facilities on north side	New facility – fully automated facility (consider including Changing Places)
<b>Morwell Rose Garden</b> Anne Street, Morwell	Poor natural light No hand soap available Sign on door reads 'disabled toilet'	Redesign to 1 compliant accessible cubicle Hand soap dispenser to be installed Replace cubical signs with ungendered 'accessible toilet' signs
<b>Morwell Town Common</b>	Poor ventilation / poor natural light Mesh screens in front of handbasin need refresh No hand soap provided No baby change table	Renewal project to install skylights and consider including a Changing Places Replace with new screen design  Hand soap dispenser to be installed Stainless steel bench to be added
<b>Crinigan Road Bushland Reserve</b>	Issues with septic tank (fills with stormwater) and solar panels (vandalised) No hand soap provided No sharps disposal unit provided No sanitary bin provided No baby change table	Connect to power  Hand soap dispenser to be installed Sharps disposal unit to be installed Provide sanitary bin Stainless steel bench to be added
<b>Lake Narracan Caravan Park - Caravan Park Toilet Block 1</b> South Shore Road, Newborough	Not a public toilet	Decommission
<b>Lake Narracan North Shore - Caravan Park Toilet Block 2</b> South Shore Road, Newborough	Not a public toilet	Decommission
<b>Lake Narracan South Shore</b> South Shore Road, Newborough	Poor condition	Decommission
<b>Lake Narracan Boat Ramp</b> Sullivans Track, Newborough	Poor location / poor accessibility No hand soap provided No separate all gender facility	Services in area dictates this location (septic) Hand soap dispenser to be installed Replace sign on accessible cubical with ungendered 'accessible toilet' sign
<b>Henry White Reserve</b> Balfour Street, Newborough	No hand soap provided No sharps disposal unit No baby change table	Hand soap dispenser to be installed Sharps disposal unit to be installed Stainless steel bench to be added

LOCATION	ISSUE	SOLUTION
<b>Haunted Hills Mountain Bike Park</b> Haunted Hills Road, Hernes Oak	No hand soap provided No sharps disposal unit	Hand soap dispenser to be installed Sharps disposal unit to be installed
<b>Village Green</b> Cowan Street, Toongabbie	No hand soap provided	Hand soap dispenser to be installed
<b>Newman Park</b> Peterkin Street, Traralgon	Poor location / not big enough for demand Mesh screens in front of handbasin need refresh No hand soap provided Sign on accessible cubical is female	At end of usable life, or as funding presents, knock down and rebuild as per master plan currently in development (include a Changing Places) Replace with new screen design  Hand soap dispenser to be installed Replace all cubical signs with ungendered 'toilet' signs
<b>Bert Thompson Reserve</b> Argyle Street, Traralgon	Poor natural light / poor location  No hand soap provided	At end of usable life, or as funding presents, knock down and rebuild (as per future master plan) Hand soap dispenser to be installed
<b>Agnes Brereton Netball Courts</b> Breed Street, Traralgon	Poor location / poor natural surveillance / poor natural light No hand soap provided No sharps disposal unit provided	Site restrictions don't allow for improvements to location or natural lighting, and construction of a new facility on other side unwarranted Hand soap dispenser to be installed Sharps disposal unit to be installed
<b>Traralgon Recreation Reserve Nth Block</b> Howitt Street, Traralgon	Not a public toilet	Decommission
<b>Harold Preston Reserve</b> Davidson Street, Traralgon	Not a public toilet Poor location / poor natural surveillance / poor natural light	Knock down and rebuild (this is to be identified in future master plan)
<b>Seymour Street Car Park</b> Seymour Street, Traralgon	Poor natural light / internal tiles too dark Should not be the 24-hour facility due to location No hand soap provided	Significant renewal once new 24-hour facility in CBD open  Change opening hours to dusk to dawn once new facility open Hand soap dispenser to be installed
<b>Traralgon CBD</b>	Not enough facilities in CBD / current 24-hour facility is undesirable and not fully accessible (doorways too narrow)	Install new 24-hour facility (fully automated facility) and consider including Changing Places Identified location is proposed multi-level carpark on Kay Street
<b>Victory Park</b> Princess Highway, Traralgon	No hand soap provided No sharps disposal unit provided	Hand soap dispenser to be installed Sharps disposal unit to be installed
<b>TEDAS Pavilion</b> Whittakers Road, Traralgon	No hand soap available	Hand soap dispenser to be installed
<b>Traralgon Railway Reserve</b> Hickox Street, Traralgon	No hand soap available No sharps disposal unit provided No mains power	Hand soap dispenser to be installed Sharps disposal unit to be installed Connect to mains power
<b>Community Hall</b> Cats Drive, Traralgon South	No hand soap available No sharps disposal unit provided No sanitary bin provided	Hand soap dispenser to be installed Sharps disposal unit to be installed Sanitary bin to be provided



## ATTACHMENT 4

10 Year Implementation Plan – List of Works (*cont.*)

LOCATION	ISSUE	SOLUTION
<b>Jaycees Park / Community Park</b> Main Road, Tyers	No accessible toilet  No hand soap available No sanitary bin provided No all gender facility	Redesign to 2 accessible cubicles (provision for accessible path from carpark to be included in project) Hand soap dispenser to be installed Sanitary bin to be provided Addressed by redesign project (signs to be ungendered 'accessible toilet')
<b>Lyons Park</b> Reserve Street, Yallourn North	Mesh screens in front of handbasin need refresh No hand soap available No sanitary bin provided No baby change table	Replace with new screen design  Hand soap dispenser to be installed Sanitary bin to be provided Stainless steel bench to be added
<b>Martin Walker Park</b> Upper Middle Creek Road, Yinnar	Non-compliant as septic tank too close to creek No power Poor location / poor accessibility / no accessible toilet / no flat concrete path to door No hand soap available No sanitary bin provided No baby change table No all gender facility	Knock down and rebuild in compliant location (will still need to use a septic tank) Connection to power to be included in project
<b>Centenary Park</b> Main Street, Yinnar	No hand soap available No baby change table Identified as a potential location for a larger facility	Hand soap dispenser to be installed Stainless steel bench to be added Upgrade to larger facility
<b>Albert Deppeler Memorial Tennis Courts</b> Middle Creek Road, Yinnar South	Poor location / poor accessibility / no accessible toilet / no flat concrete path to door / underutilised No hand soap available No sanitary bin provided No baby change table No unisex facility	Knock down and rebuild (including new septic system)

## ATTACHMENT 4

## 10 Year Implementation Plan – Yearly Costings

## YEAR 0-1 ACTIONS

July 2023 / June 2024	Responsible team	\$
Replace mesh screens with new design 6 locations - see list below	Building Maintenance	Included in building maintenance budget
Install baby change table (stainless steel bench) 10 locations – see list below	Building Maintenance	20,000
Install sharps disposal unit 8 locations – see list below	Building Maintenance	Included in building maintenance budget
Replace individual cubicle signs with ungendered 'toilet' sign 5 locations – see list below	Building Maintenance	Included in building maintenance budget
Install hand soap dispenser and add to service contract 30 locations – see list below	Building Maintenance / Property Services	Included in building maintenance budget and current service contract
Install cleaning schedule sign at each location	Building Maintenance	Included in building maintenance budget
Locations to be added to service contract to provide nappy bins 22 locations – see list below	Property Services	Included in current service contract
Locations to be added to service contract to provide sanitary bins 5 locations – see list below	Property Services	Included in current service contract
Provide adult incontinence bins at all locations and add to service contract	Property Services	Estimated annual cost \$12,000 (to be added to service contract)
Demolish 3 facilities at Lake Narracan (Caravan Park Block 1 & 2, and South Shore)		
Demolish Traralgon Recreation Reserve North Block	Building Projects	20,000
Design new facility in Traralgon CBD	Building Projects	Included in design for new proposed multilevel carpark
Mathison Park upgrade planning, including a Changing Places	Recreation Open Space Planning	Included in upcoming playground upgrade
Newman Park relocation planning, including a Changing Places	Recreation Open Space Planning	Included in future Master Plan
Review directional signage	Recreation Open Space Planning	Included in Recreation Open Space budget

## YEAR 1-2 ACTIONS

July 2024 / June 2025	Responsible team	\$
Design and construct new facility in Churchill CBD including a Changing Places	Building Projects	450,000
Renew Jaycees Park, Tyers	Building Maintenance	150,000
Demolish Glendonald Park, Churchill	Building Projects	50,000
Demolish Morwell Recreation Reserve	Building Projects	20,000
Additional estimated budget required under annual Capital Works Program		450,000



**ATTACHMENT 4****10 Year Implementation Plan – Yearly Costings (cont.)****YEAR 2-3 ACTIONS**

<b>July 2025 / June 2026</b>	<b>Responsible team</b>	<b>\$</b>
Upgrade facility at Mathison Park and include a Changing Places	Recreation Open Space Planning	Included in upcoming playground upgrades
Design and construct new facility at Immigration Park, Morwell	Building Projects	450,000
Design for new facility on north side of Morwell CBD	Building Projects	50,000
Design for Traralgon Railway Reserve to connect to power	Building Projects	10,000
Design for Crinigan Road to connect to power	Building Projects	10,000
Connect JS Dwyer Memorial Park (Gippsland Heritage Park) to power	Building Maintenance	50,000
Demolish old and construct new facility at Albert Deppeler Memorial Tennis Courts (including septic system)	Building Projects	350,000
<b>Additional estimated budget required under annual Capital Works Program</b>		<b>860,000</b>

**YEAR 3-4 ACTIONS**

<b>July 2026 / June 2027</b>	<b>Responsible team</b>	<b>\$</b>
Design for upgraded facility at Centenary Park, Yinnar	Building Projects	50,000
Connect Traralgon Railway Reserve to power	Building Projects	100,000
Connect Crinigan Road to power	Building Projects	100,000
Construct new facility on north side of Morwell CBD	Building Projects	400,000
Renew facility at Commercial Road, Morwell	Building Maintenance	100,000
Construct new facility in Traralgon CBD	Major Projects	Included in Regional Car Park Funding Program
<b>Additional estimated budget required under annual Capital Works Program</b>		<b>650,000</b>

**YEAR 4-5 ACTIONS**

<b>July 2027 / June 2028</b>	<b>Responsible team</b>	<b>\$</b>
Design for new facility at Albert Street, Moe	Building Projects	400,000
Demolish old and construct new facility		
Renew Seymour Street Car Park	Building Projects	250,000
Decommission Moe Town Hall facility	Building Projects	30,000
<b>Additional estimated budget required under annual Capital Works Program</b>		<b>400,000</b>

**YEAR 5-6 ACTIONS**

July 2028 / June 2029	Responsible team	\$
Demolish facility at Centenary Park, Yinnar and replace with larger facility	Building Projects	400,000
Renew Morwell Rose Garden	Building Maintenance	150,000
Design for new facility at Harold Preston Reserve in alternate location	Building Projects	50,000
Design for new facility at Martin Walker Park in alternate location (septic and connection to power to be included in project scope)	Building Projects	50,000
Design for new facility at Edward Hunter Reserve (connection to power to be included in project scope)	Building Projects	60,000
<b>Additional estimated budget required under annual Capital Works Program</b>		<b>560,000</b>

**YEAR 6-7 ACTIONS**

July 2029 / June 2030	Responsible team	\$
Construct new facility at Harold Preston Reserve	Building Projects	400,000
Design for upgraded facility at Apex Park, Moe	Building Projects	50,000
<b>Additional estimated budget required under annual Capital Works Program</b>		<b>450,000</b>

**YEAR 7-8 ACTIONS**

July 2030 / June 2031	Responsible team	\$
Design upgrade of Morwell Town Common, including a Changing Places	Building Projects	50,000
Redesign JS Dwyer Memorial Park (Gippsland Heritage Park) to individual cubicles	Building Maintenance	50,000
Construct new facility at Martin Walker Park	Building Projects	450,000
<b>Additional estimated budget required under annual Capital Works Program</b>		<b>500,000</b>

**YEAR 8-9 ACTIONS**

July 2031 / June 2032	Responsible team	\$
Upgrade facility at Apex Park, Moe	Building Projects	400,000
Upgrade Morwell Town Common and include a Changing Places	Building Projects	400,000
<b>Additional estimated budget required under annual Capital Works Program</b>		<b>800,000</b>

**YEAR 9-10 ACTIONS**

July 2032 / June 2033	Responsible team	\$
Construct new facility at Edward Hunter Reserve	Building Projects	500,000
<b>Additional estimated budget required under annual Capital Works Program</b>		<b>500,000</b>
<b>TOTAL estimated additional budget required as a result of the plan</b>		<b>5,170,000</b>
<b>TOTAL funded through existing renewal budgets</b>		<b>900,000</b>

**Note:** This implementation plan will be reviewed in 2028/2029 to ensure it continues to reflect the current needs of the community. At that time, consideration should be given to the following:

1. Redesigning Lake Narracan to individual cubicles
2. Relocating Newman Park (as per master plan currently in development)
3. Provision of facilities on popular walking paths (ie Morwell to Traralgon Shared Path / Gippsland Plains Rail Trail)
4. Provision of a facility in Boolarra Avenue, Newborough East (based on increased activation of area)

**Note:** Estimated figures in blue are unfunded projects which will need to be requested during the annual Capital Works Program development. The rest of the figures are funded through existing renewal budgets or other projects.



## ATTACHMENT 4

## 10 Year Implementation Plan – Yearly Costings (cont.)

**MESH SCREENS TO BE UPDATED**

- Boolarra Railway Reserve
- Moe Apex Park
- Commercial Road Bus Station, Morwell
- Morwell Town Common
- Newman Park, Traralgon
- Lyons Park, Yallourn North

**BABY CHANGE TABLE TO BE PROVIDED**

- Boolarra Railway Reserve
- Mathison Park, Churchill
- Apex Park, Glengarry
- Moe Botanic Gardens
- Kernot Hall, Morwell
- Morwell Town Common
- Crinigan Road Bushland Reserve, Morwell
- Henry White Reserve, Newborough
- Lyons Park, Yallourn North
- Centenary Park, Yinnar

**SHARPS BIN SERVICE TO BE ADDED**

- Moe Botanic Gardens
- Crinigan Road Bushland Reserve, Morwell
- Henry White Reserve, Newborough
- Haunted Hills Mountain Bike Park
- Agnes Brereton Netball Courts, Traralgon
- Victory Park, Traralgon
- Traralgon Railway Reserve
- Community Hall, Traralgon South

**REPLACE INDIVIDUAL CUBICLE SIGNS WITH UNGENDERED 'TOILET' SIGN**

- Moe Apex Park (all cubicles including accessible)
- Morwell Rose Garden (both cubicles and outside sign)
- Lake Narracan (accessible cubicle)
- JS Dwyer Memorial Park, Moe (accessible cubicle)
- Newman Park, Traralgon (all cubicles including accessible)

**Note:** over time all 'unisex' cubicle signs to be replaced with ungendered 'toilet' sign.

**HAND SOAP TO BE ADDED**

- Boolarra Railway Reserve
- Mathison Park, Churchill
- Apex Park, Glengarry
- Moe Town Hall
- Albert Street, Moe
- JS Dwyer Memorial Park, Moe
- Moe Apex Park
- Moe Botanic Gardens
- George Street, Moe
- Kernot Hall, Morwell
- Rotary Gardens, Morwell
- Commercial Road Bus Station, Morwell
- Morwell Rose Garden
- Morwell Town Common
- Crinigan Road Bushland Reserve, Morwell
- Lake Narracan Boat Ramp
- Henry White Reserve, Newborough
- Haunted Hills Mountain Bike Park
- Village Green, Toongabbie
- Newman Park, Traralgon
- Bert Thompson Reserve, Traralgon
- Agnes Brereton Netball Courts, Traralgon
- Seymour Street Car Park, Traralgon
- Victory Park, Traralgon
- TEDAS Pavilion, Traralgon
- Traralgon Railway Reserve
- Community Hall, Traralgon South
- Jaycees Park, Tyers
- Lyons Park, Yallourn North
- Centenary Park, Yinnar

**NAPPY BIN SERVICE TO BE ADDED**

Current locations that already have a baby change table:

- Apex Park, Glengarry
- Moe Town Hall
- George St Taxi Rank, Moe
- JS Dwyer Memorial Park, Moe
- Rotary Gardens, Morwell
- Village Green, Toongabbie
- Victory Park, Traralgon
- Bert Thompson Reserve, Traralgon
- Agnes Brereton Netball Courts, Traralgon
- Traralgon Railway Reserve
- TEDAS Pavilion, Traralgon Recreation Reserve
- Traralgon South Community Hall
- Jaycees Park, Tyers

Locations where baby change tables will be added:

- Boolarra Railway Reserve
- Mathison Park, Churchill
- Moe Botanic Gardens
- Kernot Hall, Morwell
- Morwell Town Common
- Crinigan Road Bushland Reserve, Morwell
- Henry White Reserve, Newborough
- Lyons Park, Yallourn North
- Centenary Park, Yinnar

**SANITARY BIN SERVICE TO BE ADDED**

- Kernot Hall, Morwell
- Crinigan Road Bushland Reserve, Morwell
- Community Hall, Traralgon South
- Jaycees Park, Tyers
- Lyons Park, Yallourn North

## ATTACHMENT 5

## Public Toilet Associated Contracts – Recommendations

## Cleaning of Public Conveniences

## CATEGORY 1

- 24h facility in large towns 3 x daily
- High use facilities in large

## CATEGORY 2

- All other facilities in large towns 2 x daily
- 24h facility in small towns

## CATEGORY 3

- Rural / remote 3 x per week

- 
- Install cleaning schedule sign at each location, including number to report any issues and QR code for Snap Send Solve
  - At contract renewal (due January 2024) set up online contractor timesheets to assist accurate job and time tracking

**Note:** The estimated additional yearly cost to increase cleaning frequency of Public Toilets to this recommended level will be \$158,860 (\$181,982 to \$340,842).

## Sanitary and Nappy Bin Disposal Service

- Baby change table and nappy bin to be included at regional play spaces, destination locations and town centre facilities (see plan for list of locations)
- All locations to have an adult incontinence bin (located in the accessible toilet) in addition to the infant nappy bin, and promoted accordingly <https://bins4blokes.org.au/resources/>
- All cubicles to have a sanitary bin

**Note:** The estimated additional yearly cost to include adult incontinence bins at all Public Toilet locations is \$12,000.

## Security

24-hour locations are:

- Boolarra Railway Reserve
- Apex Park, Glengarry
- George Street Taxi Rank, Moe
- Commercial Road Bus Station, Morwell
- Village Green, Toongabbie
- Seymour Street Car Park, Traralgon
- Jaycees Park, Tyers
- Centenary Park, Yinnar

All other facilities to be locked on dusk and opened at dawn


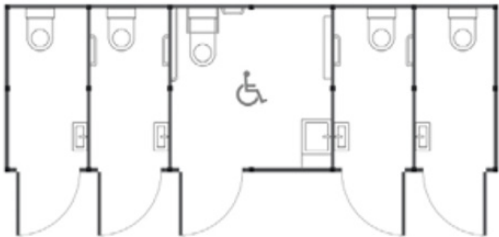
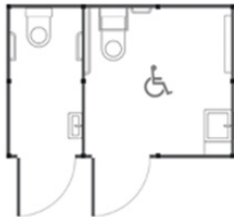


- At contract renewal (due August 2025) set up online contractor timesheets to assist accurate job and time tracking
- Consider electronic locking system

**Note:** The estimated cost for an online timesheet solution is up to \$5,000 per year, but could be significantly less if it can be done inhouse or provided by the contractor



## ATTACHMENT 6

## Public Toilet Design Examples

DESIGN	INCLUSIONS/ MEASUREMENTS	ESTIMATE \$\$
	<b>Changing Places</b>	\$350,000 – \$450,000
	2 Standard Toilet 2 Ambulant Toilet 1 Universal Access Toilet 7200mm x 2400mm	\$300,000 - \$400,000
	1 Standard Toilet 1 Ambulant Toilet 1 Universal Access Toilet 4800mm x 2400mm	\$200,000 – \$300,000
	1 Ambulant Toilet 1 Universal Access Toilet 3600mm x 2400mm	\$150,000 – \$250,000
	1x Universal Access Toilet 2400mm x 2400mm	\$100,000 - \$200,000
	<b>Fully Automated Facility</b> Fully Automated 1 Fully Automated 2 Fully Automated 3	\$150 ,000 - \$250,000 \$250,000 - \$350,000 \$300,000 - \$400,000

PROUDLY PRINTED IN  
**LatrobeCity**

*To obtain this information in languages other than English, or in other formats, please contact Latrobe City Council on 1300 367 700.*