

# My Community Bushfire Mitigation Plan (MCBMP)

## Tyers

This plan should be used in conjunction with your own personal Bushfire Survival Plan. If you require further information on developing your own Bushfire Survival Plan, visit [www.cfa.vic.gov.au](http://www.cfa.vic.gov.au).



Plan completed: 2021  
Plan revision date: October 2022

# MCBMP overview and information – Tyers

## Introduction

### Purpose

The primary objective is to highlight the current bushfire risk to the Tyers community and provide supporting material to assist property owners with future bushfire mitigation actions. To ensure community are empowered to make the right decisions, it is recommended this bushfire mitigation plan is used in conjunction with existing material to help provide an informed and balanced overview.

The Tyers community can reduce bushfire risk. Working together will achieve safer and more resilient communities.

### Key elements

This plan includes:

- A list of community contacts
- A list of important information for our stakeholders to know about our community.
- An overview of bushfire risk within the community.
- A list of all bushfire mitigations activities required to be completed before the fire danger period by government and non government organisations and the community.
- Egress options if a bushfire threatens.
- Key contact details for government and non government organisations.

### Bushfire risk overview

The likely bushfire scenarios that may impact on Tyers include:

- A bushfire burning in the public land and plantations to the north, west or east and impacting on the township. These bushfires will generate embers that will start spot fires in and around the township. Due to the undulating landscape in the northern section of the township, bushfire behaviour will be erratic and unpredictable.
- A bushfire burning under a south westerly influence and travelling through the farmland and impacting on the southern edge of the township. Due to the layout of the township, the grassfire could penetrate well into the township due to the lack of natural or manmade fuel breaks.

Any bushfire that impacts on the township is likely to start numerous spot fires. Bushfires that have been burning for some time north of the township have the potential to approach the township on a wide front. This would likely result in damage to life and property.

## Contacts

Community group	Contact/connection details
Tyers CFA	5120 3700 <a href="https://www.facebook.com/Tyers-CFA-1483737061882654">https://www.facebook.com/Tyers-CFA-1483737061882654</a>
Tyers and District Community Association	<a href="https://www.facebook.com/Tyers-District-Community-Assoc-1041379229221046/">https://www.facebook.com/Tyers-District-Community-Assoc-1041379229221046/</a>
Tyers Primary School	5191 8260 <a href="http://www.tyersps.vic.edu.au/">http://www.tyersps.vic.edu.au/</a>

### Personal emergency contacts

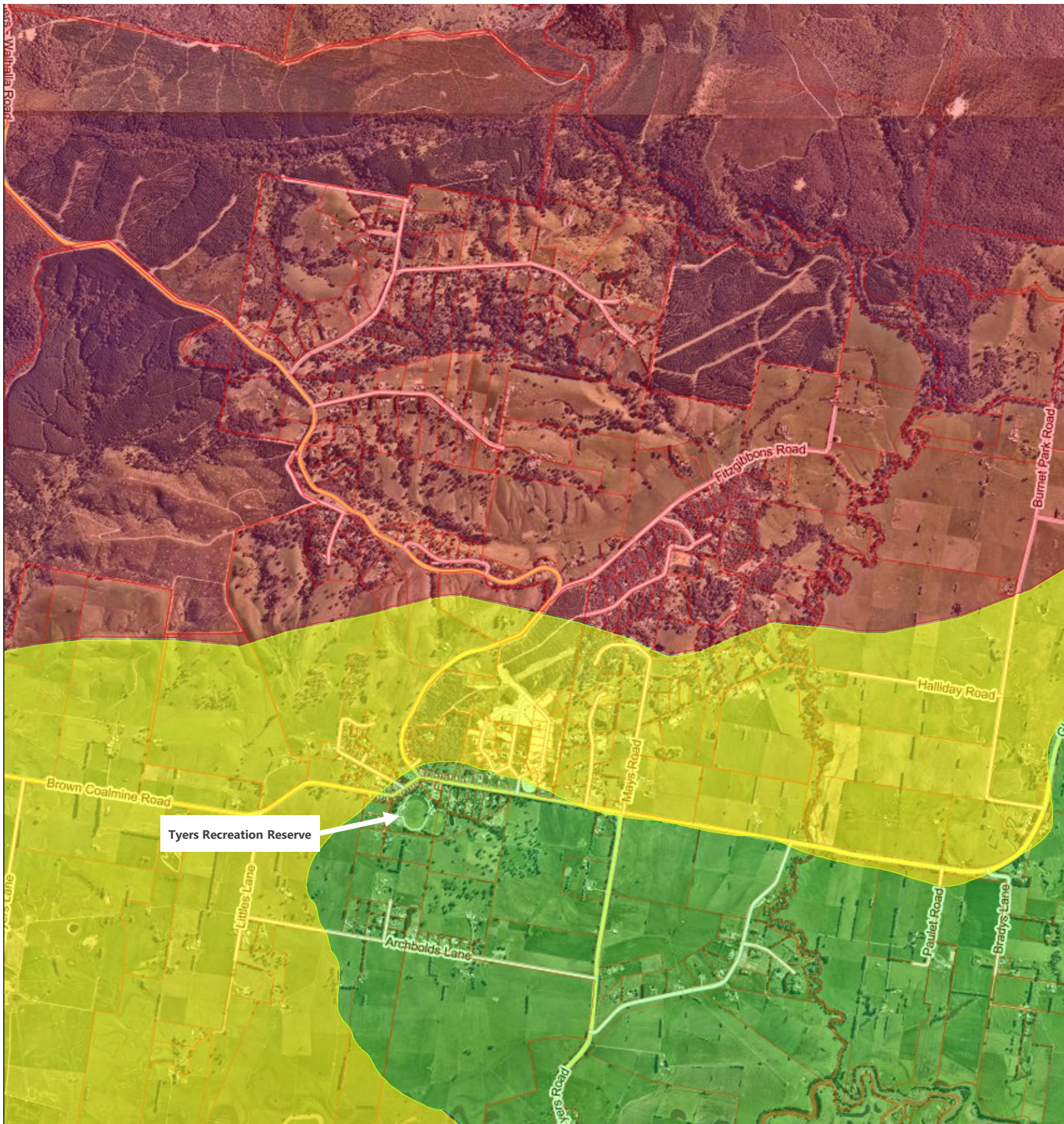
Family	
Friends – local	
Friends – outside the area	

### Awareness note:

Bushfires can approach your property from any direction. Ensure your personal plans have considered all bushfire scenarios apply to your property.

## Important information

Community assets	Tyers Community Hall Tyers Fire Station Tyers Recreation Reserve Tyers Primary School
Safer locations	Always follow emergency advice from the Vic emergency app and emergency broadcasters.  During bushfires, emergency services may indicate a safer location.
Local information systems	Always follow emergency advice from Vic emergency app and emergency broadcasters (ABC Gippsland and TRFM)  Monitor local Facebook pages or talk to your neighbours as a secondary source of information.
Recovery planning and local arrangements	Contact Tyers and District Community Association.
Guidelines	<ul style="list-style-type: none"><li>• <a href="#">Vegetation management 10/30 and 10/50 rules explained</a></li><li>• <a href="#">Landowner bushfire prevention obligations</a></li><li>• <a href="#">Roadside vegetation management and firewood collection</a></li><li>• <a href="#">Fire prevention notices</a></li><li>• <a href="#">Bushfires and designing your gardens</a></li></ul>
Bushfire safety information	<ul style="list-style-type: none"><li>• <a href="#">CFA Fire Ready Kit</a></li></ul>



Bushfire Risk Map

Tyers

What is your landscape bushfire risk?

This map indicates the landscape bushfire risk which has been developed using the multiple risk layers to determine the overall risk from a bushfire. Not all classifications below may be shown on the map.

<b>Extreme</b> <ul style="list-style-type: none"><li>• Poses an extreme risk to life safety.</li><li>• Limited access and egress options available.</li><li>• Vegetation close to the dwelling.</li><li>• Significant ember attack would impact the area.</li></ul>	<b>Significant</b> <ul style="list-style-type: none"><li>• Poses a significant risk to life safety.</li><li>• Mitigation options are available.</li><li>• Access and egress options.</li></ul>	<b>Lower</b> <ul style="list-style-type: none"><li>• Poses a lower risk to life safety.</li><li>• Little vegetation is present.</li><li>• Excellent access and egress is available.</li></ul>
---	--	---

Note: The risk classifications have been developed at a landscape level and are based on Code Red conditions. Information provided in this map is not to be used for building/planning purposes.

There are no Neighbourhood Safer Places within 10 kilometres of the Tyers township.



Your bushfire survival options

Refer to [www.cfa.vic.gov.au](http://www.cfa.vic.gov.au) for detailed information on your bushfire survival options. Ensure your plan includes how you will respond depending on the Fire Danger Rating.

**LEAVE EARLY**

- When the Fire Danger Rating is Code Red, leaving early is always the safest option.
- Leave early destinations could include homes of family and friends who live outside the risk area, a nearby town or other built-up area.

Always the safest option

**WELL PREPARED**

If leaving the high risk area is no longer an option, there may be options close to where you are that could protect you. These include:

- a well-prepared home (yours or your neighbour's) that you can actively defend on Severe and Extreme Fire Danger Rating days only
- private bushfire shelter (bunker) that meets current regulations
- designated community fire refuge.

Your safety is not guaranteed

**LAST RESORT**

In situations where no other options are available, taking shelter in one of the below may protect you from radiant heat:

- Neighbourhood Safer Place (Place of Last Resort)
- stationary car in a clear area
- ploughed paddock or reserve
- body of water (i.e. beach, swimming pool, dam, river, etc).

High risk of trauma, injury or death.

**KEEP YOURSELF INFORMED**  
VicEmergency Hotline – 1800 226 226  
VicEmergency App  
[www.emergency.vic.gov.au](http://www.emergency.vic.gov.au)  
[www.cfa.vic.gov.au](http://www.cfa.vic.gov.au)

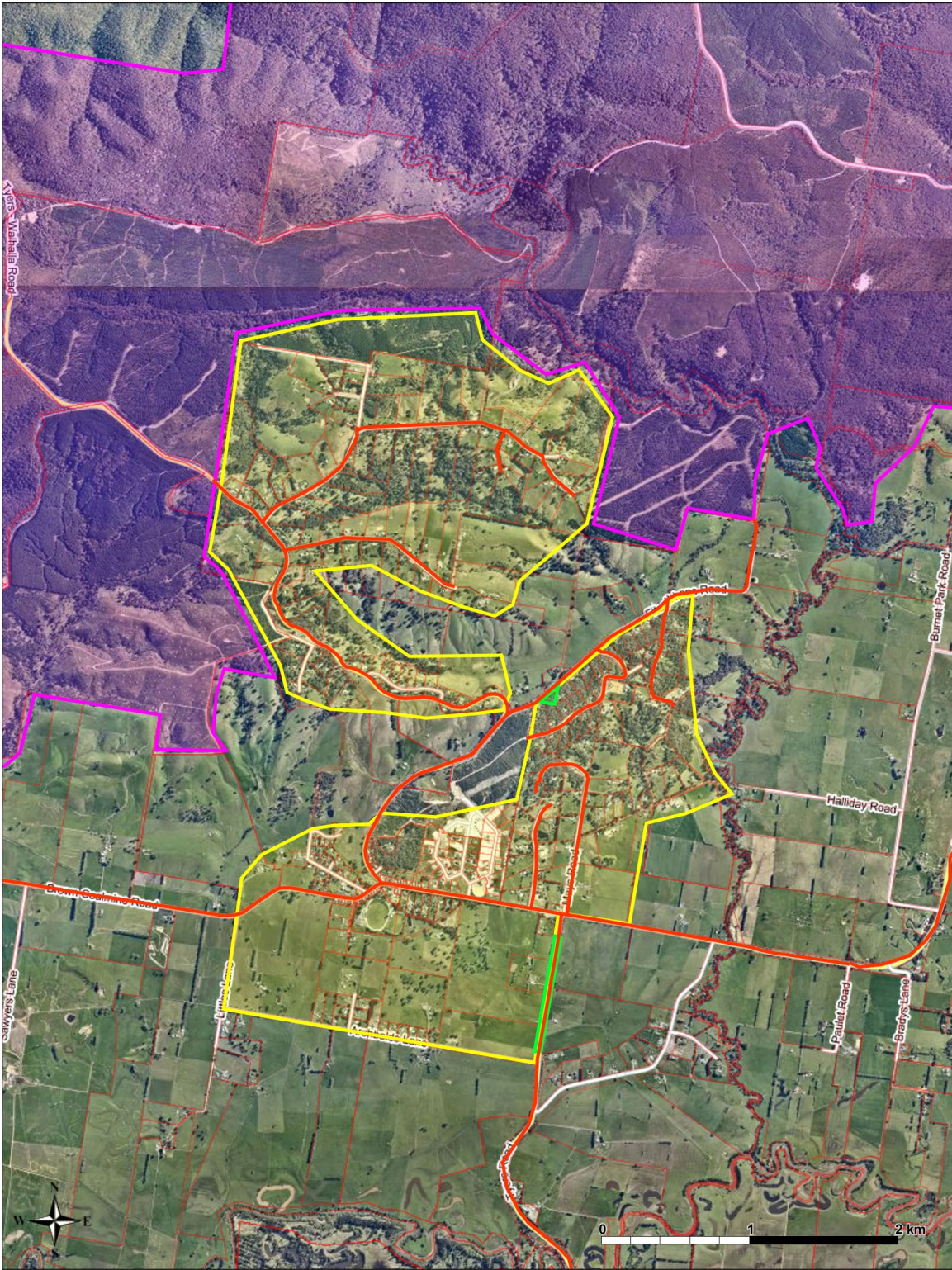
For further information and links to bushfire related websites,  
Visit [www.latrobe.vic.gov.au](http://www.latrobe.vic.gov.au).



In an emergency, always call 000. Be ready to provide the following information:

- Location of the emergency including address
- What the emergency is
- If anyone is injured or at risk.





**Legend**

Asset Protection Zone (APZ)

Asset Protection Zone (APZ)

JFMP planned burns

Planned Burning

Resident Preparation Zone

Resident Preparation Zone

Bushfire Management Zone

Bushfire Management Zone

Property Boundary

Map Printed from FireMaps on Tue Dec 21 20:05:35 AEDT 2021

- IMPORTANT INFORMATION
1.

This map has been prepared using data supplied to it by other agencies and entities.
2.

The data has not been verified or checked. The map may contain errors and omissions. The data has not been assessed on ground.
3.

There will be a margin of error in relation to the location of features recorded on the map. It is not possible to specify the extent or magnitude of that margin of error.
4.

Significant changes may have occurred;

i.

In the time between which the data was originally collected and produced; and

ii.

Since the map was produced.
5.

**Users** must, wherever possible, ground truth the map before relying on it or the accuracy of the map or the information recorded on the map for any purpose.
6.

There is no responsibility taken for any injury loss or damage arising from the use of this map or any errors or omissions in the information recorded on the map.
7.

The JFMP data has been sourced from <https://www.data.vic.gov.au/>

Bushfire Preparedness Works

Tyers

ANNUAL WORKS PROGRAM

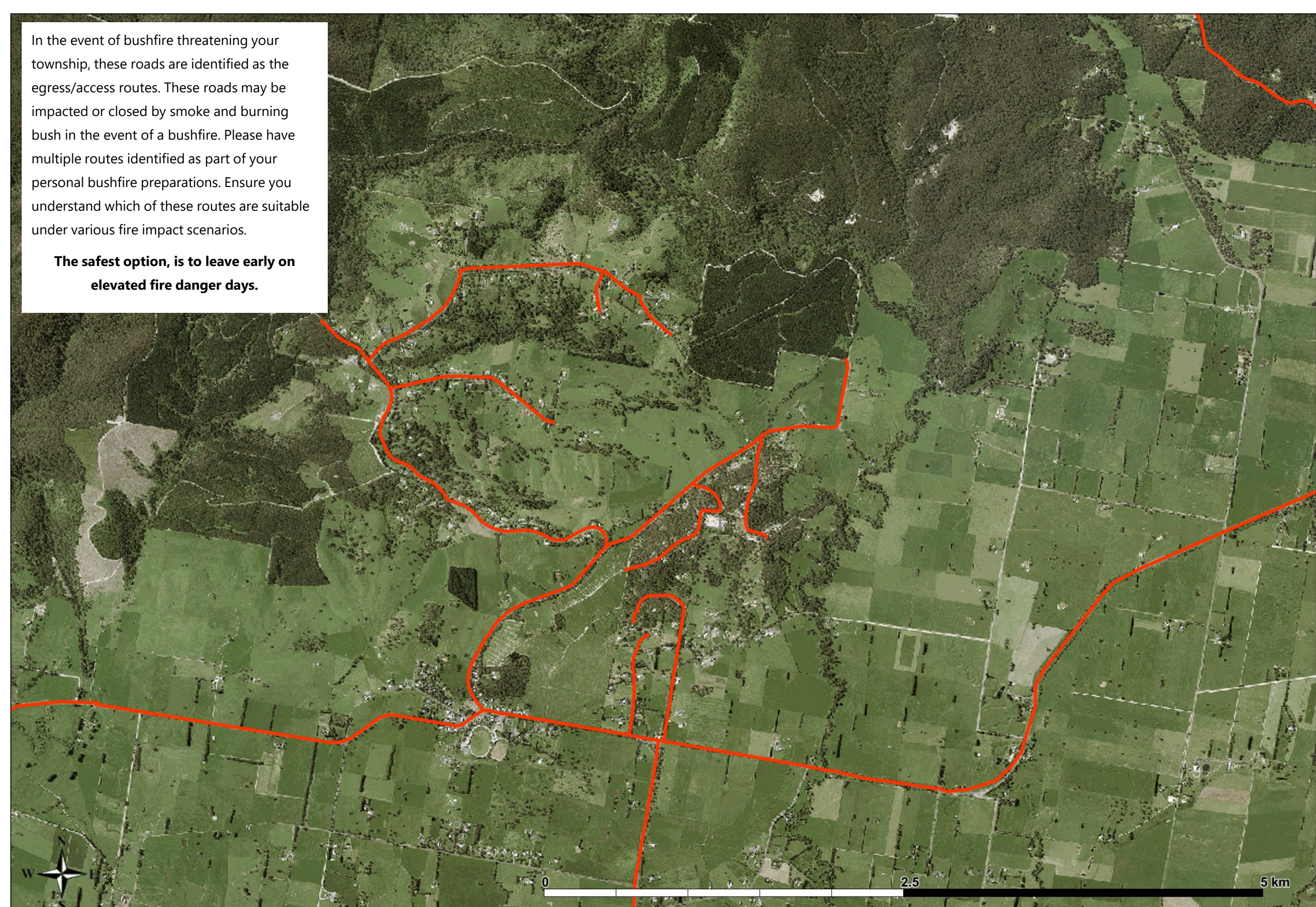
The below works have been identified by agencies and land managers to occur at regular intervals to mitigate the impact of bushfires. If you have any questions in relation to the mitigation treatment, contact the relevant organisation.

Map Ref No.	Strategy	Action	Responsible	Target/Action Date (Year)
	Community Education	Deliver Fire Safety Essentials session	CFA	Annually
	Community Education	Deliver Property Advice Visits Program.	CFA	Annually
	Community Education	Deliver a Fire Planning Workshop	CFA	2021/22 bushfire season
	Emergency Planning	Maintain the Community LEAP	Community	Annually
	Hazard reduction	Schedule and undertake a Burn Program in the Bushfire Management Zone.	CFA, FFMV, Parks Vic	Two scheduled
	Preparedness	Develop and maintain personal Bush Fire Survival Plans.	Residents	Annually – pre fire danger period
	Preparedness	Maintain vegetation around dwellings in Residential Preparation Zone	Residents	Annually – pre fire danger period
	Preparedness	Inspect Fire Access Tracks. Undertake routine maintenance if required.	Latrobe, FFMV, Parks Vic	In accordance with specifications outlined in MFMP.
	Hazard Reduction	Undertake maintenance as required under powerlines.	Ausnet	Annually
	Hazard Reduction	Undertake fire prevention inspections and issue notices.	Latrobe	Annually – pre fire danger period
	Hazard Reduction	Undertake egress/access roads maintenance.	Latrobe, RRV	Annually – pre fire danger period

Zone	Purpose	Suppression Objectives	Zone Characteristics
Asset Protection Zone	To protect human life, property and highly valued public / community assets.	To support the direct attack suppression strategies within the zone. To minimise bushfire impacts on adjacent assets.	Highly managed zone, main characteristics involve intense understorey management of near surface and elevated bushfire fuel. Designed to reduce bushfire intensity as it approaches assets.
Bushfire Management Zone	To provide strategic bushfire management areas which will reduce the speed and intensity of bushfires and reduce the potential for spot fire development. To aid containment of bushfires to existing land management boundaries.	To improve the likelihood and safe use of suppression strategies within the zone. and/or to reduce the likelihood of crown fire development within the zone and spot fire ignition potential from the zone.	Zone width related to suppression objectives and dependant upon: <ul style="list-style-type: none"><li>Topography</li><li>Aspect</li><li>Spotting potential</li><li>Location of adjacent fuel management areas</li></ul> Management practices should aim to achieve mosaic fuel reduction patterns so that the majority of the zone has an Overall Fuel Hazard of less than High.
Resident Preparation Zone	To identify localised areas where residents and property owners have a vital role to play in bushfire risk reduction.	To increase the preparedness of residents for bushfire and ensure that vegetation in close proximity to residential assets is adequately maintained. To provide a defensible space for residents and fire fighters and complement hazard reduction works carried out within Asset Protection Zones.	Residents and property owners should aim to achieve a property that is managed to reduce bushfire fuel and bushfire risk. This includes the availability of residents to manage their properties together as a community bushfire risk reduction effort. Vegetation management Guideline to be accessed to provide possible solutions.
Egress/Access Roads	To enable residents to travel away from bushfires and for emergency vehicles to access the area. These roads should be able to be traversed with minimal clearing following a bushfire.	To provide for residents to leave the area safely and efficiently and for emergency service vehicles to access the area. Tree fall should not impact on these roads.	The roadsides should be treated to prevent trees blocking the entire road. At least one lane should be always accessible. The vegetation on the roadsides is slashed/mowed or other treatments to reduce bushfire activity.

In the event of bushfire threatening your township, these roads are identified as the egress/access routes. These roads may be impacted or closed by smoke and burning bush in the event of a bushfire. Please have multiple routes identified as part of your personal bushfire preparations. Ensure you understand which of these routes are suitable under various fire impact scenarios.

**The safest option, is to leave early on elevated fire danger days.**



Egress/Access routes

# Contact information

For further information contact:

Organisation name	Contact details
Latrobe City Council	1300 367 700 <a href="mailto:latrobe@latrobe.vic.gov.au">latrobe@latrobe.vic.gov.au</a> <a href="http://www.latrobe.vic.gov.au">www.latrobe.vic.gov.au</a> <a href="https://www.facebook.com/LatrobeCity">www.facebook.com/LatrobeCity</a>
CFA	5120 3700 (District 27 – Morwell) <a href="http://www.cfa.vic.gov.au">www.cfa.vic.gov.au</a> <a href="https://www.facebook.com/cfavic">www.facebook.com/cfavic</a>
DELWP/FFMV	136 186 <a href="http://www.ffm.vic.gov.au">www.ffm.vic.gov.au</a> <a href="https://www.facebook.com/FFMVic">www.facebook.com/FFMVic</a>
Parks Victoria	13 19 63 <a href="http://www.parks.vic.gov.au">www.parks.vic.gov.au</a> <a href="https://www.facebook.com/ParksVictoria">www.facebook.com/ParksVictoria</a>
HVP	9289 1400 <a href="http://www.hvp.com.au">www.hvp.com.au</a> <a href="https://www.facebook.com/hvpplantations">www.facebook.com/hvpplantations</a>
Bushfire Recovery Victoria	1800 560 760 <a href="http://www.br.vic.gov.au">www.br.vic.gov.au</a> <a href="https://www.facebook.com/BushfireRecoveryVIC">www.facebook.com/BushfireRecoveryVIC</a>
Regional Roads Victoria	133 778 <a href="http://www.regionalroads.vic.gov.au">www.regionalroads.vic.gov.au</a> <a href="https://www.facebook.com/RegionalRoadsVictoria">www.facebook.com/RegionalRoadsVictoria</a>
Victoria Police	131 444 <a href="http://www.police.vic.gov.au">www.police.vic.gov.au</a> <a href="https://www.facebook.com/victoriapolice">www.facebook.com/victoriapolice</a>

