

## Reducing Alcohol Related Harm Policy Implementation Plan

There will be a staged implementation of this policy over 3 years commencing 1 January 2018. The implementation will include:

<b>Year 1</b>	<b>Educate relevant departments within Latrobe City Council and the broader community</b>
First Quarter	<ul style="list-style-type: none"> <li>• Implementation information and Communication plan developed to ensure consistent messaging across the organisation</li> <li>• Relevant departments identify existing practice and procedures that are consistent with the policy</li> <li>• Planning Services team to explore options for the Policy to be adopted into the Latrobe Planning Scheme through a planning scheme amendment</li> </ul>
Second Quarter	<ul style="list-style-type: none"> <li>• Relevant departments engage with stakeholders regarding future changes and provide copies of the policy</li> </ul>
Third Quarter	<ul style="list-style-type: none"> <li>• Relevant departments identify the changes to practice and procedures required to comply with the policy</li> </ul>
Fourth Quarter	<ul style="list-style-type: none"> <li>• Changes to practice, procedures, usage agreements and other areas implemented</li> </ul>
<b>Year 2</b>	<b>Council facilities and community events monitored and supported to comply with the Policy</b>
First Quarter	<ul style="list-style-type: none"> <li>• Monitoring undertaken</li> <li>• Changes to practice, procedures, usage agreements and other areas implemented</li> </ul>
Second Quarter	<ul style="list-style-type: none"> <li>• Monitoring undertaken</li> <li>• Changes to practice, procedures, usage agreements and other areas implemented</li> </ul>
Third Quarter	<ul style="list-style-type: none"> <li>• Monitoring undertaken</li> <li>• Identified incidences of non-compliance prioritised for proactive intervention</li> </ul>
Fourth Quarter	<ul style="list-style-type: none"> <li>• Relevant departments support non-complying groups towards compliance</li> </ul>
<b>Year 3</b>	<b>Full implementation of the Reducing Alcohol Related Harm Policy</b>
	<ul style="list-style-type: none"> <li>• Non-complying groups continue to be supported towards compliance</li> </ul>

The departments involved in the implementation of the Policy include:

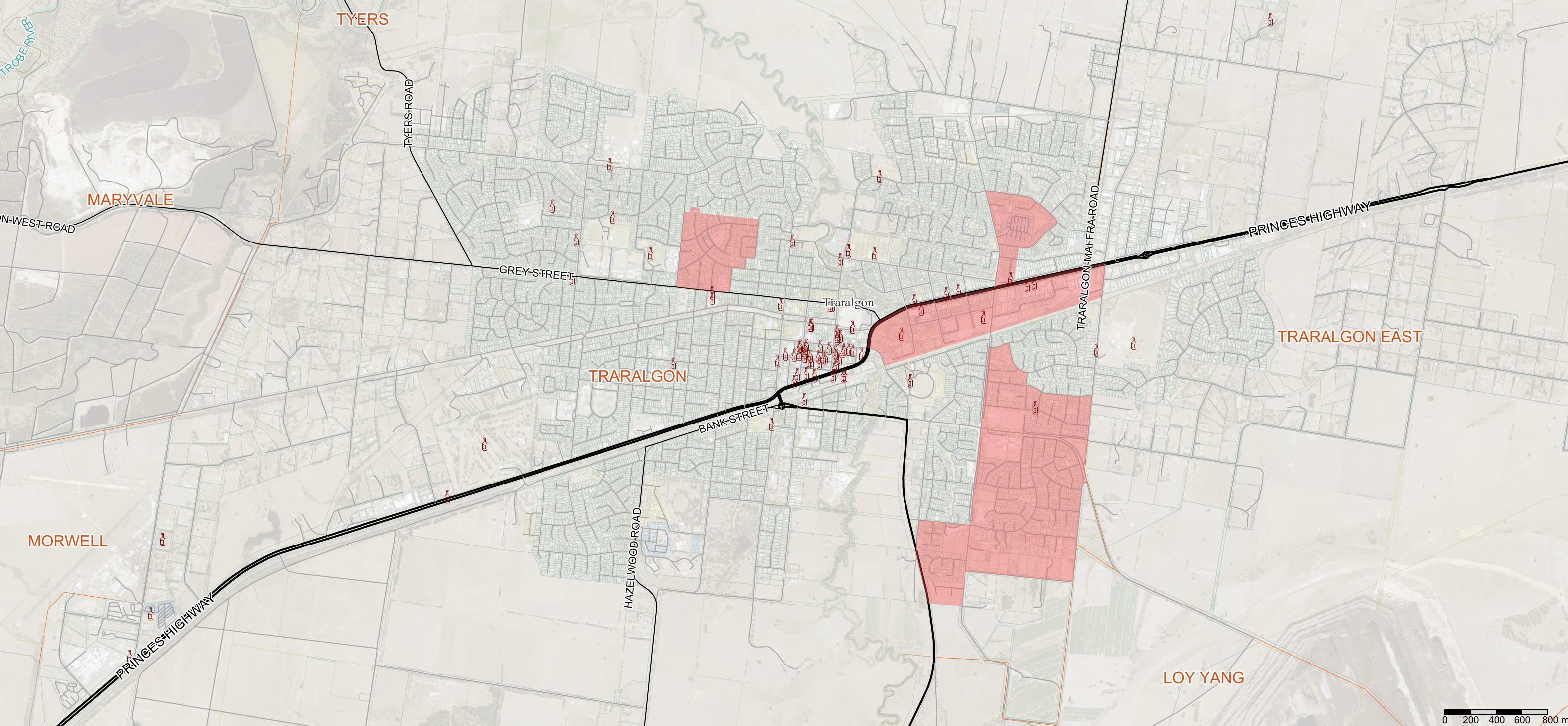
- Arts & Events
- Community Development
- Governance
- Planning Services
- Recreation

The following partners will be utilised in the implementation of the Policy:

Gippsport, Latrobe City Liquor Accord and Victoria Police.

An annual report will be provided to Council to inform on the progress of the implementation plan.





TYERS

MARYVALE

GREY STREET

Traralgon

TRARALGON

BANK STREET

HAZELWOOD ROAD

TRARALGON MAFFRA ROAD

PRINCES HIGHWAY

TRARALGON EAST

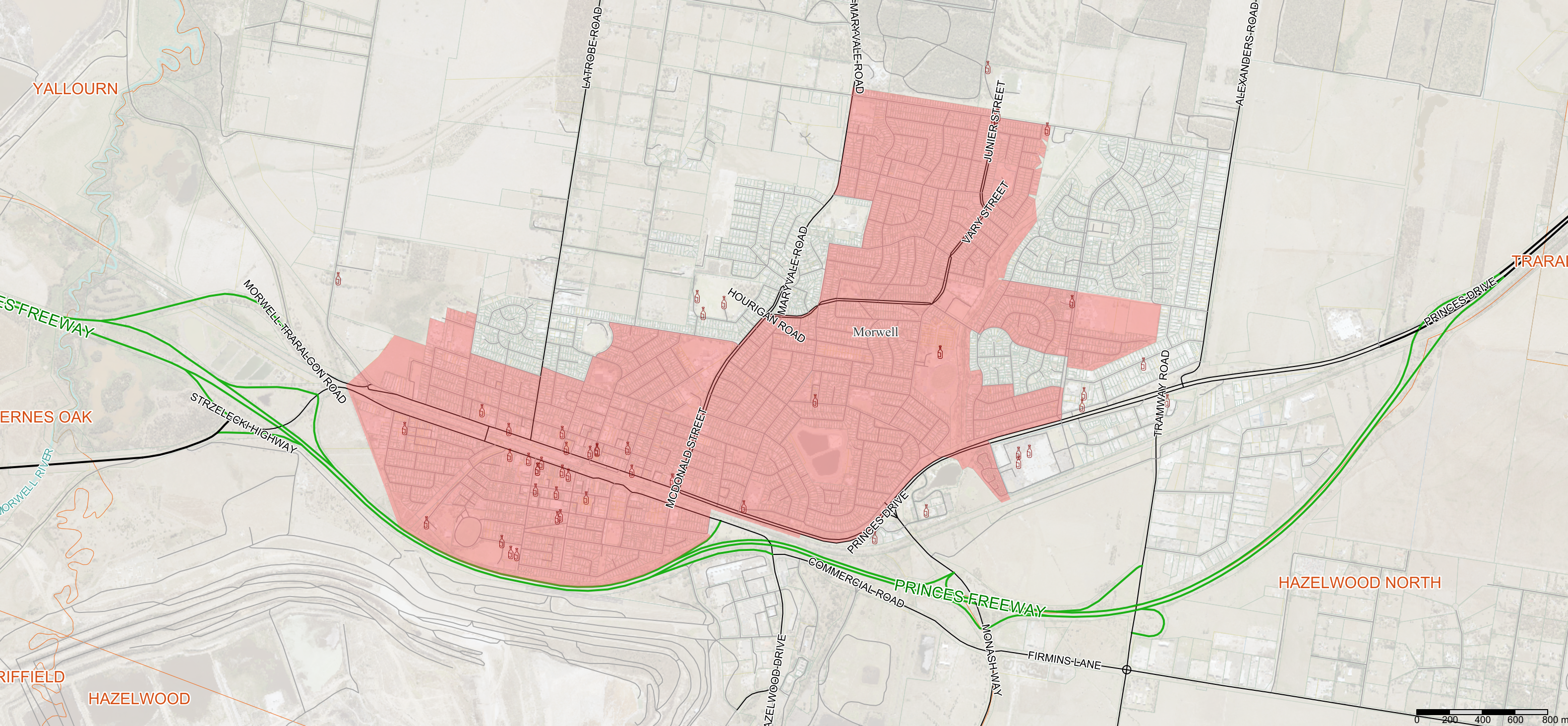
MORWELL

PRINCES HIGHWAY

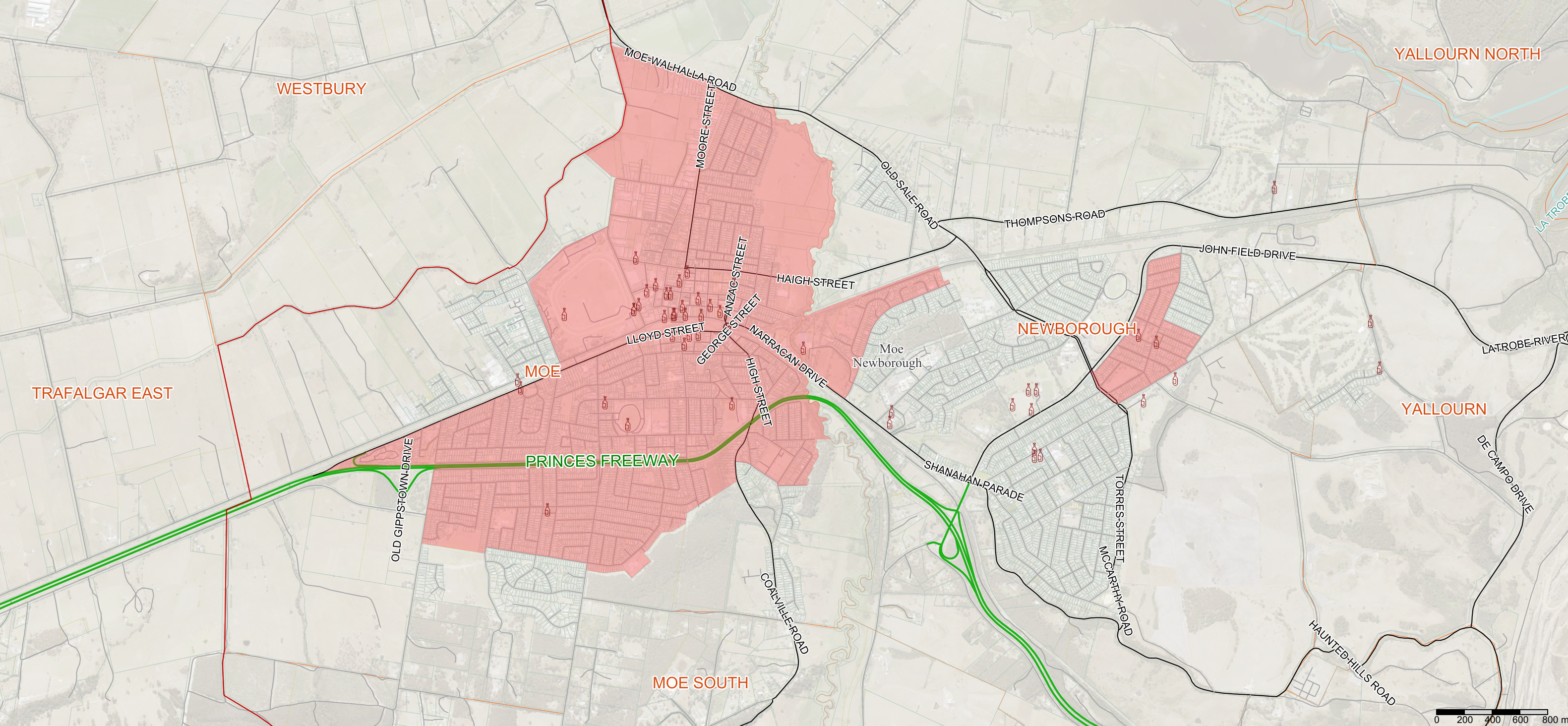
LOY YANG

0 200 400 600 800 m









WESTBURY

YALLOURN NORTH

TRAFALGAR EAST

MOE

NEWBOROUGH

YALLOURN

MOE SOUTH

PRINCES FREEWAY

OLD GIPPS TOWN DRIVE

MOE-WALHALLA ROAD

MOORE STREET

ANZAC STREET

HAIGH STREET

LLOYD STREET

GEORGE STREET

HIGH STREET

COALVILLE ROAD

OLD SALE ROAD

THOMPSONS ROAD

JOHN FIELD DRIVE

LATROBE RIVER

DE CAMPO DRIVE

HAUNTED HILLS ROAD

TORRES STREET

SHANAHAN PARADE

0 200 400 600 800 m



