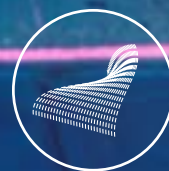
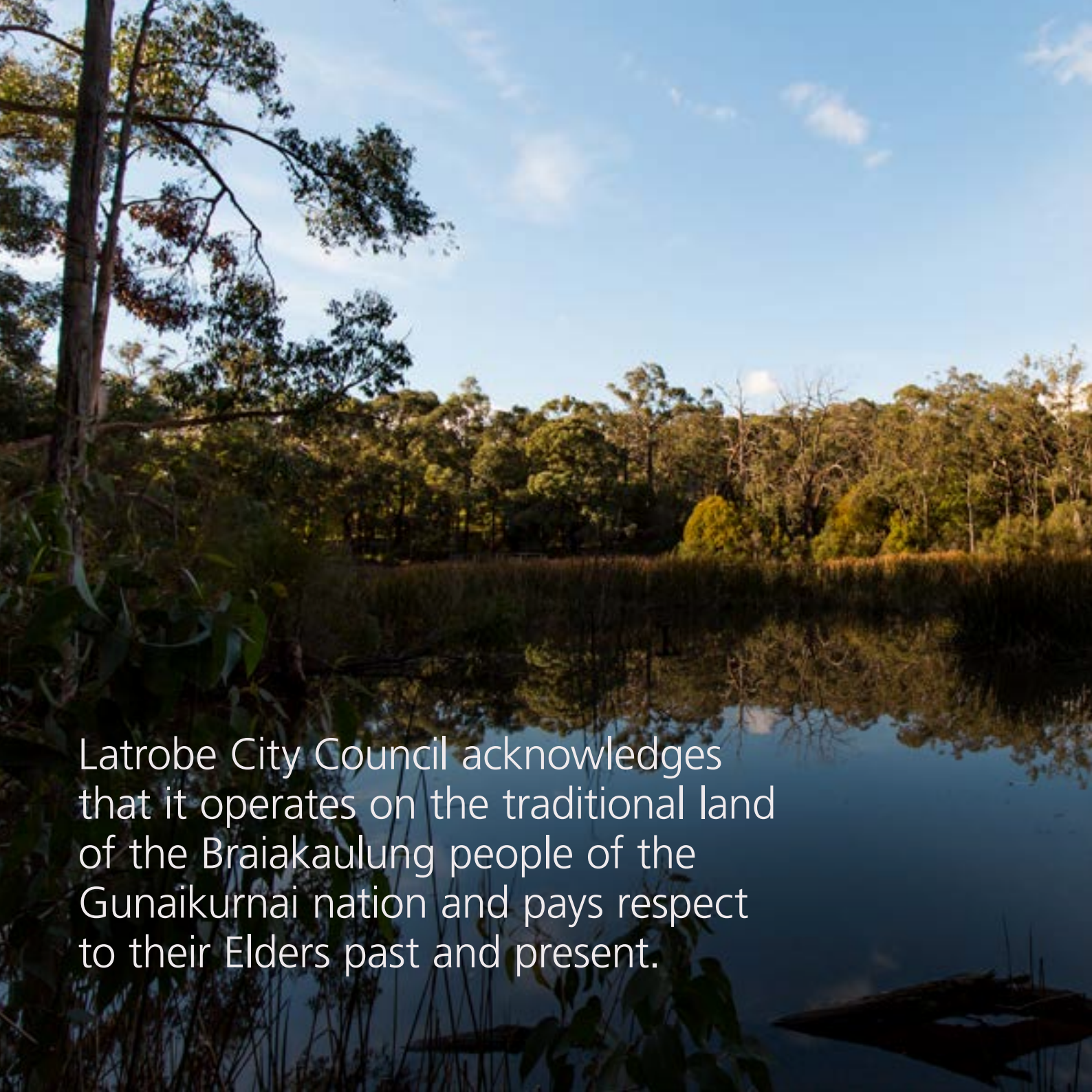




Latrobe City Council
Annual Report Summary

2020—2021





Latrobe City Council acknowledges that it operates on the traditional land of the Braiakaulung people of the Gunaikurnai nation and pays respect to their Elders past and present.

Mayor's Report

As Mayor of Latrobe City for this past year, I have seen first-hand how our council staff and community members have worked tirelessly for our community.

Their dedication particularly came to the fore during the flood and storm event of 9 and 10 of June. Both our staff and community members were there rolling up their sleeves to comfort people in need and to provide them with support and services to start pursuing a return to normal life. Be it clearing trees, cooking and delivering food, helping obtain medical supplies, checking on neighbours and their needs, that is what they did all in the name of selflessly serving our community.

While we continued to grapple with the COVID pandemic and lockdowns, may I urge you all to continue to support each other and shop locally whenever you can to keep our economy buoyant. Too many businesses are struggling to survive and without us helping one another, they will not survive and jobs you support today are contributing to us all being part of a stronger Latrobe City tomorrow.

After the news that Yallourn Power Station will close in 2028, Council is preparing for the impact that will have on our Community by setting up a bi-partisan Transition Taskforce to further support existing Industry and encourage new Industry to our City. Council has asked all levels and both sides of Politics to support Council in any way they can. We have gone down this track before with the closure of Hazelwood Power Station and this time we need to actively Transition our Economy, yet we cannot and should not do it alone. While the past 12 months has been challenging, it has also been rewarding and we deserve to celebrate what we have achieved by working together.

Cr Sharon Gibson

Mayor
Latrobe City Council



27,547

meals on wheels delivered to people in need.

2,925,134

bin lifts as part of Council's kerbside waste collection.

79

sporting reserves. BMX tracks and skate parks maintained for recreation.

05

unfenced off-leash dog areas.

13,818

pets registered 10,623 dogs and 3,195 cats across the city.

2697

clients received care services in the home.

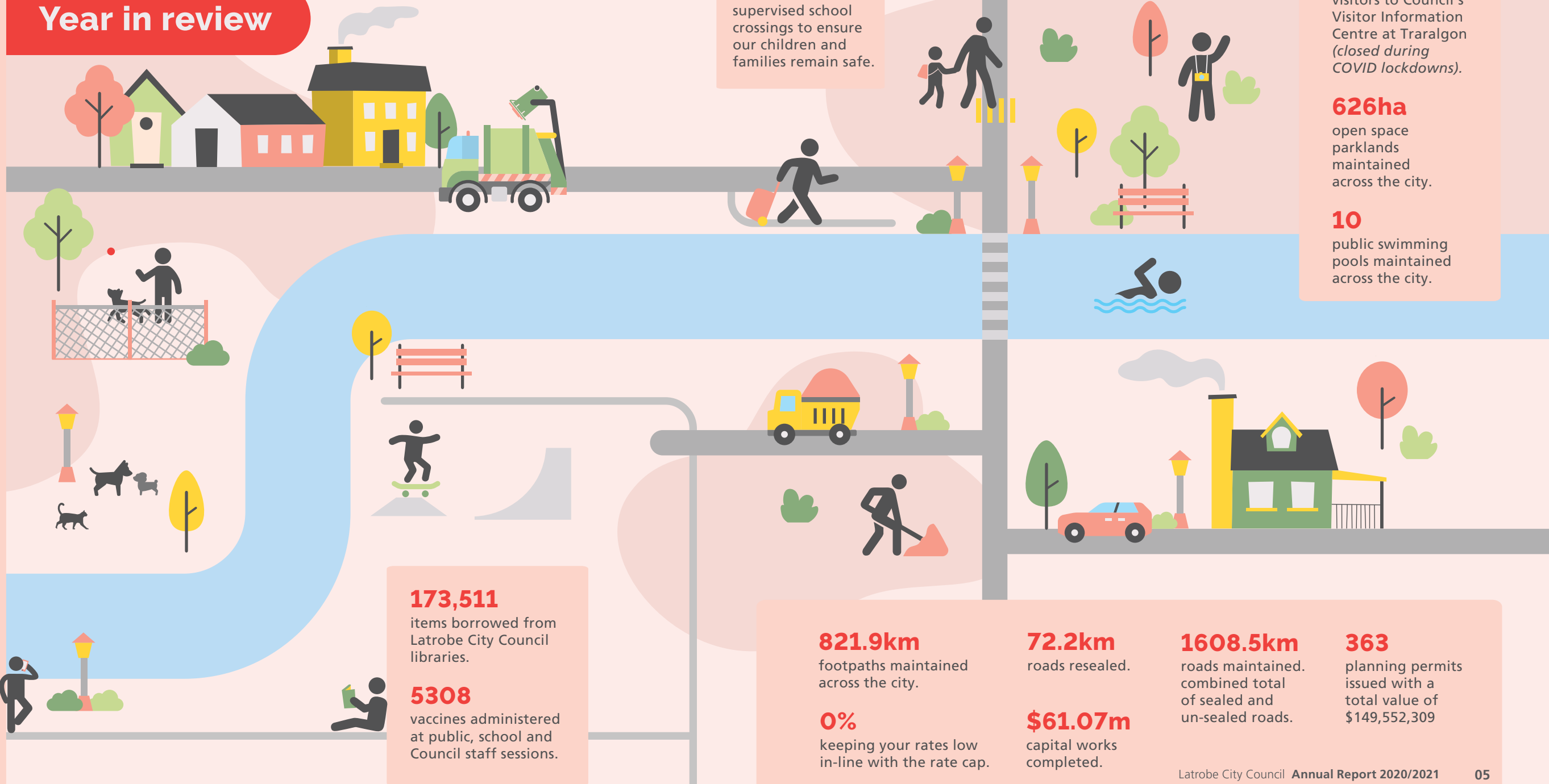
74,499

calls answered by Council's Customer Service staff.

54,042

online visits to Council's tourism website, visitlatrobe.city.com

Year in review



Council stands by the community during flood and storm recovery



Latrobe City was struck by significant flooding and storm damage when wild weather impacted the municipality – and broader Victoria – on 9 and 10 June 2021.

The flooding of Traralgon Creek was the largest since 1978, affecting homes and businesses, and exacerbated by further rain on 11 June.

Other areas, such as farms around Yinnar, were also flooded, with many people losing stock, fodder and fencing to the rising water.

The smaller communities of Yinnar South, Jeeralang, Budgerie and Boolarra were affected by a cyclone-like storm front that brought down trees on private property and across roads. Others in the municipality were also affected.

As a result of the weather, many people were without power for days on end and sustained damage to their homes and other property.

“Right from the start of the unfolding emergency, Latrobe City Council supported its community through a number of channels,” Latrobe City Council Mayor, Cr Sharon Gibson said.

“We were there to help clear trees, restore access to roads, and provide information and support. We worked with our valued community members to assess the damage and help them get on the way to returning to life as they knew it.”

Council will continue to support residents as they address the damage to their homes and property, providing advice and advocacy and ensuring they receive up-to-date information about financial or other relief.

Project beautifies Morwell's CBD



The streetscape of Morwell's Central Business District (CBD) has been enhanced by the completion of the Morwell CBD Revitalisation project.

Federal Member for Gippsland Darren Chester opened the nearly \$3.75 million revitalisation of Commercial Road and Tarwin Street in March, as part of the Future Morwell project.

The project encourages people to visit, walk and spend time in the heart of Morwell and creates a village atmosphere that appeals to residents and visitors alike. The project also rebranded Morwell as the Town of Gardens, based on the iconic Morwell Centenary Rose Garden.

“The revitalisation of Morwell's CBD has created a new sense of pride in the heart of town, as well as a fresh identity that brings Morwell into the twenty-first century,” Latrobe City Councillor, Graeme Middlemiss said.

“The facelift for Morwell will bring more people to shop at local businesses and visit such attractions as Latrobe Regional Gallery.”

The project included new street surfacing and paving, new public open space by creating 12 parklets and a community gathering space in Tarwin Street, complete with a shade structure, and café and casual seating. Modern technology has been introduced, with decorative lighting within parklets, free public WiFi and wireless mobile phone chargers integrated into street furniture. There is a pedestrian counter and LED street lighting that can be programmed to be dimmed or brightened. In the future, these lights may be fitted with motion sensors that will enable lights to brighten automatically when someone walks by.

The project was driven by the Future Morwell Committee, chaired by Cr Graeme Middlemiss with representatives from Morwell Traders, Advance Morwell, Morwell Community Recovery Committee and Latrobe City Business Tourism Association.

GRAC lures fitness fans by the thousands

More than 51,165 people used the \$57 million Gippsland Regional Aquatic Centre (GRAC), in the first three months of operation, from when it opened in March 2021.

The world-class swimming and leisure facility was officially opened by Victorian Minister for Regional Development Mary-Anne Thomas, Member for Eastern Victoria Harriet Shing and Latrobe City Council Mayor, Cr Sharon Gibson on 23 March, ahead of opening to the public on 25 March.

GRAC was the flagship project of the State Government's \$85

million Latrobe Valley Sports and Community Initiative and features the only indoor 50m pool east of Melbourne, along with eight lanes and 500 spectator seats.

In a regional first, a deep bore geothermal heating system reduces GRAC's carbon footprint and significantly decreases operational costs.

The YMCA managed centre also features: an indoor water play zone, two large water slides, a learn to swim pool, a café and retail precinct, and a 25m heated outdoor pool. There is also a warm water program

pool, spa, sauna and steam rooms, wellness centre, wet and dry change facilities, and gymnasium with group fitness rooms

GRAC was also funded by Sport and Recreation Victoria and Council, and is now managed by the YMCA on Council's behalf. Led by ADCO Constructions, the build provided an economic boost for local contractors, with more than 500 workers engaged in more than 10,000 hours of labour on-site.

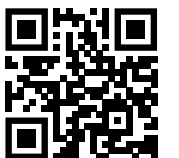


What is at GRAC?

- 8 lane 50m indoor pool
- 25m heated outdoor pool
- Indoor water play zone
- Two large water slides
- Learn to Swim pool
- Warm water program pool
- Spa, sauna and steam rooms
- Wellness centre (coming soon)
- Gymnasium
- Group fitness rooms
- Cafe and retail precinct
- 500 spectator seats
- Geothermal heating system
- Meeting room



For more info on GRAC, scan the QR code with the camera on your mobile device.





Hyland Landfill gas to generate renewable electricity and savings for the community

Using methane as a landfill by-product to generate electricity will not only benefit the environment but also save Latrobe City Council up to \$900,000 per year in electricity costs.

Council has installed a Biogas Generator (a gas engine) at Hyland Highway Landfill to use harvested methane to generate electricity.

Methane is produced as a natural product of decomposition at the landfill and is 25 times more damaging to the environment than carbon dioxide.

The biogas will be cleaned and dried, and be used to drive a 900 kW Jenbacher landfill gas-to-power engine instead of being flared off (destroyed).

The project means Latrobe City is at the forefront of Victorian councils adopting innovative waste management and renewable energy technologies.

"The Biogas Generator project has the capacity to offset 70% of Council's electricity demand, saving millions of dollars to Council over the life of the landfill," Latrobe City Council Mayor, Cr Sharon Gibson said.

"This project will reduce the environmental impacts of Council's activities and carbon footprint for Latrobe City Council. Although this technology is widely used in private waste management facilities, only a few councils are using similar energy technology."

Why invest in Latrobe City

Latrobe City is linked with Melbourne by the Princes Freeway (M1)

A dual lane highway is being constructed between Traralgon and Sale

≈ **2 hrs**

travel by train to Melbourne



1 of 4 Regional cities in Victoria



75,915

population total
**estimated*

Latrobe City has a skilled workforce, with health care, retail trade, education (both TAFE Gippsland and Federation University), public administration and construction being the biggest employers



High quality, appropriately zoned and competitively priced industrial land is available close to industry and conveniently located to the Princes Freeway

This land is available for manufacturing, industry and logistics

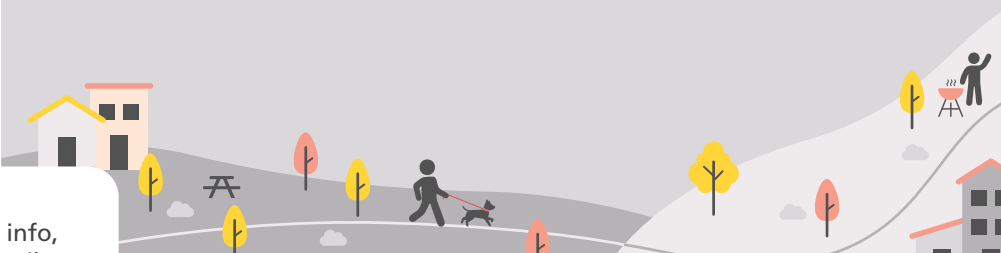
Established industry and access to high-capacity electricity



Supportive Local Government, with a Concierge service to assist in streamlining the approval processes



Latrobe City has an appealing lifestyle: affordable housing, close community, diverse retail and services, urban and rural living, and is close to mountains, sea and the Gippsland Lakes



For more info, view Council's Investment Roadmap: 2030 and beyond.



For more info on GRISS, scan the QR code with the camera on your mobile device.



Sports stadium scores for Latrobe City

The Gippsland Regional Indoor Sports Stadium (GRISS) in Traralgon has not taken long to put points on the board.

The grandest sporting venue in Victoria's east hosted national level netball games, a major basketball tournament and a travelling basketball competition within months of officially opening in late December 2020.

Sports fans are relishing the opportunity to see elite sport in Latrobe City, proving the value of the \$19 million redevelopment of the former Traralgon Sports Stadium, funded by the State Government.

The centre now features eight courts for ball sports, including a show court with 3000 retractable spectator seats, office space, training rooms, a cafeteria, social spaces, a gymnastics facility and more.

In late March, a crowd just over 2000 fans watched the Collingwood Magpies host the Adelaide Thunderbirds and Queensland Firebirds in a practice game for the Suncorp Super Netball league, as part of the Magpies on the Road tour.

GRISS Fast Facts

8 ball sports courts, 1 showcourt,
3000 spectator seats

Gymnastics facility

Basketball Victoria high performance hub

Home of GippSport – new office space

55,000 hours total worked on site (approx.)

85% local labour content

\$19 million redevelopment

The stadium was funded by \$17 million from the Victorian Government's \$85 million Latrobe Valley Sports and Community Initiative, administered by Latrobe Valley Authority, and \$2 million Sport and Recreation Victoria's Community Sports Infrastructure Loan Scheme.

A 12-month build led by Becon Constructions provided an economic boost for Latrobe City, with a host of local contractors engaged.



2020/21 Highlights

Community Grants, Sponsorship and Financial Support

- Council awarded community grants totalling \$666,654.36.
- Council gave sponsorship worth \$32,786.81.
- Provided \$1,782,000 through the Business and Community Support Package in recognition of the COVID-19 pandemic.

Business Support

- Waiver of fees and charges for Latrobe City owned and/or operated small to medium businesses that have previously been impacted by the restricted activities directions – Supported 427 businesses.
- Waive street trading and outdoor dining permit charges and health registrations from 1 July 2020 to 30 June 2021 – 103 registrations processed.
- Waiver of Planning Permit fees for commercial and industrial applications that fit Vicsmart Planning criteria. – 19 applications processed.
- Latrobe City Small Business Grant program – 3 rounds supported 79 businesses - a total investment of \$430,373.

Operational Services

- A 0% rate rise in 2020/21 and 1.5% in 2021/20.
- \$61.07 million in total Capital Works expenditure.

Community Support

- Waiver of charges for sporting and community groups using Council owned buildings/facilities – Estimated 164 groups supported.
- Waiver of venue hire charges for community groups – Estimated 50 groups supported.
- Community Grant Funding program – 2 rounds supported 78 Community groups – Total investment \$170,360.77.

Flood & Storm Response

- 3764 flood and storm related phone calls taken by Call Centre staff from 10 to 30 June 2021.
- 15 bins replaced from 10 affected flood properties.
- More than 640 secondary assessments for flood and storm impacted residents.
- 1700 people from 897 families registered with Council at information and relief centres at Traralgon and Yinnar.
- 81 kerbside collections of hard waste from properties impacted by the flood and storm. A total of 24 tonnes and 35 mattresses collected .
- 113 customers disposed of green waste for free at PineGro.
- 6 free transfer station visits.
- Council provided a triage and referral program to link people with service providers.

Events, Arts and Tourism

- Summer Sessions – three outdoor live music events in Victory Park
- Re|Collection – a community dance workshop presented in Victory Park
- LPA Online – music, dance and performance presented online while the theatre was closed
- Da Vinci Machines Exhibition – major event with over 9,500 attendees
- LRG Live – a series of performance events at the Gallery
- The Lane – establishment of a dedicated children's art play space at the Gallery
- Suncorp Super Netball League, Round Robin 3 game practice matches
- Melbourne Victory W League in season game
- Morwell International Rose Garden Festival

Major Projects

- Gippsland Regional Indoor Sports Stadium (GRISS), Traralgon
- Gippsland Regional Aquatic Centre (GRAC), Traralgon
- Monash Reserve Upgrade
- Morwell Recreation Reserve Changerooms refurbishment





LatrobeCity
a new energy

LATROBE CITY COUNCIL

Phone 1300 367 700

Post PO Box 264, Morwell, 3840

Email latrobe@latrobe.vic.gov.au

Website www.latrobe.vic.gov.au

SERVICE CENTRES AND LIBRARIES

Morwell

Corporate Headquarters

141 Commercial Road, Morwell

Morwell Library

63-65 Elgin Street, Morwell

Moe

Moe Service Centre and Library

1-29 George Street, Moe

Traralgon

Traralgon Service Centre and Library

34-38 Kay Street, Traralgon

Churchill

Churchill Community Hub

9-11 Philip Parade, Churchill

*To obtain this information in languages
other than English, or in other formats,
please contact Latrobe City Council
on 1300 367 700.*