

LATROBE VALLEY

Defence Alliance

CAPABILITY PROFILE



Background

The Latrobe Valley has a long history of engineering excellence built on a significant local industry of coal-powered electricity generation; open cut mining operations, oil and gas exploration and extraction, pulp and paper manufacturing, agribusiness and associated support industries.

These activities continue to shape the industrial landscape and forge a region built on innovation, specialist skills, resource utilisation, project delivery and effective environmental management. A key strength of the region is the capability of the local workforce and its' specialised engineering knowledge, skills and experience.

Latrobe City, one of Victoria's four major regional centres, covers 1,422 square kilometres and is located approximately 150 km east of Melbourne, and is accessible to national and international markets via existing transport infrastructure. Specialist businesses provide industrial manufacturing and engineering services to meet the needs of major industrial organisations.

The Latrobe Valley Defence Profile has been established to showcase the world-class engineering and manufacturing capability of industry in the Latrobe Valley. The intention of this publication is to provide an insight into the industrial capability of the region. Latrobe City Council developed the profile with support from the Australian Defence Alliance (Vic).

The profile is available online via Council's website at www.latrobe.vic.gov.au/defence





Latrobe Valley Industry Capabilities

Today's industry expertise represents a journey that commenced in 1894 with the discovery of brown coal in the area. Businesses that enabled the growth of the energy sector in Victoria exemplify the specialist knowledge and skills that combine to deliver customised solutions that are tailored to meet the needs of the client. Critical to this is the understanding of the need for quality, precision, responsiveness, reliability and accountability, and their impacts on a project outcome.

The specialist businesses showcased within this publication represent a snapshot of skills and capability available and ready to support the Defence supply chain. Project-based design, engineering, manufacturing and maintenance service are what this region is known for and built upon.

Latrobe City is a significant driver of the Victorian economy, contributing over \$4.78 billion in Gross Regional Product.

The region's engineering and manufacturing sector supplies major industry, including:

- AGL Loy Yang A 2210 Megawatt power station and open-cut brown coal mine
- Alinta Energy Loy Yang B 1000 Megawatt power station
- Energy Australia 1480 Megawatt power station and open-cut brown coal mine
- Australian Paper Maryville Mill
- Mahindra Aerospace, only commercial aircraft manufacturer in Australia
- RAAF Base East Sale, home to approximately 700 defence personnel
- ExxonMobil's Longford gas and crude oil plants
- ExxonMobil's 23 offshore platforms and installations in Bass Strait.

Our skilled tradespeople and workforce has contributed to building the nation with the rollout of road projects, establishment of power generation facilities as well as water, rail and gas projects. A network of business services offer expertise in the design and development of specialist equipment for the mining and major construction sectors. Our workforce understands heavy industry fabrication requirements from start to finish - from commissioning of specialist equipment to providing assistance and service to better manage equipment fatigue.

Industry in the Latrobe Valley are the innovators, designers, engineers and manufacturers at the forefront of supporting Australia's mining and resource infrastructure development and ongoing operations.



GIPPSLAND

90 MINS VIA M1

MELBOURNE

Port Phillip Bay

M1

90 MINS

Phillip Island

Wonthaggi

Leongatha

Inverloch

Foster

Wilsons Promontory

90 MINS

75 MINS

Mt Baw Baw

Walhalla

Erica

NEWBOROUGH

TRARALGON

MOE

MORWELL

CHURCHILL

Rosedale

Sale

Ninety Mile Beach

40 MINS



Australian Defence Alliance Foreword

Amid a backdrop of significant Commonwealth Government investment in the development, growth and sustainment of Australia's sovereign industrial base, opportunities abound to promote the longstanding technical capabilities that exist across the nation.

The Latrobe Valley, with its deeply ingrained excellence in manufacturing, fabricating, welding and skilled engineering, and its rich history supporting the resources sector, is a classic tale of generational learning and pride. It is a regional cluster of excellence in the very skills which will enable Australia to establish integrity and longevity across its sovereign and fundamental industry capabilities, ensuring not only a stronger, more resilient national economy, but also ensuring a more resilient and self-reliant national security posture. Thus it is with pleasure, and in support of the transition of the region's businesses into a burgeoning defence industrial base, that Australian Defence Alliance Victoria (ADA-Vic) and the Latrobe City Council have established a partnership demonstrating the commitment of both organisations to ensuring the continued growth and success of one of the nation's most skilled engineering hubs. Through this partnership, 24 Latrobe Valley Regional businesses have taken up membership with ADA-Vic to highlight and

promote the deeply experienced capabilities resident throughout the region. From ADA-Vic they receive a highly-experienced and professional level of strategic guidance and support; networking across domestic and global supply chains in defence and dual-use industries; and advocacy into State and Federal governments on a host of issues impacting the region as a whole. Ensuring the commercial success of the small-to-medium-enterprise (SME) businesses resident in the Region is the focus, and the partnership ensures they are provided with the tools required to be attuned to opportunities in global supply chains and postured to be as competitive as possible. ADA-Vic is proud to enter into this long-term, sustainable relationship with Latrobe City Council and the participating businesses, and we look forward to ensuring the expertise and excellence they have brought into the resources, energy, manufacturing, biotechnology, cyber and transportation sectors (to name just a few) continues to be built upon and diversified across the defence industry in Victoria, nationally through the ADA partnership, and internationally through global supply chains.



**AUSTRALIAN
DEFENCE
ALLIANCE**

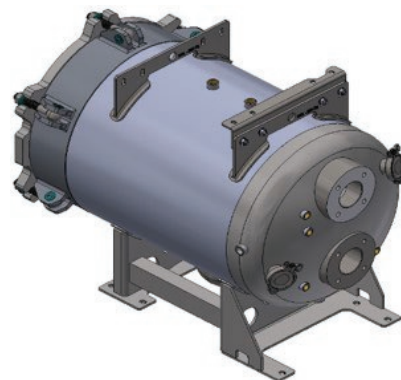
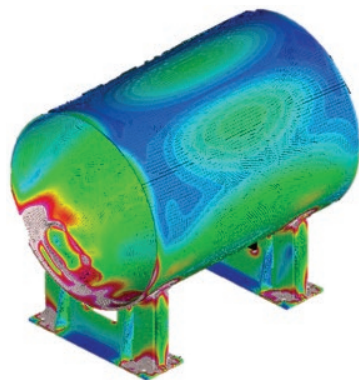
Australian Defence Alliance (ADA) is Australia's largest independent, professional advocacy body representing the policy and strategic governance needs of Small-to-Medium Enterprise (SME) businesses in the defence and dual-use industries. ADA represents 1100+ SMEs nationally through its partnership between Australian Defence Alliance Victoria (ADA-Vic), the Defence Teaming Centre in SA, and the Henderson Alliance in WA. ADA works at both tactical and strategic levels to ensure all opportunities are realized, and all obstacles examined, in the quest for increased global market share by Australia's dual-use and defence SMEs. To learn more about the ADA, take a look at www.Australiandefencealliance.org.au

Contents

Adra Group	2
AsClear Pty Ltd	3
Balmoral Hill Pty Ltd.....	4
BMC Welding and Construction Pty Ltd.....	5
Delfab Engineering	6
Federation University	7
Firmins Lane Engineering.....	8
Genertech	9
Gippsland CNC Cutting	10
Hardchrome Engineering Pty Ltd	11
Hydro Australia Pty Ltd	12
JB I Engineering Pty Ltd	13
PFG	14
Latrobe Regional Airport.....	15
Latrobe Valley Enterprises.....	16
Lendlease Services Morwell	17
O&M Operations and Maintenance	18
Pro Draft Pty Ltd	19
Safetech	20
Stable Engineering	21
TAFE Gippsland	22
Trustweld Engineering Pty Ltd	23
Victorian Testing and Inspection Services.....	24
Vincent Painting Contractors	25







Adra Group

Company Overview

Adra Group is a multi-discipline international engineering services company with offices across Australia and South East Asia. Adra Group take the time to understand technical challenges and deliver clever practical solutions.

Capabilities

- Design engineering and drafting
- Detailing
- Drawing office management
- Advanced engineering analysis
- Modelling and animations
- Scanning and as-built surveying
- Asset management
- Expert witness services

Discriminators

- Finite element analysis (FEA)
- Direct to additive manufacturing/ 3D printing
- 3D scanning

Key Customers/Partners

- Liquip for Holmwood Highgate (purchaser), Rheinmetall Defence (prime) and Australian Defence Force (purchaser). Vessel design, analysis and certification
- Adani
- Rio Tinto
- Fortescue Metals Group
- Refuel International
- Alinta
- BAE
- Boeing

Quality Standards and Other Accreditations

- ISO 9001:2015 certified by PWC
- Environment and Health and Safety Management Systems certified to the latest ISO standards by PWC

Contact Details

Level 2, 30 Kay Street
Traralgon VIC 3840

+61 3 5173 7600

6/178 Great Eastern Highway
Ascot WA

+61 8 9479 5253

111 Hoang Hoa Tham Street Ward 2,
Vung Tau City Vietnam

www.adragroup.com.au





AsClear Pty Ltd

Company Overview

AsClear is an industry leader in providing in-house and on-site specialised services in abrasive blasting and coating of structural steel and pipelines, as well as concrete repair, remediation and sealing.

Capabilities

- Industrial painting/coatings
- Asbestos removal
- Asbestos storage

Discriminators

- Transportable abrasive blasting/transportable high-build epoxy application
- Asbestos removal and immediate re-coating
- ARO (abrasion resistant overlay)
- Pipe coating machine – 100mm – 1200mm in diameter; up to 18m in length
- Jet fuel pipeline specialisation
- A-class removal licence

Key Customers

- ExxonMobil
- Viva Energy
- APA Group
- Inductabend
- Quality Site Welding
- LendLease
- Wood Group
- National Australian Pipelines
- Ferguson Civil
- John Beever
- BAO Australia
- Edgen Murray
- East Sale RAAF Base Asbestos Removal

Key Partners

- Deakin University
- Universal Corrosion Control
- DENSO
- Dulux
- International Paints
- Specialty Polymers Coatings
- Australian Corrosion Association
- Painting Contractor Certification Program
- NACE International

Quality Standards and Other Accreditations

- ISO 9001:2015
- AS/NZ 4801
- Asbestos Removal License– H03/01620

Contact Details

Patrick Sleswick
147 Firmans Lane
Hazelwood North VIC 3840
(03) 5133 6200
patrick@asclear.com.au
www.asclear.com.au





Balmoral Hill Pty Ltd

Company Overview

BHPL provides Project Governance and Project Planning, Scheduling and Cost Controls for SMEs using industry standard Critical Path scheduling software.

The company has been providing highly skilled and experienced full-service project management support to clients worldwide for more than forty years, with over 70 years of cumulative defence and government project delivery experience.

Capabilities

- Consulting/ contracting/ mentoring
- Planning, cost controls and resource scheduling
- Project governance and controls
- ASDEFCON, development of CASG project bid
- Earned value and earned schedule
- Up-to-date iso accreditation facilitation and assessment to state laws for quality management and OHS&E management, with regard to the impact on project scheduling
- Peer reviews
- Extension of time claims
- Assurance reviews of schedules

Discriminators

- 70 years cumulative defence knowledge and experience
- SME focussed value for money

delivery

- Subject matter experts in WBS and EV for ISO 21500 TC 258 committees and standards Australia MB-012 and conform to the project management standards
- AS4335, AS4817:ISO 21508:2018
- 1 of 10 in Australia who are certified Fellows of Guild of Project Controls (out of 1000s of companies)
- Member of project governance and cost symposium

Key Partners

- Scope Works
- Meta Data
- Vidotto group of companies
- Project Planning and Learning (NZ)
- Eyedealtec (USA)
- Stottler Henke (USA)

Key Customers

- ASC Collins Class Submarine Construction and Commissioning – Project Director (Construction)
- Jindalee over the horizon radar for Telstra Defence Systems
- RAAF - Orion maintenance at 492 Squadron
- RAAF - HS748 maintenance, East Sale
- RAAF - Hercules C130C and C130H models maintenance for 503 wing
- RAAF - F-111C and R3, R4, R5 maintenance for 501 wing
- Army Technology and Engineering Agency

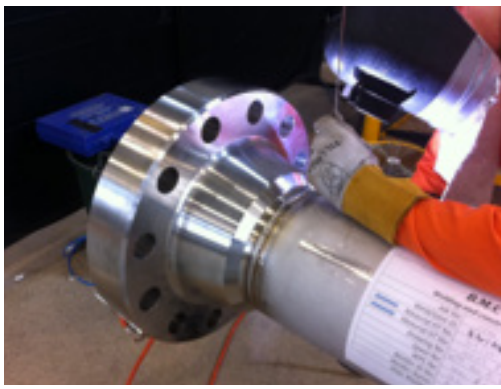
- DMO – Air 87 planner and scheduler ARH
- DMO – Tactical fighter planner and scheduler
- Sea 1800 (non-disclosed clients)

Quality Standards and Other Accreditations

- Australian submarine corporation award for major role in success in delivering HMAS Collins on time and budget
- Certificate for services on F-111 schedules
- 50 Year membership of Australian Computer Society
- Defence industry study course
- Foundation members of guild of project controls
- Foundation members of planning engineers

Contact Details

Dr Raphael M. Düa
 CEO and owner
 Suite 10 / 76 Hotham Street
 Traralgon VIC 3844
 phone +61 418 531 111
 raf@balmoralhill.com.au



BMC Group

Company Overview

BMC Group (BMC) is a privately owned company located in Morwell Victoria, which includes:

- BMC Welding & Construction
- BMC HV, Electrical & Instrumentation
- BMC Civil

The BMC Group of companies deliver a raft of mechanical, HV/LV electrical and civil services underpinned by it's quality and safety standards.

As a single point of contact, BMC can offer our client the benefits of many years experience across a range of industries to provide a turnkey solution for any work environment.

Capabilities

- Carbon and exotic steel fabrication
- Piping services including off-site fabrication
- Mechanical equipment maintenance
- Electrical systems maintenance
- Civil works including concrete and excavation
- Scaffolding services
- Machining

Discriminators

- In-house capability to facilitate large scale infrastructure upgrades and maintenance projects, with specialised trade skills, project managers and plant equipment such as excavators, graders, bulldozers to facilitate an

entire project

- Expertise in highly corrosive and marine environments
- Complex weldments and assemblies (size and location)
- Weld procedure development and proving
- High-pressure pipework welding
- Sub-surface spool fabrication and installation
- Dissimilar metal fusion/welding
- Construction specialist, offering turnkey service across mechanical, electrical and civil divisions

Key Customers/Partners

- Alinta - mechanical and electrical maintenance
- ExxonMobil - offshore, LIP and LFG high voltage electrical maintenance
- Ausnet - transmission and distribution primary maintenance
- APA Group - mechanical and electrical service agreements
- EnergyAustralia - high voltage electrical maintenance
- AGL - mechanical and high voltage electrical maintenance
- Engie - high voltage electrical maintenance
- Opal - high voltage electrical maintenance
- DELP - Road
- Lochard Energy - mechanical and civil service agreements
- White techniques
- Zinfra Group
- Monodelphous

Quality Standards and Other Accreditations

ISO Accredited

- ISO 45001 OHS certification
- ISO 14001 Environmental certification
- ISO 9001 Quality certification

Contact Details

Mal Stasinowsky
Managing Director

John Monteleone
Managing Director

Damien Kiss
Mechanical Operations Manager

Martin Camilleri
Electrical Operations Manager

Christopher Monteleone
Mechanical Superintendent/Project Manager

6 Minchington Road
Morwell VIC 3841

Phone (03) 5135 6211

www.bmcgroup.com.au





Delfab Engineering

Company Overview

Delfab specialise in the manufacture of all types of process equipment. They service a diverse range of industries including power, mining, gas and oil, and all forms of government infrastructure across Australia.

- Specialised high-quality welding using various processes covering all material types
- Manufacturing a wide range of carbon, stainless and alloy components in both heavy and light sections
- Plate formation, pressing and section rolling, bending, drilling, punching and milling

Capabilities

- Plate pressing
- Steel formation
- Steel fabrication
- Laser cutting
- Blasting and painting
- Process piping

Discriminators

- Two equipped workshop facilities
- Dual - 20 ton overhead crane
- Plasma cutting Truedge 3 XPR Connect - plasma cutting machine with pipe processing capabilities

Key Customers

- AGL
- Downer
- Energy Australia
- Australian Paper
- Alinta Energy
- Beach
- Saputo Dairy Australia
- Victorian Government

Key Partners

- Surdex Steel
- Midway Metals
- Boltco
- GB Galvanising
- Hardox Wearparts

Quality Standards and Other Accreditations

- ISO 9001:2015

Contact Details

Michael Calleja

14 Della Torre Road

Moe VIC 3825

(03) 5126 1425

michael@delfab.com.au

www.delfab.com.au





Federation University

Company Overview

With campuses in Ballarat, Gippsland, Berwick, the Wimmera and Brisbane, Fed Uni provides undergraduate and graduate-level research, education and consultancy services specialising in:

- Cybersecurity: advanced analytic techniques for cyber-crime and big data issues
- Engineering: additive manufacturing (3D metal printing), carbon technology research, mechatronics engineering, energy and renewables
- IT: novel pattern-matching techniques, communications and signal processing, forensic data digital imaging
- Health: digital mental health and wellbeing, sport and injury prevention
- Agriculture/climate ecology: environmental practice and investment, animal-human health, climate ecology and diagnostics, bushfire and natural disaster recovery

Capabilities

- R&D in new energy (hydrogen)
- Geo-hydrological (climate change)
- Bio-mechanical / human performance
- Additive manufacturing – carbon technology (activated carbon, carbon fiber)
- Sensor technology (processing and ai)
- Digital Innovation

- Geospatial visualisation and mapping.
- Internet commerce security, threat profiling, forensics, fraud detection, infrastructure security
- Mechatronics and reliability engineering

Discriminators

- Recipient of three successive grants from US Airforce (AFOSR/AOARD)
- Multi-location Aboriginal Education Centre (Gippsland, Berwick, Ballarat, Wimmera)
- \$2.3m carbon technology research centre
- Charchar lab – genomics research
- Internet commerce security laboratory (key partners Victorian Government, Westpac and IBM)
- IT research centres: multi-media and forensic data analysis (AFP) - intel and national security
- Kinaway - indigenous chamber of commerce partnership
- Technology parks - Ballarat Technology Park; Gippsland Hi-Tech Precinct

Key Customers/Partners

- US Airforce
- AFP
- CSIRO
- Victorian Government
- Department of Industry,

Innovation and Science

- Defence Science Institute
- Advanced Manufacturing and Growth Centre (AMGC)
- Energy Australia
- AGL
- Downer Group
- J Power
- Opal Australian Paper
- ASIC
- Rio Tinto
- Telstra
- IBM
- ACi

Quality Standards and Other Accreditations

- RTO with Australian Skills Quality Authority (ASQA)
- Registered with Tertiary Education Quality and Standards Agency (TEQSA)

Contact Details

Geraldine Jones – Manager
Business Partnerships Unit
PO Box 3191
Gippsland Mail Centre VIC 3841
(03) 5122 8477
g.jones@federation.edu.au
www.federation.edu.au





Firmins Lane Engineering

Company Overview

Provides machining, fitting and fabrication services. With decades of experience, we aim to supply our clients with quality work, supplied on time and within budget.

- Light to heavy machining
- Gearbox refurbishment
- Valve overhauls
- Spare parts manufacture
- Trade labour hire
- Project management

Capabilities

- Mecof CNC bedmill (6300 x 1200mm)
- TUDA Lathe (7000mm between centres)
- Vertical borer (4,500mm max turning diameter and 2000mm under the tool, 36t weight capacity)
- Overhead cranes (1 x 20t and 1 x 10t – 10m clearance under the hook)
- 200t roll frame press

Discriminators

- Large vertical borer (4500mm max turning diameter, up to 40 tonne on chuck)
- Portable clean room conditions (6.3m x 3.5m x 3.6m high)
- Turbine control valves
- 24/7 operations

Key Customers

- Origin Energy
- AGL
- Alinta
- Toshiba
- GE
- Snowy Mountain Hydro
- Siemens

Key Partners

- AsClear
- Gippsland Bearing Supplies
- RTL Boltco
- Vulcan Engineering Steels
- Voestalpine HPM
- Bob Haslam Engineering
- Australian Steel
- Harvest Engineering
- AMAC Alloys
- Overall Forge
- ACPL

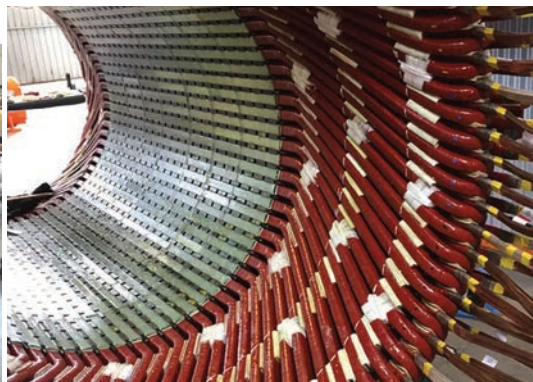
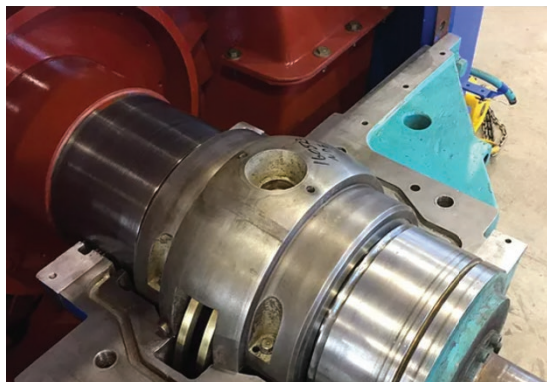
Quality Standards and Other Accreditations

- AS/NZS ISO 9001:2015
- ISO 45001:2018

Contact Details

Rick Garratt
145 Firmins Lane
Morwell VIC 3840
(03) 5136 9800
www.flengineering.com.au





Genertech

Company Overview

- Electric motor/generator repair and overhaul business in the Latrobe Valley, with over 15 years' experience.

Capabilities

- High voltage motor rewinds and testing
- Repairs in low, medium, high rotating electrical equipment: DC motors and generators, AC synchronous machines and AC electric motors
- Experience across all major electric motor OEMs

Discriminators

- Mechanical and electrical testing - 12v to 11000v, 0.18kW to 8500 kW
- Certified ANZEx service facility: authorised to overhaul rewind and repair hazardous area (ex) electric motors
- 2000m² under roof workshop - lifting capacity of 100 tonnes - clearance of 11m under hook

Key Customers

- Toshiba
- GE
- Snowy Hydro
- Energy Australia
- AGL
- Australian Paper
- Downer
- Alinta
- Liberty One Steel
- Siemens
- Bluescope Steel

Key Partners

- Statewide Bearings
- Associated Gaskets
- ABB Limited
- Weg Australia
- Regal Beloit

Quality Standards and Other Accreditations

- ISO 14001:2015
- ISO 9001:2015
- AS 4801:2001
- ANZEx 17.2002

Contact Details

Robert Mizzi
Managing Director
6 McQuade Street
Morwell VIC 3840
03 5174 5997
rob@genertech.com.au
www.genertech.com.au



Gippsland CNC Cutting

Company Overview

Manufacturer and custom sheet metal fabricator with a specialisation in rapid delivery throughout our plate stock range.

- CNC laser cutting
- CNC plasma cutting
- CNC oxy/profile cutting
- CNC pressbrake folding
- Welding
- Drilling and tapping
- Pipe bending
- Sheet rolling

Capabilities

- 4kW lvd fibre laser 4mx2m - up to 20mm mild steel
- LVD pressbrake 220t 8 axis cnc 4.3m long
- PCS5000hd 24m rail twin head - up to 30mm mild steel
- 3D CAD modelling

Discriminators

- Continuous 300 tonne+ stock onsite
- Overnight plate processing and delivery
- Plate cutting up to 20m in length

Key Customers

- LendLease
- SafeTech
- Yallourn Energy
- Australian Paper
- Kiel Industries
- TradeWeld
- JBI Engineering

Key Partners

- Selection Steel
- Bluescope Steel
- Midway Metals
- Surdex Steel

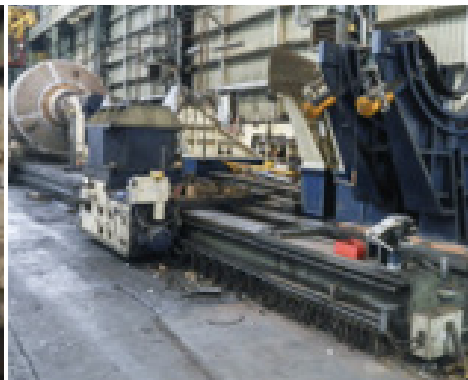
Contact Details

Alan Cuthill

3H Miners Way
Morwell VIC 3840
(03) 5134 1007

sales@gippslandcnccutting.com.au





Hardchrome Engineering Pty Ltd

Company Overview

Hardchrome Engineering has offered a wide range of engineering services to various Australian industries for the past 40 years. Without compromising on product and service quality, we offer competitive turnaround times and feasible pricing to ensure excellence in our engineering solutions

- Hardchrome plating
- Grinding and machining
- Nickel plating
- Hydraulic component repair and maintenance
- Polymeric, metallic and composite coating
- Heat treatment and nitriding

Capabilities

- CNC machining
- Hydraulic presses

Discriminators

- Signature reduction coatings
- Multiple cylindrical grinding machines (up to 4m long and 780mm diameter)
- Turbine lathes (10m) and hone (4m)
- Vertical and horizontal furnaces (2m deep)
- Largest shop-blast painting and machining capabilities in Australia
- Significant research and development investment – in-house and academia

Key Customers/Partners

- RAAF
- RAN
- BAE
- Thales
- ASC
- DST(G)
- BHP
- Rio Tinto
- Glencore
- Joy Global
- Energy Australia
- Hydro
- AGL
- CSIRO
- Monash
- RMIT
- Swinburne

Quality Standards and Other Accreditations

- ISO 9001:2015
- CASA Part 145 approved maintenance organisation

Contact Details

Andrew Dugan
Managing Director
175 Wellington Road
North Clayton VIC 3168
0419 371 591
andrew@hardchrome.com.au
www.hardchrome.com.au





Hydro Australia Pty Ltd

Company Overview

Hydro Australia is the Australian division of the Hydro Group of Companies (head office is in Chicago, Illinois, USA). The company is recognised as the largest independent pump repairer in the world.

- Removal, overhaul, refurbishment, upgrading and reinstallation of pumps, commissioning with full engineering support

Capabilities

- Engineering solutions improving upon energy savings and cost efficiency (vs pure part replacement)
- Expert engineering analysis of pumps and pumping systems
- Reverse engineering solutions
- Solution-based fault finding

Discriminators

- 3-D laser scan roamer arm
- Sensor-based condition monitoring (vibration, pressure, speed, temperature) and reporting and analysis
- High speed laser cladding
- Insitu testing of pumps
- Dynamic balancing to high tolerance
- In-house engineering expertise and resources (4 engineers)
- Significant global reach-back via the Hydro Group global footprint

Key Customers

- AGL
- Energy Australia
- Origin Energy
- Mobil
- Esso
- Woodside
- Shell
- Siemens
- Rio Tinto
- Australian Paper
- Downer Engineering
- Melbourne Water
- Vermilion Oil and Gas

Key Partners

- Hardchrome
- Australian Surface Technologies
- John Crane Seals
- Flow Serve Seals

Quality Standards and Other Accreditations

- ISO 9001:2015
- OHSAS 18001:2007
- AS/NZS 4801:2001

Contact Details

Michael Cooper

8 Minchington Road
Morwell VIC 3840

(03) 51 650 390

0402 844 683

michael@hydroAustralia.com.au

www.hydroAustralia.com.au





JBI Engineering Pty Ltd

Company Overview

JBI Engineering is a professional engineering and civil services company providing a wide range of engineering and construction services across Victorian industry sectors, and backed by over 30 years of experience.

- Fabrication and installation structural steel components, including gantries
- Mechanical/piping fabrication and installation
- Mechanical maintenance/shutdown works
- Fabrication and installation of steel panels, equipment, handrails, platforms, staircases, walkways, pipe bridges, tanks and vessels, etc.
- Sheet metal and insulation works
- Excavation and civil works including all aspects of commercial and industrial concreting and structural concreting
- Design and construct

Capabilities

- Shutdown support, including supply of safety advisors, trades, supervisors, tools and equipment
- Maintenance of multinational clients, large-scale plants and buildings
- Design and construction of infrastructure and structures
- Boiler making, steel fabrication, welding (mechanical, structural and sheet metal), carpentry
- Commercial and industrial projects such as offices, warehouses, terminals and factories
- Project management

Discriminators

- One-stop-shop for design, building, and project management - gain cost / time efficiencies
- All projects completed to strict quality assurance guidelines
- Highly skilled and knowledgeable workforce
- Projects delivered on time and on budget

Key Customers

- Latrobe City
- Downer
- Australian Paper
- Gippsland CNC Cutting
- Gippsland Water
- AGL
- Alinta Energy
- CRRC
- Cross Yarra Partnerships
- Refuge Homes

Quality Standards and Other Accreditations

- ISO 9001:2015 DNVGL
- AS/NZS 4801:2001 DNVGL
- ISO 14001:2015 DNVGL
- Australian Steel Institute Member

Contact Details

John Bailey

9-15 Elizabeth Terrace
Morwell VIC 3840

(03) 5133 7088

admin@jbiengineering.com.au
www.jbiengineering.com.au



PFG

Company Overview

PFG are a privately owned company with over forty years of history producing innovative solutions to a variety of industries, including Defence, locally, nationally and around the world. Our head office is based in Tasmania, Australia with advanced manufacturing production in Victoria, South Australia and Tasmania

Capabilities

- Rotational plastic moulding
- Custom plastic fabrication
- Custom product design, development and manufacture
- Conductive polymer product builds
- 3D printing
- CNC routing
- Waterjet cutting
- Compostable toilets
- Fuel tanks
- Marine and land-based aquaculture products
- Materials handling and safety
- Packaging and transport materials
- Steel fabrication and finishing
- Vacuum forming
- Food grade pallets and storage solutions
- Plastic hoppers and bins
- Playgrounds
- Recycled and waste bins

Discriminators

- Expert knowledge in the application of polymers to solve industrial problems
- In-house industrial design and tool fabrication to transform your idea into a finished product
- In-house recycling facilities to capture and minimise waste as well as providing a disposal option, closing the life cycle loop
- The largest range of plastic pallets in the Southern Hemisphere
- A diverse range of proprietary polymer products ranging from bins and spill bunds through to fuel tanks and compostable toilets

Key Customers

- Thales
- Downer
- Serco Asia Pacific
- QLD Police
- WA Department of Fire and Emergency Services
- AGL
- Engie Australia
- Iplex
- Opal Australian Paper
- Arnotts
- Tassal
- Gippsland Water
- Vicparks
- City of Ballarat

Key Partners

- ICN
- Rhinoplay
- Dainichi Japan
- Tasmania Maritime Network
- University of Tasmania
- Latrobe City Council

Quality Standards and Other Accreditations

- ISO9001-2015 Certified
- Certified AS/NZS 1546.2
- Member Rotational Moulders Association Australasia
- Member Gippsland Food and Fibre Association

Contact Details

Peter Ceeney
Business Development Manager

87 – 93 Tramway Road
Morwell 3840

0438 463 328
03 5135 3900

peter@kielindustries.com.au

www.kielindustries.com.au

www.pfg-group.com.au

www.neweratanks.com.au

www.rotaloo.com.au





Latrobe Regional Airport

Company Overview

Latrobe Regional Airport is home to Australia's only commercial aircraft manufacturing facility (Mahindra/ GippsAero's Airvan products)

- 100 Hectares of multi-use land available
 - Greenfield - 80 hectares
 - Services - 20 hectares
- Project management
- Capacity for autonomous vehicle testing
- Regional aerial fire-fighting services base
- Part of the latrobe city aerospace precinct - aviation, high tech, education and research

Capabilities

- Sealed runway - 1430m in length and 23m wide
- Pilot activated lighting (PAL)
- Precision approach path indicators (PAPI)
- Radio navigation aid, non directional beacon (NDB)
- GPS approaches
- Aviation fuel, AVGAS and JET A1 available

Discriminators

- Owned by Latrobe City Council - designated development zone
- Experience managing multiple tenants
- Hub for emergency services operations
- Strong academic partnerships

Key Customers

- Mahindra/GippsAero (120 employees on site)
- LV Airframes and welding
- Ambulance Victoria - helicopter ambulance and rescuer base
- Department of Environment, Land, Water and Planning
- East Coast Aviation and Rudi's Aero Engines
- Bureau of Meteorology
- Latrobe Valley Aero Club
- Aerial Extras
- Latrobe Valley Liteflight

Key Partners

- Airservices Australia
- Civil Aviation Safety Authority (CASA)
- Latrobe City Council

Quality Standards and Other Accreditations

- Civil Aviation Safety Authority (CASA) registered airport #007 (100% score on 2018 audit)
- Australian Airports Association Airport of the Year (2008)
- 100% CASA current regulatory approval

Contact Details

Marc Grant
73 Airfield Road
Morwell VIC 3840
PO BOX 264
Morwell VIC 3840
0409 436 289
marc.grant@latrobe.vic.gov.au



Latrobe Valley Enterprises

Company Overview

Latrobe Valley Enterprises are a not-for-profit social enterprise servicing a national customer base, with the specialty of signmaking for challenging environments, operating since 1967.

A leader in creating opportunities for people with disabilities to thrive through meaningful and sustainable employment and can assist organisations to meet the requirements of the Social Procurement Framework.

Partnering with 3M as a diamond certified supplier (12 years replacement guarantee) of printed substrates. As a 3M partner we also have the opportunity to provide the 3M certified Graffiti Removal service.

Capabilities

- In-house graphic design
- High-vis and highly reflective signage
- Custom labels and signage, including stainless steel, aluminium and flexible substrates (plastic/acrylic/fabrics)
- High volume UV resistant digital printing output (50m p/hr - only one in Australia)
- Safety and warning signs
- Road and traffic signage
- Carpark signage and line-marking
- Name badges and desk bars
- Industrial engraving and etching services (combined with both if required)
- CNC cutting

- Braille signs
- Vinyl lettering
- Laser cut signage for asset/equipment tagging

Discriminators

- High volume UV resistant digital printing output (50m p/hr - only one in Australia)
- Industrial engraving and etching in one sign
- Social enterprise employing 84 people with disabilities
- The only social enterprise in Australia manufacturing industrial signage
- The only social enterprise with 3M diamond certification and finsbury green environmental star-rating in Australia

Key Customers

- Federal and State Government Departments
 - Services Australia
 - Department of Environment, Land, Water
 - Department of Justice
 - Victorian Government
- Australia's largest power generators
 - AGL
 - Alinta
 - Energy Australia
- Large Metro and Regional Hospitals
- Universities and schools Australia wide
 - Federation Uni
 - Melbourne Uni
 - Tafe Gippsland

- Water boards, City and Shire Councils:
 - Gippsland Water
 - Melbourne water
 - Southern Rural Water
- Victorian state-wide Telstra contract
- Waste management facilities
- Fire and ambulance services

Key Partners

- 3M
- Marriot Environmental Services
- New Start (Indigenous Civil Construction)

Quality Standards and Other Accreditations

- ISO 9001:2015 - Quality Management System
- ISO 14001:2015 - Environmental
- ISO 45001:2018 - OHS
- Social Traders Certified
- 3M Diamond Certified
- Finsbury Green Star Rated

Contact Details

Wendy Bezzina

547 Princes Drive
Morwell VIC 3840

(03) 5134 1555
0409 785 045

www.lve.com.au
wendy@lve.com.au





Lendlease Services Morwell

Company Overview

Lendlease Services Morwell has been in operation for over fifty years in the Latrobe Valley and is a specialist engineering, construction and asset management contractor, providing services to the roads, water, power, industrial resources sectors.

- Rigging and scaffolders
- Boilermakers
- Pressure welders
- Fitters
- Electricians
- Truck drivers
- Specialist welders
- Schedulers
- Planning works coordinators and supervisors

Capabilities

- Pressure piping in stainless steel, carbon steel and alloys
- Thin wall stainless steel piping and tubing.
- Pressure vessels to AS1210 and AP1650 thin and heavy wall tanks
- General structural steel and ducting
- Aluminum and exotic metal fabrication
- MMAW, MIG, TIG and STT welding machines
- Plate rolls
- Brakes press
- Plasma cutters
- Sheetmetal folders
- Stress relieving machines
- Hydrostatic testing units
- Pressure recorders

Discriminators

- 5 x 20T overhead cranes
- 4000m² + under roof workshop space
- 7,000m² + of laydown area
- Rapid project execution (six to twelve weeks) to include pre-planning, resourcing and delivery
- Resourced to pay outgoings prior to receiving client payments
- Source all projects through locally procured materials
- Reach back into Lendlease Global's technology, machinery and intellectual property

Key Customers

- Engie
- AGL
- Energy Australia
- Australian Paper
- Lendlease Engineering

Key Partners

- LVI Industries
- Ausworkwear
- Blackwoods
- HRL
- Coates Hire
- Hip Pocket Morwell
- Metalcorp
- SandS Equipment Hire
- Surdex
- Total Tools
- Vincents Painting
- Weldspot / BOC
- Wurth Australia

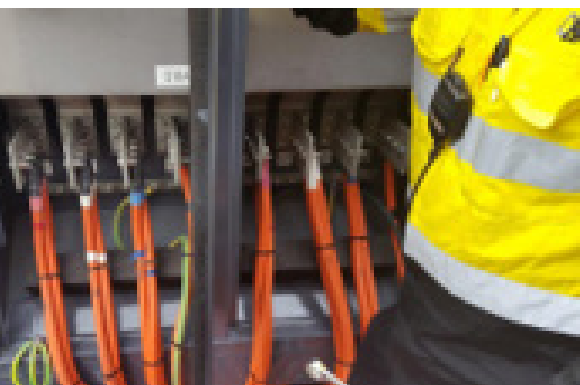
Quality Standards and Other Accreditations

- Welding Technology Institute of Australia (WTIA) Corporate Membership

Contact Details

Chris Row
Operations Manager
60-64 Madden St
Morwell VIC 3840
PO Box 285
Morwell VIC 3840





O&M Operations and Maintenance

Company Overview

Engineering asset management, operations and maintenance company in the industrial sectors.

- Electrical and mechanical engineering
- Electrical, instrumentation maintenance and project works
- Project and asset management
- Scaffolding and rigging
- Industrial cleaning
- Civil and drainage

Capabilities

- Electrical design and construction
- Manufacture of switchboards, powerboards, control panel fitouts
- Complex scaffold solutions

Discriminators

- Fibreoptic Installation - Telstra approved
- PLC/SCADA and DCS programmers and operators (remote repair of automation systems)
- Exclusive 'laher scaffold system' provider
- One-stop-shop for scaffolding, electrical and mechanical engineering work
- Expertise and experience in operations and maintenance of plants

Key Customers

- AGL
- Gippsland Water
- Energy Australia
- Latrobe City Council
- Engie
- Transfield
- Broadspectrum
- UGL
- Pacific Energy
- Graymont Sibelco

Key Partners

- MMS
- AWM
- LAYHER
- Delta Rent
- Latrobe City Council
- Gippsland Infrastructure

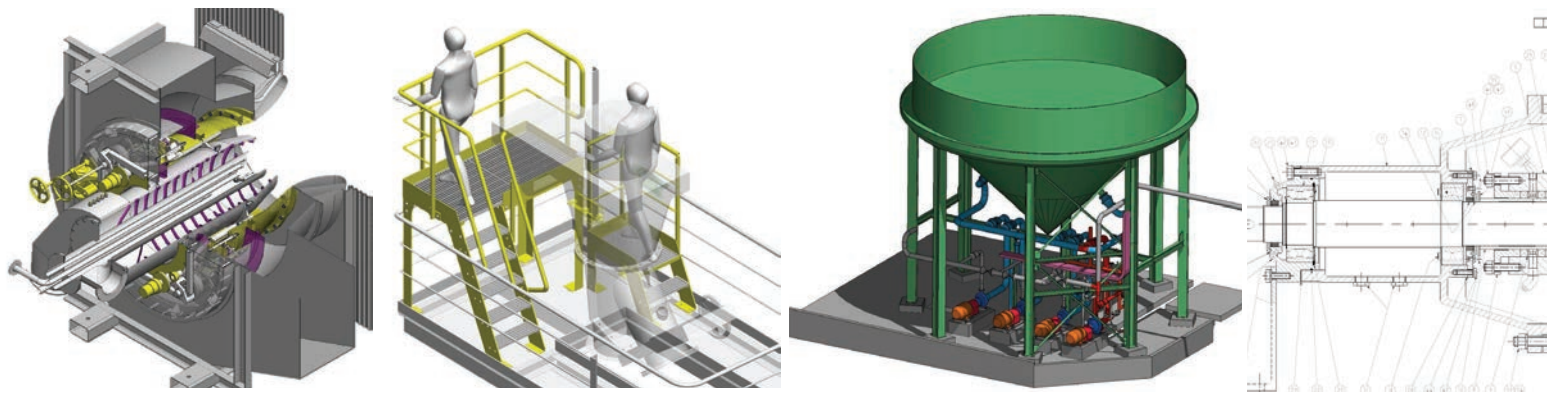
Contact Details

Daniel Lissa
2b Swan Road
Morwell VIC 3840
(03) 5165 0400
dlissa@omAustralia.com.au
www.omAustralia.com.au

Quality Standards and Other Accreditations

- ISO45001:2018 - OHS
- ISO14001:2015 – Environmental
- ISO9001:2015 – QMS
- CM3 – Government Certification for Safety
- Inaugural Winners of the 2016 Engie John Robinson Memorial Health and Safety Award





Pro Draft PTY LTD

Company Overview

Pro Draft is a Latrobe Valley-based company providing engineering drafting services and technical assistance to key industrial and commercial customers for over 25 years.

Capabilities

- Machine components, pressure parts, motor and pump systems and conveyor systems
- 3D laser scanning (in-house capability)
- Electrical and instrumentation design drafting
- Piping design and modelling
- Structural steel modelling and detail
- Major hazard facility - experience and compliance
- Printing and scanning services

Discriminators

- Experience in multiple CAD and modelling platforms
- 3D laser scanning (in-house capability)
- Scalable workforce

Key Customers/Partners

- Australian Paper
- AGL
- Energy Australia
- ExxonMobil
- IXOM
- Omnia
- Belle Banne Conveyor Products
- RTL (Roche Thies Linfox)

Accreditations

- Member - Australian Defence Alliance (AD)
- Member - Austmine
- Member - Housing Industry Association
- VBA - Registered Building Practitioner
- Member - Standards Association of Australia
- Member - VIC Chamber of Commerce and Industry

Contact Details

Geoffrey Chilver
Managing Director
Suite 4, 213 Princes Drive
Morwell VIC 3840
03 5133 8007
reception@prodraft.com.au
www.prodraft.com.au



Safetech Pty Ltd

Company Overview

Designer and manufacturer of dock products, vehicle lifts, freight hoists, scissor lifts, pallet loading and handling equipment, stretch wrappers, and workstation cranes.

- Custom engineered heavy lift tables
- Vertical transportation – heavy capacity lift
- Vertical moving and materials handling specialization

Capabilities

- Custom-designed lifting solutions
- Products locally manufactured under supervision of in-house, specialised design engineers

Discriminators

- Bespoke engineering capabilities
- Design and engineering of largest double scissor lift in Southern Hemisphere
- Control systems integration
- Energy regeneration
- Software development – multilevel security

Key Customers

- RAAF – vertical transportation and dock equipment
- Woomera – big scissor
- Australian Defence Force – materials handling equipment
- John Holland Group
- BHP Billiton
- Boeing – production-line crane systems
- Colonial First State Developers
- Scania

Key Partners

- Owner of Tieman Dock Products Division
- Partners with
 - Southwell (USA)
 - IFM Australia
 - Gorbelt
 - Entrematic
 - Refuel International

Quality Standards and Other Accreditations

- 2019 Manufacturer of the Year Victorian Manufacturing Hall of Fame
- National Winner Telstra Business Awards – 2006
- Holder of six Patents, 10 trademarks and several design registrations

Contact Details

Chris White
 39-45 Della Torre Road
 Moe VIC 3825
 1800 674 566
sales@safetech.com.au
www.safetech.com.au



Stable Engineering

Company Overview

Stable Engineering Services specializes in heavy engineering and pressure systems fabrication commonly found in oil and gas and pressurized water plants.

We have a complete service offering with assembly and erection of the completed structures and also carry out mechanical maintenance; providing a cost effective end-to-end solution for our clients.

Capabilities

- High risk steel fabrication work
- Ticket 10 welding supervisor
- 50 tonne rolling production line capability
- Pressure welding
- General boilermaking
- Submerged arc welding
- Mechanical maintenance
- Mechanical assembly and construction
- Industrial abrasive blasting and painting
- End-to-end project management

Discriminators

- 40 years + company history
- 100 years of cumulative power generation and oil and gas experience
- High risk steel fabrication work
- End-to-end project management
- Ticket 10 welding supervisor
- Feronious and STT welding machines

Key Customers

- SP Ausnet
- Zinfra
- Cross Yarra Partners
- Level Crossing Removal Authority
- Loy Yang Power Station
- Current Melbourne Tunnel Projects
 - Level crossings
 - Under river tunnelling
 - Metro tunnel
- Energy Australia
- Alinta

Key Partners

- Siemens
- Babcock and Wilcock
- CBandI (Chicago Bridge and I)
- McConnell Dowell

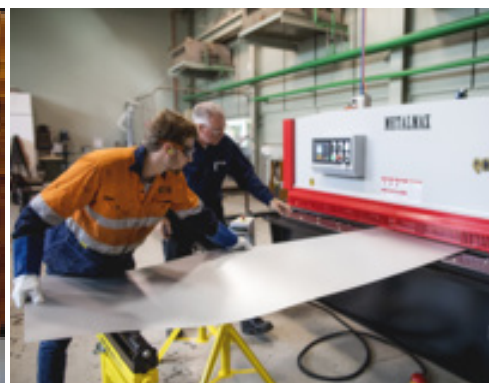
Quality Standards and Other Accreditations

- Rated "Best in Industry" for Workplace Health and Safety by Work Cover Victoria
- Ticket 10 Welding Supervisor
- International welding specialist (iiW)
- ISO 9001

Contact Details

John Buhagiar
 Lot 1 Firmins Lane
 Morwell 3840
 0412 513 445
 (03) 51 33 9955





TAFE Gippsland

Company Overview

A Victorian Government TAFE covering the largest geographical catchment area in Australia. Services over 15,000 student enrolments annually, for training and business improvement solutions in engineering, oil and gas, new energy technology, electrotechnology, manufacturing and work health and safety licensing.

Courses offered in:

- Engineering (mechanical and fabrication)
- Electrotechnology (electrical and instrumentation)

Worksafe and industry recognised licencing:

- Construction and power industry induction cards
- Working in confined spacescaffolding
- Rigging
- Dogging
- Forklift
- Mobile crane
- Elevated platforms

Capabilities

- Training products and services, needs analysis
- Workforce development strategies
- Contextualised training and instructional design

Discriminators

- Full business immersion aligns workforce development with organisational strategy
- Tailored training outcomes for client/sector-specific versions of nationally recognised qualifications
- Access to a range of funding models, including state and federal funding grants and initiatives

Key Customers

- Australian Paper
- AGL
- Ausnet
- ExxonMobil
- Energy Australia
- Esso Australia
- Latrobe Valley Machining Pty Ltd
- NBN Athena
- Anfra Pty Ltd

Key Partners

- Latrobe Valley Authority
- Wellington Shire
- Latrobe Regional Airport
- Latrobe City
- Future Energy Skills
- WorkSafe Victoria
- Energy Safe Victoria
- SAFETECH
- Gippsland Solar
- Victorian Electrical Supply - Industry Advisory Board
- The Skills and Jobs Centre's Community of Practice

- TAFE Community and Industry Engagement Network
- Victorian TAFE Association

Quality Standards and Other Accreditations

- National Provider Number 0417
- Accredited to deliver National High Risk Work Licences

Contact Details

Paulette Ware

Monash Way
Morwell VIC 3840

(03) 5622 8511

p.ware@federationtraining.edu.au
www.federationtraining.edu.au





Trustweld Pty Ltd

Company Overview

Established in 1980, Trustweld is a quality accredited, privately owned company providing fabricated steel products and welding services to the oil and gas, power and mining, paper, heavy industrial and commercial construction industries.

- Large / medium / small fabrications
- Skilled welding operators
- Quality assurance documentation

Capabilities

- Equipped with Guillotine, Punch, Drills, Saw, Press, etc.
- Extensive range of welding processes to include: GTAW, GMAW, FCAW, MMAW and SAW

Discriminators

- Heavy engineering fabrication capability
- Situated on 15,000 m²
- Four overhead cranes with lifting capacity of 20 tonne and 9.5m hook height

Key Customers/Partners

- Wood/ExxonMobil – Retrofit
- Wood PNG LNG/ExxonMobil
- Belle Banne
- GVP Fabricators
- Tek Ocean

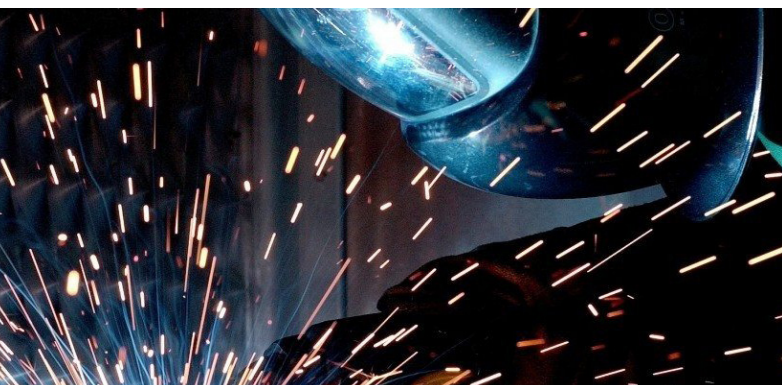
Quality Standards and Other Accreditations

- ISO 9001 2015 – Quality Management Systems
- AS/NZS ISO 3834.2 2008 – Quality Requirements for Fusions Welding of Metallic Materials
- Part 2: Comprehensive Quality Requirements

Contact Details

Nick Vitale
Manager
29 Swan Road
Morwell VIC 3940
0418 141 172
nick@trustweld.com
www.trustweld.com.au





Victorian Testing and Inspection Services

Company Overview

VTs is a privately-owned and operated Latrobe Valley business. We provide inspection services as well as destructive and non-destructive testing.

Capabilities

- Welding facilities
- Metallurgical analysis
- Macro, bend, break testing

Discriminators

- HV, HR, HB hardness
- Tensile test loads from 2 to 1000kN
- Full in-house machining facilities
- Charpy test to 269C

Key Customers

- Bluescope Steel
- QANTAS
- Wood Group
- Surdex Steel
- Downer
- Fulton Hogan
- Gasco

Key Partners

- I-Test
- GqS
- Plater International Consulting

Quality Standards and Other Accreditations

- NATA Accredited laboratory to ISO17025

Contact Details

Andrew Joiner
Director

35 Centre Road
Morwell VIC 3840

03 5133 8220

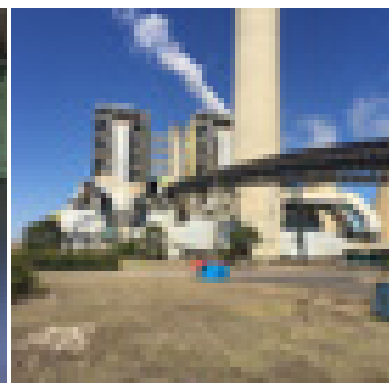
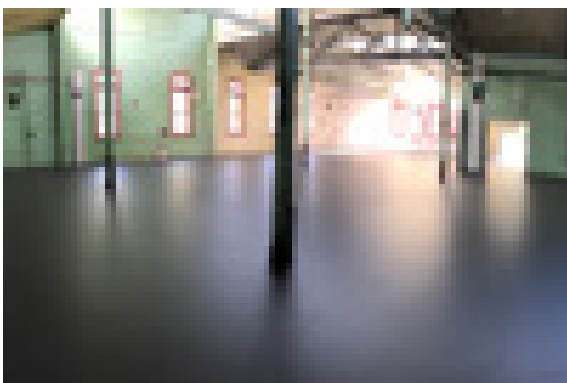
33 Catellina Drive
Tullamarine VIC

03 9335 3327

0425 136 842

info@victesting.com.au
www.victesting.com.au





Vincent Painting Contractors

Company Overview

Vincent Painting Contractors provides surface preparation and protective coatings that add value to customer assets. Recognised as a leader in industrial coatings application, Vincent Painting Contractors provide solutions through consultation and experience.

- Commercial and industrial painting
- Industrial coatings
- Abrasive blasting
- Painting
- Reports and analysis

Capabilities

- High temperature and niche ceramic coatings
- Marine maintenance
- Specialised coatings on sensitive equipment
- End-to-end job delivery

Discriminators

- Sponge blasting – 95% dust-free blasting solution
- Specialised linemarking (eg. runways)
- Oil and gas maritime security clearance (MSIC maritime)

Key Customers

- RAAF Base Sale – infrastructure upgrades
- Loctite Henkel
- Lockheed Martin - flight simulator coatings Halliburton
- CPB John Holland Thiess
- Alinta
- Siemens
- Lendlease
- Gippsland Water
- UGL
- Axioms Edge
- Hazelwood Power from 1995
- Hofmann Engineering

Key Partners

- Access Industrial
- BMC
- Lendlease
- Esterline Technologies Corporation
- Dulux International
- PPG
- Axiom's Edge
- OEG Partners
- TEK – Ocean
- Rezitech Belzona

Quality Standards and Other Accreditations

- ISO 9001:2015
- ISO 14001:2015
- AS/NZS 4801:2001
- NACE – National Association of Coating Engineers Qualified Painting Inspectors NACE CODES: 4334

Contact Details

Wayne Vincent

(03) 5133 0640

0429 009 617

wayne@vincentpainting.com.au

www.vincentpainting.com.au



**Vincent Painting
Contractors**



JAMES CRANE 
Safety Lifting Productivity

CRANE NO 1
SERIAL NO 5276
CLASS C4M4



The Latrobe Valley Defence Alliance Capability Profile was developed by Latrobe City Council with support from the Australian Defence Alliance (Vic).

**For more information contact
Latrobe City Council:**

Council's Business Development Unit
Phone: 1300 367 700

Email: busdev@latrobe.vic.gov.au

PROUDLY PRINTED IN
LatrobeCity



**AUSTRALIAN
DEFENCE
ALLIANCE**



LatrobeCity
a new energy