

16.01-1L28/05/2021
C122latr**Housing Supply****Policy Application**

This policy applies to all land identified in the Housing Framework Plans in this clause.

General Strategies

Encourage and concentrate a diverse range of housing in locations with access to community services, activity centres and public transport in accordance with the Housing Framework Plans in this Clause.

Support lot consolidation to maximise opportunities for increased residential yield and integrated development in locations identified for Substantial and Incremental Change in the Housing Framework Plans in this Clause.

Encourage the development of smaller housing types, particularly one and two bedroom dwellings in Substantial Change Areas and Incremental Changes Areas as indicated on the Housing Framework Plans for each town in this Clause.

Support development that is flexible for different age groups and abilities without the need for major adaptation post construction.

General policy guidelines

Consider as relevant:

- Encouraging medium and high density housing typologies within 400 metres of the Primary Activity Centres of Moe, Morwell, Churchill and Traralgon.
- Supporting infill development within 200 metres of existing or planned Neighbourhood Activity Centres and Local Activity Centres and the retail centres of District and Small Towns.

Substantial change area strategies

Encourage multi-level residential development in the form of low scale apartments, townhouses, shop tops and units.

Discourage housing intensification in areas identified for 'Future Substantial Change' south of Shakespeare Street, Traralgon, until existing industrial development located to the south (Area 6 of the Traralgon Township Structure Plan in Clause 11.01-1L) transitions to light industrial or other non - sensitive uses.

Incremental change areas strategies

Encourage higher density housing in the form of townhouses, units and dual occupancies that are sensitive with adjoining streetscapes, buildings and residential areas.

Discourage housing intensification south of Commercial Road, Morwell until rehabilitation works to the northern extent of the Hazelwood open cut brown coal mine area are complete (Area 3 on the Morwell Town Structure Plan in Clause 11.01-1L).

Facilitate the development of streetscape character that contains:

- Private gardens in front yards.
- Space between buildings.
- Views to local landmarks.
- Natural shade.

Limited change areas strategy

Support the development of detached dwellings and dual occupancies that reinforce the spacious regional suburban character.

Limited change areas policy guidelines

Consider as relevant:

- Encouraging smaller and diverse housing types, including units and townhouses, within 200 metres of existing or planned Neighbourhood and Local Activity Centres and where public transport is accessible.
- Discouraging units of townhouses beyond 200 metres from an existing or planned Neighbourhood Activity Centre and Local Activity Centre, except on Strategic Development Sites identified on the Housing Framework Plans.
- Discouraging higher densities unless a lot is greater than 1500 square metres and is:
 - Within 400 metres walking distance from a public transport network.
 - Consistent with the average lot size of density development of residentially zoned land that is within a 150 metre radius (excluding the subject site in the calculation).
 - Not constrained by an overlay that affects the development potential of the lot (heritage, bushfire or flooding overlay).

Minimal change areas strategies

Support minimal change in the form of detached houses and dual occupancies in locations with distinct character attributes, such as heritage, neighbourhood character, environmental or amenity values or infrastructure limitations.

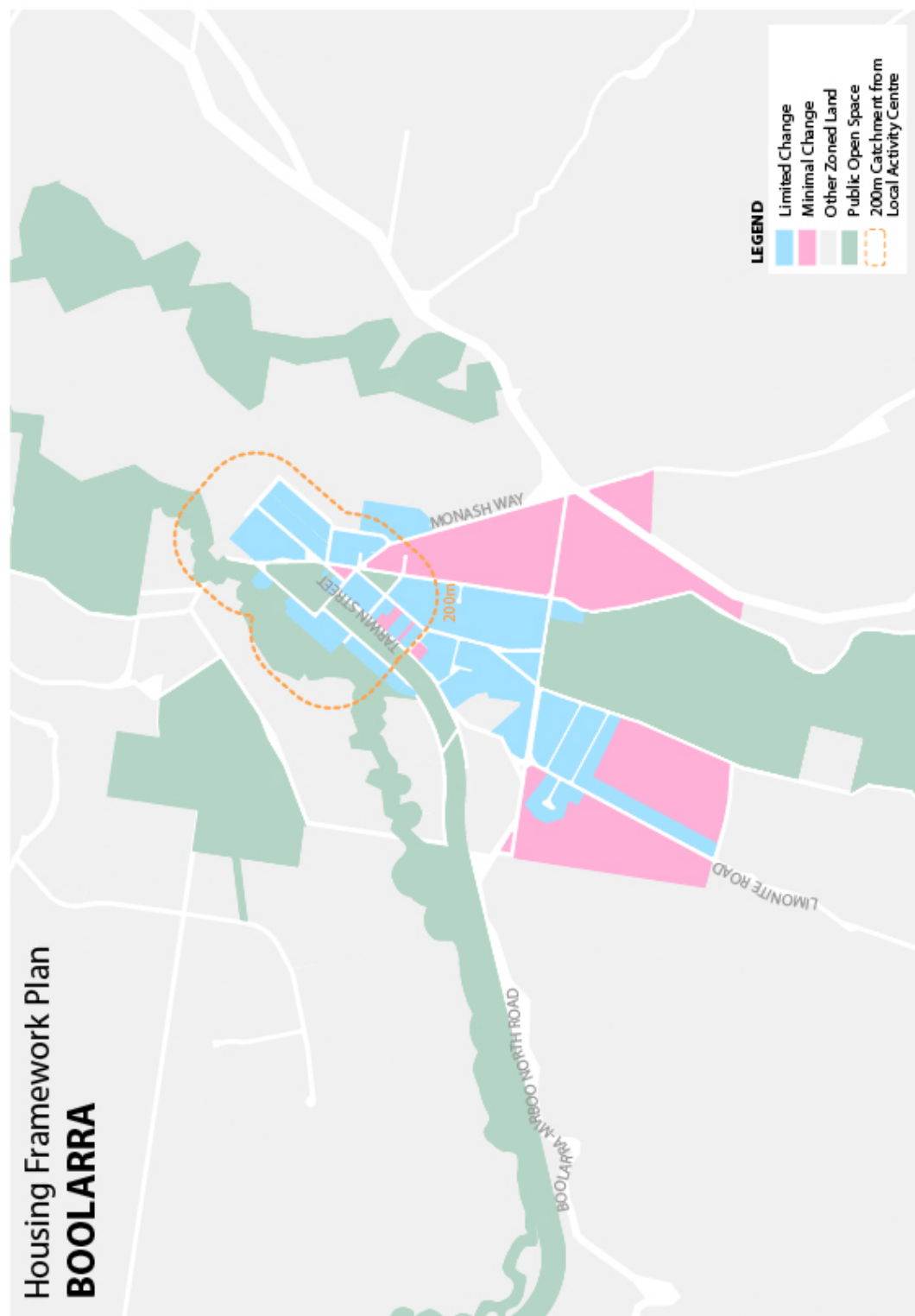
Encourage the retention and provision of vegetated areas including canopy trees and large garden spaces.

Policy document

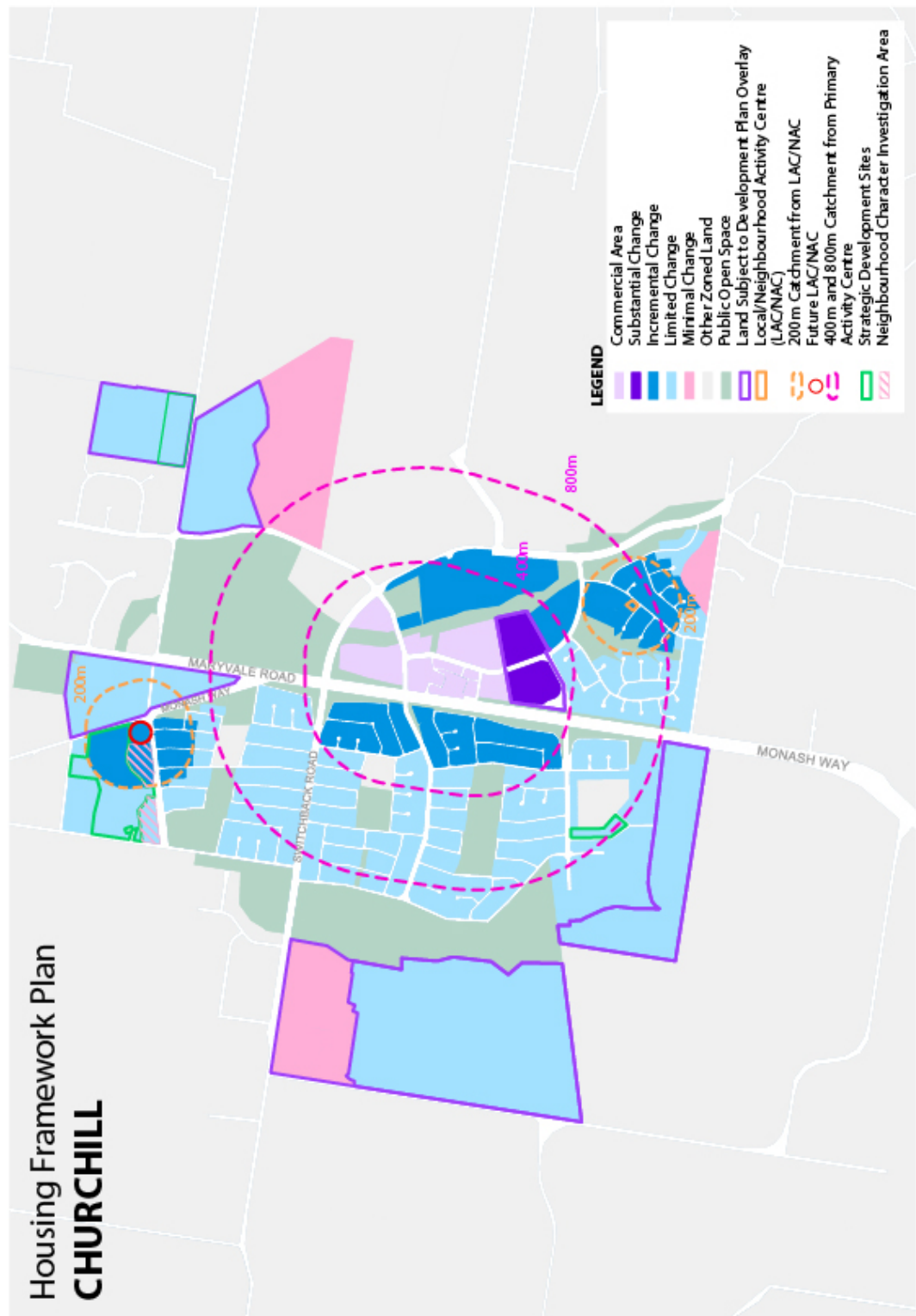
Consider as relevant:

- *Live Work Latrobe Housing Strategy* (Latrobe City Council, MacroPlan Dimasi, RMCG and Planisphere, 2019)

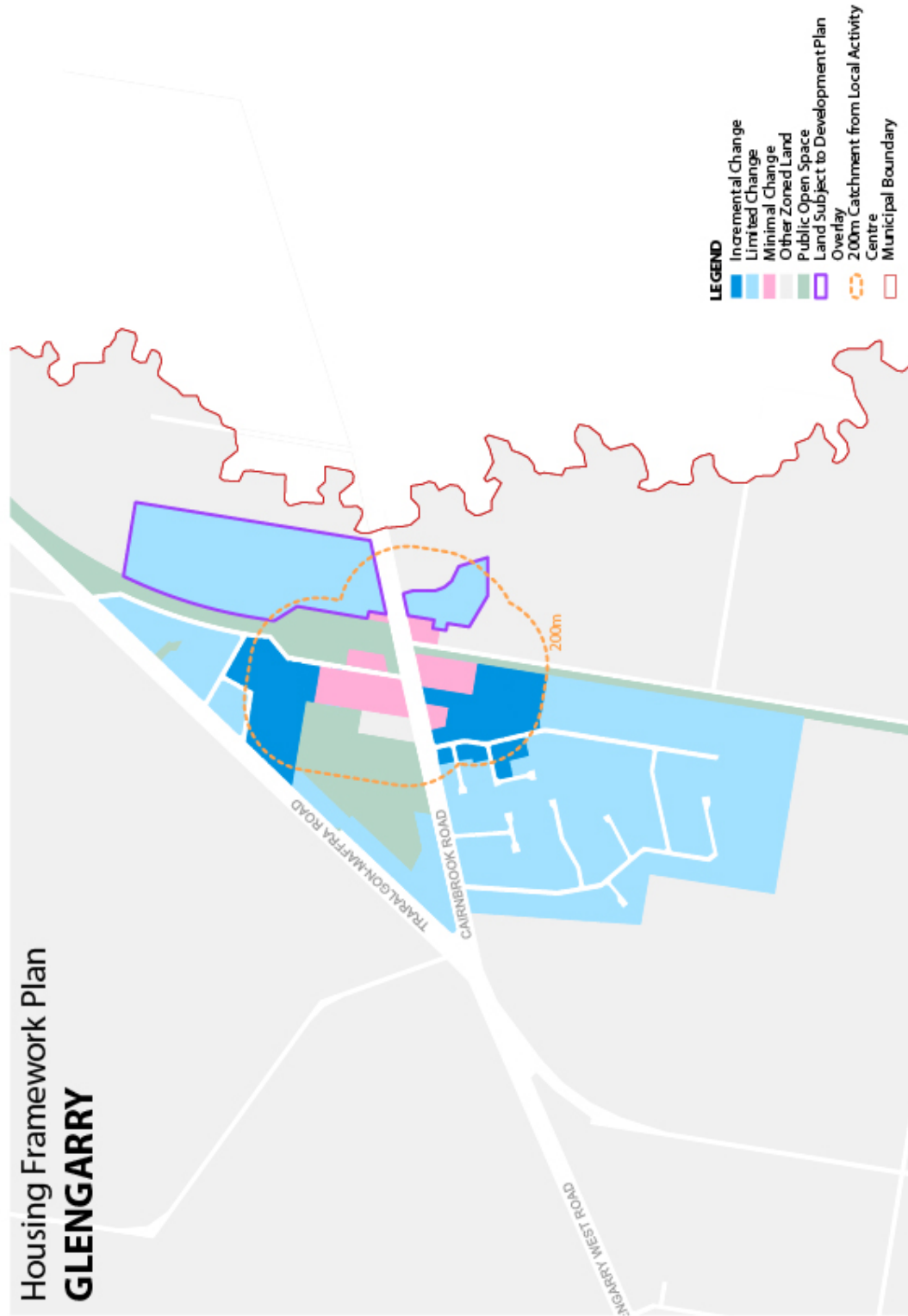
Boolarra Housing Framework Plan



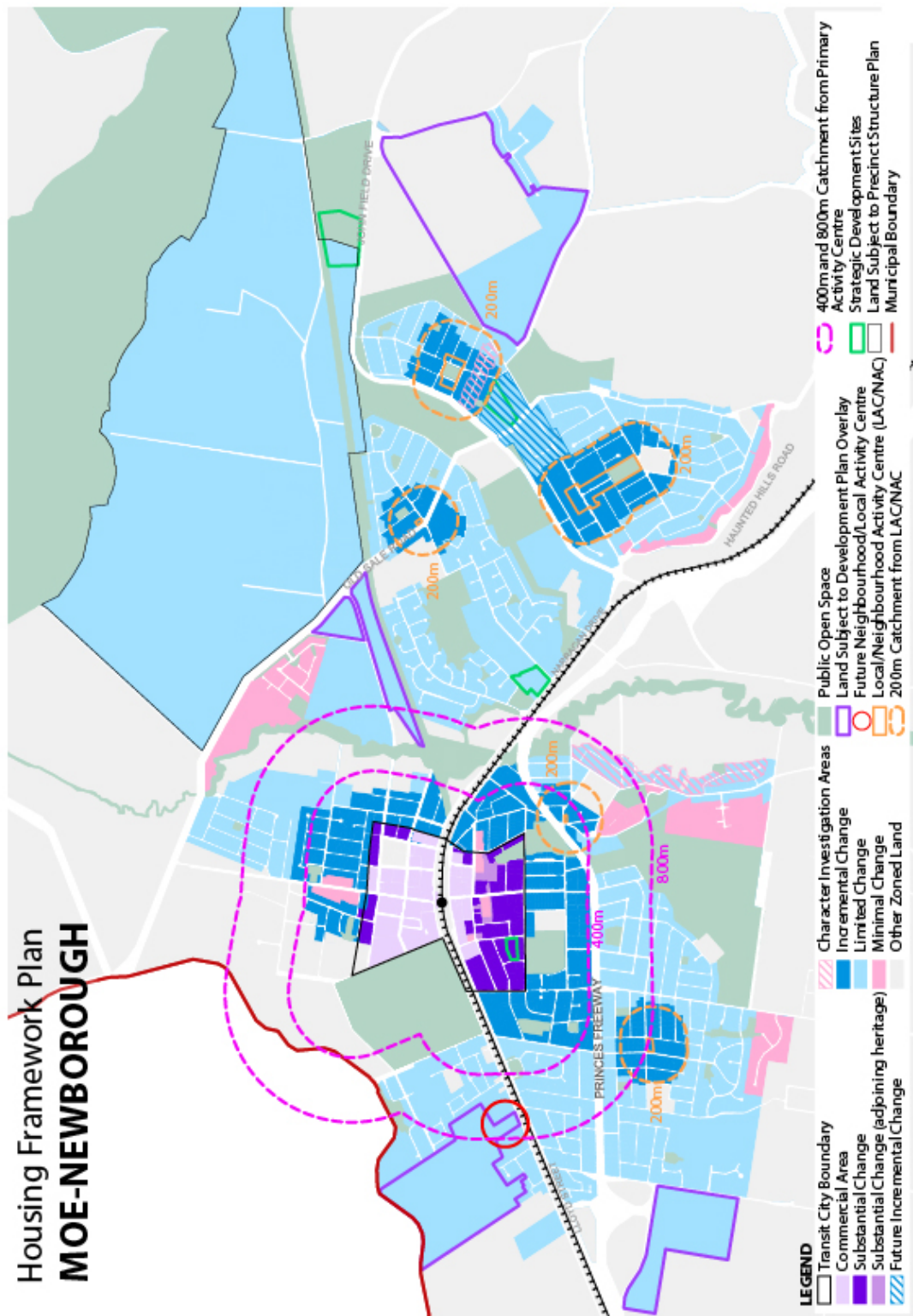
Churchill Housing Framework Plan



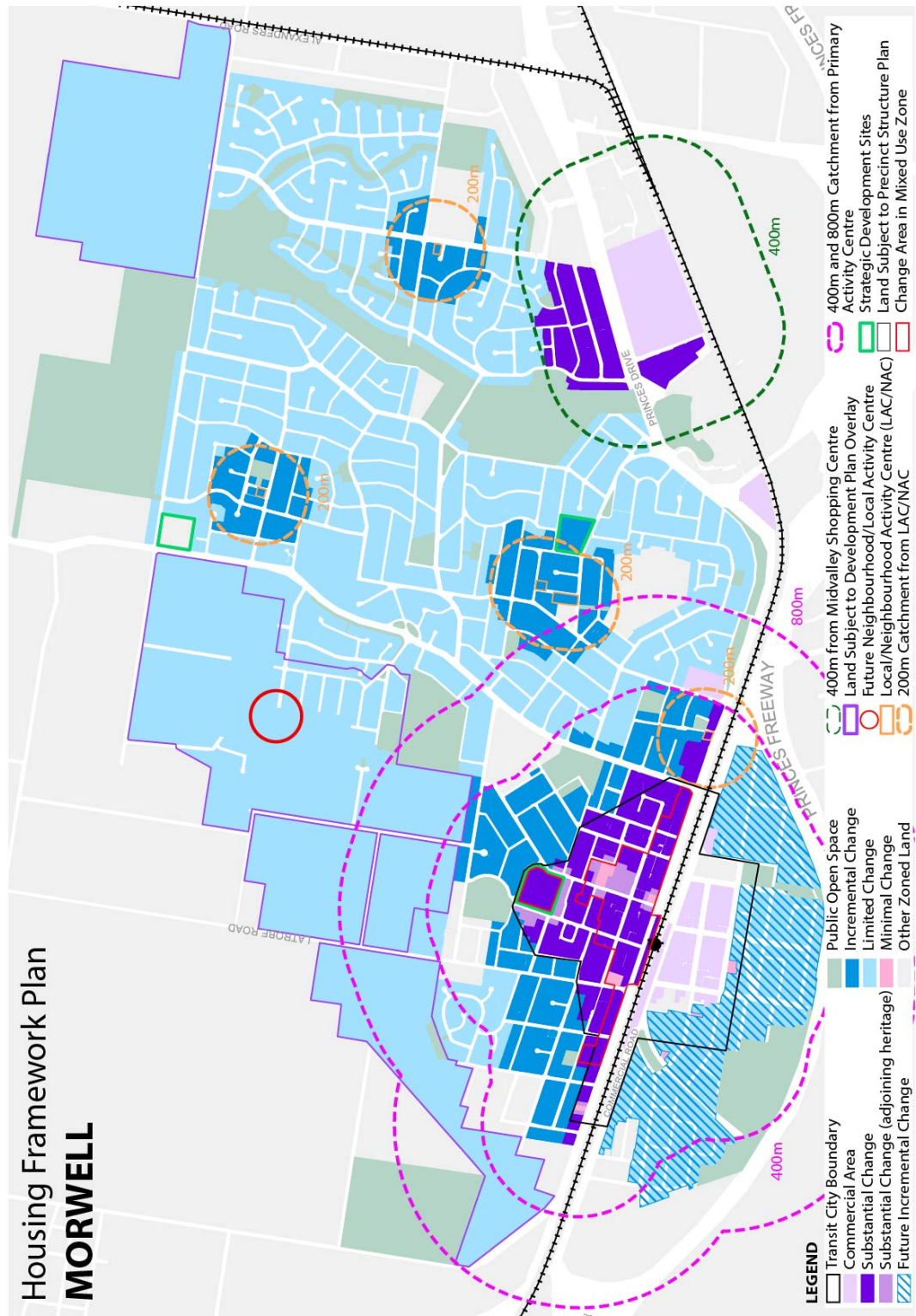
Glengarry Housing Framework Plan



Moe - Newborough Housing Framework Plan



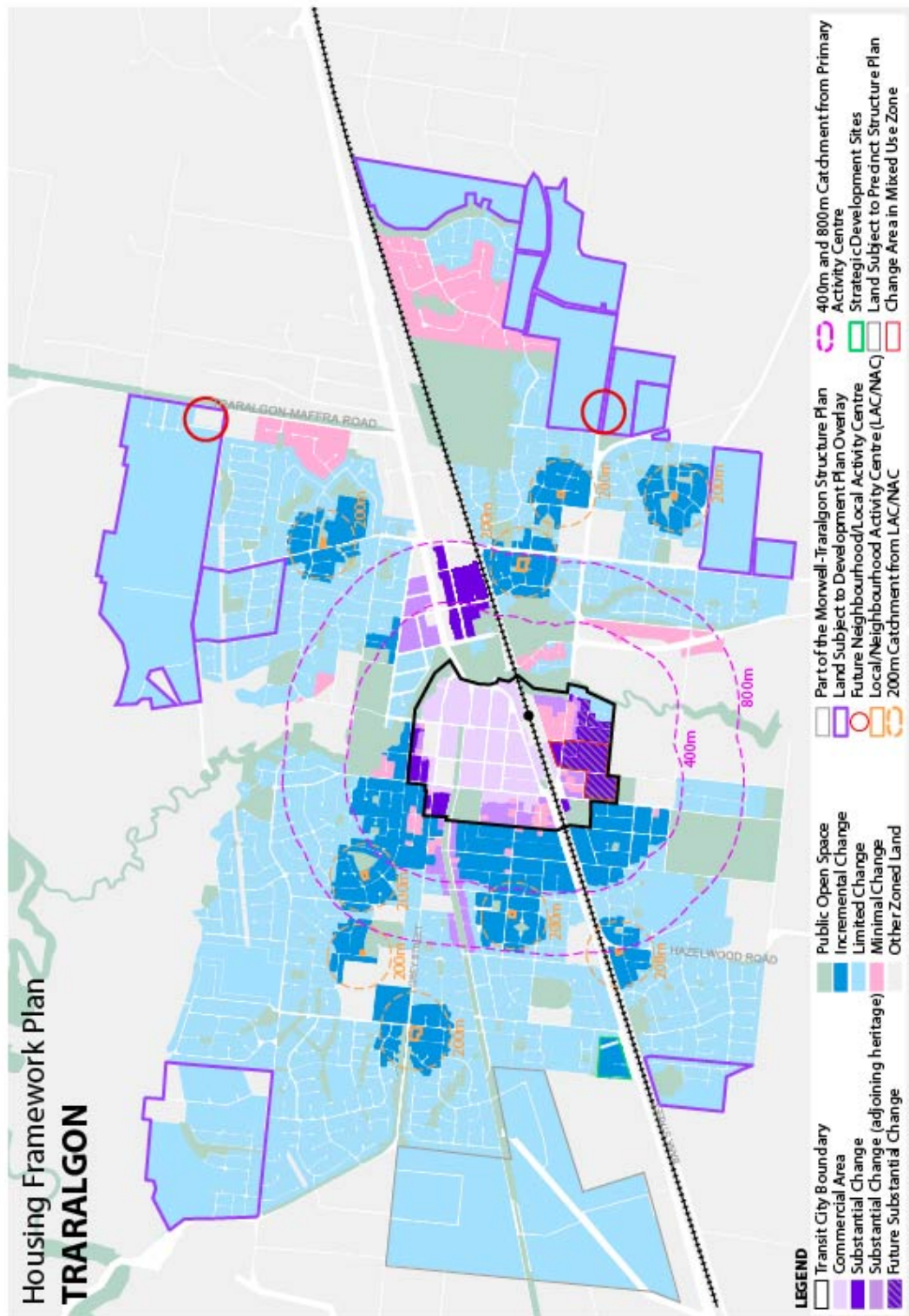
Morwell Housing Framework Plan



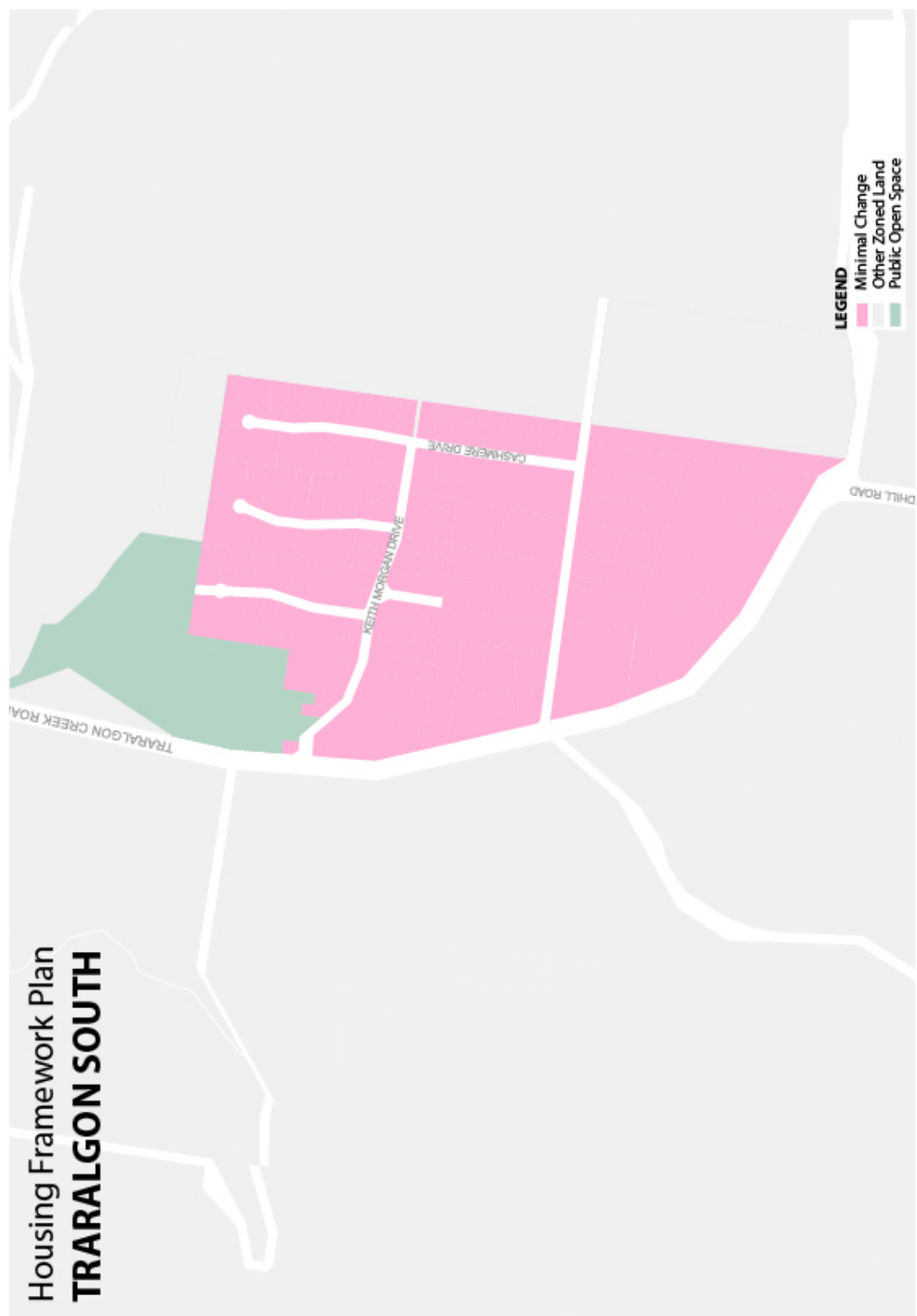
Toongabbie Housing Framework Plan



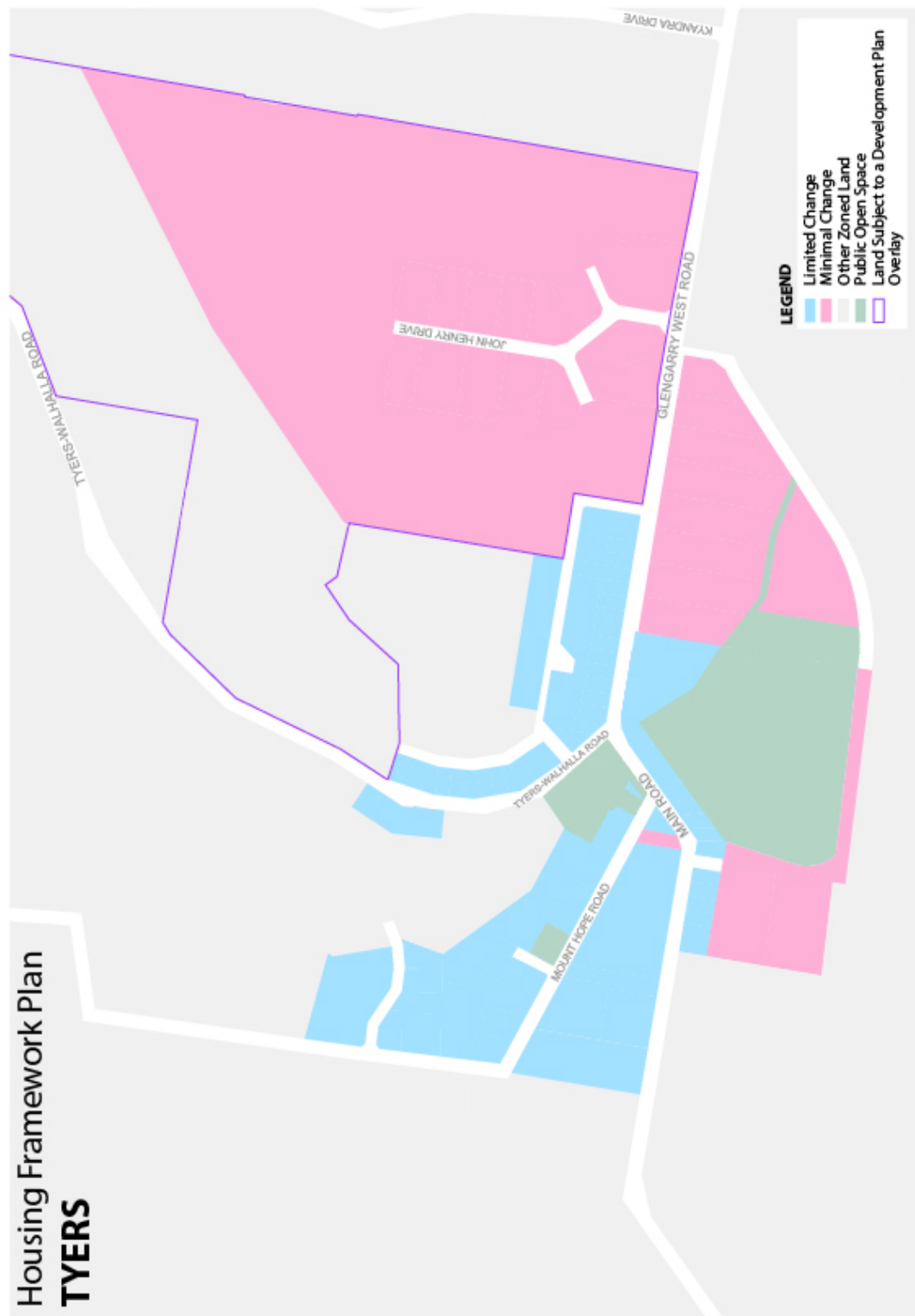
Traralgon Housing Framework Plan



Traralgon South Housing Framework Plan

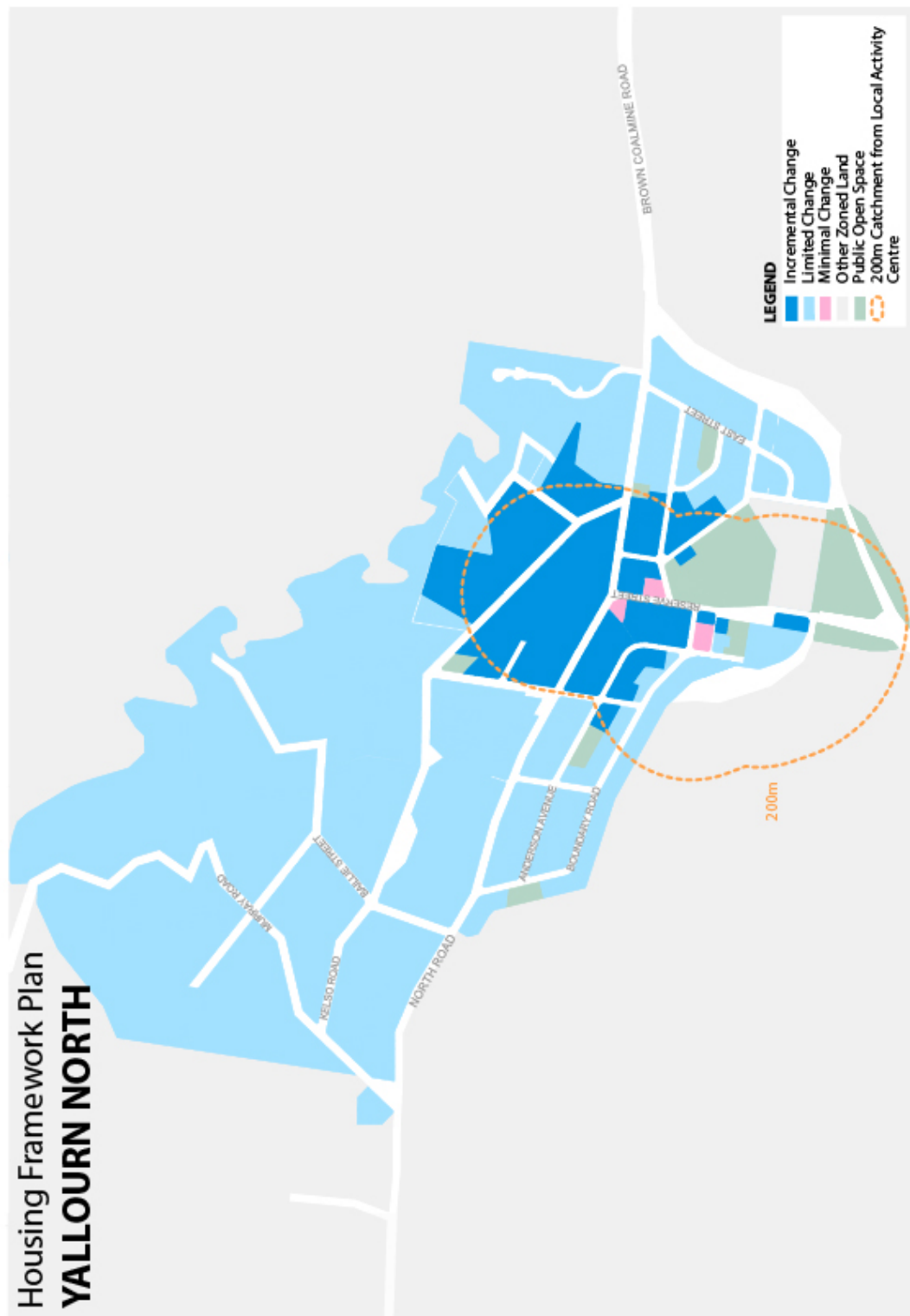


Tyers Housing Framework Plan



Housing Framework Plan
TYERS

Yallourn North Housing Framework Plan



Yinnar Housing Framework Plan

