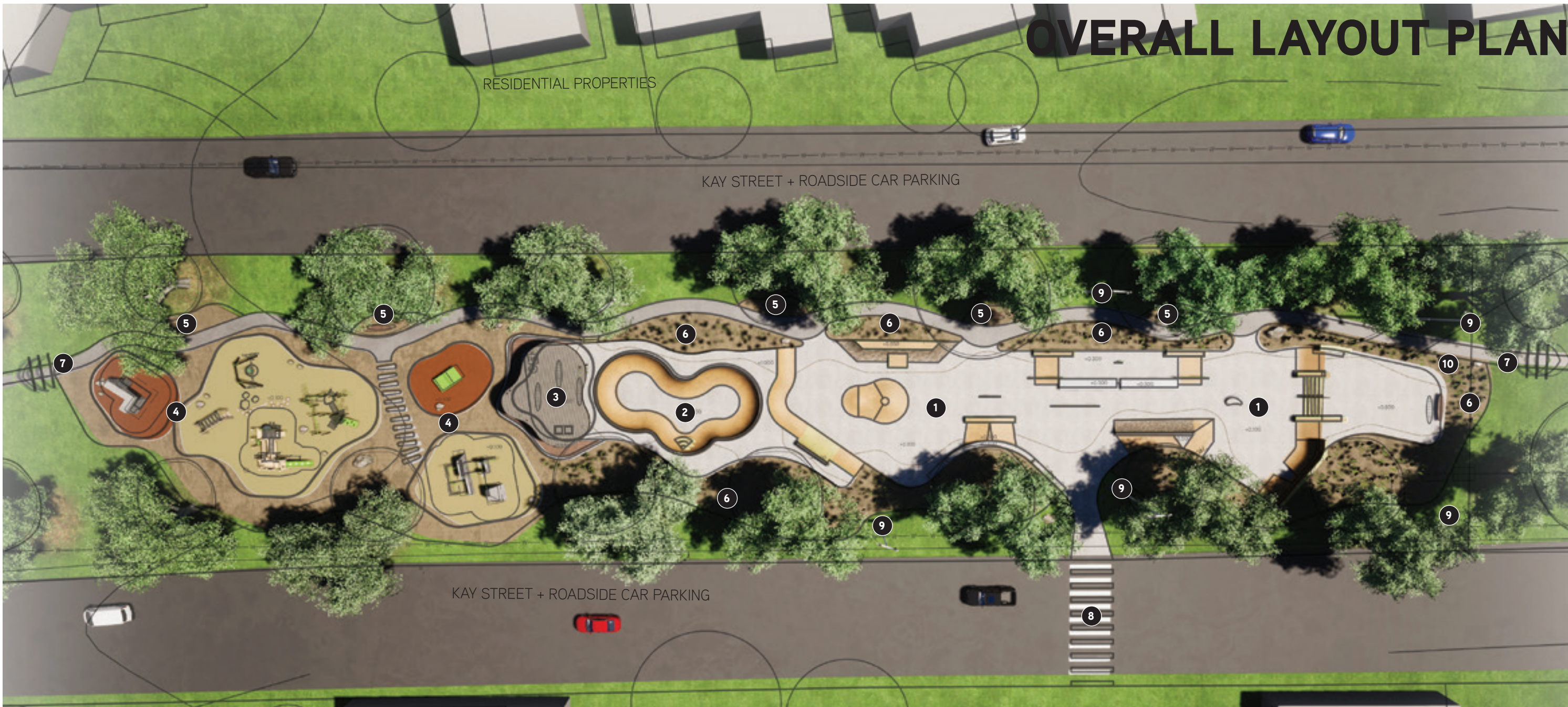


# OVERALL LAYOUT PLAN



## LEGEND

### KAY STREET

**FACILITY DESCRIPTION:** Flowing linear street plaza with contemporary urban materials, planter boxes and large flat open skate spaces. Tight pool style advanced bowl with steps, pool coping and central social space.

**TRANSITION:** 30%

**STREET:** 70%

**1 LOWER PLAZA LEVEL:** 50m long street/ plaza run with granite garden bed ledges, brick banks, rails, boxes, manual pads and flowing paving strips.

**2 CENTRAL POOL BOWL AREA:** Large pool style bowl with 5ft deep with hips, steps and granite pool coping. Narrow circulating platforms areas supported by the large central shelter area and social space.

**3 CENTRAL SOCIAL SPACE:** Large custom shelter area with seating, deck space, BBQ, drinks fountains and bins providing prominent view over the skate, play and outdoor recreation areas.

**4 PLAY AND SUPPORTING RECREATION SPACES:** Individual play and parkour area with additional climbing and ping pong zones, providing amenity to all ages and different demographics.

**5 SATELLITE SEATING PODS:** Several seating spaces utilise the natural shade of the existing trees to promote views onto key features along the main connector pathway.

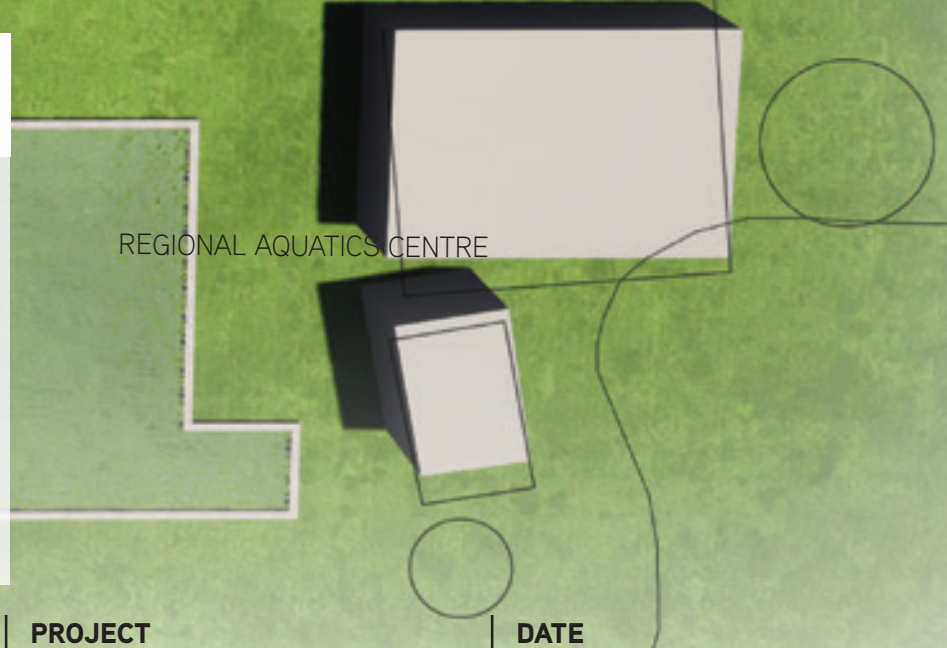
**6 PLANTING AREAS:** Organic areas of vegetation surround the skate areas providing buffer zones and softening the interface of the precinct with the existing surroundings.

**7 Main connector path with framing archways**

**8 Suggested pedestrian crossing to Aquatics centre**

**9 Lighting**

**10 Feature signage**



### CLIENT



0 2 4 10 20  
Scale Approx. 1:400 @ A3



# CONVIC

Unit 13, 46-50 Regent Street  
Richmond VIC 3121  
T (03) 9486 9899  
convic.com

### PROJECT

Traralgon Youth Activity Precinct

### TITLE

Agnes Brereton Draft Concept Design  
Layout Plan

### DATE

21.01.2020

### REVISION

01



# PLAN VIEW



## DESIGN

### CONSIDERATIONS

**PROS:**

- Hugely activated location within iconic park allows for a unique highly activated design and aesthetic in a tight space between tree lines.
- Connection to key youth and recreational facilities such as aquatics centre
- Central access for local youth and visitors alike
- Good and regular passive surveillance
- Multiple areas of existing shade

**CONS:**

- Restricted site expanse, limited by the possible TPZs and adjacent roadways
- Likely impact on existing services
- Narrow site provides limited options to provide space for crowds around bowl at busy times and during events
- Close proximity to nearby residents
- Height and depth of features limited by potential site conditions
- Overall design layout and inclusions dictated by site and may not always be the communities most preferred options



# OVERVIEW WEST > EAST





# STREET PLAZA AREA





# OVERVIEW EAST > WEST

