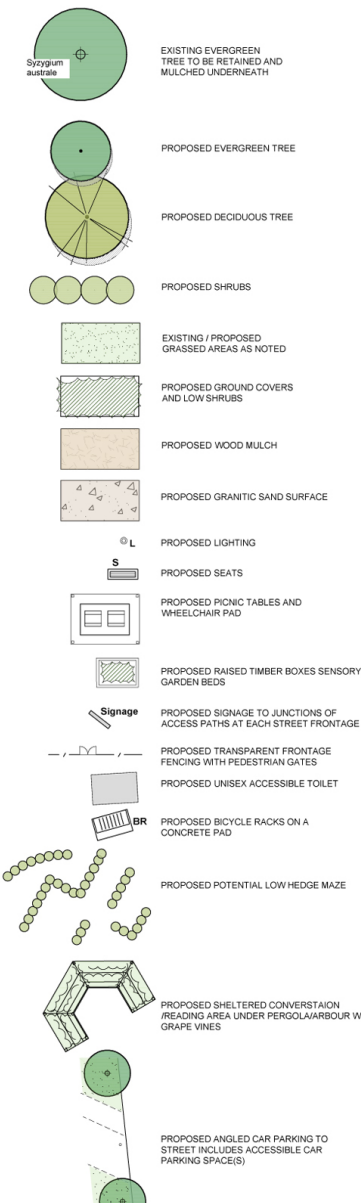




LEGEND



LIST OF ITEMS

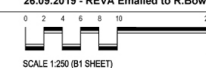
- 1 Angled car parking to Hinkler Street, one (1) accessible parking space and two (2) standard parking spaces.
- 2 Transparent fencing to both street frontages with pedestrian gates.
- 3 Signage to junctions of access paths at the intersections of the two streets. Main entrance sign with map at Kingsford Street, secondary entrance sign with map at Hinkler Street.
- 4 Orchard areas of mainly Apples, Pears, Citrus, Hazelnuts and Olives.
- 5 Sealed pathways to comply to L.C.C. Standards.
- 6 Bicycle racks-central location on a concrete pad.

- 7 Mulched area around the Mahogany Gum and Lilly Pilly.
- 8 Seats with back and arm rests.
- 9 Public art central feature.
- 10 Lighting to the main path system.
- 11 Sheltered conversation/reading area under pergola/arbours with grape vines. Offers passive surveillance to the open grassed area.
- 12 Granitic sand path between the orchard and the open grassed area.
- 13 Row of shrubs along the fencelines to the neighbouring properties.
- 14 Unisex Accessible toilet near Kingsford Street.

- 15 Main angled car parking to Kingsford Street south of the existing entry, two(2) accessible parking spaces and three(3) standard parking spaces.
- 16 Potential low hedge maze - Sensory garden.
- 17 Raised sensory garden beds - Sensory garden.
- 18 Picnic table and concrete wheelchair pad, one or two tables to have a chess board on their tabletop. Two picnic tables with covered shelters.

PROPOSED SEALED PATHWAY TO L.C.C. STANDARDS

PROPOSED GRANITIC SAND PATH BETWEEN THE ORCHARD AND THE OPEN GRASSED AREA



Amendments:
REVA - Coloured drawing and wording, 26.09.2019

Print Issue:
24.09.2019 - Emailed to R.Bowen
26.09.2019 - REVA Emailed to R.Bowen



185 McIntosh Road, Strzelecki 3950
Mob: 0436 053 935
Email: sportwise@activ8.net.au

Title: L1 - LANDSCAPE CONCEPT PLAN,
KINGSFORD STREET RESERVE, MOE

Client: LATROBE CITY COUNCIL

This drawing is the copyright of, and may not be reproduced or transmitted without prior consent of Michael Smith and Associates Landscape Architecture and Urban Design

MICHAEL SMITH AND ASSOCIATES
Landscape Architecture and Urban Design

Office: 1st floor, 407 Whitehorse Road, Balwyn VIC 3103
Postal: 5 Jervis Street, Camberwell VIC 3124
Tel: 9830 9414
Fax: 9830 2555
Email: mike@msalundurb.com.au

Drawn:
Date: 20/09/2019
Project No.: 19-029
Cad File:
Drawing No.: Sheet 1 of 1



L1-LANDSCAPE CONCEPT PLAN - KINGSFORD STREET RESERVE, MOE

LATROBE CITY COUNCIL