

TRENCHED SERVICE PARALLEL TO COUNCIL ASSET



GENERAL NOTES / CROSS REFERENCES

1. All dimensions in mm unless noted otherwise.
2. Chamfers are 15 x 15 unless shown otherwise.
3. Concrete strength shall be as specified.

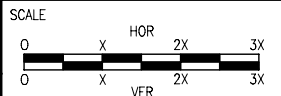
File name:

Latrobe City

TRENCHED SERVICE INSTALLATION including stormwater pipes

CITY AUTHORISATION

VERSION/
DATE OF PLOT 27/11/2003



DWG No. **LCC 901**
SHEET NO. 1 OF 1