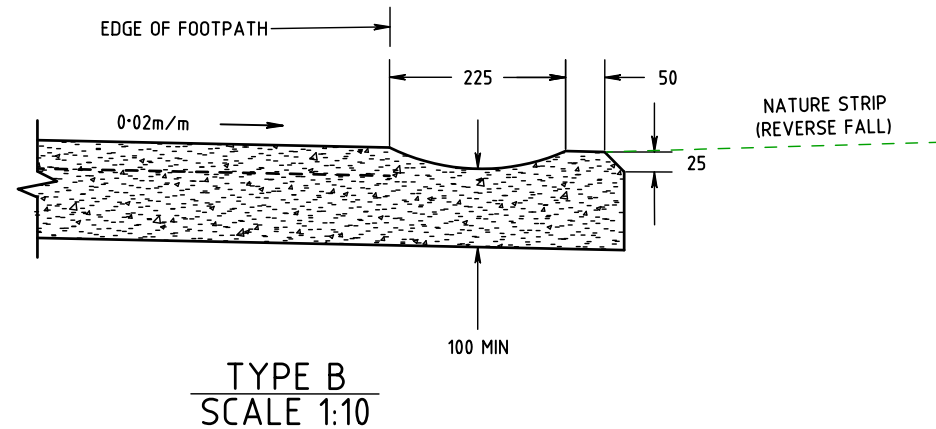
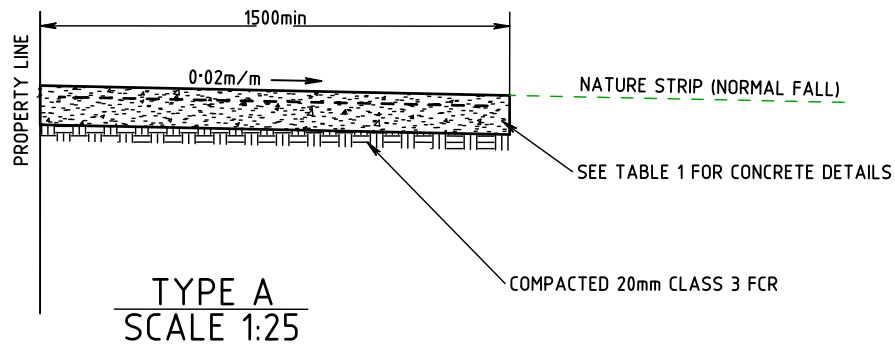


FOOTPATH DRAINS

DRAINS SHALL BE GRADED TO AN APPROVED DISCHARGE POINT



PATH MIN DEPTH	REINFORCEMENT	REINFORCEMENT TOP COVER	MIN FCR BASE	CONTRACTION JOINT DEPTH
75mm	NA	NA	35mm	20mm
100mm	SL62	30mm	50mm	25mm
125mm	SL72	35mm	60mm	35mm
150mm	SL82	40mm	75mm	40mm

TABLE 1

NOTES

- : ALL CONCRETE PATHS GREATER THAN 100mm THICK ARE TO BE VIBRATED WITH A VIBRATING SCREED
- ALL OTHER PATHS ARE TO BE TAMPED
- : ALL JOINTS IN ACCORDANCE WITH LCC 412



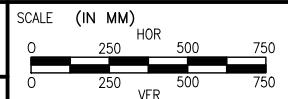
GENERAL NOTES / CROSS REFERENCES

1. All dimensions in mm unless noted otherwise.
2. Chamfers are 15 x 15 unless shown otherwise.
3. Concrete strength shall be as specified.

File name: LCC 401 pedestrian path.pro

Latrobe City

PEDESTRIAN PATHS



DWG No. **LCC 401**

SHEET NO. **1** OF **1**

CITY AUTHORISATION

VERSION/
DATE OF PLOT 1/4/2015