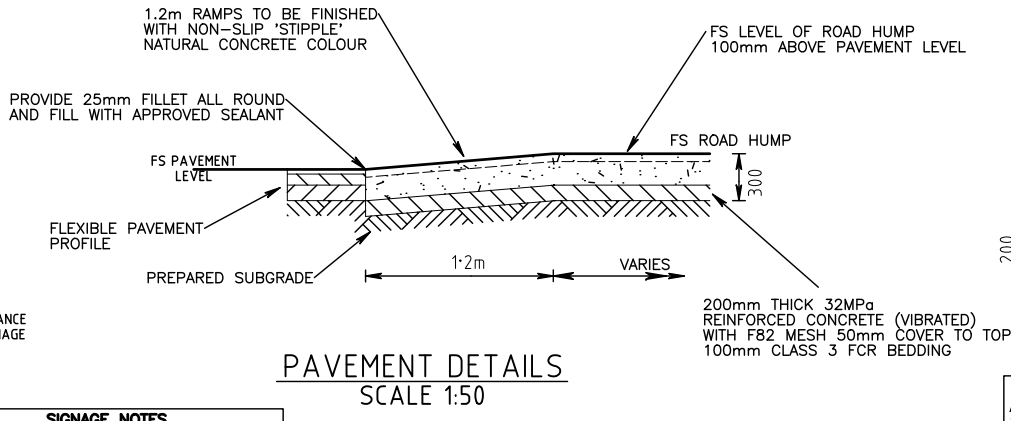
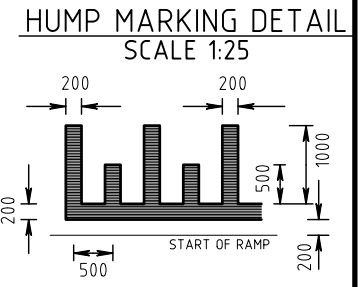


MID-BLOCK TREATMENT SCALE 1:500



PAVEMENT DETAILS SCALE 1:50



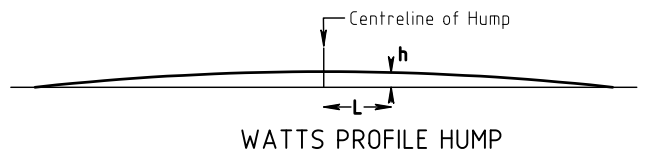
LINEMARKING NOTES
ALL LINEMARKING TO BE 2 COAT
200 MICRON WITH ONE APPLICATION OF
STANDARD 'DROP ON' GLASS BEADS

SIGNAGE NOTES
SIGNAGE SHOULD BE LOCATED AS FOLLOWS:
- MINIMUM OF 600mm FROM LINE OF KERB TO OUTER EDGE OF SIGN GROUP
- MINIMUM MOUNTING HEIGHT IS TO BE 2.20 m FROM THE LOWER EDGE OF SIGN GROUP
- ALL SIGNS TO BE ROTATED APPROX 5 DEG FROM THE APPROACHING TRAFFIC LANE

PAVEMENT NOTES
CARE SHOULD BE TAKEN DURING CONSTRUCTION TO ENSURE RESIDUE FROM ASPHALT SURFACING DOES NOT CONTAMINATE CONCRETE SURFACE



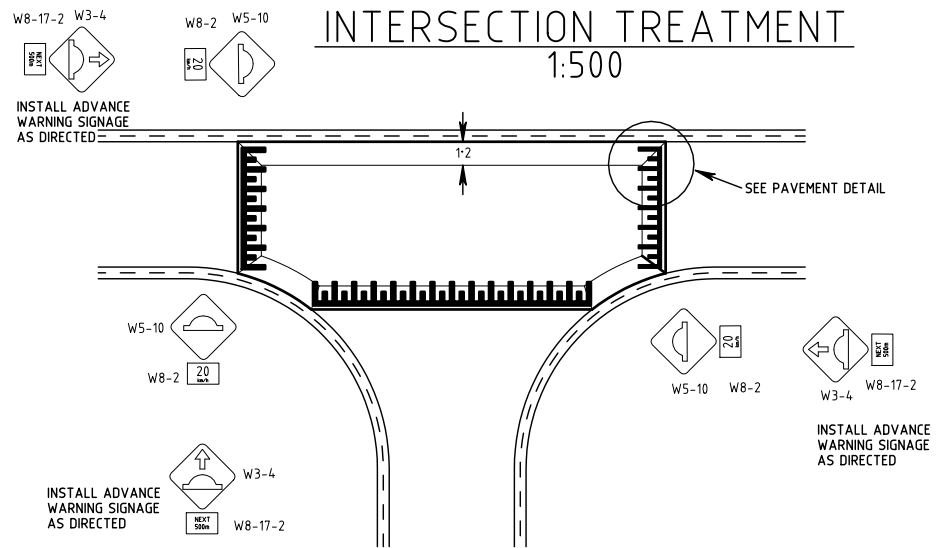
FLAT-TOP HUMPS SCALE 1:50



WATTS PROFILE HUMPS

L (m)	0	0.1	0.2	0.3	0.4	0.5	0.6	0.7	0.8	0.9	1.0	1.1	1.2	1.3	1.4	1.5	1.6	1.7	1.8	2.0
h (mm)	100	100	99	97	95	93	90	86	81	76	71	65	58	51	43	34	25	16	5	0

NOTE: PROPRIETARY PRODUCTS WILL BE CONSIDERED FOR USE WHERE APPROPRIATE



INTERSECTION TREATMENT SCALE 1:500

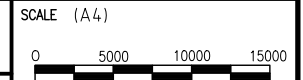


GENERAL NOTES / CROSS REFERENCES

- All dimensions in mm unless noted otherwise.
- Chamfers are 15 x 15 unless shown otherwise.
- Concrete strength shall be 32 MPa unless specified otherwise.

Latrobe City

ROAD HUMPS



DWG No. **LCC 309**
SHEET NO. **1** OF **1**

CITY AUTHORISATION

VERSION / DATE OF PLOT 1/4/2015