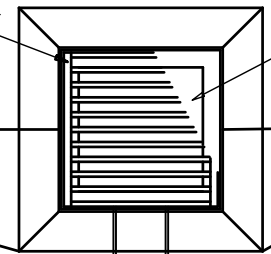


FOOTPATH AND DRAIN WIDTH
REFER LCC401-PEDESTRIAN PATHS

LINE OF INVERT OF FOOTPATH DRAIN

150
300
150

GRATE UNIT



FRAME UNIT

FOOTPATH WIDTH
REFER LCC401-PEDESTRIAN PATHS

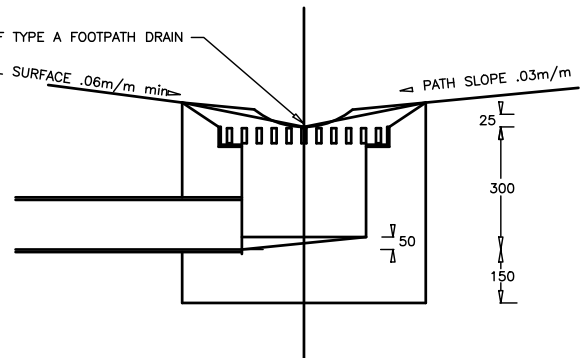
TAPER EDGE OF CONCRETE
AT 1 in 10 max dev

150Ø PVC

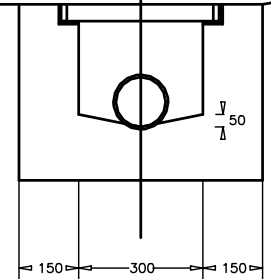
INVERT OF TYPE A FOOTPATH DRAIN

NATURAL SURFACE .06m/m min

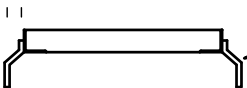
PATH SLOPE .03m/m



INVERT OF TYPE A FOOTPATH DRAIN

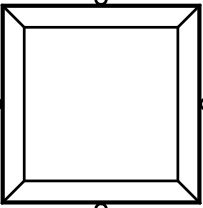


150



10Ø PLAIN ROUND BAR

400 ID



387 OD

40x12 MS
13mm SPACES
BUTT WELDED

387 OD

45x45x3 MS
BUTT WELDED

FRAME UNIT

GRATE UNIT



GENERAL NOTES / CROSS REFERENCES

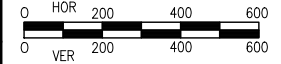
1. All dimensions in mm unless noted otherwise.
2. Chamfers are 15 x 15 unless shown otherwise.
3. Concrete strength shall be as specified.

File name:

Latrobe City

GRATED PIT FOR FOOTPATH DRAIN

SCALE



DWG No.

LCC 207

SHEET NO. 1 OF 1

CITY AUTHORISATION

VERSION/
DATE OF PLOT 1/4/2015